

# Pinnacle Series

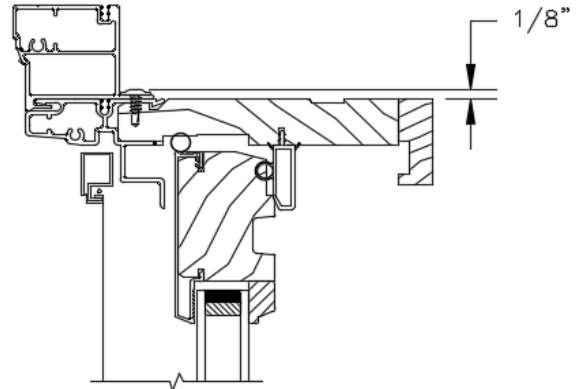
## CLAD DOUBLE HUNG

### MEASUREMENT CONVERSIONS

STANDARD (NO CASING)												
Size Referenced	Daylite Opening		Glass Size		Frame Size		Rough Opening		Unit Size		Masonry Opening	
Daylite Opening	Dimension Needed											
			Width	+1	Width	+6 3/8	Width	+7 1/8	Width	+6 3/8	Width	+7 1/8
Glass Size	Width	-1			Width	+5 3/8	Width	+6 1/8	Width	+5 3/8	Width	+6 1/8
	Height	-1			Height	x2 + 10 3/4	Height	x2 + 10 1/4	Height	x2 + 9 3/4	Height	x2 + 10 1/4
Frame Size	Dimension Given											
	Width	-6 3/8	Width	-5 3/8			Width	+3/4	Width	+0	Width	+3/4
Rough Opening	Height	(-10 3/4) / 2	Height	(-8 3/4) / 2			Height	+1/2	Height	+0	Height	+1/2
	Width	-7 1/8	Width	-6 1/8	Width	-3/4			Width	-3/4	Width	+0
Unit Size	Height	(-10 1/4) / 2	Height	(-9 1/4) / 2	Height	-1/2			Height	-1/2	Height	+0
	Width	-6 3/8	Width	-5 3/8	Width	+0	Width	+3/4			Width	+3/4
Masonry Opening	Height	(-9 3/4) / 2	Height	(-8 3/4) / 2	Height	+0	Height	+1/2			Height	+1/2
	Width	-7 1/8	Width	-6 1/8	Width	-3/4	Width	+0	Width	-3/4		
	Height	(-10 1/4) / 2	Height	(-9 1/4) / 2	Height	-1/2	Height	+0	Height	-1/2		

### FRAME TO UNIT ADDERS

WM180 Brickmould	3/8" Subsill	+ 2 13/16	Width
		+ 1 3/4	Height
	1 1/4" Subsill	+ 2 13/16	Width
		+ 2 11/16	Height
	2 1/4" Subsill	+ 2 13/16	Width
		+ 3 11/16	Height
Williamsburg Casing	3/8" Subsill	+ 6 1/2	Width
		+ 3 5/8	Height
	1 1/4" Subsill	+ 6 1/2	Width
		+ 4 1/2	Height
	2 1/4" Subsill	+ 6 1/2	Width
		+ 5 1/2	Height
3 1/2" Flat Casing	3/8" Subsill	+ 5 7/8	Width
		+ 3 5/16	Height
	1 1/4" Subsill	+ 5 7/8	Width
		+ 4 3/16	Height
	2 1/4" Subsill	+ 5 7/8	Width
		+ 5 3/16	Height



**NOTE: RIGID NAIL FIN AND ALL CASING OPTIONS ARE APPLIED WITH SCREWS THAT SLIGHTLY PROTRUDE IN TO ROUGH OPENING BY 1/8". THESE SCREWS ARE NOT INCLUDED IN ROUGH OPENING CALCULATIONS.**

**NOTE: ADD 3/4" TO UNIT WIDTH AND 1/2" TO UNIT HEIGHT TO CALCULATE MASONRY OPENING.**