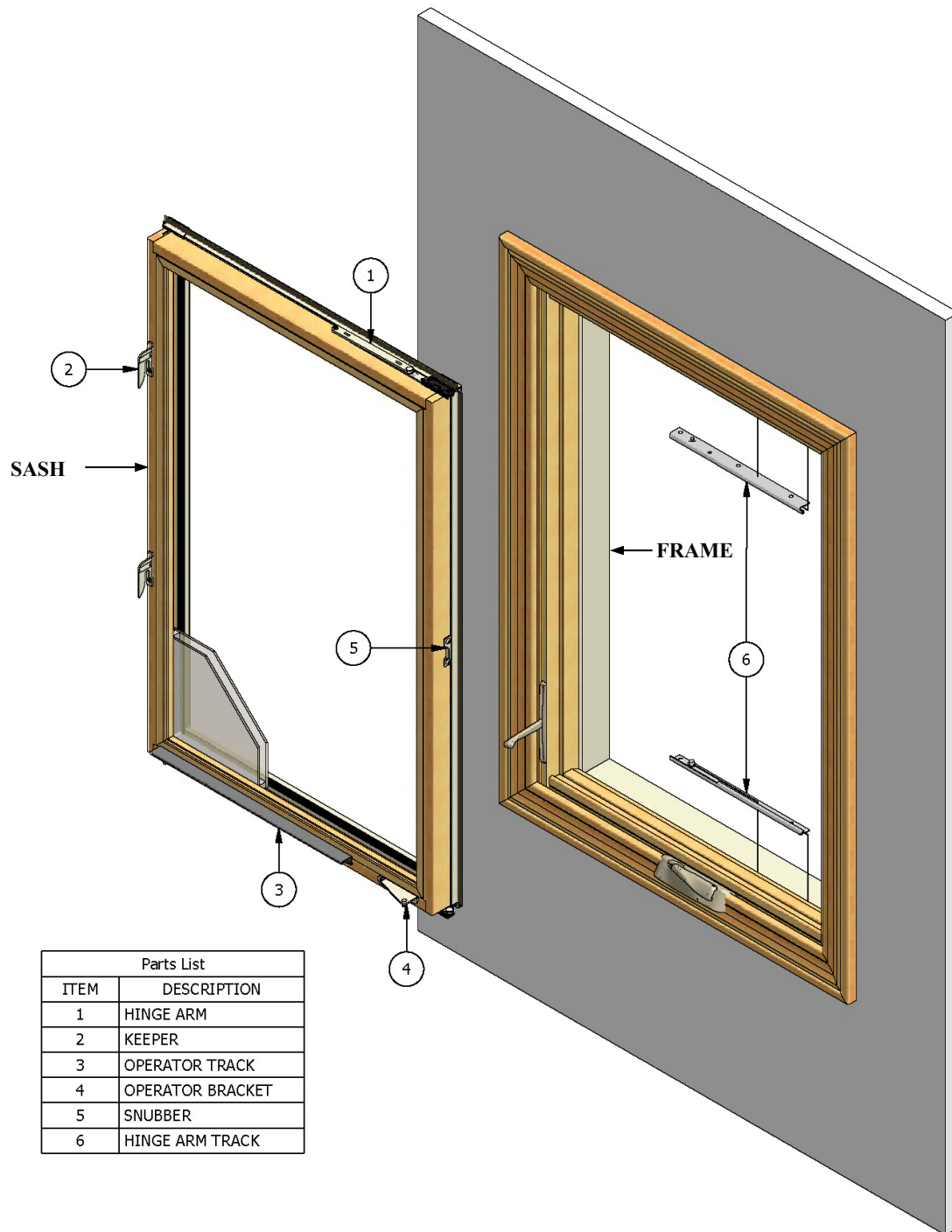


Windsor Series Operating Casement/Awning Sash Conversion

Windsor Series to Pinnacle Series

Parts Identification



Note: Pinnacle Series sash and frame shown. Unit in field will vary in appearance

Windsor Series Operating Casement/Awning Sash Conversion

Windsor Series to Pinnacle Series

Tools Required

1. Sturdy Putty Knife
2. Philips Head Screwdriver

Windsor Series Sash and Component Removal

1. Unlock the window.
2. Open the sash.
3. Remove the sash.
(This step will require 2 people to properly and safely remove the sash from the unit)
 - a. Align the long operator arm with the notch in the operator track. Lower the long operating arm from the operator track.
 - b. Insert a sturdy putty knife between the short operator arm and the operator bracket. Rotate the putty knife until the short operator arm is separated from the operator bracket. Note that depending on the age of the window, the short operator arm slide lock may need to be disengaged before separating.
 - c. Insert a sturdy putty knife between the upper and lower hinge arm and hinge arm track.
 - d. Rotate the putty knife until the hinge arms are separated from the hinge arm track studs.
 - e. Slide the sash out of the frame track and remove to the exterior of the home.
4. Remove the Keepers, Operator Track, Operator Bracket and Snubber from the original Windsor Series Sash.

Pinnacle Series Sash and Component Installation

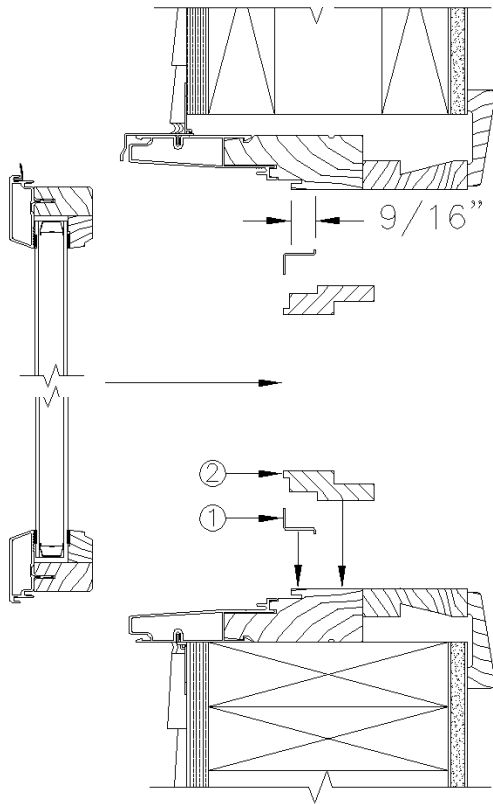
1. Depending on the age of the unit, the installation may require different locks. If different locks were supplied, install the locks in place of the current lock using the current lock screws.
2. Using a Philips head screwdriver, install the sash hardware using the pre-drilled holes to locate the hardware.
 - a. Depending on the age of the unit, the replacement sash may come with special keepers to complete the conversion. Do not replace the installed keepers on the sash.
 - b. Top and bottom hinge arms will also come applied to the replacement sash. Do not replace the installed hinge arms on the sash.
3. Install the sash.
 - a. Install the sash hinge arms into the frame tracks, by sliding the black hinge arm pivot arms into the track.
 - b. Snap the hinge arms to frame track rivets.
 - c. Re-apply the long and short operator arms to the sash hardware.
3. Operate the sash to ensure proper installation.
4. Close and lock the window.

Windsor Series Picture/Transom Casement Sash Conversion

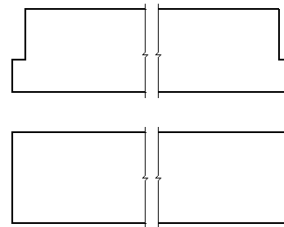
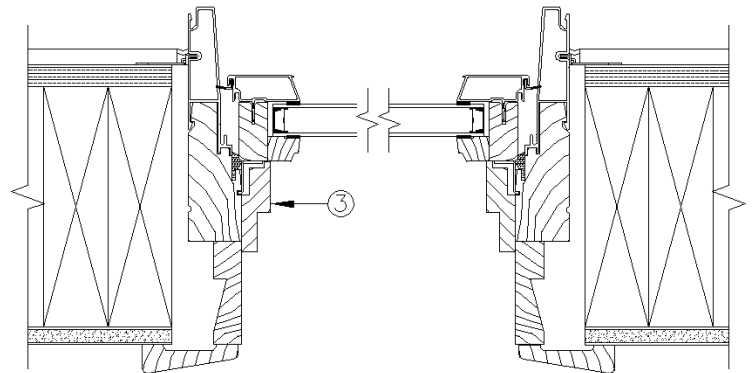
Windsor Series to Pinnacle Series

Parts Identification

Exploded Head/Sill Section Detail



Assembled Jamb Section Detail



HEAD/SILL INSIDE STOP ENDWORK

SIDE INSIDE STOP ENDWORK

Parts List	
ITEM	DESCRIPTION
1	STATIONARY CLIP
2	HEAD/SILL INSIDE STOP - WOOD
3	SIDE INSIDE STOP - WOOD
NOT SHOWN	#8 X 3/4" SASH SCREW
NOT SHOWN	#6 X 1" FRAME SCREW

Note: Pinnacle Series sash and frame shown. Unit in field will vary in appearance

Windsor Series Picture/Transom Casement Sash Conversion

Windsor Series to Pinnacle Series

Tools Required

1. Sturdy Putty Knife
2. Philips Head Screwdriver
3. Hammer
4. Nail Gun with 1 1/4" Brad Nails

Windsor Series Sash and Component Removal

1. Remove sash.
(This step will require 2 people to properly and safely remove the sash from the unit)
 - a. From the interior, remove the sash to frame screws along the perimeter of the sash. The screws are located next to the glass.
 - b. Remove the sash to the exterior of the home.
2. Remove inside stops
 - a. Using a putty knife, carefully pry the inside stops from the frame.
 - b. Remove the original inside stop nails from the frame.

Pinnacle Series Sash and Component Installation

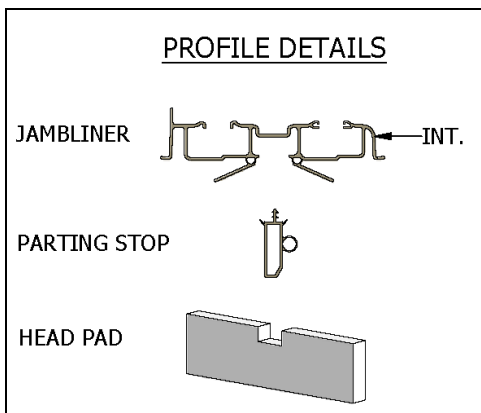
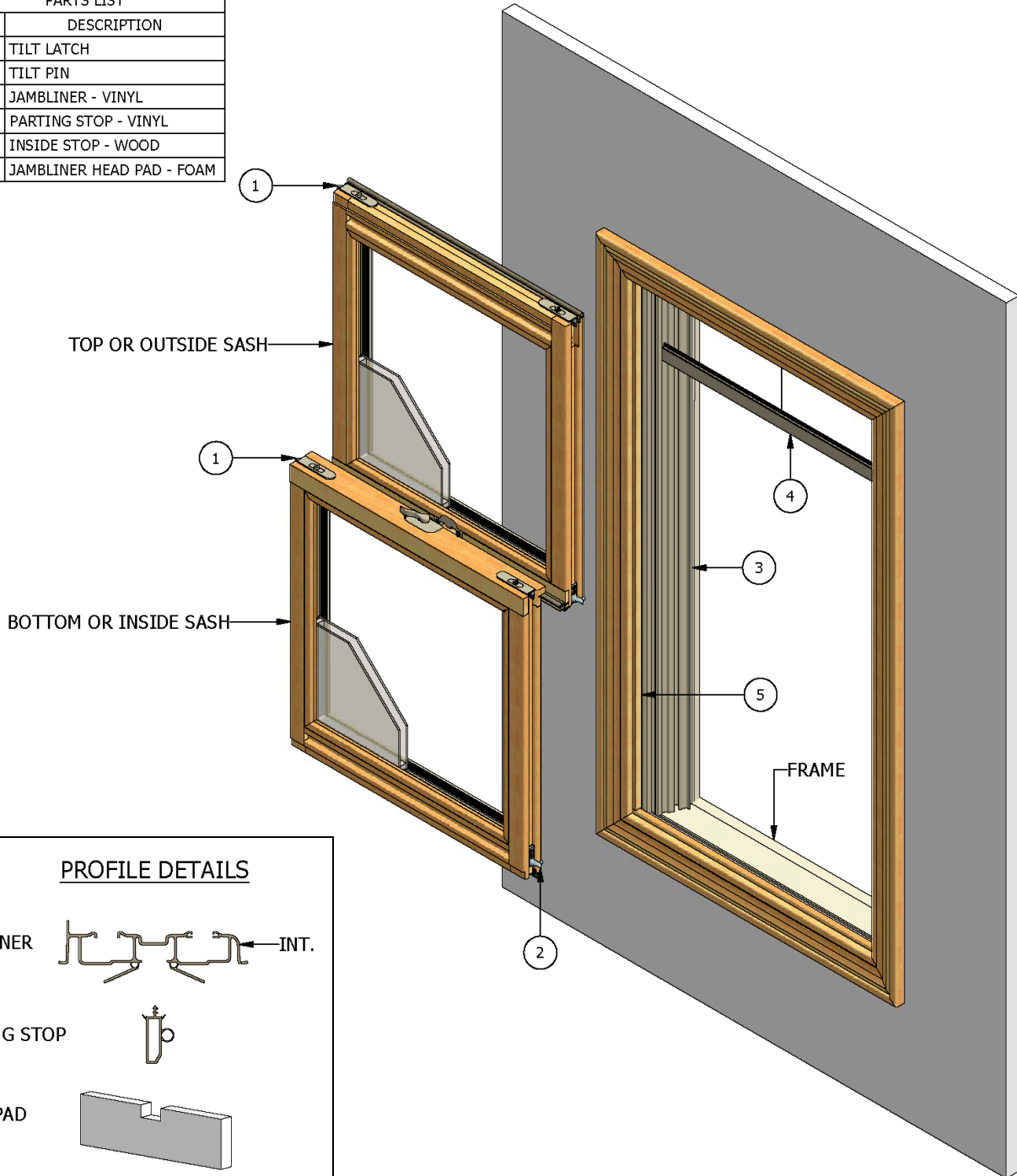
1. Install stationary clips.
 - a. Using a tape measure, mark the frame at a distance of 9/16" from the weatherstrip to frame contact location. See the drawing on page 1 for details.
 - b. Space the clips 4" from each jamb end with an approximate 12" spacing in between; hammer the clips into the jamb using the 9/16" spacing.
 - c. Using the #6 x 1" frame screws, screw the clip to the jamb along the perimeter.
2. Install the sash.
(This step will require 2 people to properly and safely install the sash)
 - a. From the exterior, place the sash in the frame. Note that the sash will have weatherstrip on 3 of the 4 sides. The bottom of the sash will not have weatherstrip applied.
 - b. Using the #8 x 3/4" sash screws, secure the sash into the frame.
3. Install the inside stops.
 - a. Place the side inside stops in the frame followed by the head and sill inside stops. The head and sill inside stops will have notched endwork and the side inside stops will have straight endwork. See the drawing on page 1 for details.
 - b. Nail the inside stops into the frame using an 1 1/4" brad nail.

Windsor Series Double Hung Sash Conversion

Windsor Series to Pinnacle Series

Parts Identification

PARTS LIST	
ITEM	DESCRIPTION
1	TILT LATCH
2	TILT PIN
3	JAMBLINER - VINYL
4	PARTING STOP - VINYL
5	INSIDE STOP - WOOD
NA	JAMBLINER HEAD PAD - FOAM



Note: Pinnacle Series sash and frame shown. Unit in field will vary in appearance

Windsor Series Double Hung Sash Conversion

Windsor Series to Pinnacle Series

Tools Required

1. Pliers
2. Philips Head Screwdriver
3. Sturdy Putty Knife
4. Drill w/ 1/2" Drill Bit

Windsor Series Sash and Component Removal

1. Unlock the window.
2. Remove the bottom or inside sash.
 - a. Lift the bottom or inside sash approximately 4".
 - b. Press one side of the jambliner at the sash meeting rail. While pressing, pull the sash towards the interior of the home disengaging it from the jambliner.
 - c. Press the other jambliner and rotate the sash out of the jambliner.
 - d. Rotate in the sash to approximately 90deg towards the interior of the home.
 - e. Raise one side of the sash disengaging the tilt pin from the jambliner.
 - f. Slightly raise the other side of the sash to disengage the other tilt pin from the jambliner.
 - g. Remove the sash from the unit.
3. Remove the top or outside sash.
 - a. Lower the top or outside sash approximately 6".
 - b. Repeat step 2. b-g for removal.
4. Remove both Jambliners.
 - a. Insert a sturdy putty knife between the jambliner and the interior wood stop.
 - b. Pull the putty towards the interior of the home, prying the jambliner from the unit.
 - c. Continue to use the putty knife along the length of the jambliner until removed.
 - d. Repeat step 4 for the other jambliner.
5. Using pliers, pull out the parting stop from the head jamb.

Pinnacle Series Sash and Component Installation

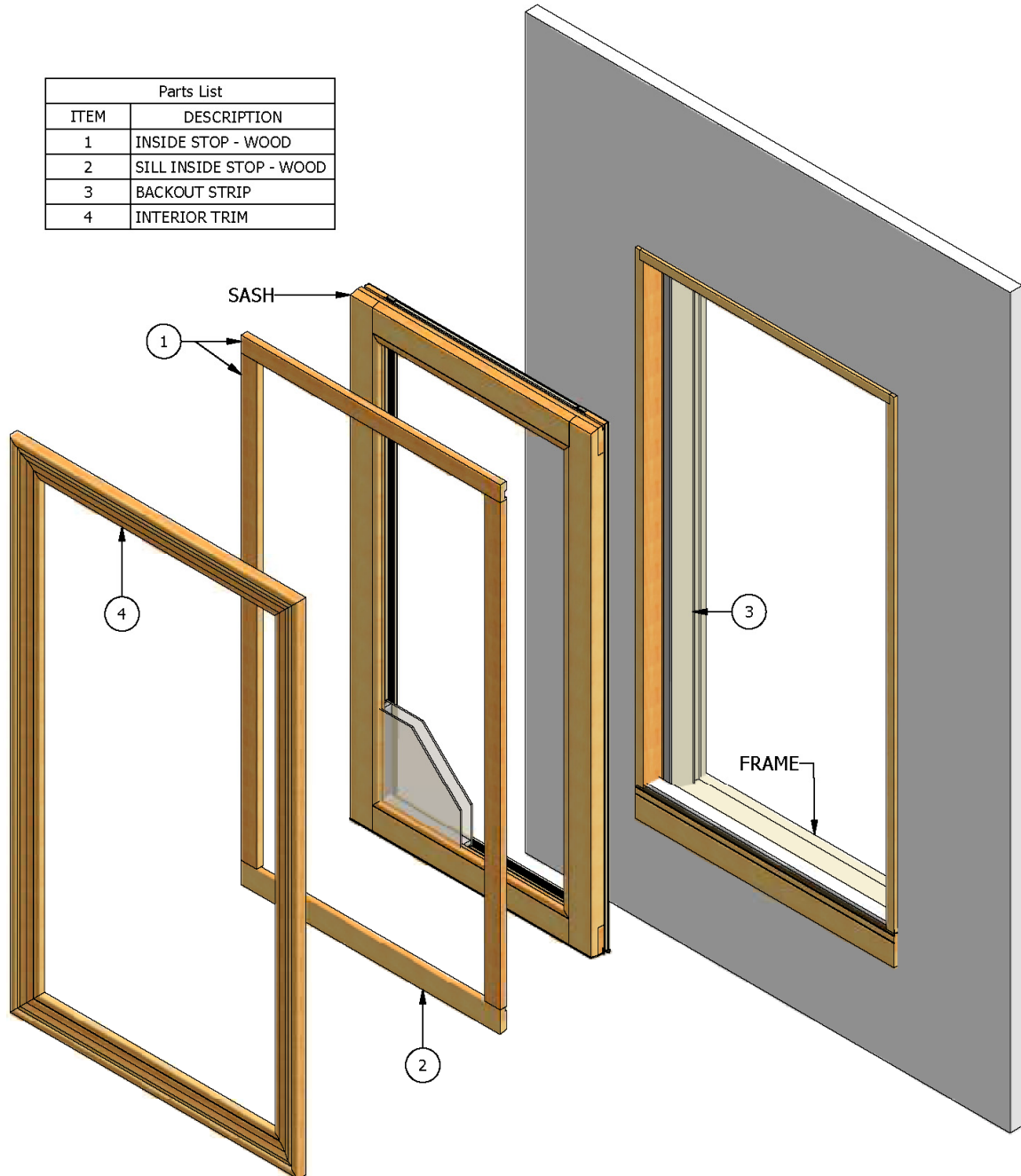
1. Install the jambliners.
 - a. Install the left and right vinyl jambliners between the inside and outside stops. Place foam pads on each side of the head jamb directly above the jambliner.
 - b. Jambliners should be touching the sill and the "flange" side touching the outside blind stop.
2. Install the parting stop.
 - a. Install the parting stop into the kerf located in the head jamb. Center the parting stop between the two jambliners. Ensure that the weatherstrip bulb is facing the exterior.
3. Before installing the sash, make sure the jambliner shoes line up where the sash tilt pins will be inserted. If they don't, insert a screwdriver into the slot of the highest shoe and pull down until it is of a similar height as the other.
4. Hold the sash so the outside surface of the sash is facing up and the tilt pins at the end of the sash are closest to the windows.
5. Install the top or outside sash first.
 - a. Insert the tilt pins into the jambliner friction shoes.
 - b. Tilt the sash up and inserting the tilt latches into the jambliners.
 - c. Lift the sash to the top of the unit. Mark the head jamb where the sash tilt latch comes into contact.
 - d. Using a 1/2" drill bit, drill a 1/4" deep hole for clearance of the tilt latch.
6. Follow step 5 to complete the installation of the bottom or inside sash.
7. Operate the sash to ensure proper installation.
8. Close and lock the window.

Windsor Series Double Hung Picture Sash Conversion

Windsor Series to Pinnacle Series

Parts Identification

Parts List	
ITEM	DESCRIPTION
1	INSIDE STOP - WOOD
2	SILL INSIDE STOP - WOOD
3	BACKOUT STRIP
4	INTERIOR TRIM



Note: Pinnacle Series sash and frame shown. Unit in field will vary in appearance

Windsor Series Double Hung Picture Sash Conversion

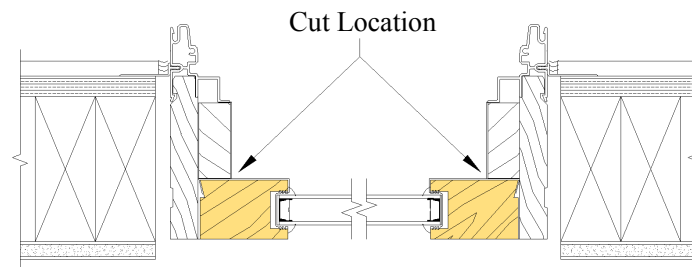
Windsor Series to Pinnacle Series

Tools Required

1. Sturdy Putty Knife
2. Drill with 1/8" Bit
3. Hammer with 1 1/4" Brad Nails
4. Silicone Gun with Clear Silicone
5. Philips Head Screwdriver

Windsor Series Sash and Component Removal

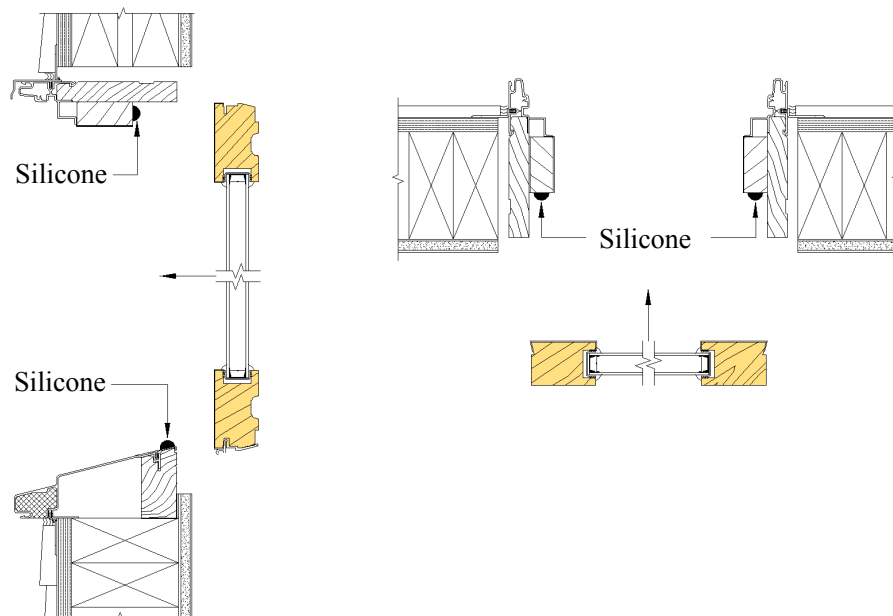
1. Remove the trim surrounding the interior portion of the window.
2. Remove the interior stops from the window frame.
 - a. Remove any remaining nails from the window frame and interior stops
3. From the exterior, cut the silicone/tape from the sash to backout strip joint. See the picture below for details.



4. Remove the sash towards the interior of the home.

Pinnacle Series Sash and Component Installation

1. Place a 1/4" bead of silicone along the inside edge of the backout strip. See the drawing below for details.
2. Place a 1/4" bead of silicone along the sill of the window, ensuring that the backout strip silicone bead comes into contact with the sill silicone bead. See the drawing below for details.

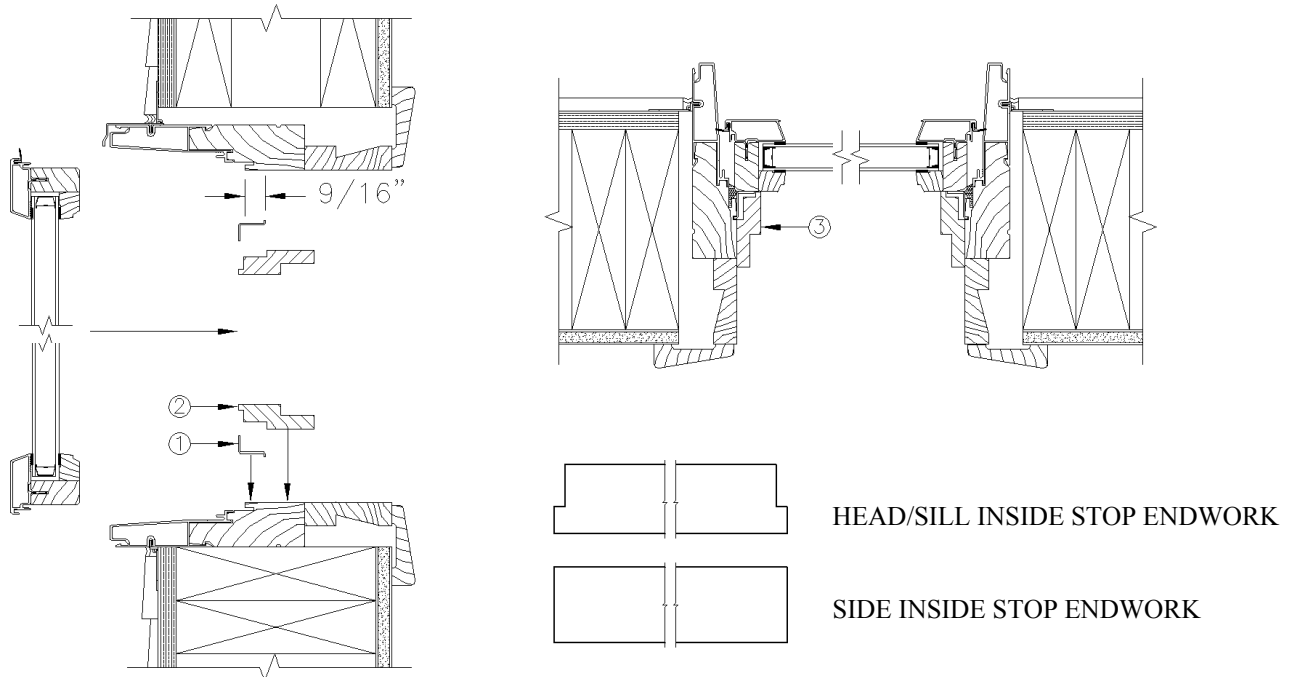


3. Set the sash into the window frame.
4. Re-install the interior stops using 1 1/4" brad nails.
5. Re-install the interior window trim.

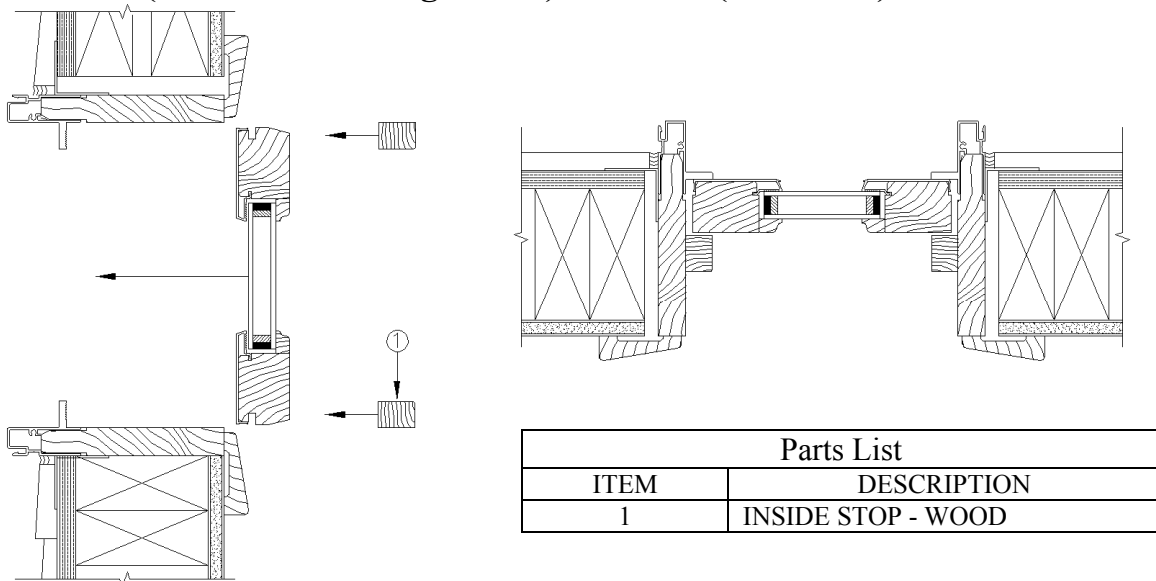
Windsor Series Double Hung Transom Sash Conversion

Windsor Series to Pinnacle Series

Clad (September '97 to June '01) Installation



Clad (March '93 to August '97) / Primed (All Years) Installation



Note: Pinnacle Series sash and frame shown. Unit in field will vary in appearance

Windsor Series Double Hung Transom Sash Conversion

Windsor Series to Pinnacle Series

Tools Required

1. Sturdy Putty Knife
2. Philips Head Screwdriver
3. Hammer
4. Silicone Gun with Clear Silicone
5. Nail Gun with 1 1/4" Brad Nails

Clad (September '97 to June '01) Installation

Windsor Series Sash and Component Removal

1. Remove sash.
(This step will require 2 people to properly and safely remove the sash from the unit)
 - a. From the interior, remove the sash to frame screws along the perimeter of the sash. The screws are located next to the glass.
 - b. Remove the sash to the exterior of the home.
2. Remove inside stops
 - a. Using a putty knife, carefully pry the inside stops from the frame.
 - b. Remove the original inside stop nails from the frame.

Pinnacle Series Sash and Component Installation

1. Install stationary clips.
 - a. Using a tape measure, mark the frame at a distance of 9/16" from the weatherstrip to frame contact location. See the drawing on page 1 for details.
 - b. Space the clips 4" from each jamb end with an approximate 12" spacing in between; hammer the clips into the jamb using the 9/16" spacing.
 - c. Using the #6 x 1" frame screws, screw the clip to the jamb along the perimeter.
2. Install the sash.
(This step will require 2 people to properly and safely install the sash)
 - a. From the exterior, place the sash in the frame. Note that the sash will have weatherstrip on 3 of the 4 sides. The bottom of the sash will not have weatherstrip applied.
 - b. Using the #8 x 3/4" sash screws, secure the sash into the frame.
3. Install the inside stops.
 - a. Place the side inside stops in the frame followed by the head and sill inside stops. The head and sill inside stops will have notched endwork and the side inside stops will have straight endwork. See the drawing on page 1 for details.
 - b. Nail the inside stops into the frame using an 1 1/4" brad nail.

Clad (March '93 to August '97) / Primed (All Years) Installation

Windsor Series Sash and Component Removal

1. Remove inside stops.
 - a. Using a putty knife, carefully pry the inside stops from the frame.
 - b. Remove any remaining inside stop nails from the frame.
2. Remove sash.
 - a. From the exterior, cut the silicone from the sash to frame joint.
 - b. Remove the sash towards the inside of the home.
 - c. Clean any remaining silicone from the frame.

Pinnacle Series Sash and Component Installation

1. Apply a 1/4" bead of clear silicone around the perimeter of the frame.
2. Set the sash into the window frame.
3. Re-install the interior stops using 1 1/4" brad nails.