

Pinnacle Series Brickmould and Jamb Options

Brickmould Option Pricing
Option BMA - Stucco routed casing
Option BMB - Exterior casing for jambs less than 4-9/16" to 4-1/8"
Option BMC - Stucco routed casing for jambs less than 4-9/16" to 4-1/8"
Option BMD - Exterior casing with 7/16" stucco spacer for jambs less than 4-1/8" to 3-1/2"
Option BME - Exterior casing with 7/16" stucco spacer for jambs less than 4-9/16" to 4-1/8"

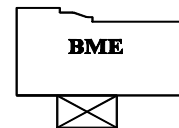
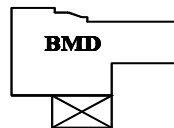
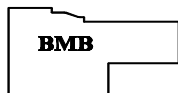
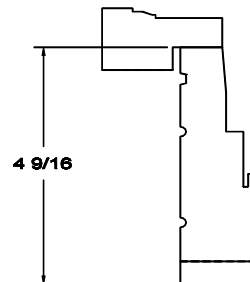
*Add 7/16" to the overall desired jamb thickness.

**Add 7/8" to the overall desired jamb thickness.

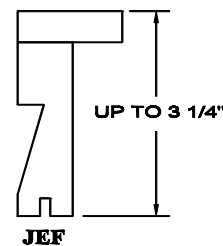
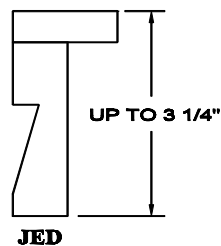
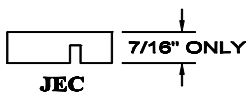
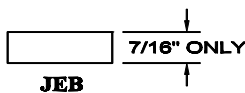
Order Example: BMB Option and desired jamb of 4-1/8"

Order the jamb size as 4-9/16". Once the brickmould is applied to the unit the jamb size becomes 4-1/8" overall due to the 7/8" backset.

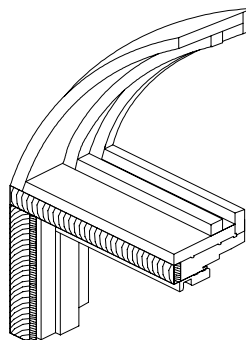
If the option were BMD it would still be ordered as 4-9/16" however, the overall jamb would become 3-11/16" due to the 7/8" backset.



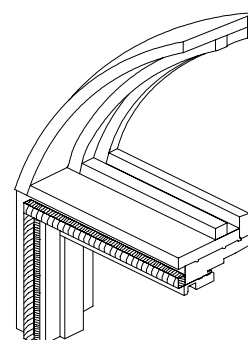
Extension Jamb Options
Option JEB - Full width extension jamb for 4-9/16"
Option JEC - Full width extension jamb for 4-9/16" with kerf
Option JED - Two-piece flush jamb option up to 7-1/4"
Option JEF - Two-piece flush jamb option up to 7-1/4" with kerf



Casement, Awning and Direct Set frames are 1-1/4" thickness versus 3/4" thickness for other window/door types. Because of this difference in frame thickness one of the jamb options listed above must be used for proper trim alignment when mulling OR aligning a Casement, Awning or Direct Set unit with ANY other product type. The example to the right shows the jamb alignment required when mulling a radius unit to a direct set. In this instance you would use option JEB or JEC if the jamb size is 4-9/16". If the jamb size were larger than this then you would use JED or JEF. Please specify any required jamb options when ordering.



Full Width Jamb



Standard Jamb