

# Next Dimension Signature Series

## RADIUS

ELEVATIONS : STANDARD & SPECIAL RADIUS

SCALE: 1/8" = 1'-0"

### STANDARD RADIUS

#### FULL ROUND



FR24



FR 36



OVL 2436

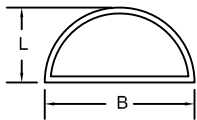


OVL 3628

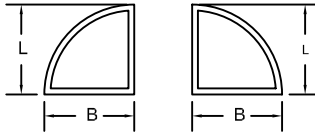
#### OVAL

### SPECIAL RADIUS SHAPES CHART

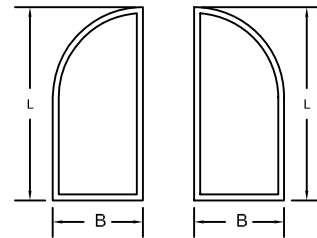
(UNITS MUST BE ORDERED BY ROUGH OPENING DIMENSIONS)



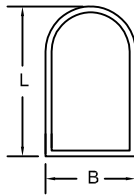
HR  
"HALF ROUND"



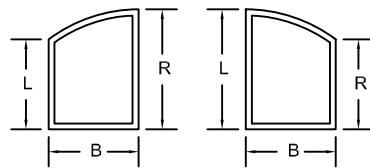
QR-1 QR-2  
"QUARTER ROUND"



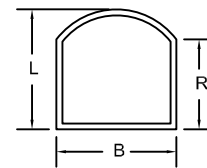
QRP-1 QRP-2  
"EXTENDED QUARTER"



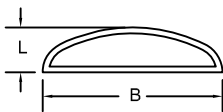
RTP  
"ROUND TOP PICTURE"



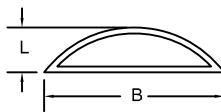
STP-1 STP-2  
"SEG-TOP QUARTER" "SEG-TOP QUARTER"



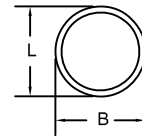
SEG  
"SEG-TOP PICTURE"



ELL  
"ELLIPSE"



EYE  
"EYEBROW"



FUL  
"FULL ROUND"

#### Ordering Procedures

1. Select the shape by the unit code listed below the desired drawing.
2. Include the required dimensions as noted on the drawings.
3. If a grille is being ordered please be sure to include a sketch of the pattern.
4. If a specific or continuous radius is needed please note this on the order.

#### SIZE LIMITATIONS

1. The maximum for any one dimension is 96 inches.
2. The minimum base dimension is 24 inches.
3. The minimum leg dimension is 6 inches.
4. The maximum square footage allowed is 48 square feet.
5. The Aspect Ratio is 7 to 1 maximum.
6. Minimum 8" diameter for radius innergrille bars.
7. Minimum glass parameters: One leg must be at least 8" - minimum square footage is .776 (charged for 2 square feet).
8. Minimum radius for ovals, including extension jamb and trim, is a radius 24" x 36" overall dimension.
9. Both width and height may not exceed 84" on the same unit due to glass restrictions.
10. For units with obscure glass, largest available size is 58" x 82".
11. Any one unit cannot have glass smaller than 8" x 12".