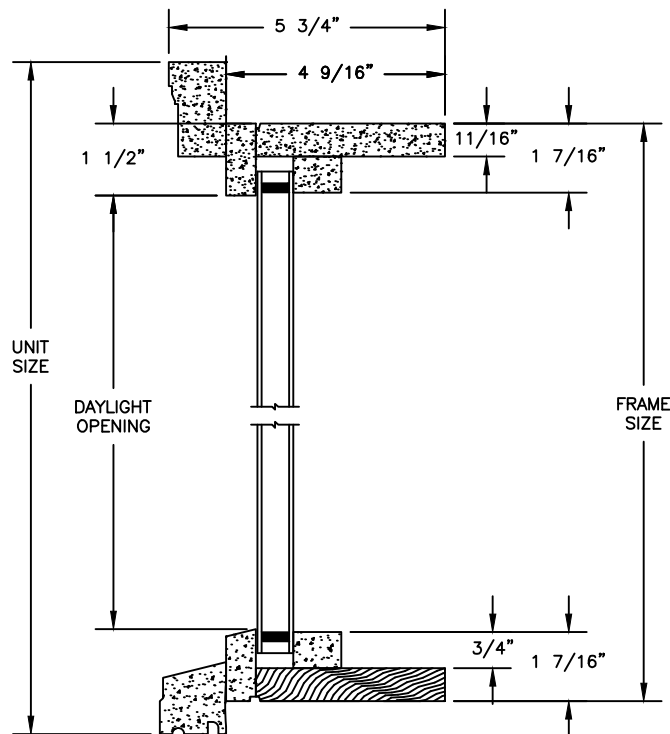


Legend Series

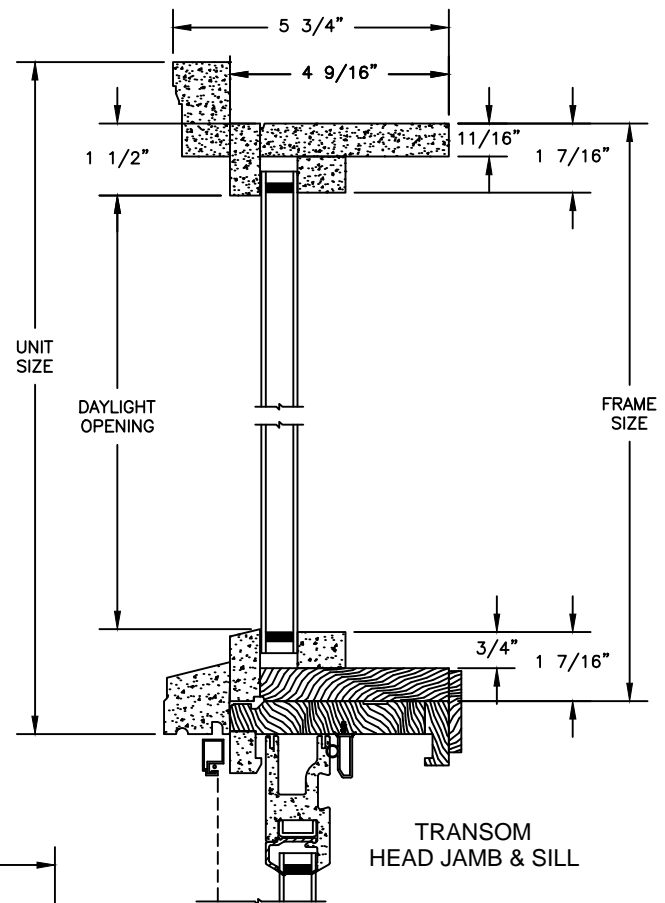
LEGEND RADIUS

SECTION DETAILS : DIRECT GLAZE

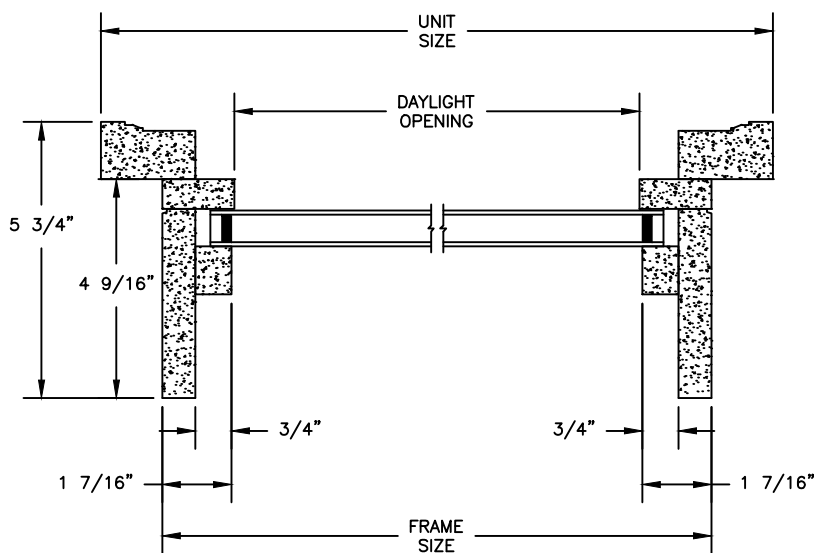
SCALE: 3" = 1'-0"



HEAD JAMB & SILL

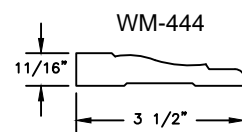
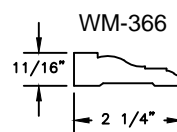
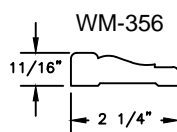
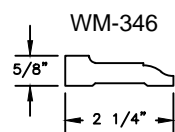
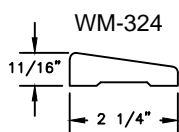


TRANSOM
HEAD JAMB & SILL



HALF ROUNDS, FULL ROUNDS & OVALS
JAMB

AVAILABLE INTERIOR TRIM PROFILES

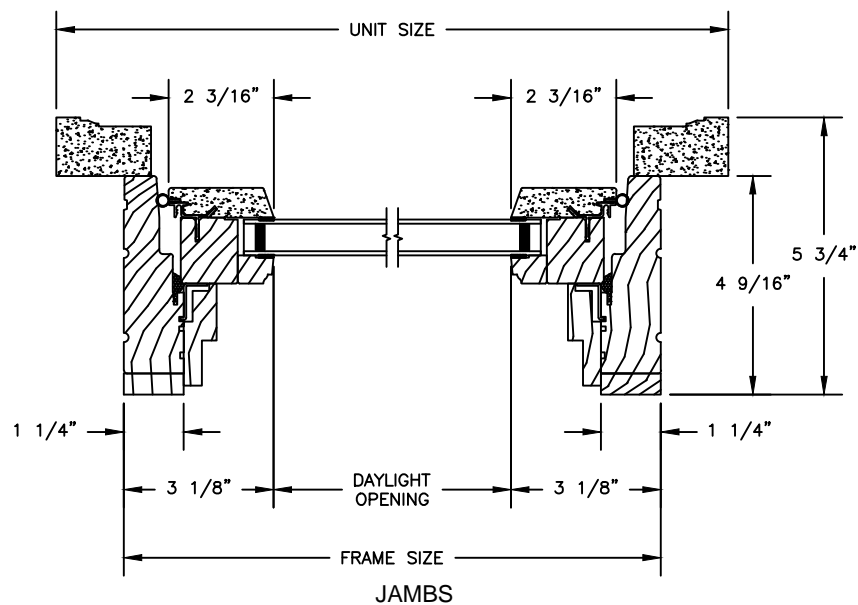
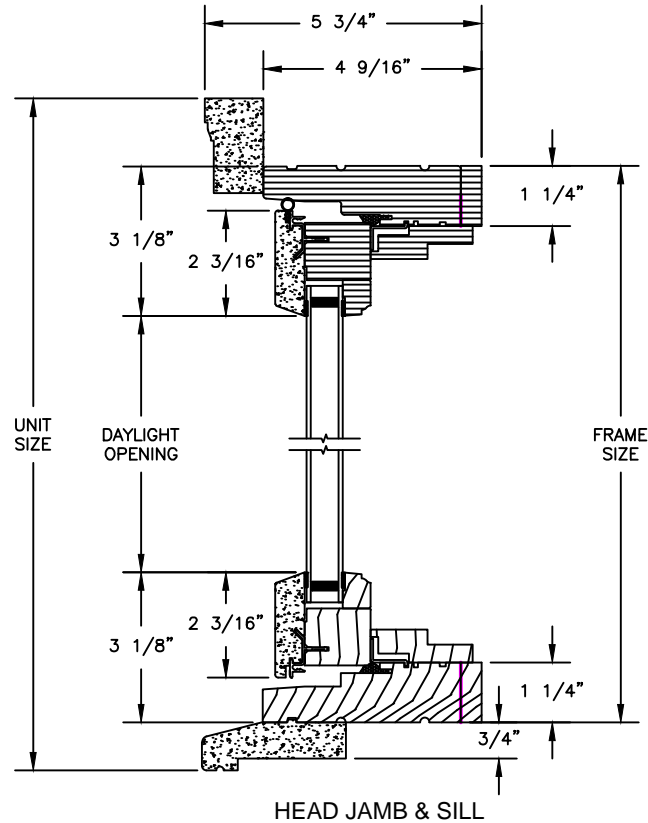


Legend Series

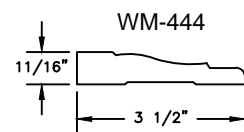
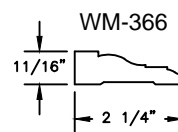
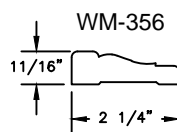
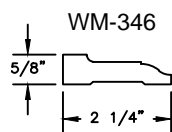
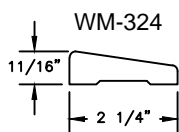
LEGEND RADIUS

SECTION DETAILS : IN-SASH FLAT SILL

SCALE: 3" = 1'-0"



AVAILABLE INTERIOR TRIM PROFILES

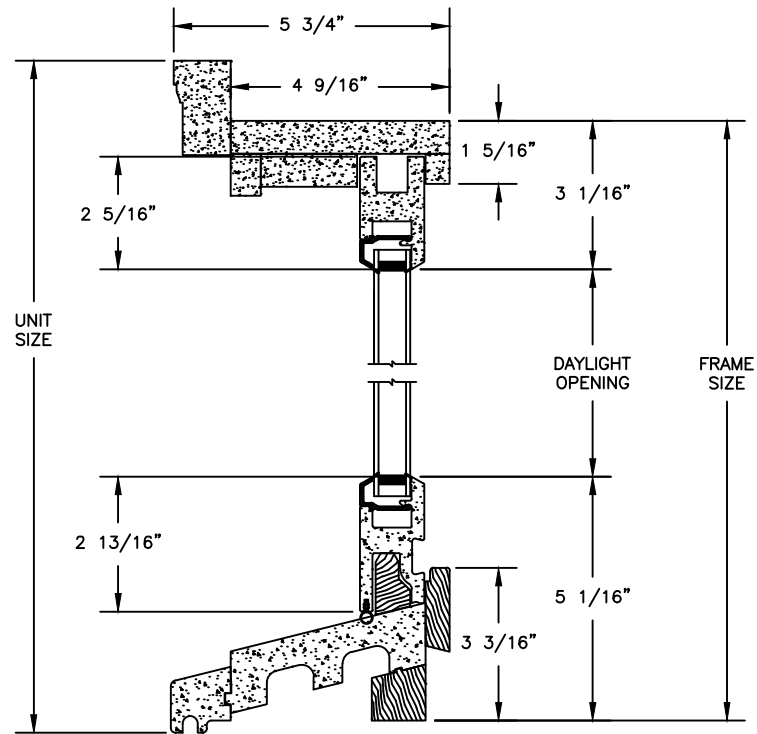


Legend Series

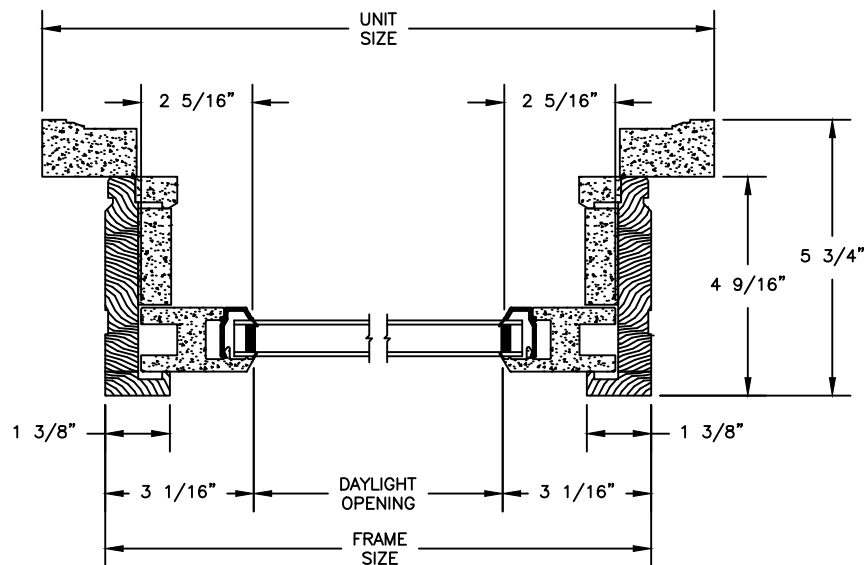
LEGEND RADIUS

SECTION DETAILS : IN-SASH SLOPE SILL

SCALE: 3" = 1'-0"



HEAD JAMB & SILL



JAMBS

AVAILABLE INTERIOR TRIM PROFILES

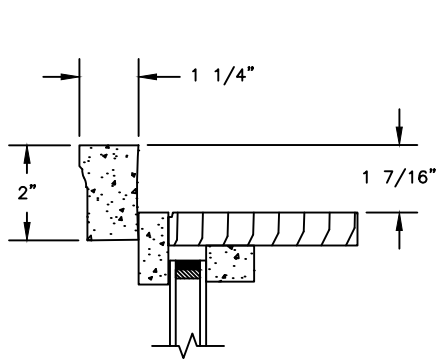


Legend Series

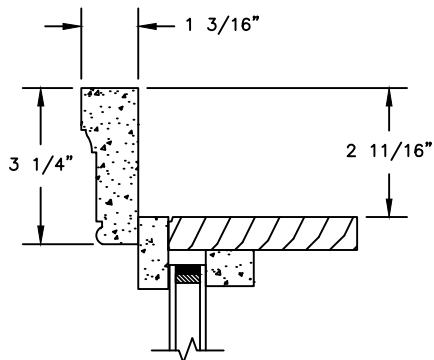
LEGEND RADIUS

SECTION DETAILS : CASING OPTIONS

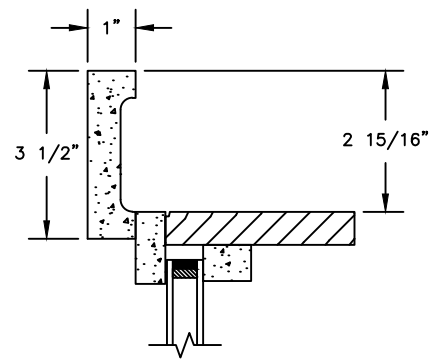
SCALE: 3" = 1'-0"



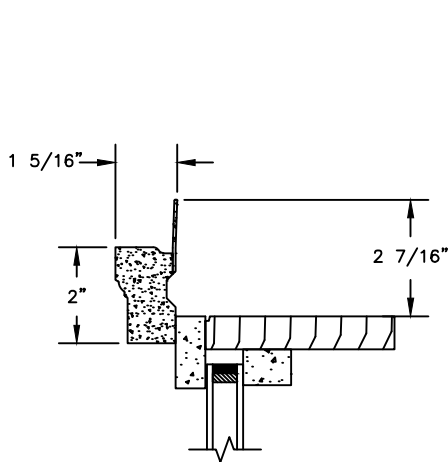
HEAD JAMB WITH
WM180 BRICKMOULD



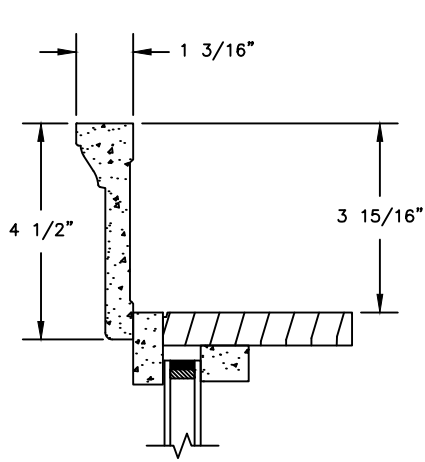
HEAD JAMB WITH
WILLIAMSBURG BRICKMOULD



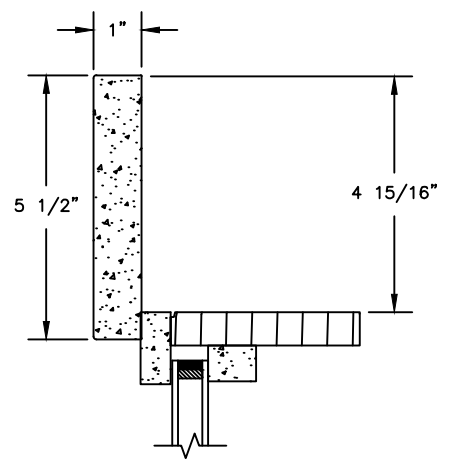
HEAD JAMB WITH
3 1/2" FLAT CASING



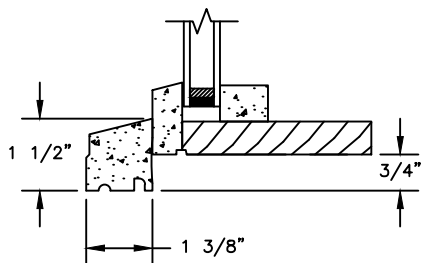
HEAD JAMB WITH
180 FLANGED BRICKMOULD



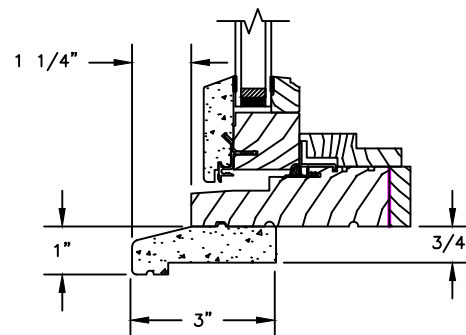
HEAD JAMB WITH
4 1/2" BACKBAND



HEAD JAMB WITH
5 1/2" FLAT CASING



DIRECT GLAZE SILL WITH
STANDARD SILLNOSE



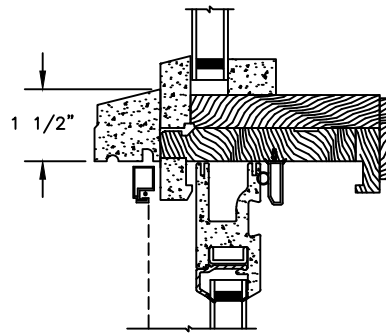
INSASH SILL WITH
STANDARD SUBSILL

Legend Series

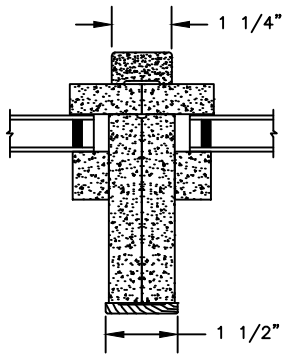
LEGEND RADIUS

SECTION DETAILS : MULLIONS

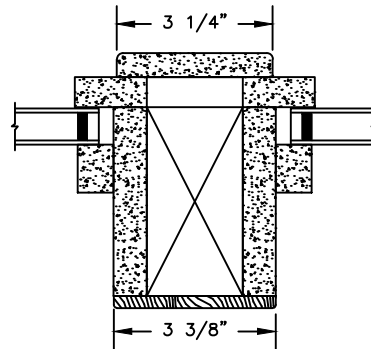
SCALE: 3" = 1'-0"



HORIZONTAL MULLION



VERTICAL MULLION



VERTICAL MULLION OPERATOR
WITH 2" SPREAD MULL

Legend Series

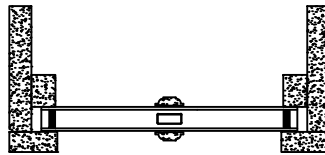
LEGEND RADIUS - DIRECT GLAZE

SECTION DETAILS : DIVIDED LITE OPTIONS

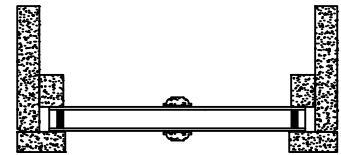
SCALE: 2" = 1'-0"



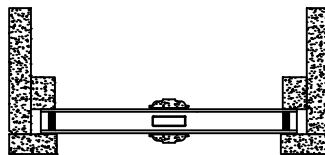
INSULATING GLASS



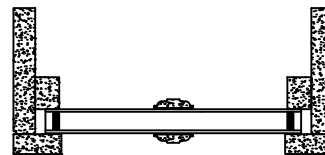
7/8" WDL
WITH INNERBAR



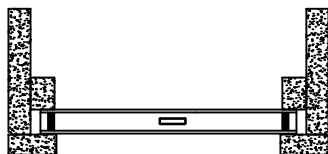
7/8" WDL
WITHOUT INNERBAR



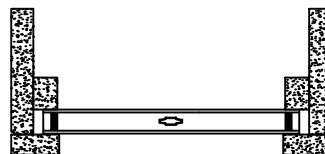
1 1/4" WDL
WITH INNERBAR



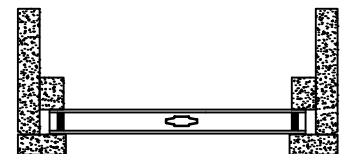
1 1/4" WDL
WITHOUT INNERBAR



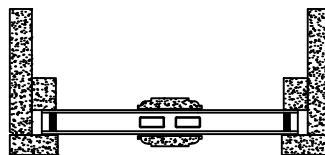
13/16" INNERGRILLE



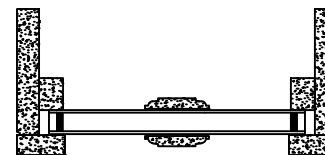
3/4" PROFILED INNERGRILLE



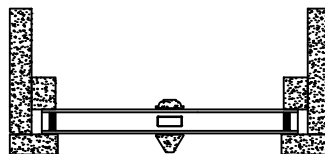
1" PROFILED INNERGRILLE



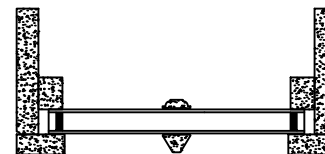
2" SIMULATED CHECK RAIL
WITH INNERBAR



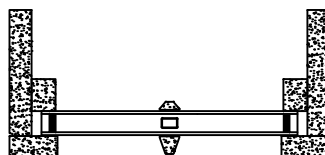
2" SIMULATED CHECK RAIL
WITHOUT INNERBAR



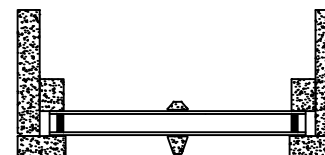
7/8" PUTTY GLAZE
WITH INNERBAR



7/8" PUTTY GLAZE
WITHOUT INNERBAR



5/8" PUTTY GLAZE
WITH INNERBAR



5/8" PUTTY GLAZE
WITHOUT INNERBAR

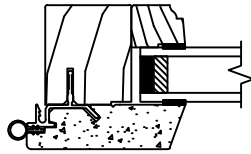
Legend Series

LEGEND RADIUS - IN-SASH

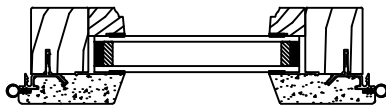
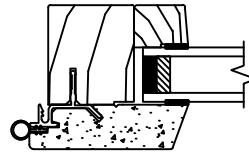
SECTION DETAILS : DIVIDED LITE OPTIONS

SCALE: 3" = 1'-0"

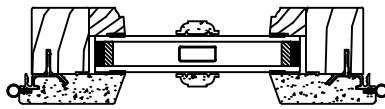
OGEE
GLASS STOP



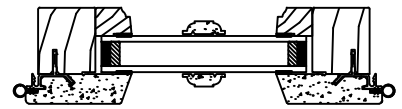
CONTEMPORARY
GLASS STOP



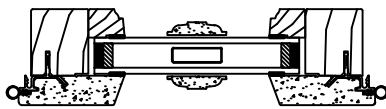
INSULATING GLASS



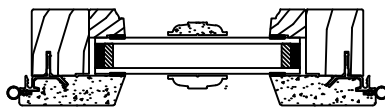
WITH INNERBAR
7/8" WDL



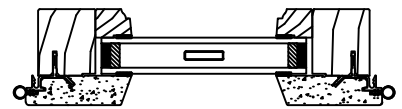
WITHOUT INNERBAR
7/8" WDL



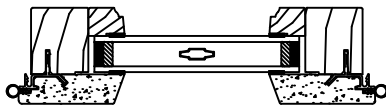
WITH INNERBAR
1 1/4" WDL



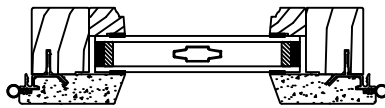
WITHOUT INNER BAR
1 1/4" WDL



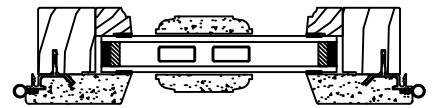
13/16" INNERGRILLE



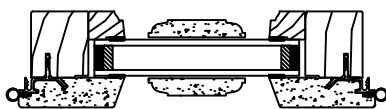
3/4" PROFILED INNERGRILLE



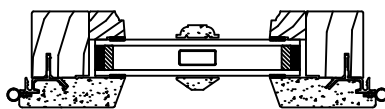
1" PROFILED INNERGRILLE



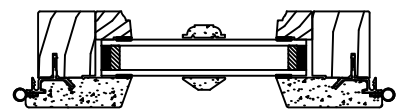
WITH INNERBAR
2" SIMULATED CHECK RAIL



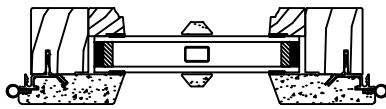
WITHOUT INNERBAR
2" SIMULATED CHECK RAIL



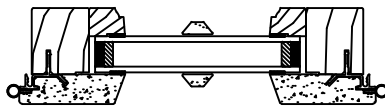
WITH INNERBAR
7/8" PUTTY GLAZE



WITHOUT INNERBAR
7/8" PUTTY GLAZE



WITH INNERBAR
5/8" PUTTY GLAZE



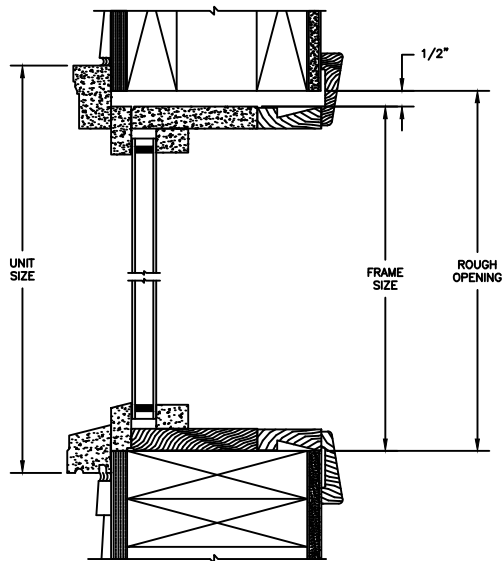
WITHOUT INNERBAR
5/8" PUTTY GLAZE

Legend Series

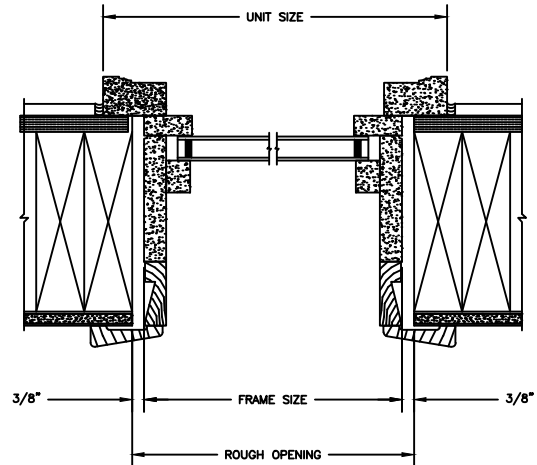
LEGEND RADIUS

SECTION DETAILS : CONSTRUCTION

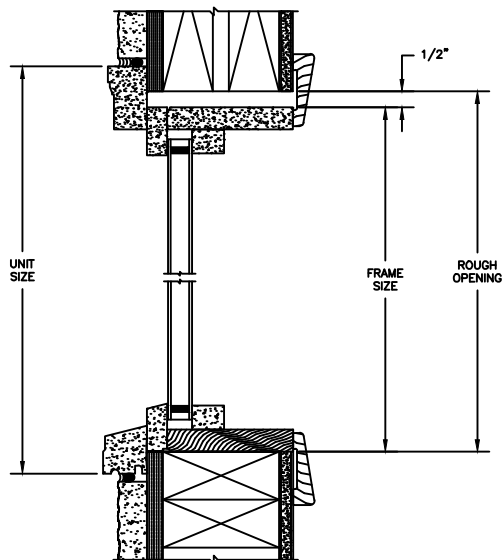
SCALE: 2" = 1'-0"



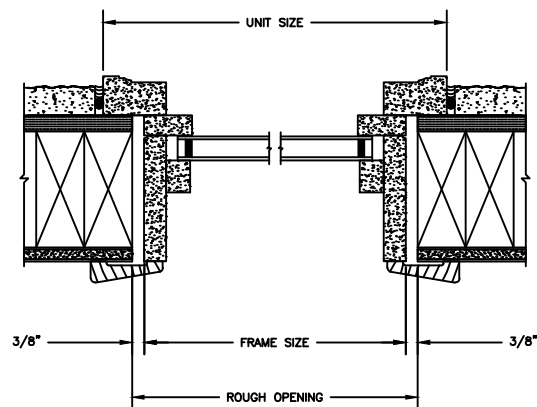
HEAD JAMB & SILL
2 X 6 FRAME WITH SIDING



JAMBS
2 X 6 FRAME WITH SIDING



HEAD JAMB & SILL
2 X 4 FRAME WITH STUCCO



JAMBS
2 X 4 FRAME WITH STUCCO

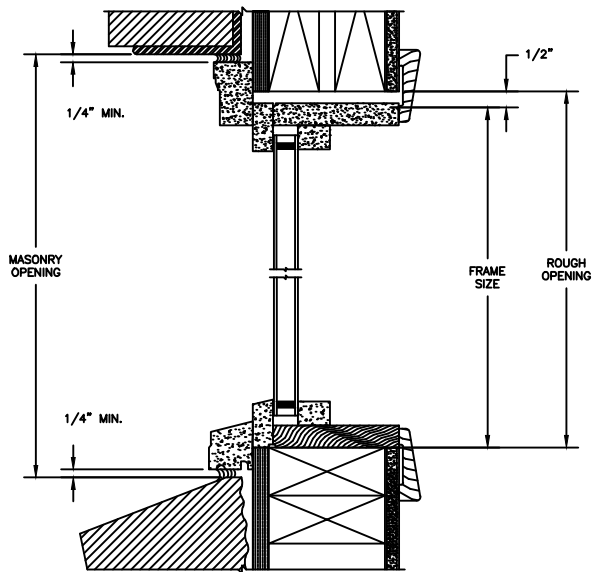
NOTE :
THE ABOVE WALL SECTIONS REPRESENT TYPICAL WALL CONDITIONS, THESE DETAILS ARE NOT INTENDED AS INSTALLATIONS INSTRUCTIONS. PLEASE REFER TO THE INSTALLATION INSTRUCTIONS PROVIDED WITH THE PURCHASED UNITS.

Legend Series

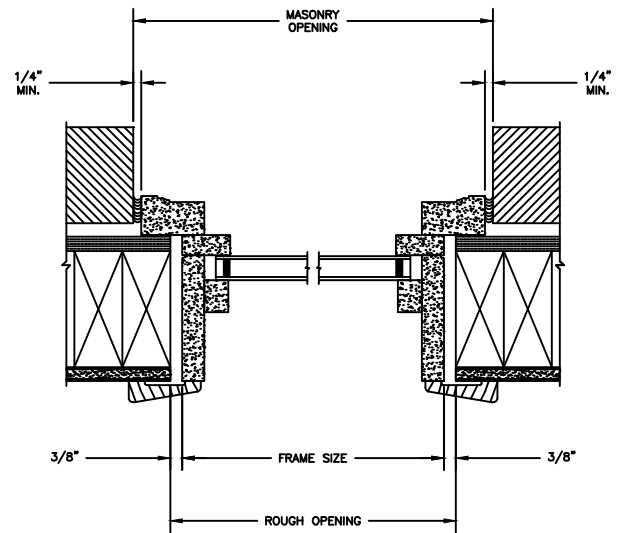
LEGEND RADIUS

SECTION DETAILS : CONSTRUCTION

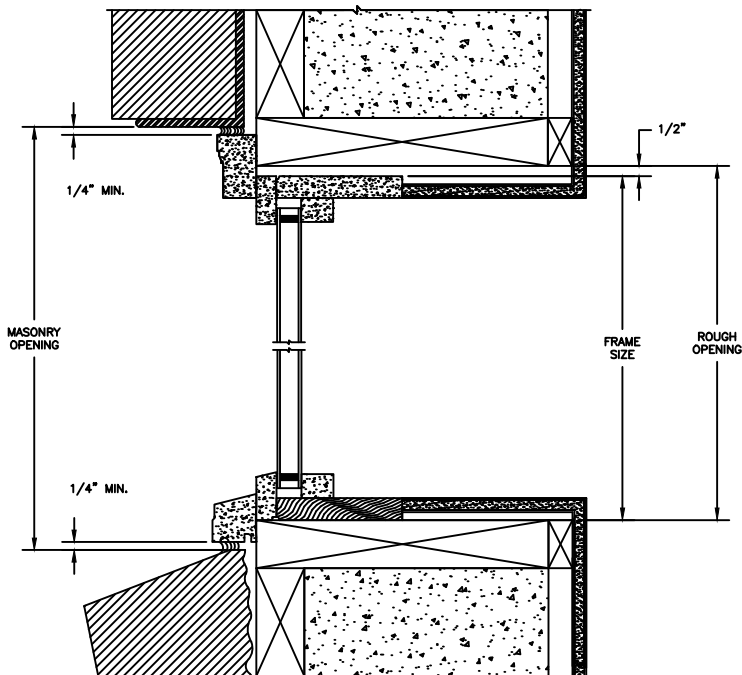
SCALE: 2" = 1'-0"



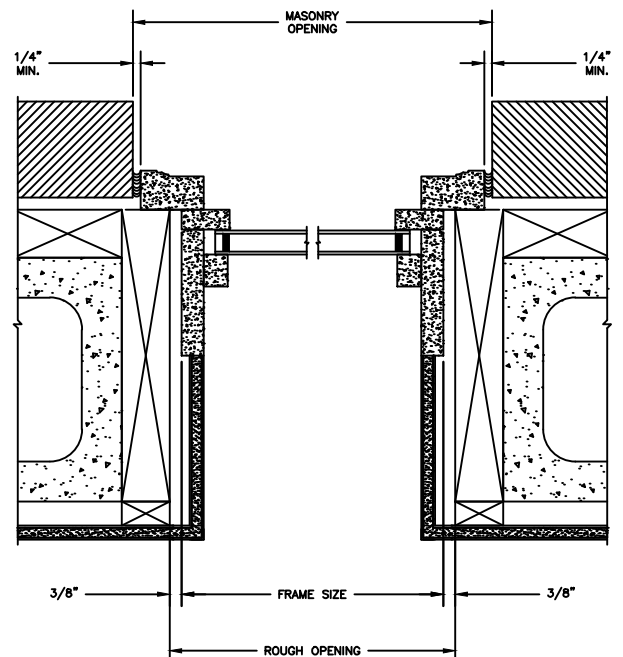
HEAD JAMB & SILL
2 X 4 FRAME WITH BRICK VENEER



JAMBS
2 X 4 FRAME WITH BRICK VENEER



HEAD JAMB & SILL
8" CONCRETE BLOCK WALL
WITH BRICK VENEER



JAMBS
8" CONCRETE BLOCK WALL
WITH BRICK VENEER

NOTE :
THE ABOVE WALL SECTIONS REPRESENT TYPICAL WALL CONDITIONS, THESE DETAILS ARE NOT INTENDED AS INSTALLATIONS INSTRUCTIONS. PLEASE REFER TO THE INSTALLATION INSTRUCTIONS PROVIDED WITH THE PURCHASED UNITS.