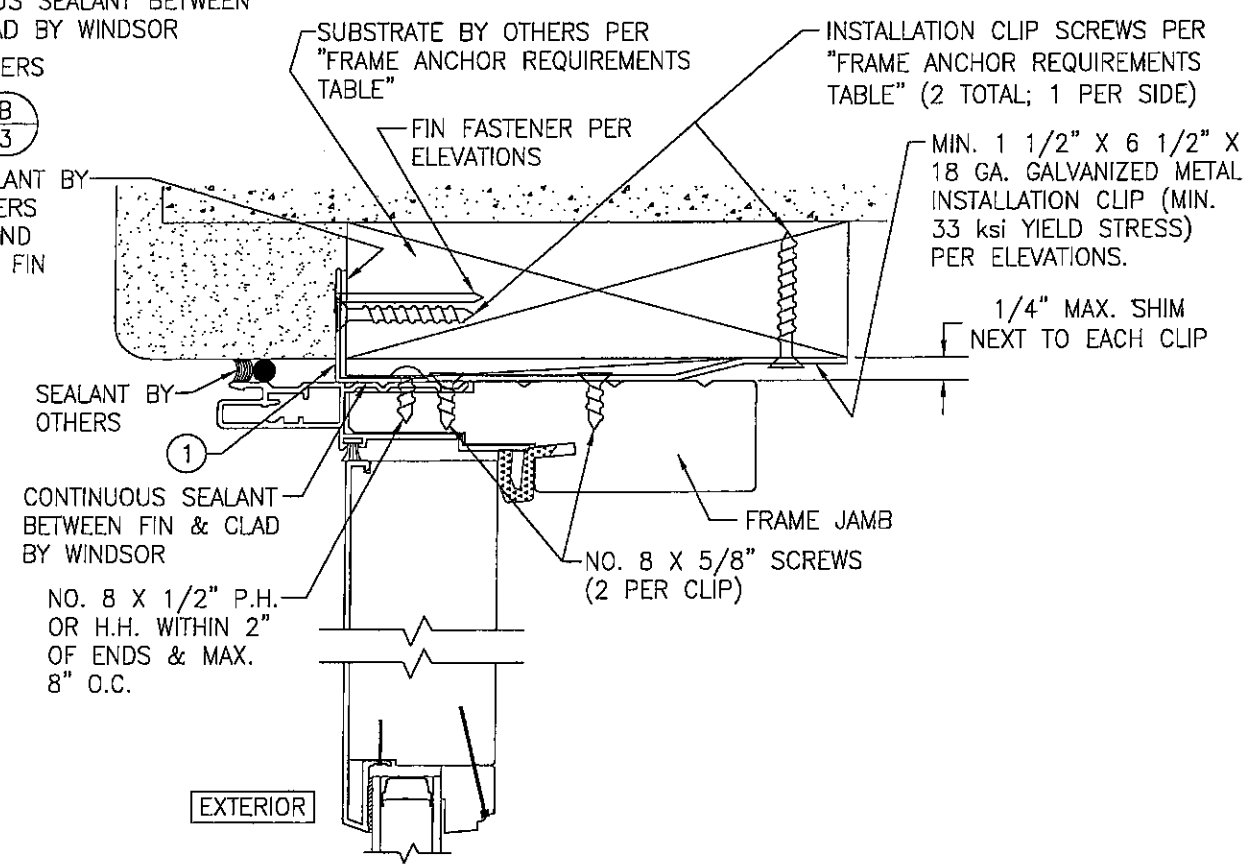


OPTIONAL INSTALLATION CLIP DETAIL 1
(HEAD SECTION SHOWN, SIDES ARE INSTALLED THE SAME)
(NOT APPLICABLE AT SILL)



OPTIONAL INSTALLATION CLIP DETAIL 2
(HEAD SECTION SHOWN, SIDES ARE INSTALLED THE SAME)
(NOT APPLICABLE AT SILL)

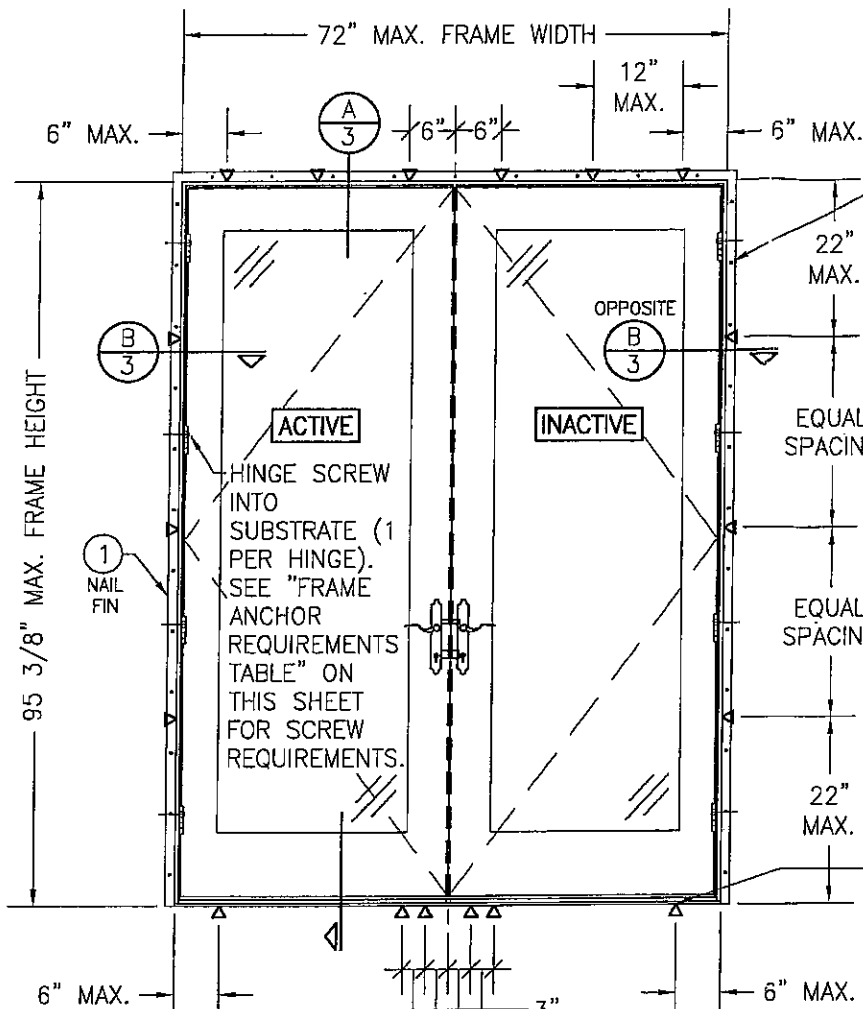
DRAWING TITLE PINNACLE ALUMINUM CLAD WOOD IMPACT OUT-SWING DOORS		DRAWN BY: S.T.R.		CHECKED BY: W.W.S.		
		PLOT: 1-2		DATE: 08/07/06		
DRAWING NO. 1373	SHEET NO. 3	OF 3	NO.	REVISION DESCRIPTION	BY	DATE
CONSULTANTS W. W. SCHAEFER ENGINEERING & CONSULTING, P.A. 8895 N. MILITARY TRAIL, SUITE C-204 PALM BEACH GARDENS, FL 33410 PHONE: 561-775-4902 FAX: 561-775-4903			MANUFACTURER WINDSOR WINDOWS & DOORS 900 S. 19TH STREET WEST DES MOINES, IA 50265 800-218-6186			
CERTIFICATION OCT 01 2018			WARREN W. SCHAEFER, P.E. P.E. NO. 44135			

GENERAL NOTES:

- ALL FASTENERS SHALL BE IN ACCORDANCE WITH THESE DRAWINGS. SPECIFIED ANCHOR EMBED TO BASE MATERIAL SHALL BE BEYOND WALL FINISH OR STUCCO.
- OPENINGS, BUCKING & BUCKING FASTENERS MUST BE PROPERLY DESIGNED & INSTALLED TO TRANSFER WIND LOADS TO THE STRUCTURE.
- THESE LARGE MISSILE IMPACT RATED DOOR SYSTEM INSTALLATIONS ARE IN ACCORDANCE WITH AND MEET THE REQUIREMENTS OF THE FLORIDA BUILDING CODE (FBC).
- ALL ANCHORS SECURING DOOR FRAME TO PRESSURE TREATED BUCKS OR WOOD FRAMING SHALL BE CAPABLE OF RESISTING CORROSION CAUSED BY THE PRESSURE TREATING CHEMICALS IN THE WOOD.
- NO INCREASE IN ALLOWABLE STRESS HAS BEEN USED IN THE CERTIFICATION OF THESE INSTALLATIONS. WIND LOAD DURATION FACTOR $C_d = 1.6$ WAS USED FOR WOOD SCREW ANALYSIS ONLY.
- MATERIALS, INCLUDING BUT NOT LIMITED TO STEEL SCREWS, THAT COME INTO CONTACT WITH OTHER DISSIMILAR MATERIALS SHALL MEET THE REQUIREMENTS OF FLORIDA BUILDING CODE CHAPTER 20.
- TO THE BEST OF OUR KNOWLEDGE, THE DOORS SHOWN HEREIN ARE CERTIFIED & QUALITY ASSURED BY A FLORIDA STATE APPROVED CERTIFICATION/QA ENTITY & SHALL BE LABELED IN ACCORDANCE WITH THE FBC AND THE 9B-72 FLORIDA BUILDING COMMISSION SPECIFICATIONS. DOOR ASSEMBLY IS NOT PART OF THIS DRAWING AND SHALL BE IN ACCORDANCE WITH THE MANUFACTURER'S QUALITY ASSURANCE SPECIFICATIONS & TESTING REPORTS.
- CERTIFICATION OF THESE DOOR INSTALLATIONS SHALL BE CONSIDERED VOID IF ANY OF THE FOLLOWING APPLY: 1) THEY ARE INSTALLED WITHOUT A BUILDING PERMIT FROM THE APPLICABLE LOCAL BUILDING DEPARTMENT. 2) IF THEY ARE INSTALLED BY ANYONE OTHER THAN A LICENSED CONTRACTOR EXPERIENCED WITH DOOR INSTALLATIONS. 3) IF CHANGES HAVE OCCURRED TO THE PRODUCT'S CERTIFICATION ENTITY'S CERTIFICATE THAT CAUSE THESE INSTALLATIONS TO BE INCORRECT OR INCONSISTENT WITH WHAT HAS BEEN TESTED.
- THE LEAST DESIGN PRESSURE SPECIFIED EITHER IN THIS DRAWING OR IN THE PRODUCTS CERTIFICATION SHALL CONTROL FOR THE INSTALLED DOOR.
- THESE DRAWINGS CERTIFY THE DOOR INSTALLATION ONLY. WATER PROOFING OF THE INSTALLED DOORS IS NOT PART OF THIS INSTALLATION CERTIFICATION. THAT RESPONSIBILITY SHALL BE THAT OF THE MANUFACTURER &/OR INSTALLER.

ALTERNATE ANCHOR/SUBSTRATE EVALUATION NOTE:

ALL ALTERNATE ANCHORS IN THEIR SPECIFIED SUBSTRATES HAVE BEEN ANALYZED IN ACCORDANCE WITH THEIR APPLICABLE STANDARD(S) AND ARE FOUND TO BE EQUIVALENT TO OR STRONGER THAN THE ANCHOR(S) USED IN TESTING WITH THIS PRODUCT.

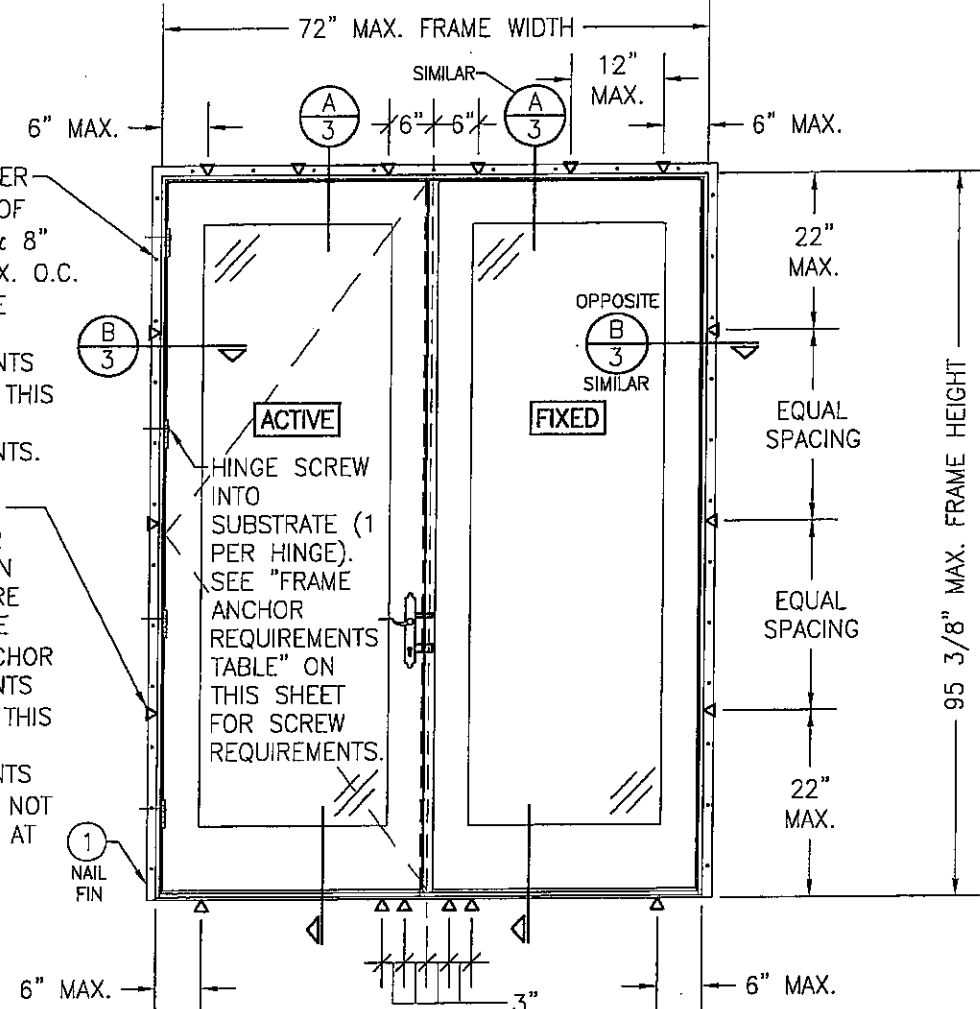


EXTERIOR ELEVATION:
DOUBLE DOOR

SCALE: 1/2" = 1'-0"

FIN FASTENER WITHIN 4" OF CORNERS & 8" TO 10" MAX. O.C. SEE "FRAME ANCHOR REQUIREMENTS TABLE" ON THIS SHEET FOR REQUIREMENTS.

FRAME/SILL SCREWS OR INSTALLATION CLIPS WHERE SHOWN. SEE "FRAME ANCHOR REQUIREMENTS TABLE" ON THIS SHEET FOR REQUIREMENTS (CLIPS ARE NOT APPLICABLE AT SILL).



EXTERIOR ELEVATION:
SINGLE DOOR WITH SINGLE FIXED PANEL

SCALE: 1/2" = 1'-0"

(DOOR MAY BE HINGED TO JAMB AS SHOWN OR HINGED TO ASTRAGAL; WHEN HINGED TO ASTRAGAL SEE SINGLE DOOR ELEVATION ON SHEET 2 FOR FRAME ANCHOR REQUIREMENTS AT LOCK SIDE)

HINGE REQUIREMENTS (ALL DOOR CONDITIONS)

FRAME HEIGHT	QUANTITY PER PANEL
OVER 82"	4
82" & LESS	3

ALLOWABLE DESIGN PRESSURE (ALL ELEVATIONS)

+/-50 PSF

- PRESSURE SHOWN IN THIS TABLE IS FOR INSTALLATION CONDITIONS ONLY. THE GOVERNING DESIGN PRESSURE ON THE WINDOWS SHALL BE THE LESSER OF THAT SHOWN IN THE INDIVIDUAL WINDOW'S STATE APPROVAL OR THAT SHOWN IN THIS TABLE.
- APPROVED FOR USE IN WIND ZONES 1, 2 & 3 (WIND SPEEDS 140 MPH & LESS)

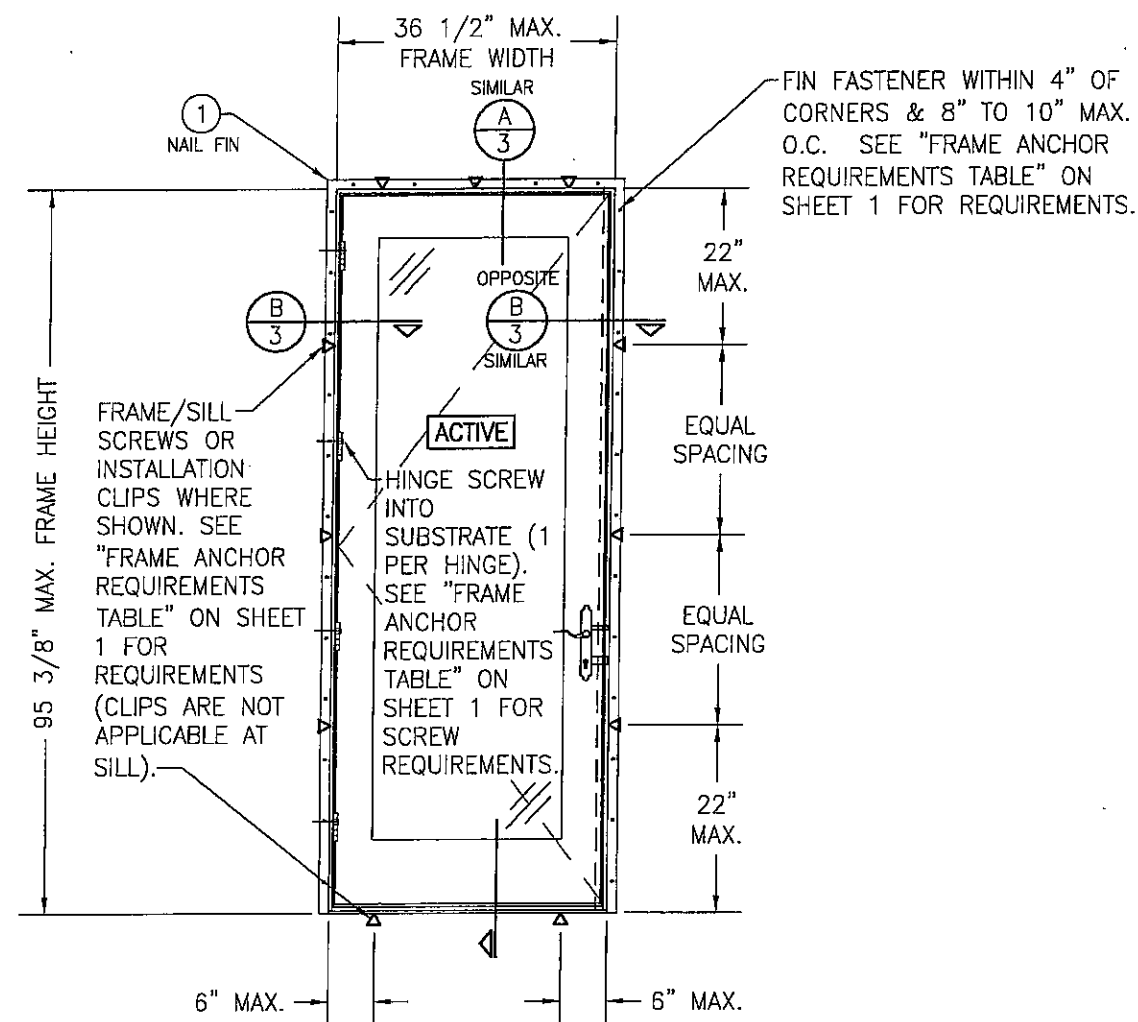
INSTALLATION EVALUATION IS BASED ON APPLICABLE ANCHOR STANDARDS AND/OR INFORMATION & RESULTS FROM APPLICABLE TEST REPORTS. THE FLORIDA BUILDING CODE VERSION CONSIDERED WITH THE EVALUATION WAS THAT IN FORCE AT THE TIME OF THE EVALUATION. IN THE EVENT OF CODE VERSION CHANGES/UPDATES OR IN THE EVENT THAT NEW OR ADDITIONAL TESTING IS COMPLETED ON THE REFERENCED PRODUCT, PRIOR TO STATING CODE COMPLIANCE WITH THE STATE, THE MANUFACTURER SHALL CONFIRM WITH THE INSTALLATION EVALUATION ENGINEER OF RECORD THAT THE INSTALLATIONS SPECIFIED HERE-IN ARE CURRENT WITH THE THEN CURRENT TESTING, CODE AND APPLICABLE STANDARDS.

FRAME ANCHOR REQUIREMENTS TABLE

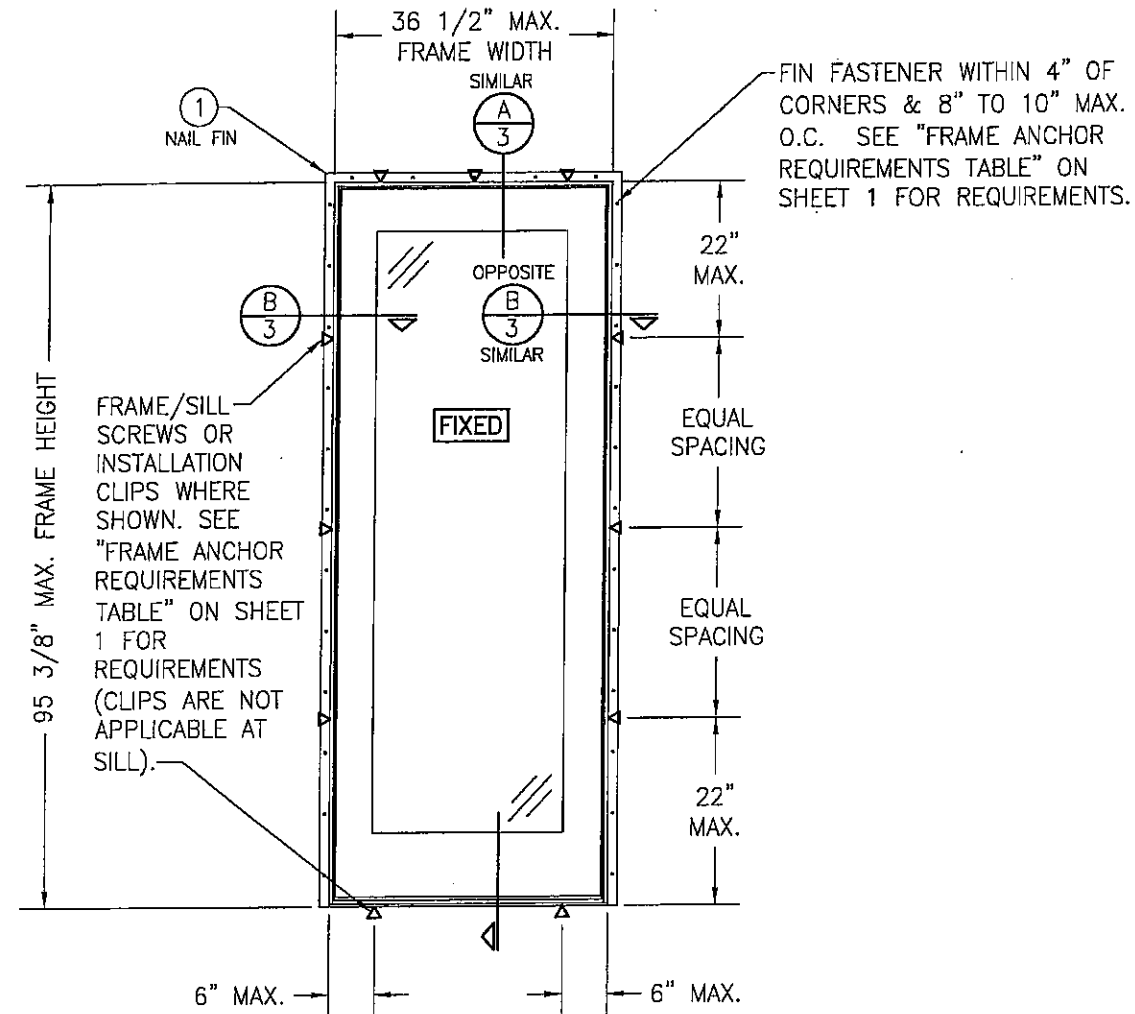
OPENING TYPE (SUBSTRATE)	FRAME/HINGE/CLIP/NAIL FIN TO OPENING FASTENER TYPE	MINIMUM EMBED	MINIMUM EDGE DIST.
FRAME, SILL & HINGE SCREWS			
MIN. 2X4 WOOD FRAME OR BUCK (MIN. GR. 3 & G=0.55)	NO. 10 SMS OR WOOD SCREW	1 1/4"	3/4"
MIN. 1/8" THK A36 STEEL	NO. 10 GR. 5 SELF TAP/DRILL SCREW	FULL	1/2"
MIN. 1/8" THK 6063-T5 ALUM.	NO. 10 GR. 5 SELF TAP/DRILL SCREW	FULL	1/2"
(1) C-90 CMU/2500 PSI CONCRETE	(2) 1/4" CONCRETE SCREW	1 1/4"	2"
INSTALLATION CLIP SCREWS			
MIN. 2X4 WOOD FRAME OR BUCK (MIN. GR. 3 & G=0.55)	NO. 8 SMS OR WOOD SCREW	1 3/8"	1/2"
MIN. 1/8" THK A36 STEEL	NO. 8 GR. 5 SELF TAP/DRILL SCREW	FULL	1/2"
MIN. 1/8" THK 6063-T5 ALUM.	NO. 8 GR. 5 SELF TAP/DRILL SCREW	FULL	1/2"
(3) NAILING FIN FASTENERS			
MIN. 2X4 WOOD FRAME OR BUCK (MIN. GR. 3 & G=0.55)	NO. 8 X 1 1/2" SMS	1 3/8"	1/2"
MIN. 2X4 WOOD FRAME OR BUCK (MIN. GR. 3 & G=0.55)	1 3/4" X 11 GA. ROOFING NAIL	1 1/2"	1/2"
MIN. 1/8" THK A36 STEEL	NO. 8 GR. 5 SELF TAP/DRILL SCREW	FULL	1/2"
MIN. 1/8" THK 6063-T5 ALUM.	NO. 8 GR. 5 SELF TAP/DRILL SCREW	FULL	1/2"

- CONCRETE SCREWS SHALL ONLY BE APPLICABLE AT THE SILL.
- CONCRETE SCREWS SHALL BE ELCO OR ITW RAMSET/RED HEAD TAPCONS, HILTI KWIK-CON II OR POWERS RAWL TAPPER (HARDENED STEEL OR S.S.).
- WHEN SCREWS ARE USED WITH THE NAIL FIN, THEY MUST BE A WAFFLE HEAD SCREW OR HAVE A FLAT WASHER AT THE SCREW HEAD.

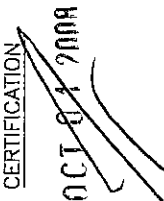
DRAWN BY: S.T.R.		CHECKED BY: W.W.S.	
PLOT: 1-24		DATE: 09/07/08	
DATE	BY	REVISION DESCRIPTION	NO.
06/23/08	WRM	UPDATE TO PRESENT STANDARDS	A1
<p>DRAWING TITLE: Pinnacle Aluminum Clad Wood Impact Out-Swing Doors</p> <p>MANUFACTURER: WINDSOR WINDOWS & DOORS 900 S. 19TH STREET WEST DES MOINES, IA 50265 800-218-6186</p> <p>CONSULTANTS: W. W. SCHAEFER ENGINEERING & CONSULTING, P.A. 8895 N. MILITARY TRAIL, SUITE C-204 PALM BEACH GARDENS, FL 33410 PHONE: 561-775-4902 FAX: 561-775-4903</p> <p>CERTIFICATION: OCT 1 2008 WARREN W. SCHAEFER, P.E. P.E. NO. 44135</p>			
DRAWING NO. 1373		REV. A	
SHEET NO. 1		OF 3	



EXTERIOR ELEVATION:
SINGLE DOOR
SCALE: 1/2" = 1'-0"



EXTERIOR ELEVATION:
SINGLE FIXED PANEL
SCALE: 1/2" = 1'-0"

DRAWN BY: S.T.R.		CHECKED BY: W.W.S.	
PLOT: 1=24		DATE: 08/07/08	
NO.	REVISION	DESCRIPTION	DATE
DRAWING TITLE PINNACLE ALUMINUM CLAD WOOD IMPACT OUT-SWING DOORS			
CONSULTANTS W. W. SCHAEFER ENGINEERING & CONSULTING, P.A. 8895 N. MILITARY TRAIL, SUITE C-204 PALM BEACH GARDENS, FL 33410 PHONE: 561-775-4902 FAX: 561-775-4903		MANUFACTURER WINDSOR WINDOWS & DOORS 900 S. 19TH STREET WEST DES MOINES, IA 50265 800-218-6186	
CERTIFICATION  WARREN W. SCHAEFER, P.E. P.E. NO. 44135			
DRAWING NO. 1373		REV. A	
SHEET NO. 2		OF 3	