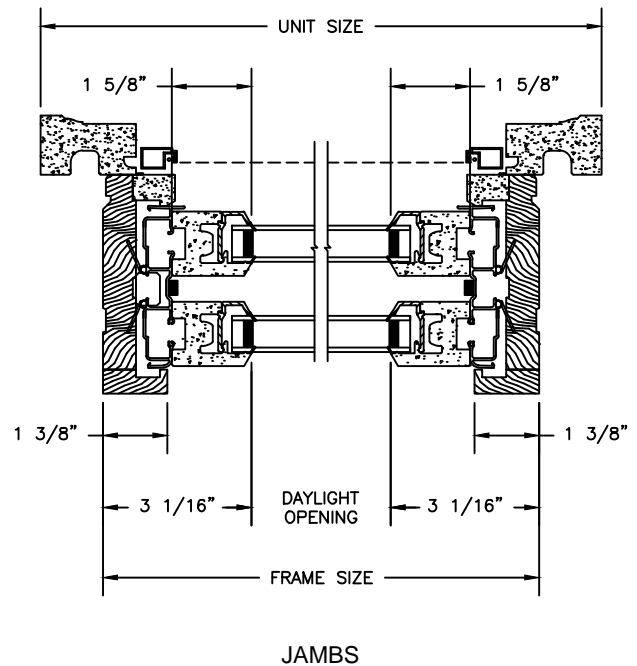
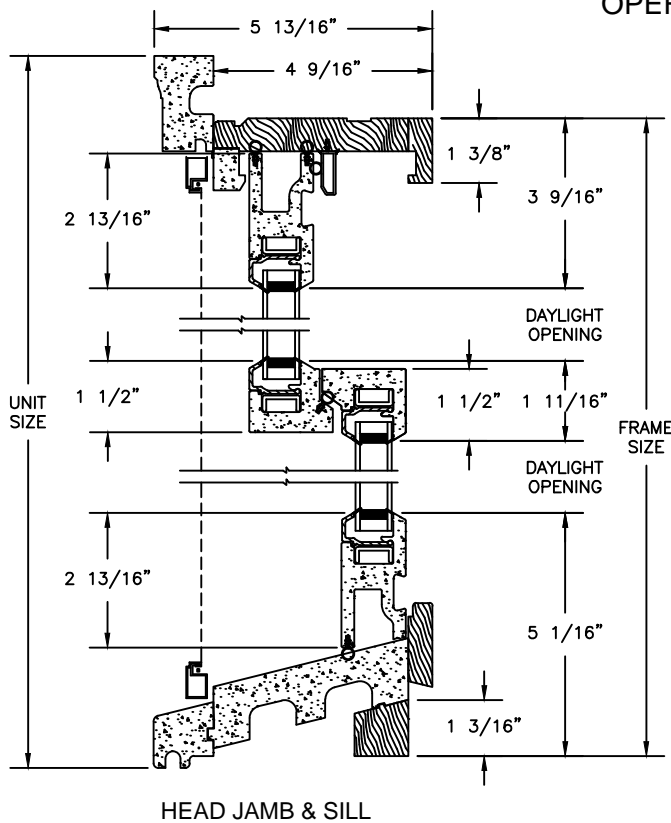


## LEGEND DOUBLE HUNG

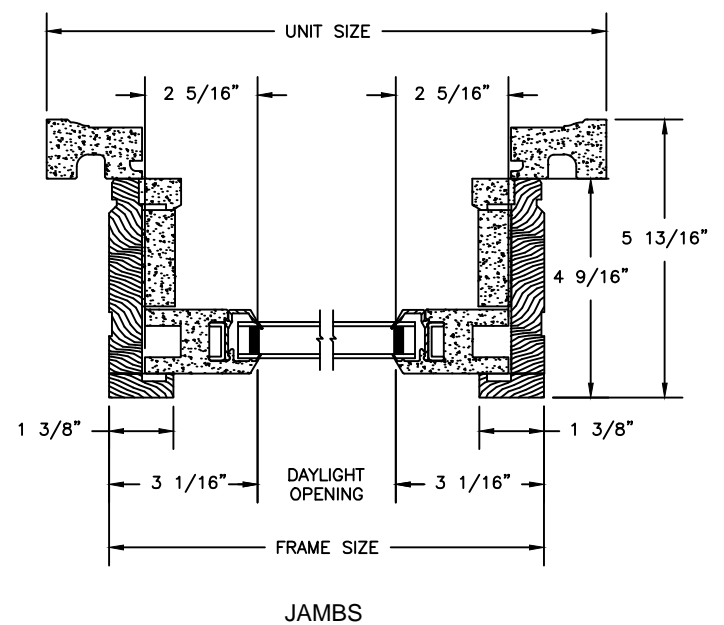
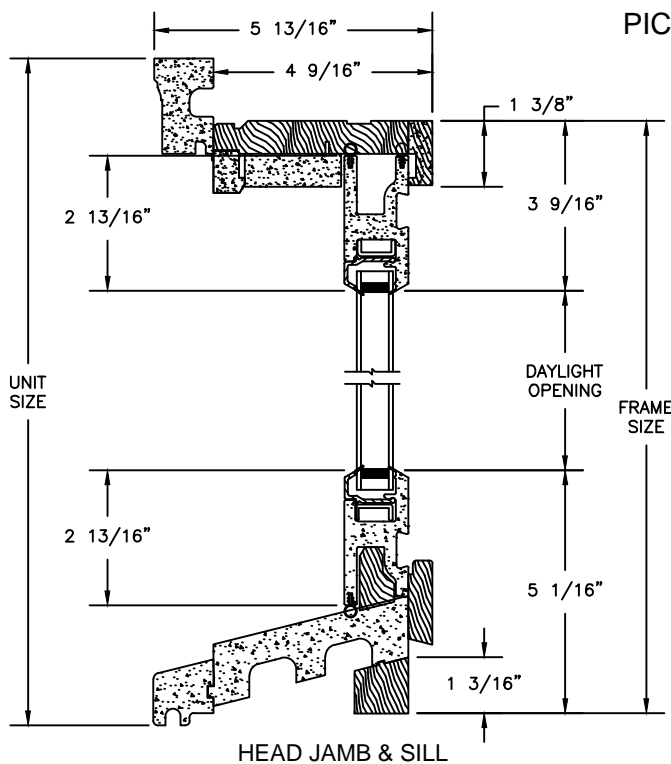
## SECTION DETAILS

SCALE: 3" = 1'-0"

## OPERATING



PICTURE



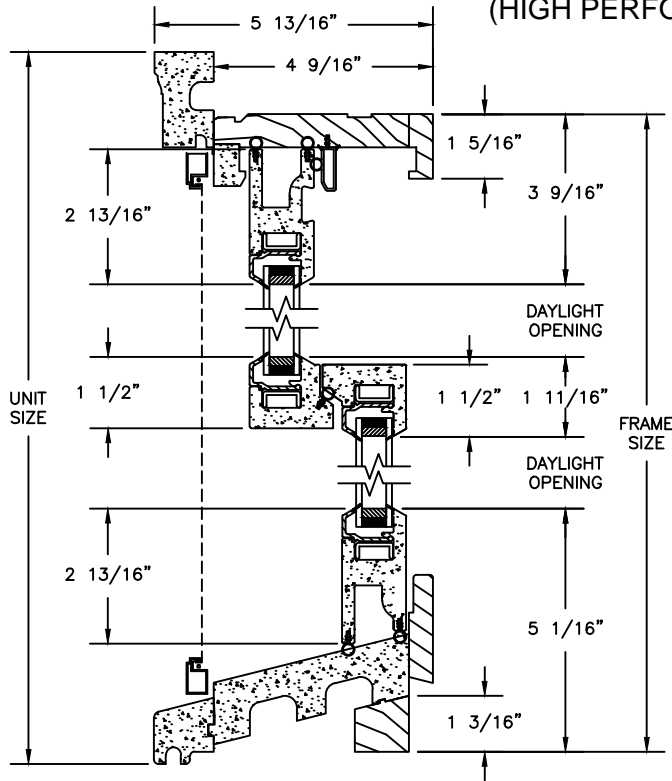
# Legend Series

## LEGEND DOUBLE HUNG

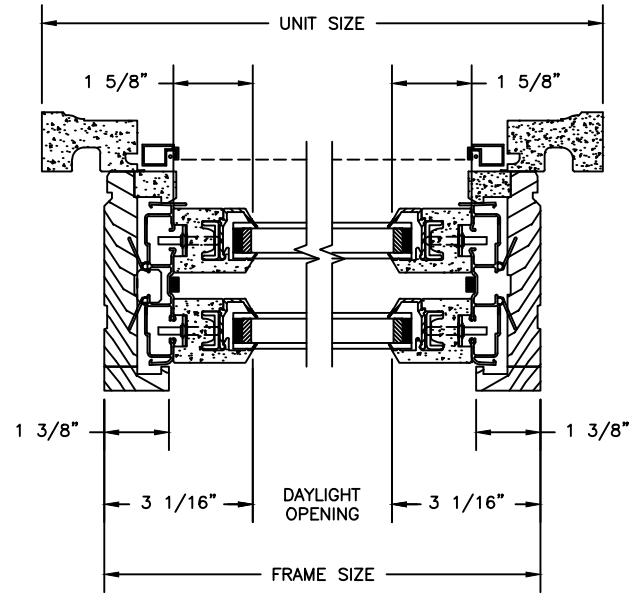
### SECTION DETAILS

SCALE: 3" = 1'-0"

#### OPERATING (HIGH PERFORMANCE OPTION)

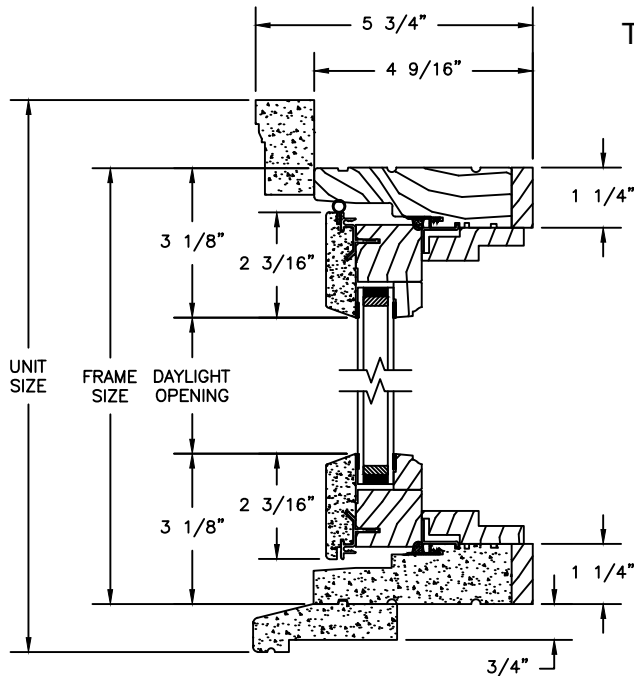


EZ TILT HEAD JAMB & SILL

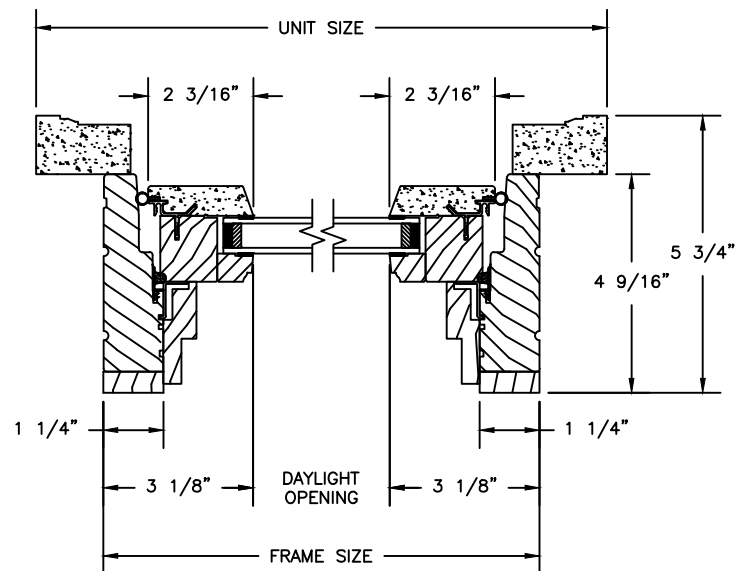


JAMBS

#### TRANSOM



HEAD JAMB & SILL



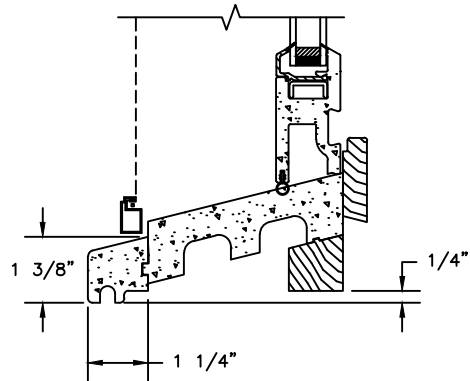
JAMBS

# Legend Series

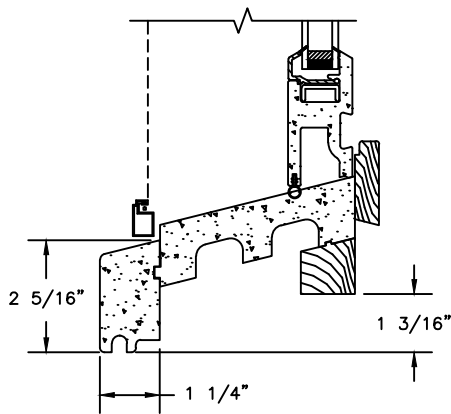
## LEGEND DOUBLE HUNG

SECTION DETAILS: CASING OPTIONS

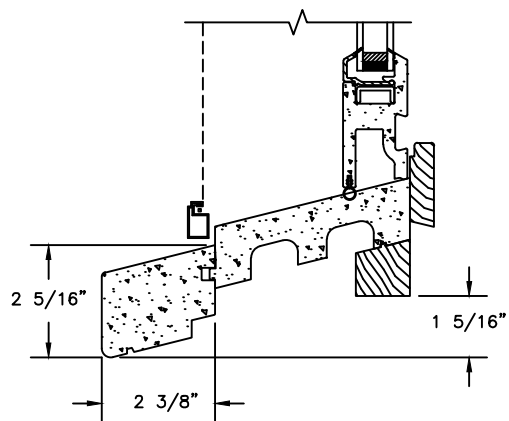
SCALE: 3" = 1'-0"



STANDARD SILLNOSE



BULLNOSE SILLNOSE



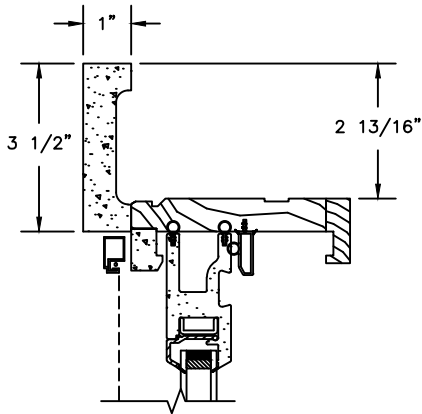
BELLY SILLNOSE

# Legend Series

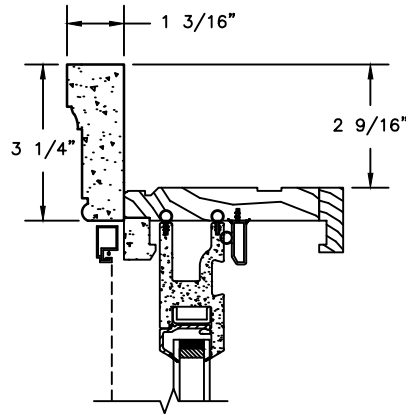
## LEGEND DOUBLE HUNG

### SECTION DETAILS: CASING OPTIONS

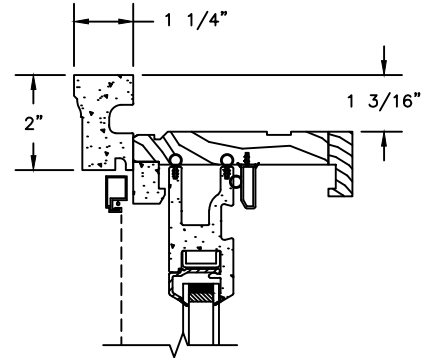
SCALE: 3" = 1'-0"



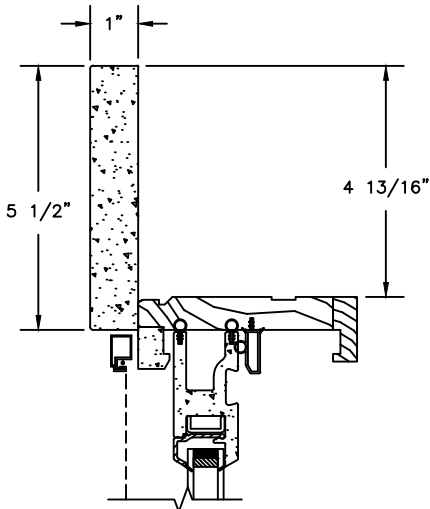
HEAD JAMB WITH  
3 1/2" FLAT CASING



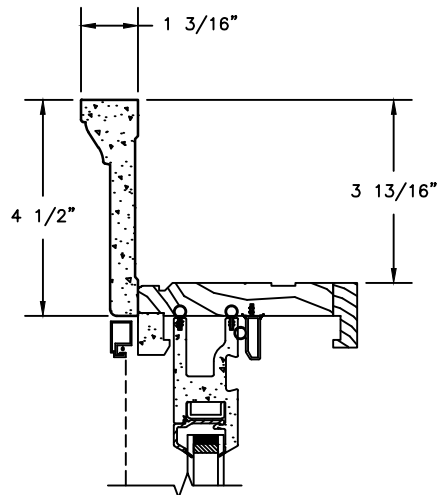
HEAD JAMB WITH  
WILLIAMSBURG BRICKMOULD



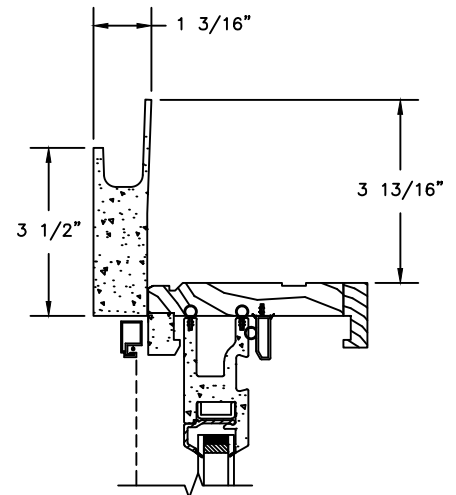
HEAD JAMB WITH  
STANDARD 180 BRICKMOULD



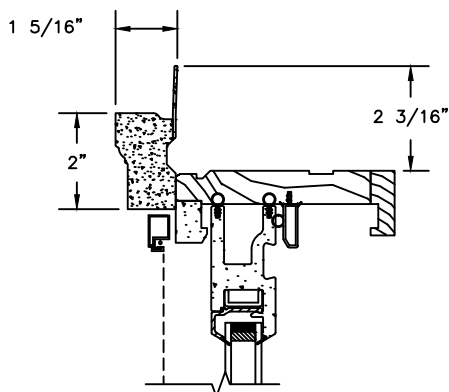
HEAD JAMB WITH  
5 1/2" FLAT CASING



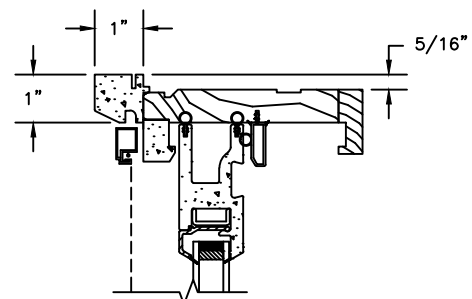
HEAD JAMB WITH  
4 1/2" BACKBAND



HEAD JAMB WITH  
3 1/2" FLAT CASING  
WITH J-CHANNEL



HEAD JAMB WITH  
180 FLANGED BRICKMOULD



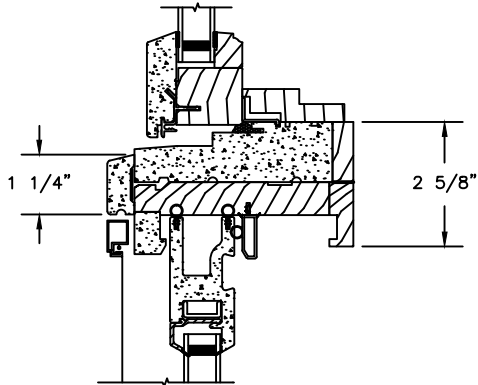
HEAD JAMB WITH  
SLIMLINE

# Legend Series

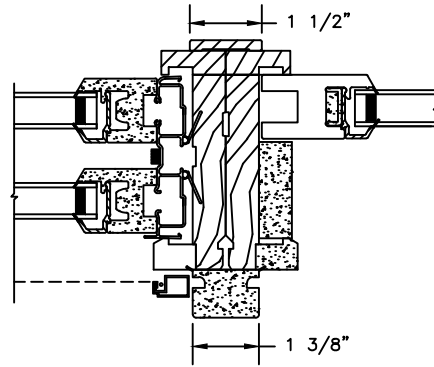
## LEGEND DOUBLE HUNG

SECTION DETAILS : MULLIONS

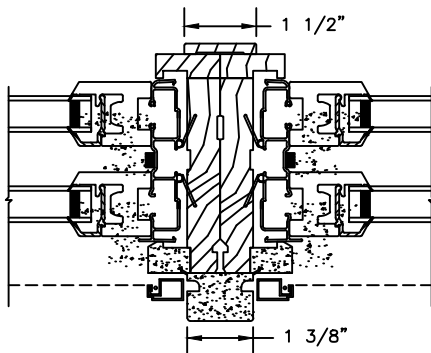
SCALE: 3" = 1'-0"



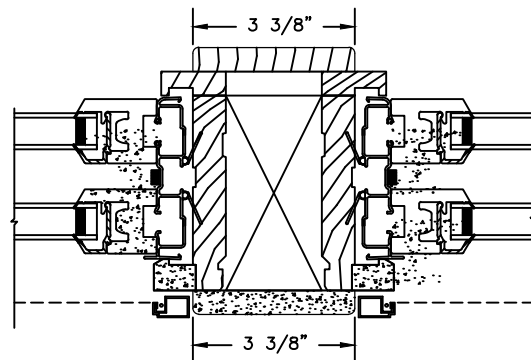
HORIZONTAL MULLION  
TRANSOM/OPERATOR



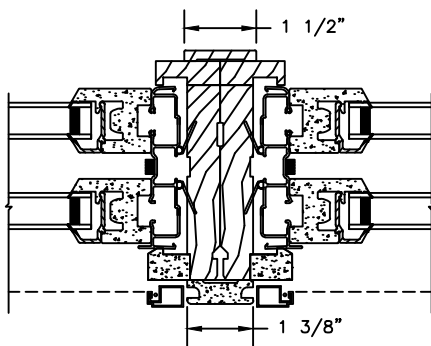
VERTICAL MULLION  
OPERATOR/PICTURE



VERTICAL MULLION  
OPERATOR/OPERATOR



VERTICAL MULLION  
OPERATOR WITH 2" SPREAD MULL



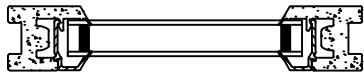
SLIMLINE VERTICAL MULLION  
OPERATOR/OPERATOR

# Legend Series

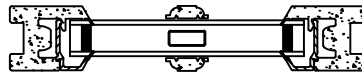
## LEGEND DOUBLE HUNG

SECTION DETAILS : DIVIDED LITE OPTIONS

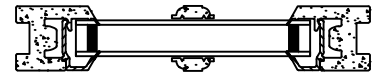
SCALE: 3" = 1'-0"



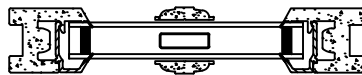
INSULATING GLASS



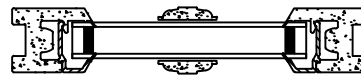
7/8" WDL  
WITH INNERBAR



7/8" WDL  
WITHOUT INNERBAR



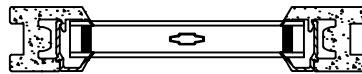
1 1/4" WDL  
WITH INNERBAR



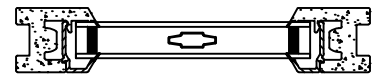
1 1/4" WDL  
WITHOUT INNER BAR



13/16" INNERGRILLE



3/4" PROFILED INNERGRILLE



1" PROFILED INNERGRILLE



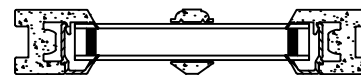
2" SIMULATED CHECK RAIL  
WITH INNERBAR



2" SIMULATED CHECK RAIL  
WITHOUT INNERBAR



7/8" PUTTY GLAZE  
WITH INNERBAR



7/8" PUTTY GLAZE  
WITHOUT INNERBAR



5/8" PUTTY GLAZE  
WITH INNERBAR



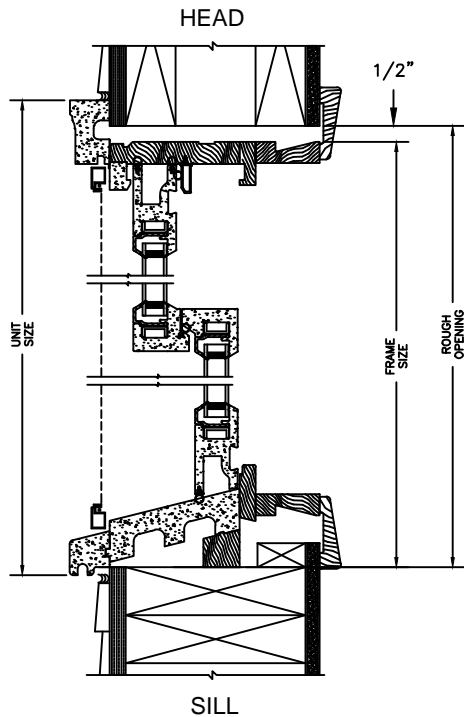
5/8" PUTTY GLAZE  
WITHOUT INNERBAR

# Legend Series

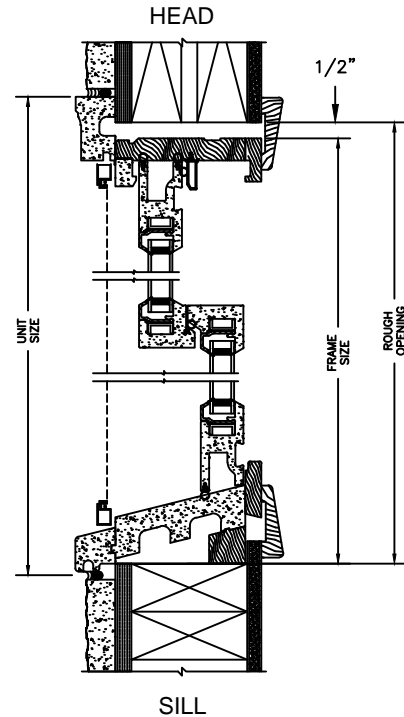
## LEGEND DOUBLE HUNG

### SECTION DETAILS : CONSTRUCTION

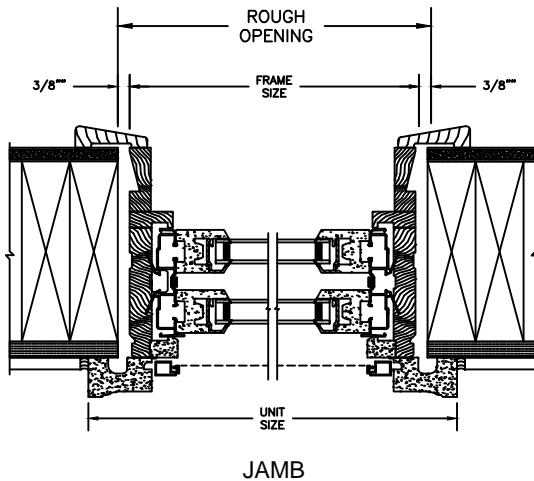
SCALE: 2" = 1'-0"



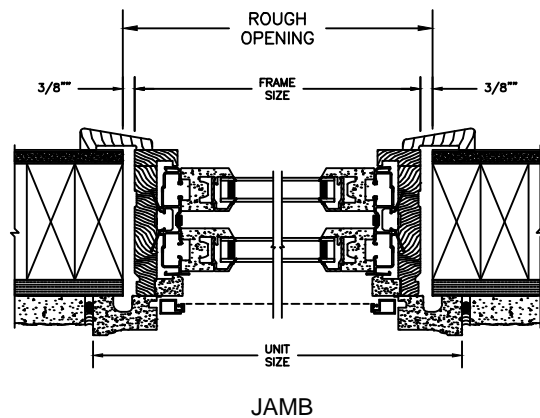
2 X 6 FRAME WITH SIDING



2 X 4 FRAME WITH STUCCO



2 X 6 FRAME WITH SIDING



2 X 4 FRAME WITH STUCCO

#### NOTE :

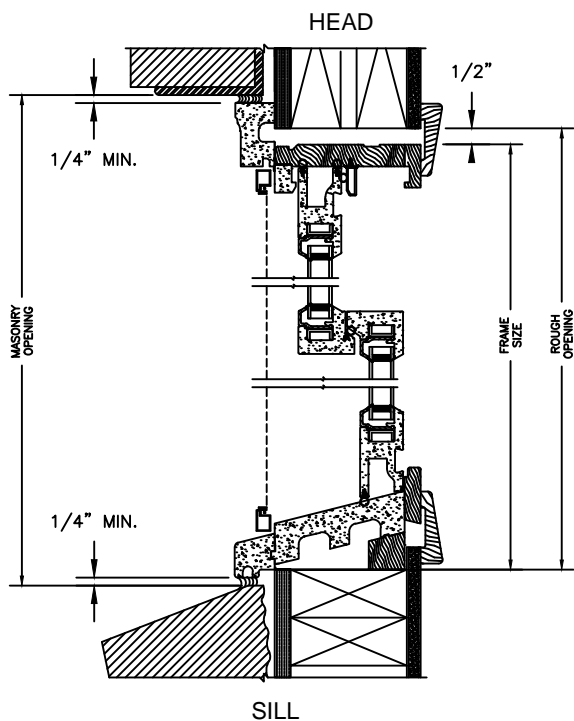
THE ABOVE WALL SECTIONS REPRESENT TYPICAL WALL CONDITIONS, THESE DETAILS ARE NOT INTENDED AS INSTALLATION INSTRUCTIONS. PLEASE REFER TO THE INSTALLATION INSTRUCTIONS PROVIDED WITH THE PURCHASED UNITS.

# Legend Series

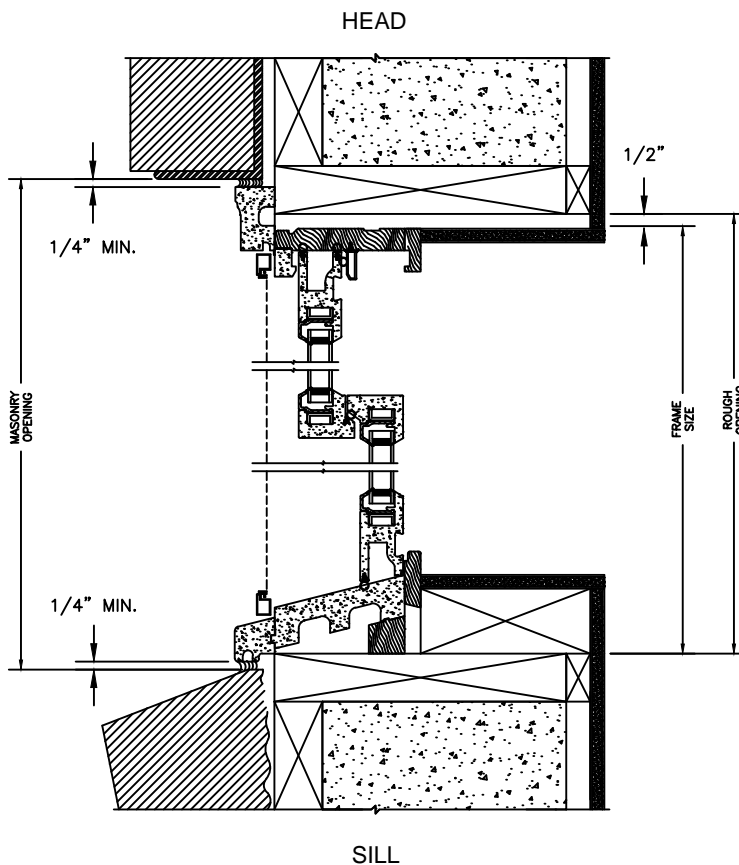
## LEGEND DOUBLE HUNG

SECTION DETAILS : CONSTRUCTION

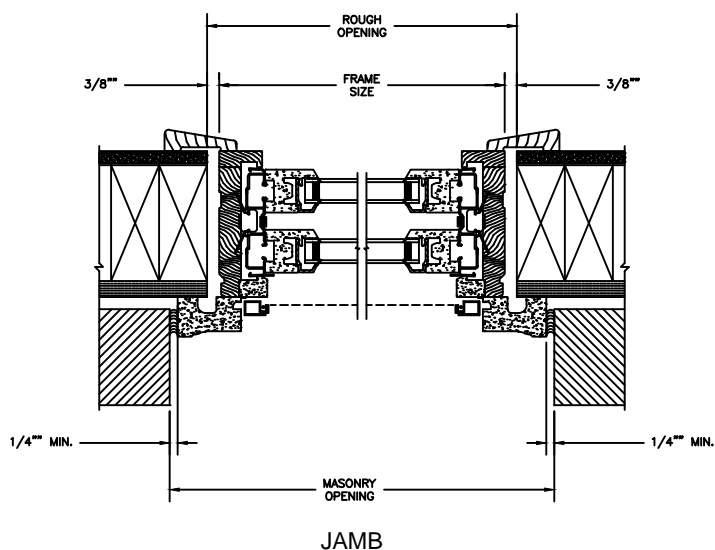
SCALE: 2" = 1'-0"



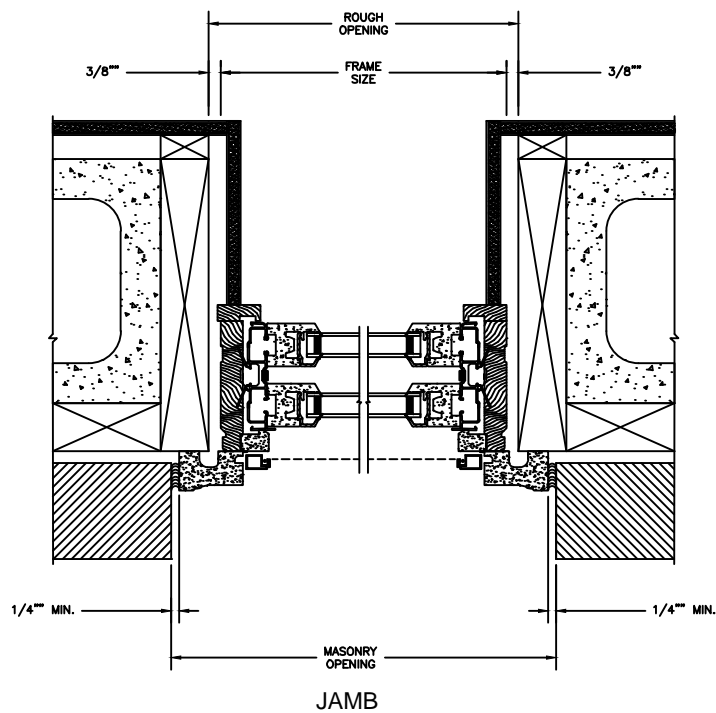
2 X 4 FRAME WITH BRICK VENEER



8" CONCRETE BLOCK WALL WITH BRICK VENEER



JAMB  
2 X 4 FRAME WITH BRICK VENEER



JAMB  
8" CONCRETE BLOCK WALL WITH BRICK VENEER

NOTE :

THE ABOVE WALL SECTIONS REPRESENT TYPICAL WALL CONDITIONS, THESE DETAILS ARE NOT INTENDED AS INSTALLATION INSTRUCTIONS.

PLEASE REFER TO THE INSTALLATION INSTRUCTIONS PROVIDED WITH THE PURCHASED UNITS.

# Legend Series

## LEGEND DOUBLE HUNG

SECTION DETAILS : 30 / 45 DEGREE BAY  
NOT TO SCALE

