

# Windsor Series Sash Conversion

## Sash Measurement Guidelines

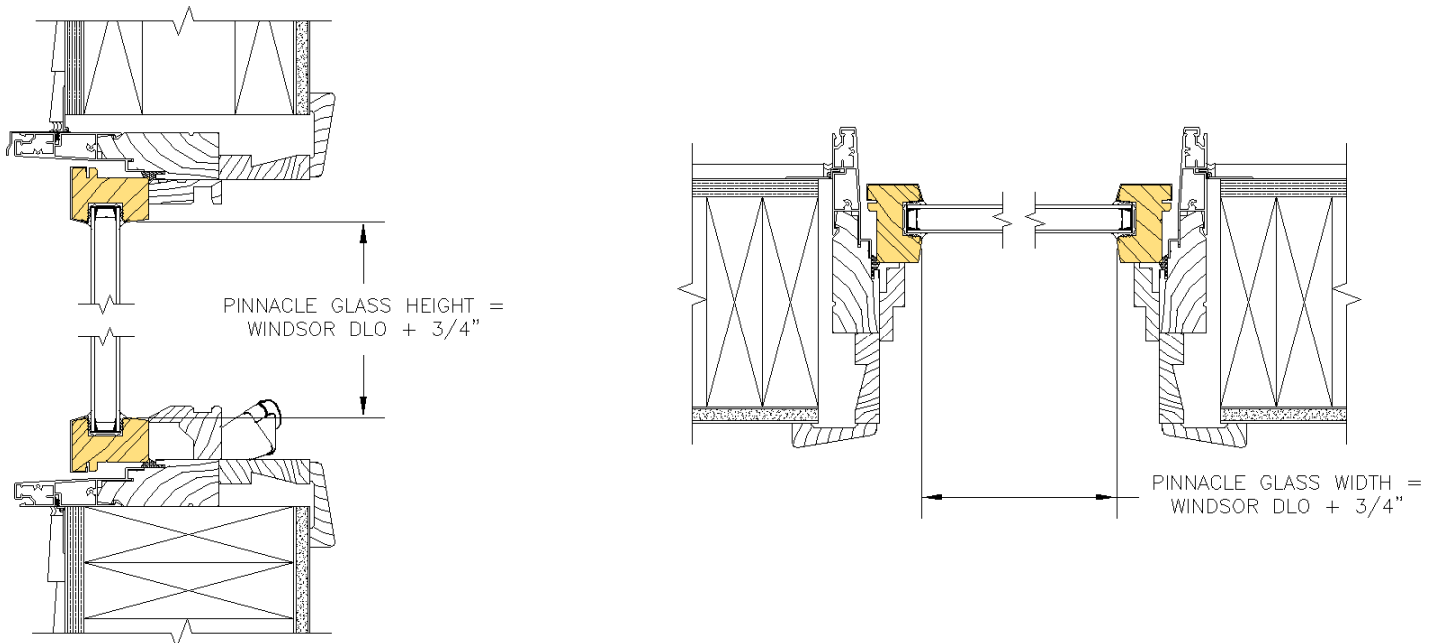
### Windsor Series to Pinnacle Series

**Purpose:** To determine the correct Pinnacle sash size to fit within a Windsor Series frame.

**Notes:**

1. When measuring the Day Lite Opening (DLO) of the Windsor Series Sash, do not measure from the rubber boot surrounding the glass. Measure from the inside edge of the wood to ensure the proper size is obtained.
2. Select the correct unit type below and measure the sash DLO width and height. Convert the DLO measurement to the correct Pinnacle glass size using the formulas given below.

### Windsor Series Operating/Fixed Casement & Awning (All Years) Clad Double Hung Transom (3/93 to 8/97)



**Note:** Below are the formulas to convert the size of the sash to the correct Pinnacle glass size. The same formula is used for both the width and height.

**Outside** of Sash Measurement: Pinnacle Glass Size = Sash Size - 2 3/16"

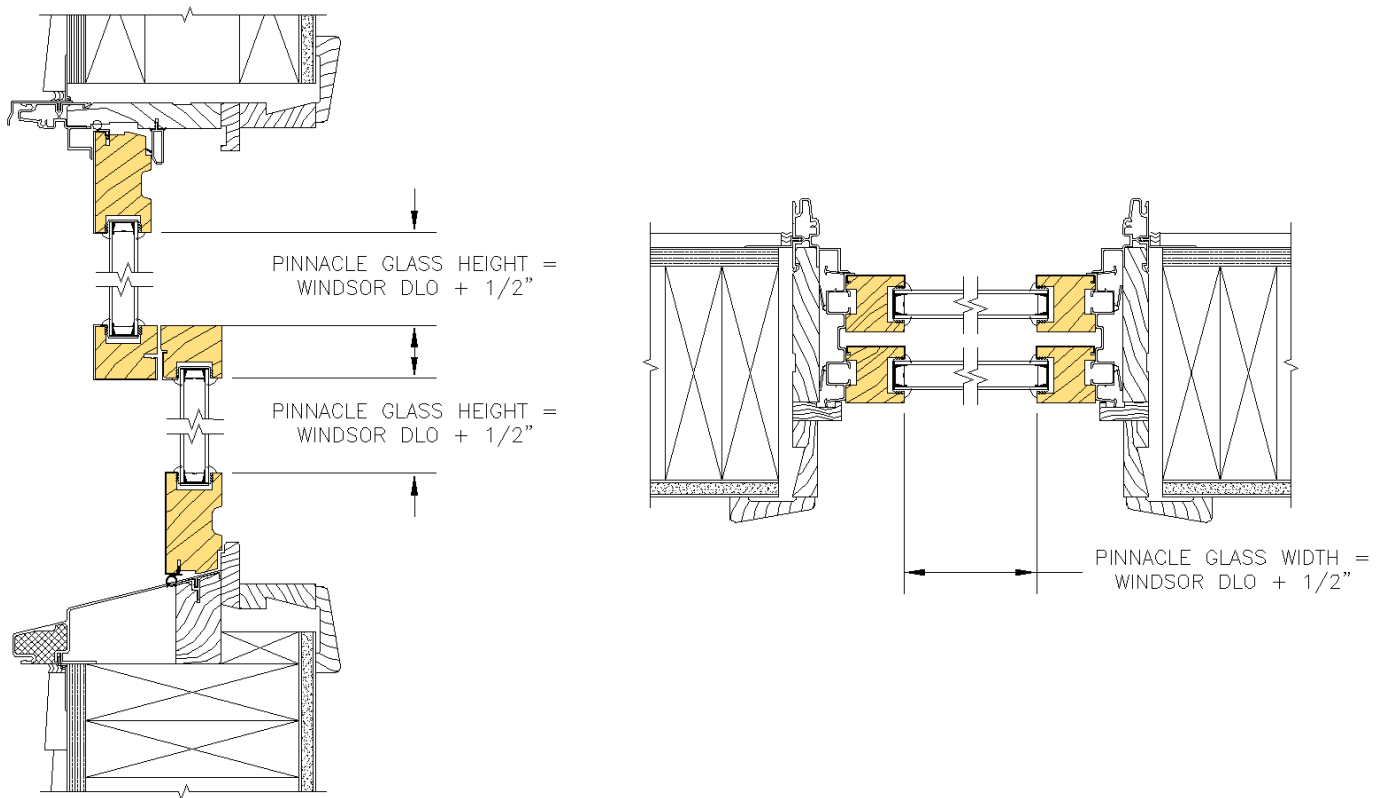
**Inside** of Sash Measurement: Pinnacle Glass Size = Sash Size - 1 5/8"

# Windsor Series Sash Conversion

## Sash Measurement Guidelines

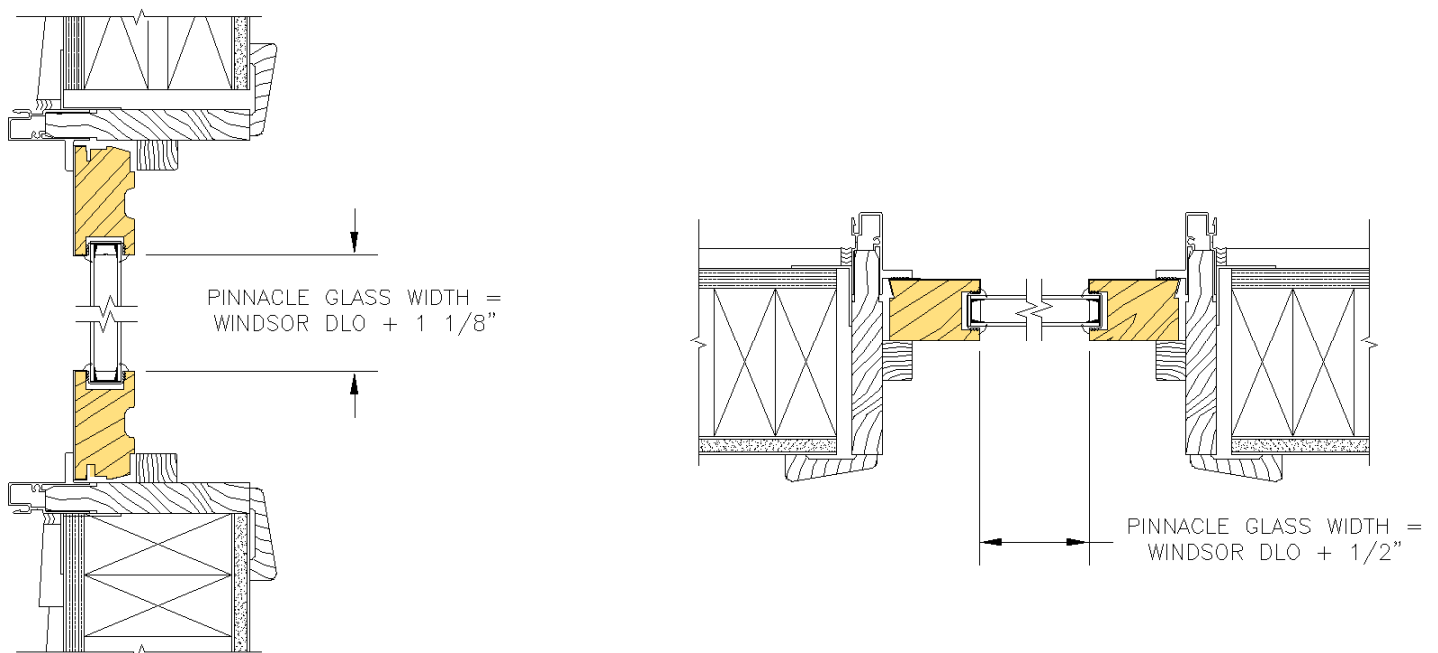
### Windsor Series to Pinnacle Series

#### Windsor Series Operating Double Hung



#### Windsor Series Primed Double Hung Transom (All Years)

#### Clad Double Hung Transom (9/97 to 6/01)



# Windsor Series Sash Conversion

## Sash Measurement Guidelines

### Windsor Series to Pinnacle Series

#### Windsor Series Double Hung Picture (All Years)

