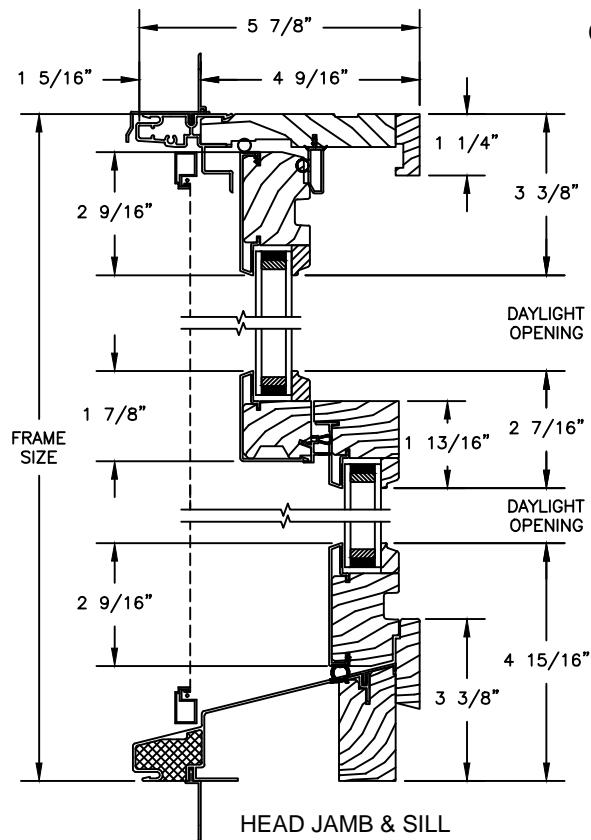


# Pinnacle Series

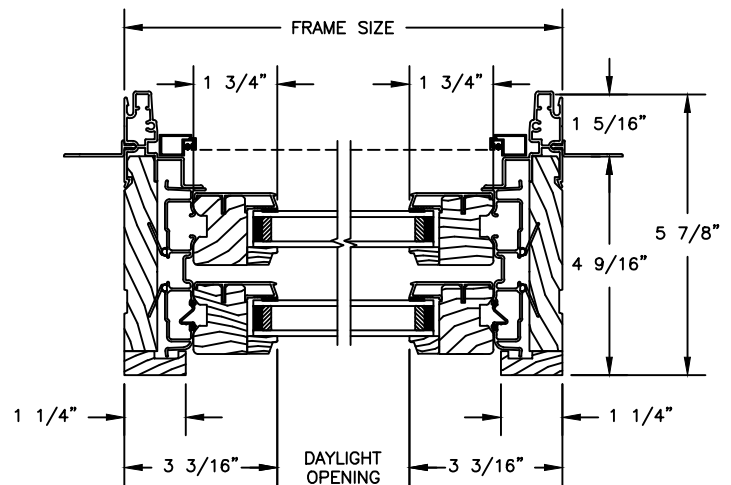
## CLAD DOUBLE HUNG

SECTION DETAILS : OPERATING / PICTURE

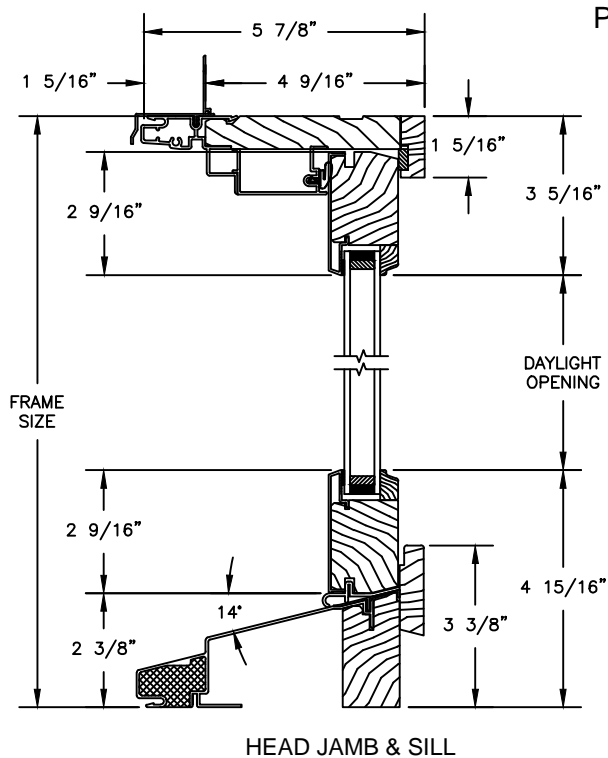
SCALE: 3" = 1'-0"



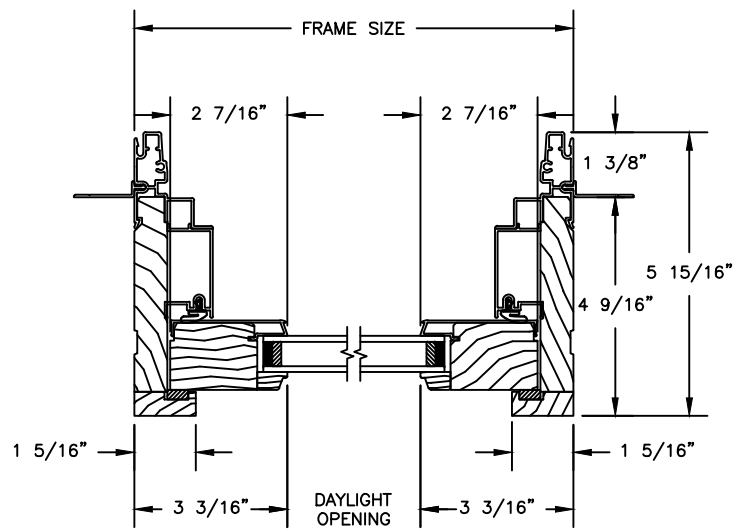
OPERATING



JAMBS



PICTURE



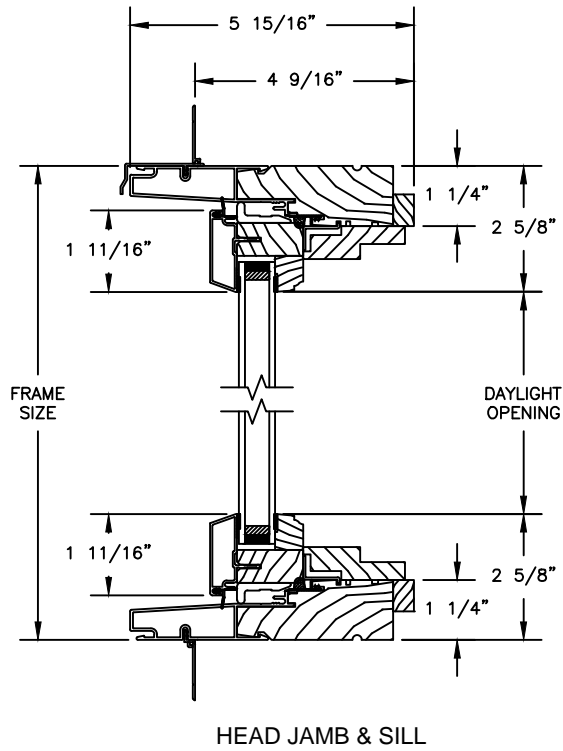
JAMBS

# Pinnacle Series

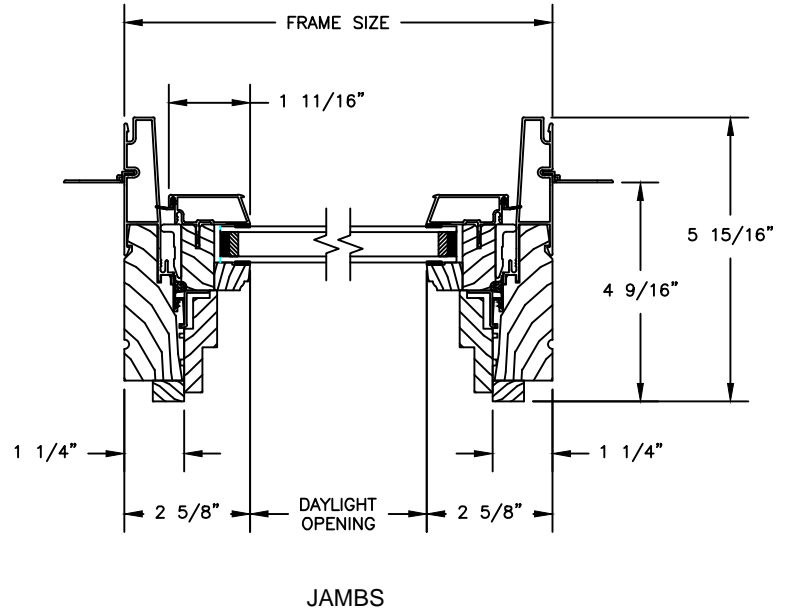
## CLAD DOUBLE HUNG

SECTION DETAILS : TRANSOM

SCALE: 3" = 1'-0"



TRANSOM

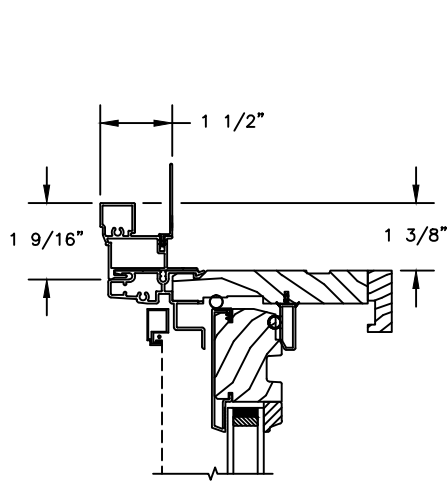


# Pinnacle Series

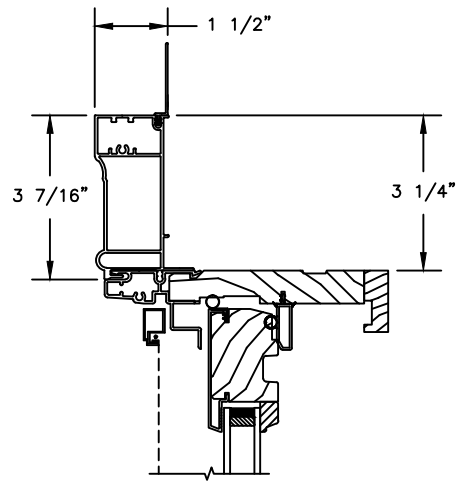
## CLAD DOUBLE HUNG

SECTION DETAILS : CASING OPTIONS

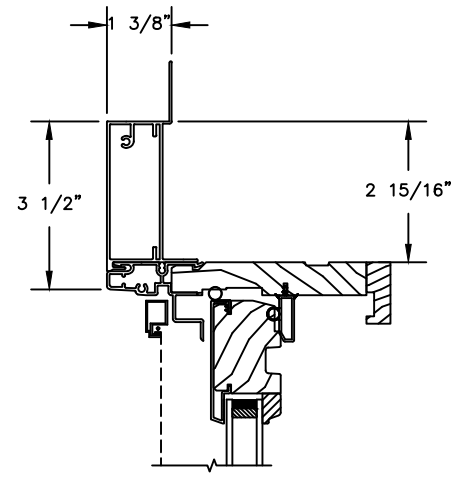
SCALE: 3" = 1'-0"



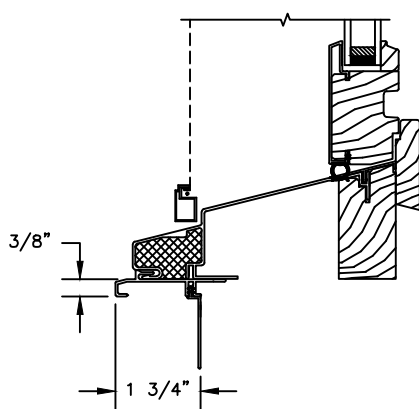
HEAD JAMB WITH  
CLAD BRICKMOULD CASING



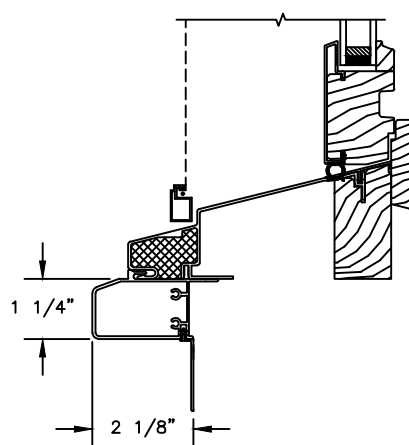
HEAD JAMB WITH  
CLAD WILLIAMSBURG CASING



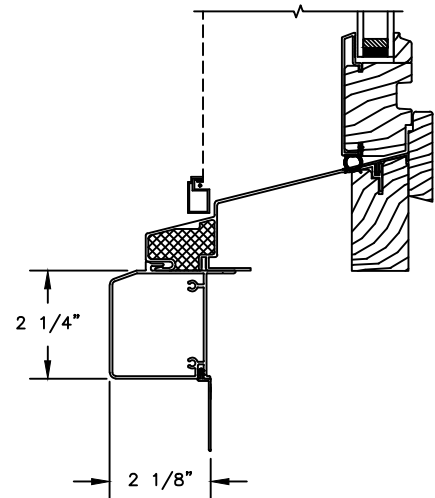
HEAD JAMB WITH  
3 1/2" CLAD FLAT CASING



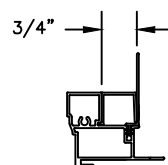
SILL WITH  
3/8" CLAD SUBSILL



SILL WITH  
1 1/4" CLAD SUBSILL



SILL WITH  
2 1/4" CLAD SUBSILL



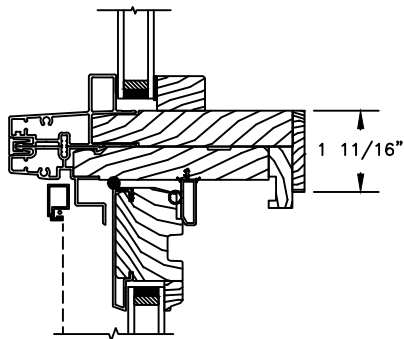
CLAD BRICKMOULD CASING  
WITH OPTIONAL J-CHANNEL COVER

# Pinnacle Series

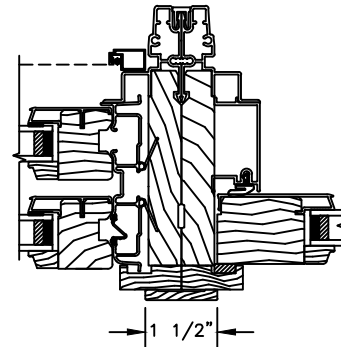
## CLAD DOUBLE HUNG

### SECTION DETAILS : MULLIONS

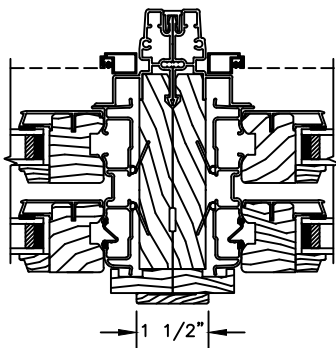
SCALE: 3" = 1'-0"



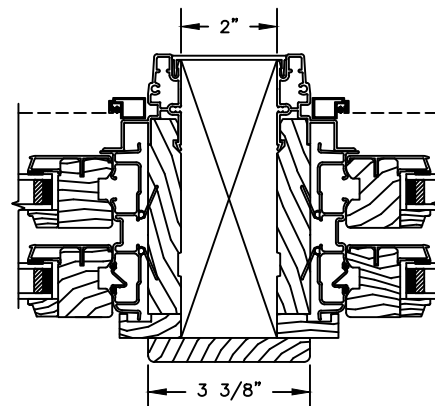
HORIZONTAL MULLION  
RADIUS/OPERATOR



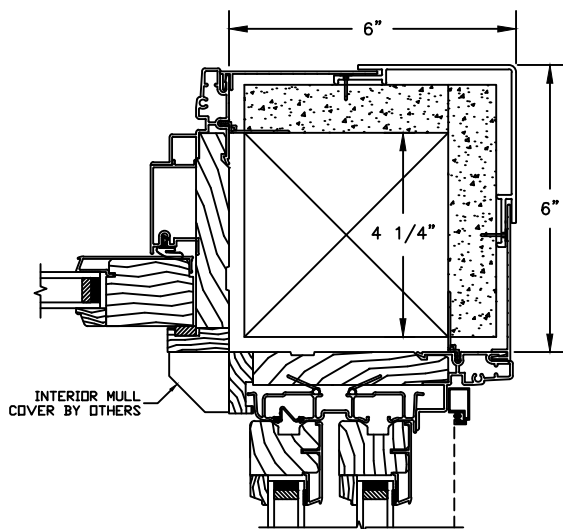
VERTICAL MULLION  
OPERATOR/PICTURE



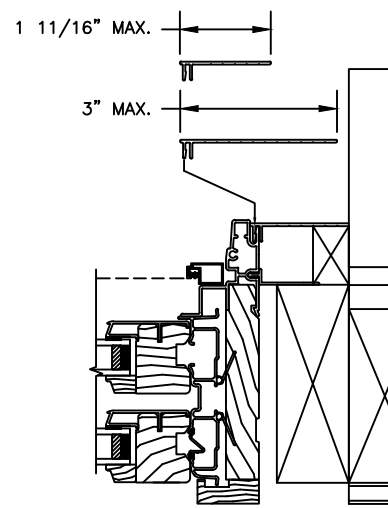
VERTICAL MULLION  
OPERATOR/OPERATOR



VERTICAL MULLION WITH  
2" SPREAD MULL  
ADDITIONAL WIDTHS INCLUDE:  
2 1/2", 4" & 6"



90° MULLION  
PICTURE/OPERATOR  
(ONLY USED WITH 4 9/16" JAMB & 3 1/4"  
FRAME EXPANDER)



NOTE :  
FOR INFORMATION ON STRUCTURAL MULLIONS REFER TO  
THE PRODUCT PERFORMANCE AND INFORMATION SECTION.



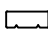
# Pinnacle Series

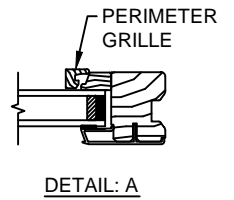
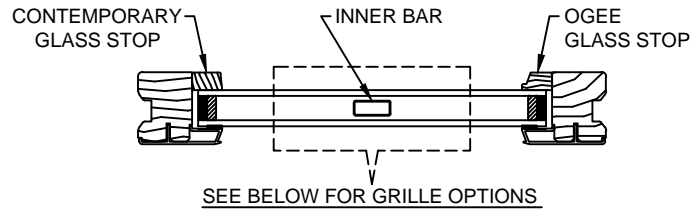
## CLAD DOUBLE HUNG












SECTION DETAILS : DIVIDED LITE OPTIONS

SCALE: 3" = 1'-0"

### AVAILABLE STYLES

-  - PUTTY
-  - OGEE
-  - CONTEMPORARY



	5/8" WDL WITH INNER BAR	7/8" WDL WITH INNERBAR	1 1/4" WDL WITH INNERBAR	2" WDL WITH INNERBAR
STANDARD INSULATING GLASS				
13/16" INNERGRILLE				
3/4" PROFILED INNERGRILLE				
1" PROFILED INNERGRILLE				
7/8" STICK & PERIMETER GRILLE				
1 1/4" STICK & PERIMETER GRILLE				

### NOTE:

\* ALL WDL OPTIONS CAN BE ORDERED WITH OR WITHOUT INNER BAR

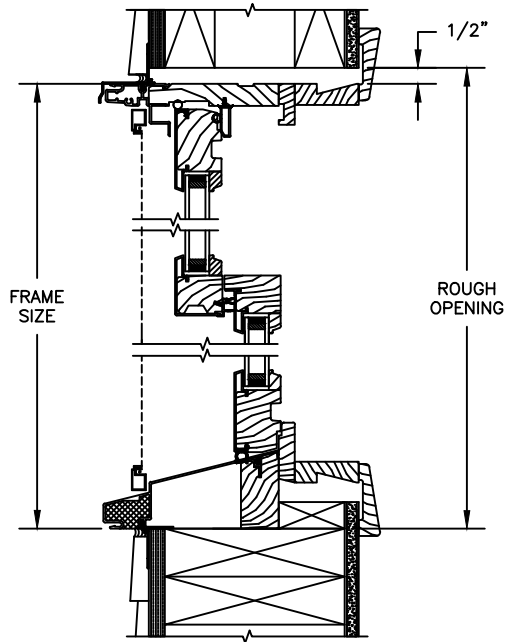
\* PERIMETER GRILLES ONLY AVAILABLE IN THE 7/8" AND 1 1/4" OGEE STYLE GLASS STOP (SEE DETAIL: A)

# Pinnacle Series

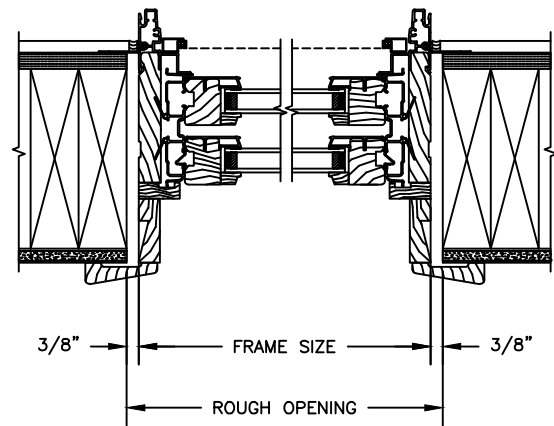
## CLAD DOUBLE HUNG

SECTION DETAILS : CONSTRUCTION

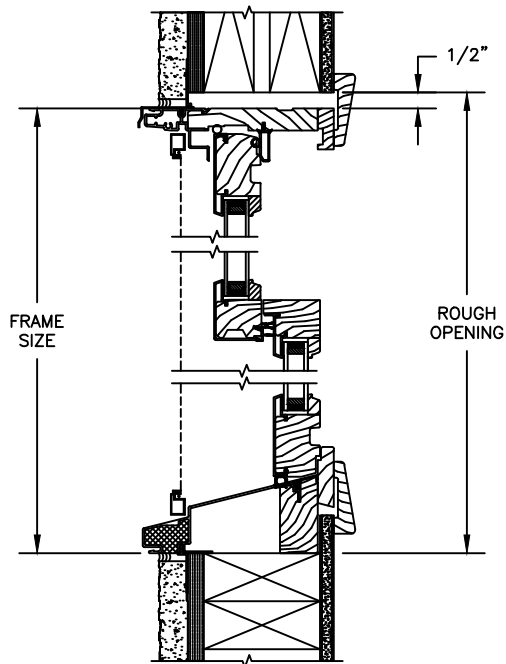
SCALE: 2" = 1'-0"



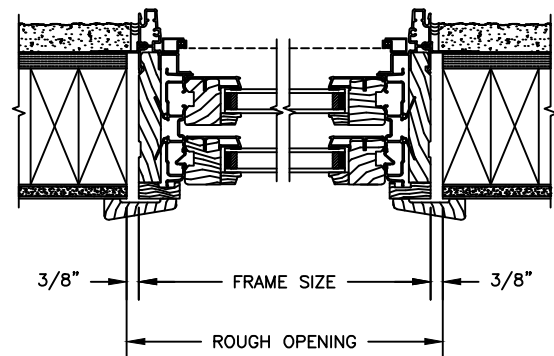
HEAD JAMB & SILL  
2 X 6 FRAME WITH SIDING



HEAD JAMB & SILL  
2 X 6 FRAME WITH SIDING



HEAD JAMB & SILL  
2 X 4 FRAME WITH STUCCO



JAMBS  
2 X 4 FRAME WITH STUCCO

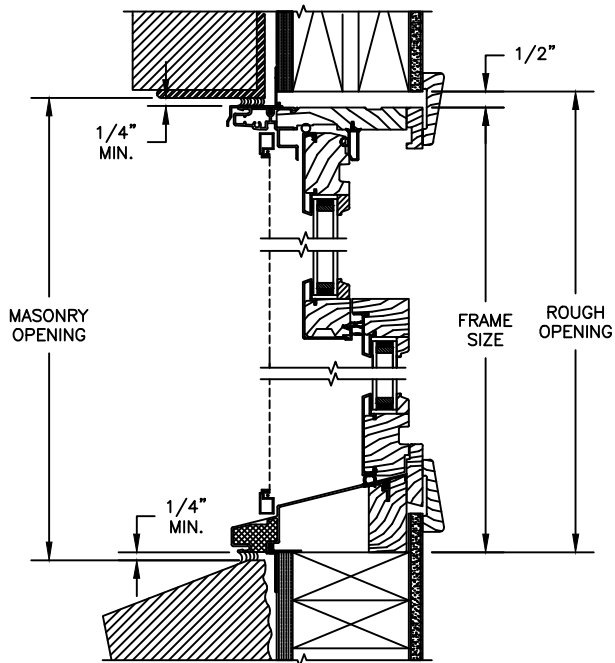
NOTE :  
THE ABOVE WALL SECTIONS REPRESENT TYPICAL WALL CONDITIONS, THESE DETAILS ARE NOT INTENDED AS INSTALLATIONS INSTRUCTIONS. PLEASE REFER TO THE INSTALLATION INSTRUCTIONS PROVIDED WITH THE PURCHASED UNITS.

# Pinnacle Series

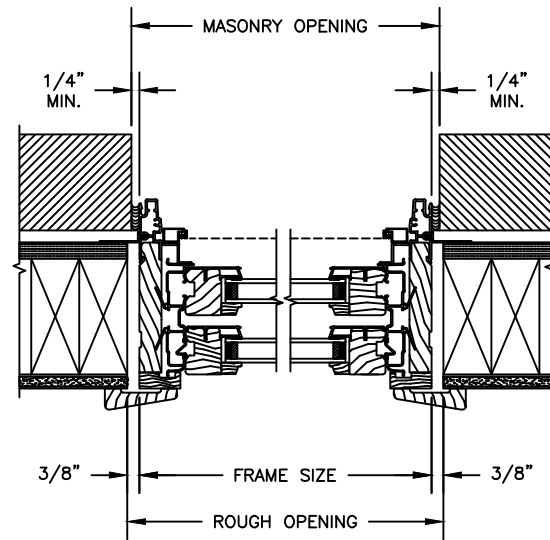
## CLAD DOUBLE HUNG

SECTION DETAILS : CONSTRUCTION

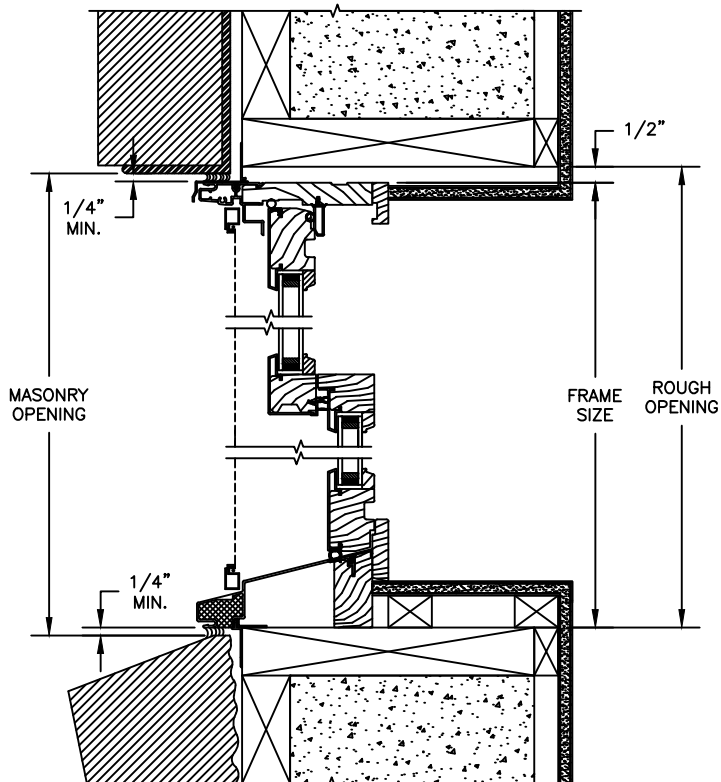
SCALE: 2" = 1'-0"



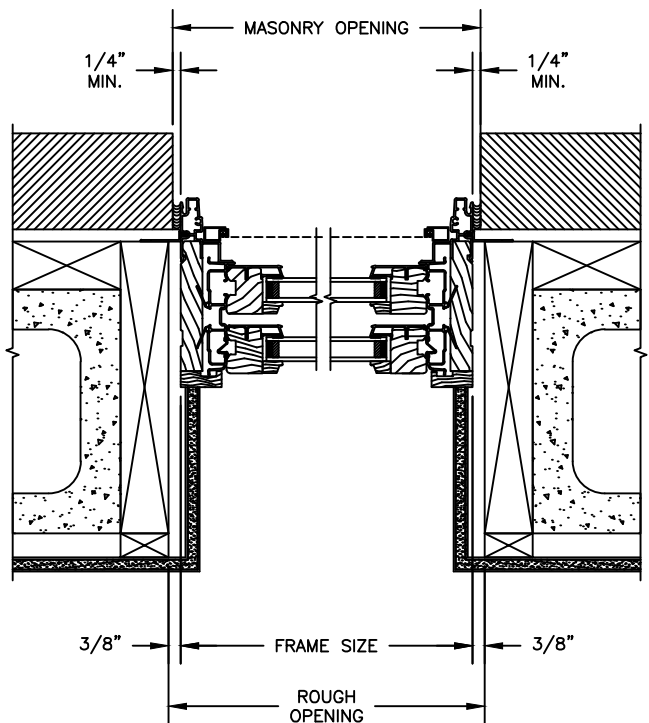
HEAD JAMB & SILL  
2 X 4 FRAME WITH BRICK VENEER



JAMBS  
2 X 4 FRAME WITH BRICK VENEER



HEAD JAMB & SILL  
8" CONCRETE BLOCK WALL  
WITH BRICK VENEER



JAMBS  
8" CONCRETE BLOCK WALL  
WITH BRICK VENEER

# Pinnacle Series

## CLAD DOUBLE HUNG

SECTION DETAILS : 30/45 DEGREES BAY

SCALE: 2" = 1'-0"

