

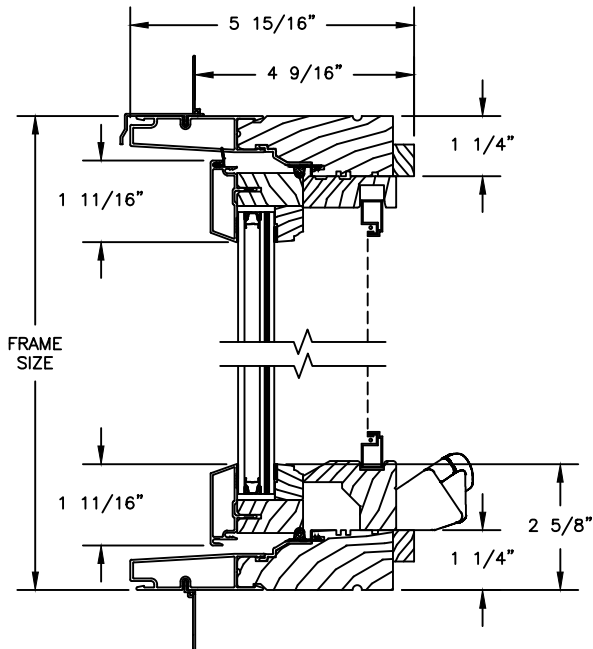
# Pinnacle Impact Series

## CLAD CASEMENT

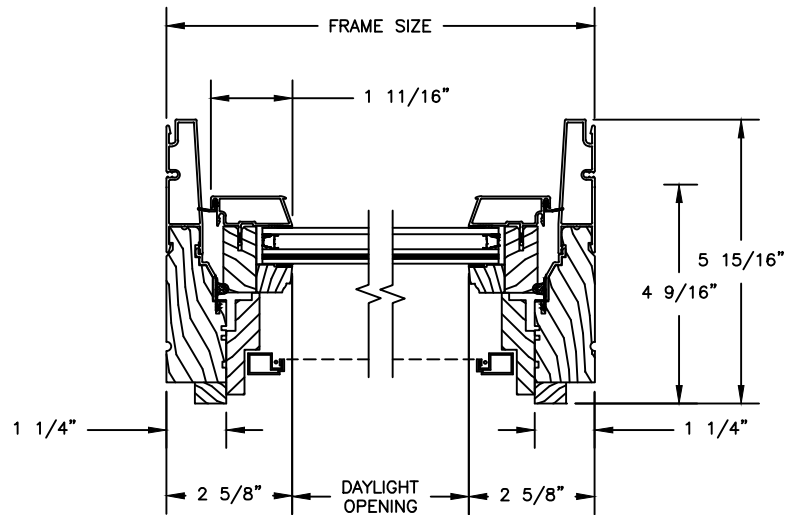
SECTION DETAILS : OPERATING / STATIONARY

SCALE: 3" = 1'-0"

### OPERATING

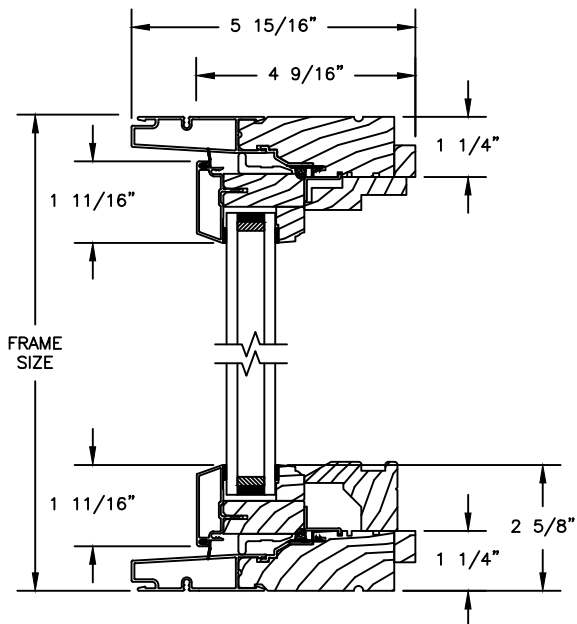


HEAD JAMB & SILL

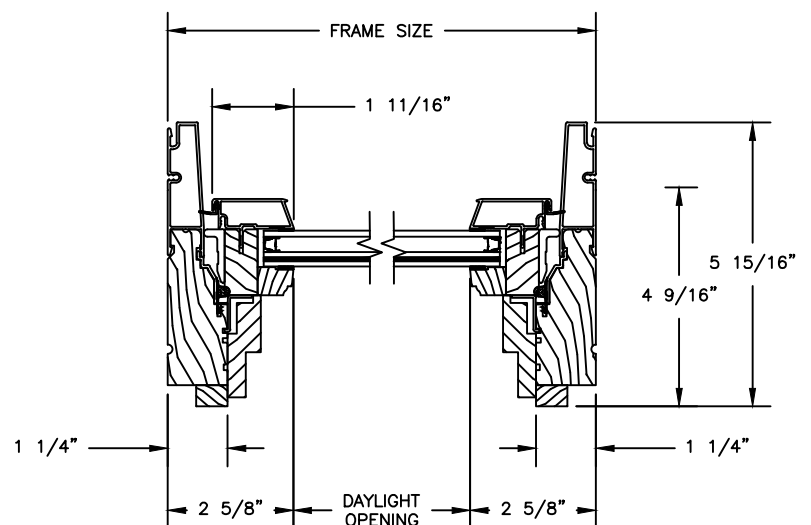


JAMBS

### STATIONARY



HEAD JAMB & SILL



JAMBS

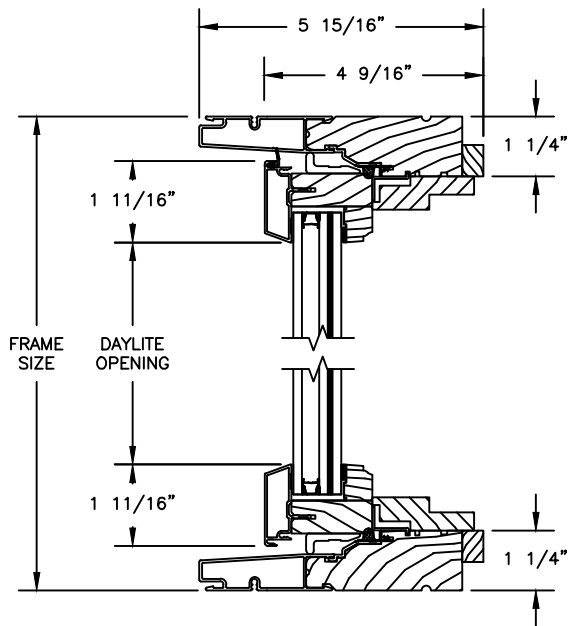
# Pinnacle Impact Series

## CLAD CASEMENT

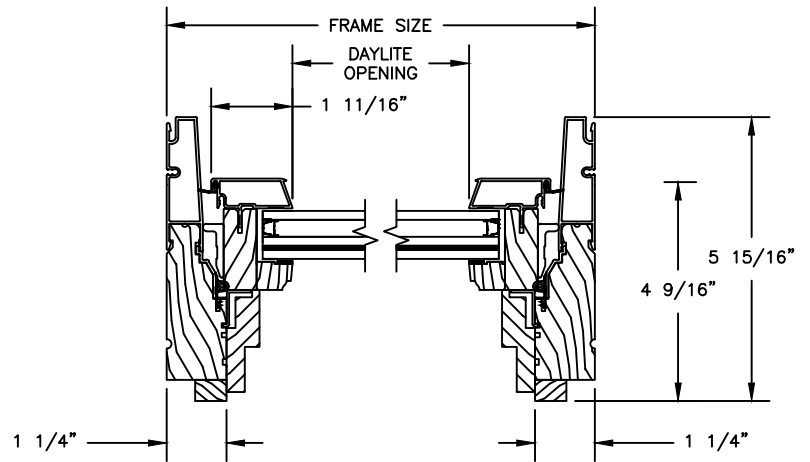
SECTION DETAILS : PICTURE

SCALE: 3" = 1'-0"

PICTURE (1" IG)



HEAD JAMB & SILL



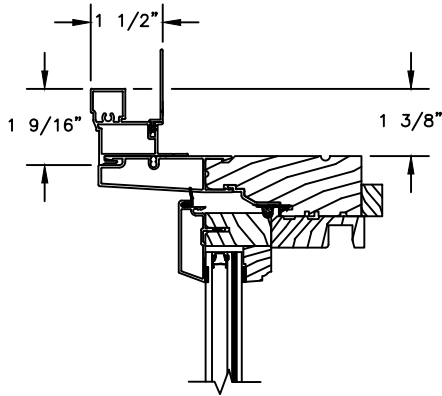
JAMBS

# Pinnacle Impact Series

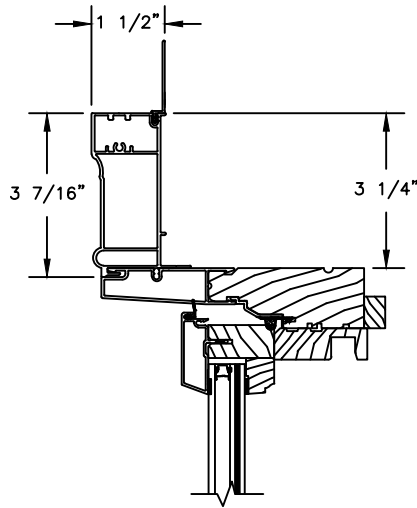
## CLAD CASEMENT

SECTION DETAILS : CASING OPTIONS

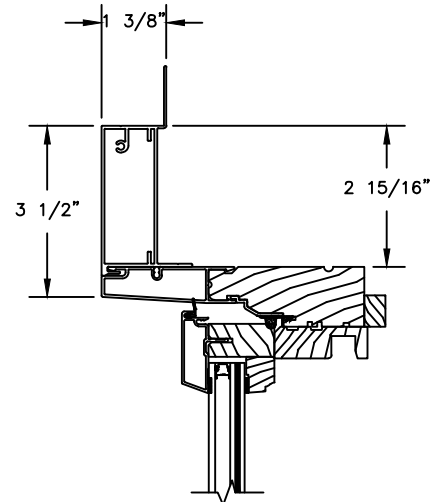
SCALE: 3" = 1'-0"



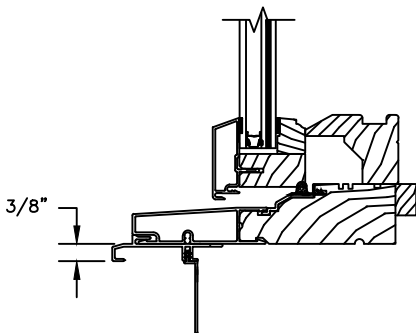
HEAD JAMB WITH  
CLAD BRICKMOULD CASING



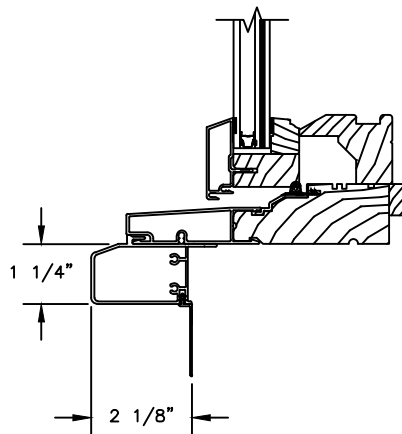
HEAD JAMB WITH  
CLAD WILLIAMSBURG CASING



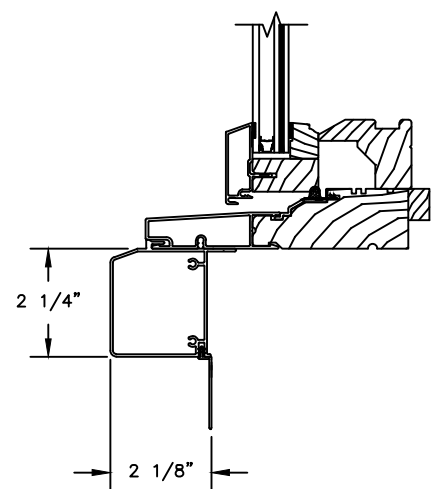
HEAD JAMB WITH  
3 1/2" CLAD FLAT CASING



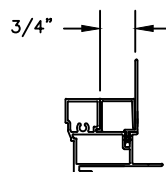
SILL WITH  
3/8" CLAD SUBSILL



SILL WITH  
1 1/4" CLAD SUBSILL



SILL WITH  
2 1/4" CLAD SUBSILL



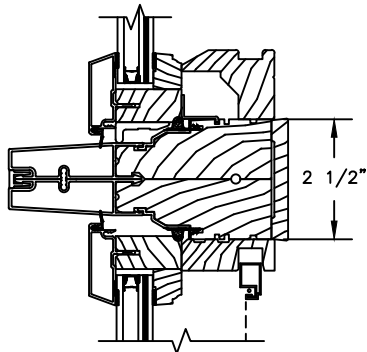
CLAD BRICKMOULD CASING  
WITH OPTIONAL J-CHANNEL COVER

# Pinnacle Impact Series

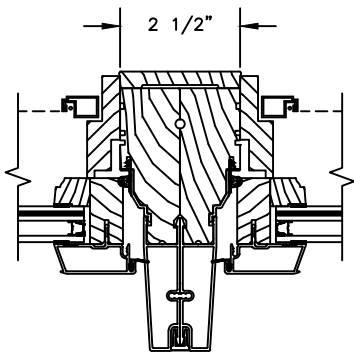
## CLAD CASEMENT

SECTION DETAILS : MULLIONS

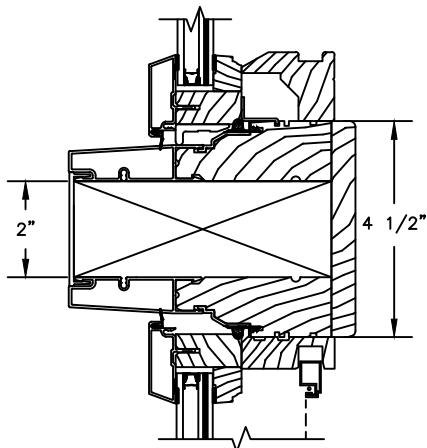
SCALE: 3" = 1'-0"



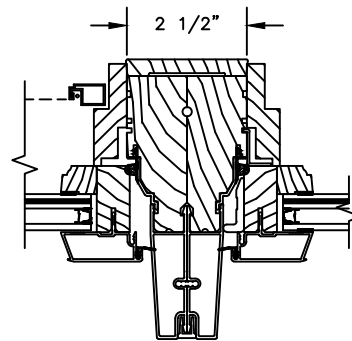
HORIZONTAL MULLION  
STATIONARY/OPERATOR



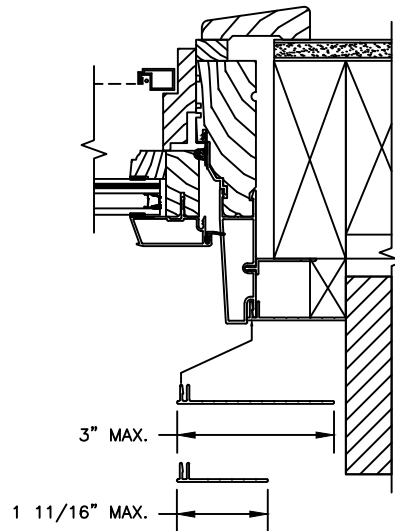
VERTICAL MULLION  
OPERATOR/OPERATOR



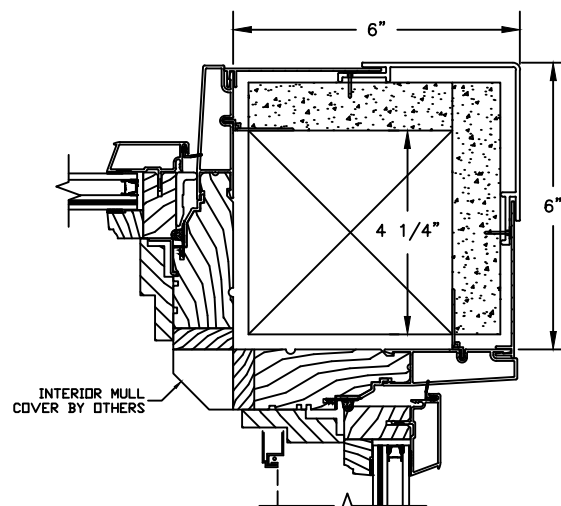
2" STRUCTURAL MULLION BY OTHERS



VERTICAL MULLION  
OPERATOR/PICTURE



OPTIONAL FRAME  
EXPANDERS



90° MULLION  
STATIONARY/OPERATOR

(ONLY USED WITH 4 9/16" JAMB & 3 1/4"  
FRAME EXPANDER)


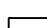
# Pinnacle Impact Series

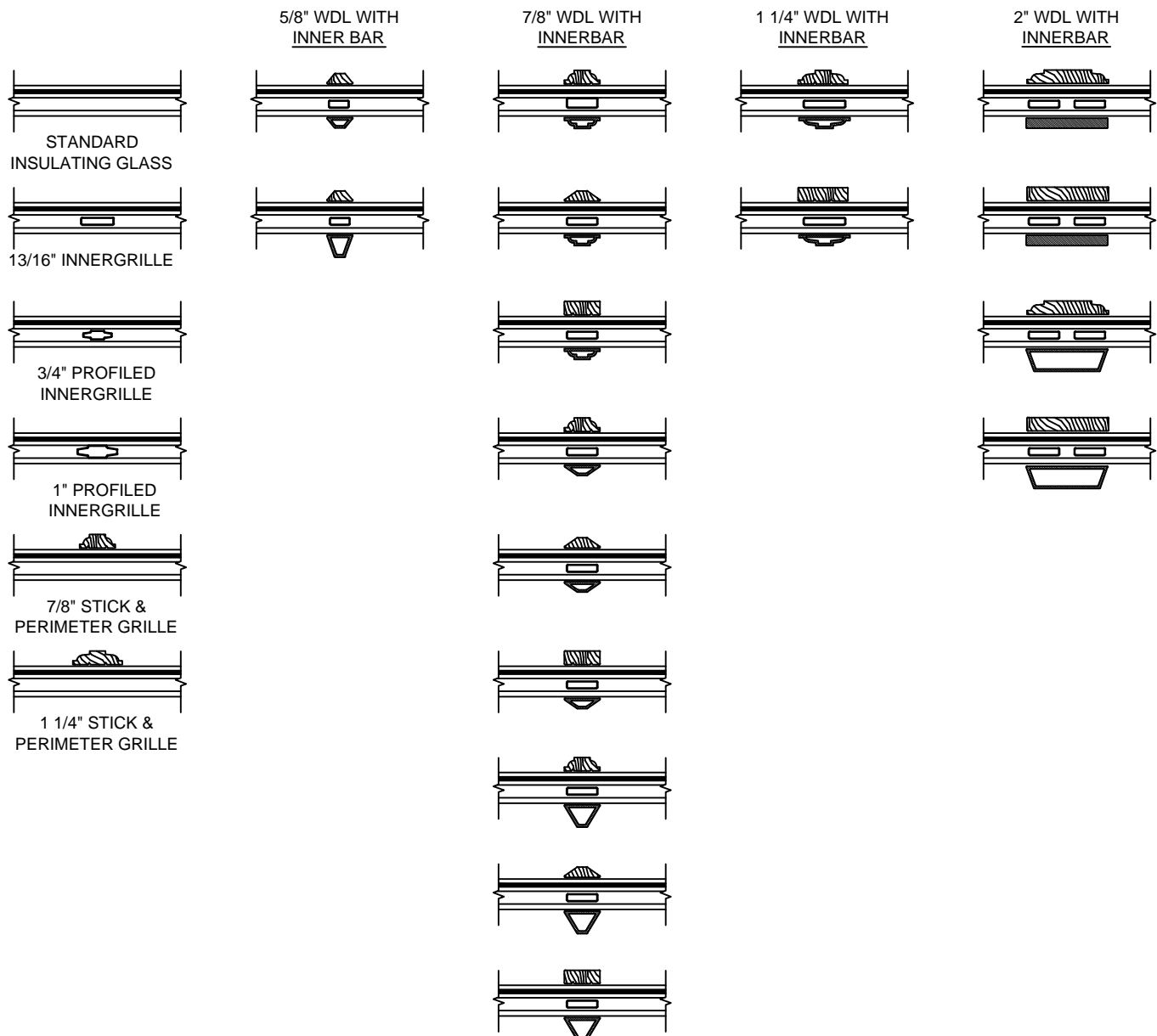
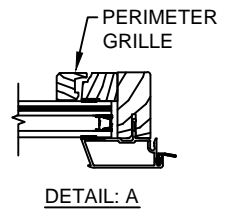
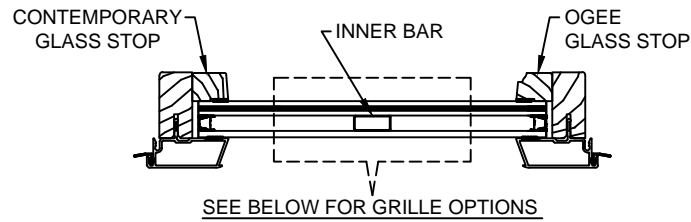
## CLAD CASEMENT

SECTION DETAILS : DIVIDED LITE OPTIONS

SCALE: 3" = 1'-0"

### AVAILABLE STYLES

-  - PUTTY
-  - TALL PUTTY
-  - OGEE
-  - CONTEMPORARY



### NOTE:

\* ALL WDL OPTIONS CAN BE ORDERED WITH OR WITHOUT INNER BAR

\* PERIMETER GRILLES ONLY AVAILABLE IN THE 7/8" AND 1 1/4" OGEE STYLE GLASS STOP (SEE DETAIL: A)

3/28/16