

SECTION DETAILS : OPERATING
SCALE: 3" = 1'-0"

SECTION DETAILS : OPERATING
SCALE: 3" = 1'-0"

Technical drawing of a window head jamb and sill assembly. The drawing shows a cross-section of the window frame and the surrounding structure. Key dimensions and components are labeled:

- Dimensions:**
 - Top horizontal dimension: $5 \frac{15}{16}"$
 - Top left horizontal dimension: $1 \frac{3}{8}"$
 - Top right horizontal dimension: $4 \frac{9}{16}"$
 - Left vertical dimension (FRAME SIZE): $2 \frac{5}{16}"$
 - Right vertical dimension (DAYLITE OPENING): $3 \frac{1}{4}"$
 - Bottom left vertical dimension: $2 \frac{5}{16}"$
 - Bottom right vertical dimension: $3 \frac{1}{4}"$
 - Bottom right horizontal dimension: $1 \frac{1}{4}"$
- Components:**
 - HEAD JAMB & SILL:** The main structural components of the window frame.
 - DAYLITE OPENING:** The opening in the wall through which the window is installed.
 - FRAME SIZE:** The size of the window frame.

Technical drawing of a window jamb cross-section. The drawing shows two jamb profiles separated by a central opening. Key dimensions are indicated:

- FRAME SIZE:** The overall width of the frame assembly.
- JAMB WIDTH:** Each jamb profile is 2 5/16" wide.
- DAYLITE OPENING:** The central opening between the jambs, with a width of 3 1/4" on each side of the centerline.
- Vertical Dimensions:**
 - Top flange height: 1 3/8"
 - Distance from top flange to bottom flange: 5 15/16"
 - Distance from bottom flange to base: 4 9/16"
 - Base thickness: 1 1/4"

JAMBS

Technical drawing showing the cross-section of a window head and sill assembly. The drawing includes the following dimensions and labels:

- Top horizontal dimension: $5 \frac{15}{16}"$
- Left horizontal dimension: $1 \frac{3}{8}"$
- Right horizontal dimension: $4 \frac{9}{16}"$
- Left vertical dimension: $2 \frac{5}{16}"$
- Right vertical dimension: $1 \frac{1}{4}"$
- Right vertical dimension: $3 \frac{1}{4}"$
- Label: FRAME SIZE
- Label: DAYLITE OPENING
- Left vertical dimension: $2 \frac{5}{16}"$
- Right vertical dimension: $3 \frac{1}{4}"$
- Right vertical dimension: $1 \frac{1}{4}"$
- Label: HEAD JAMB & SILL

Technical drawing of a double-hung window jamb assembly. The drawing shows a cross-section of the window frame and sashes. Key dimensions and labels include:

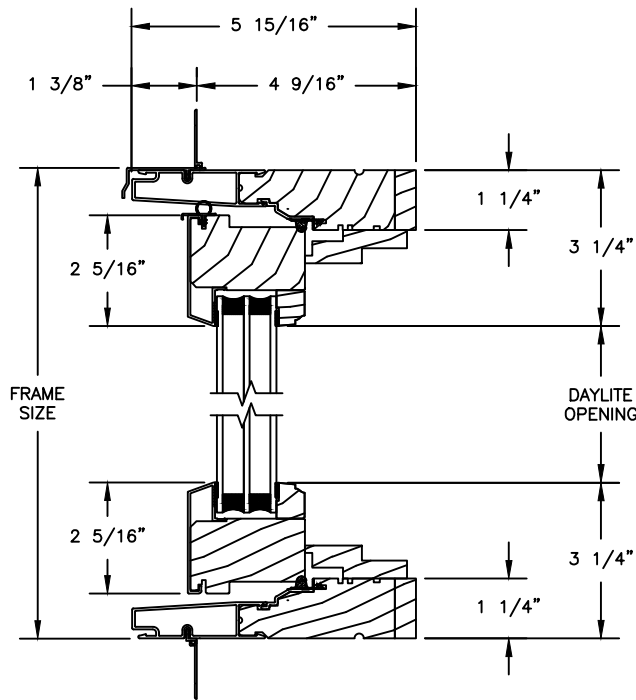
- FRAME SIZE**: Indicated by a dimension line at the top.
- 2 5/16"**: Dimension for the distance from the frame centerline to the jamb face on both sides.
- 1 3/8"**: Dimension for the height of the top sash.
- 5 15/16"**: Dimension for the height of the bottom sash.
- 4 9/16"**: Dimension for the height of the bottom sash.
- 1 1/4"**: Dimension for the distance from the frame centerline to the jamb face on both sides.
- 3 1/4"**: Dimension for the distance from the frame centerline to the jamb face on both sides.
- DAYLITE OPENING**: Label for the opening between the two sashes.
- JAMBS**: Label for the vertical frame members.

Pinnacle Select Series

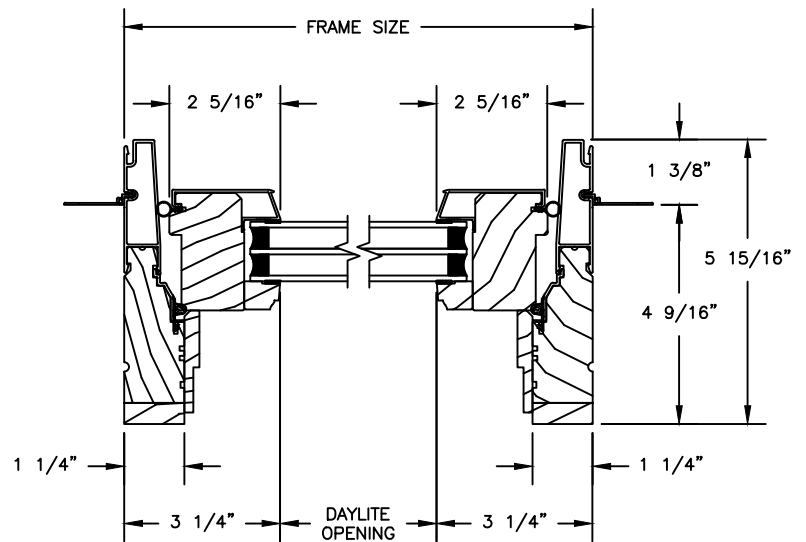
CLAD PUSH-OUT CASEMENT

SECTION DETAILS : 1 1/4" TRIPLE IG OPERATING

PUSH-OUT

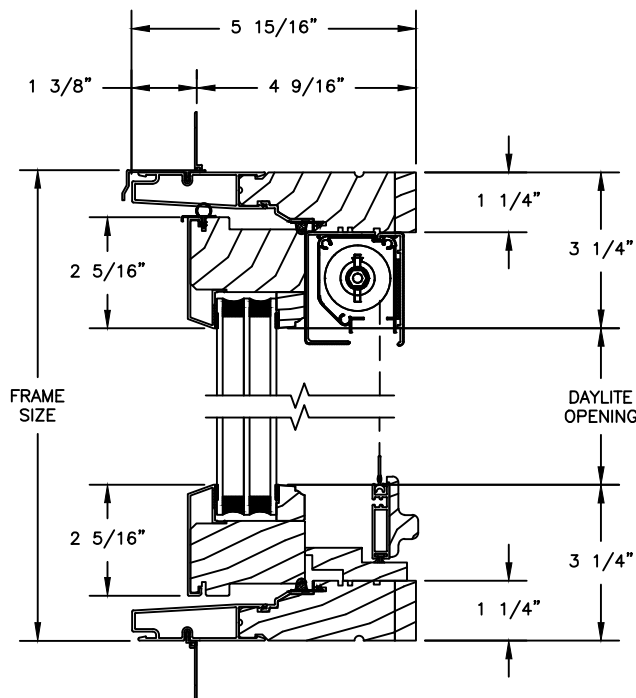


HEAD JAMB & SILL

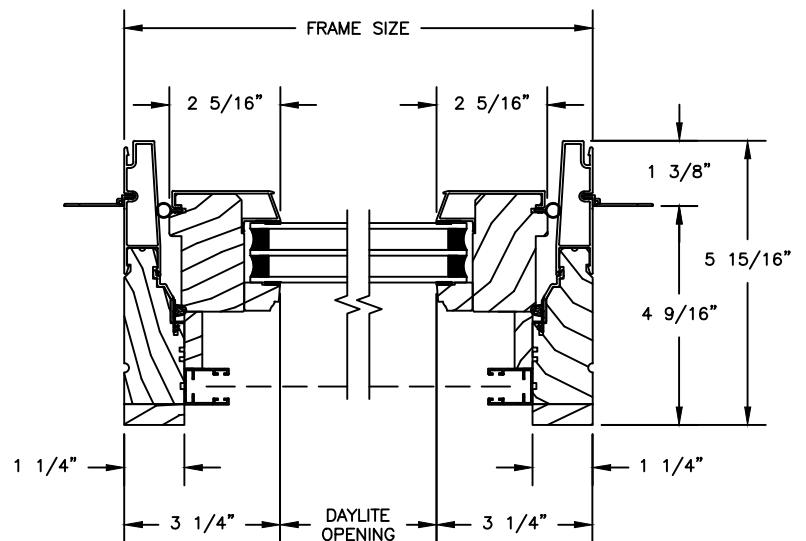


JAMBS

PUSH-OUT WITH RETRACTABLE SCREEN



HEAD JAMB & SILL



JAMBS

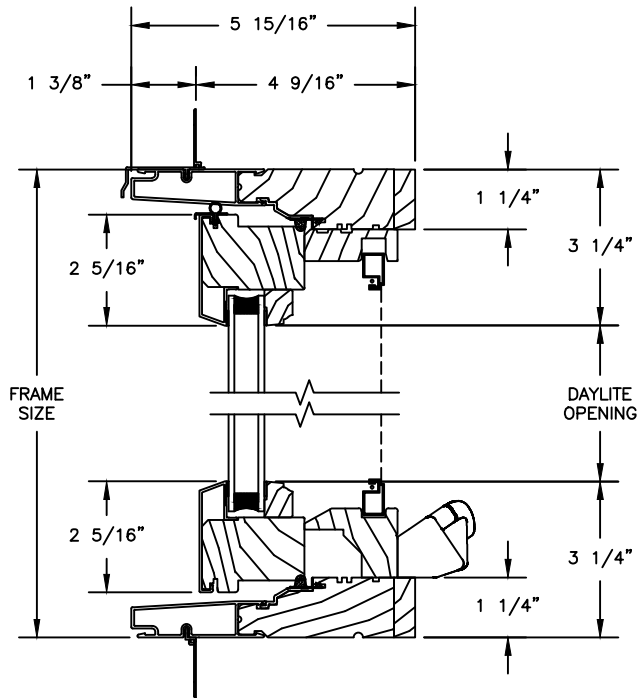
Pinnacle Select Series

CLAD CASEMENT

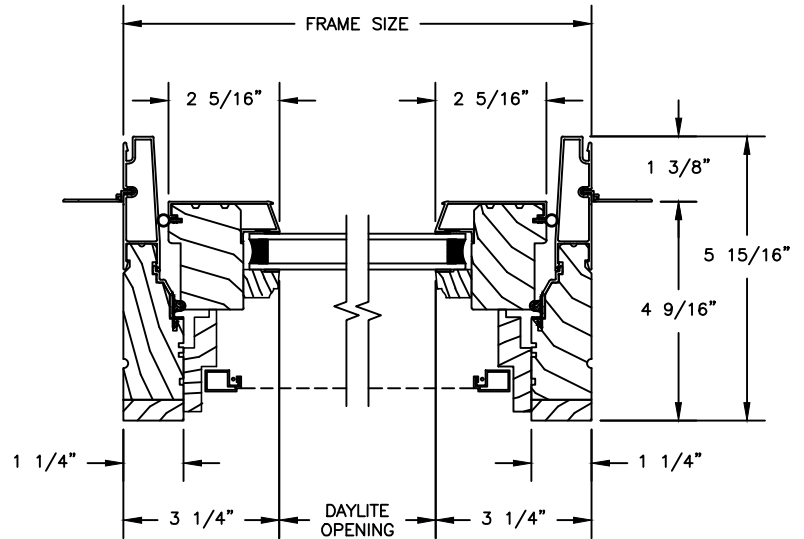
SECTION DETAILS : OPERATING

SCALE: 3" = 1'-0"

OPERATING

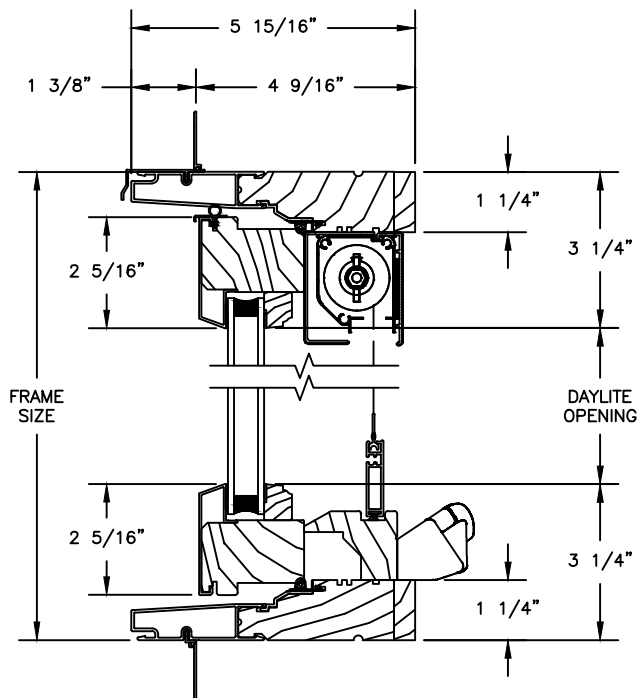


HEAD JAMB & SILL

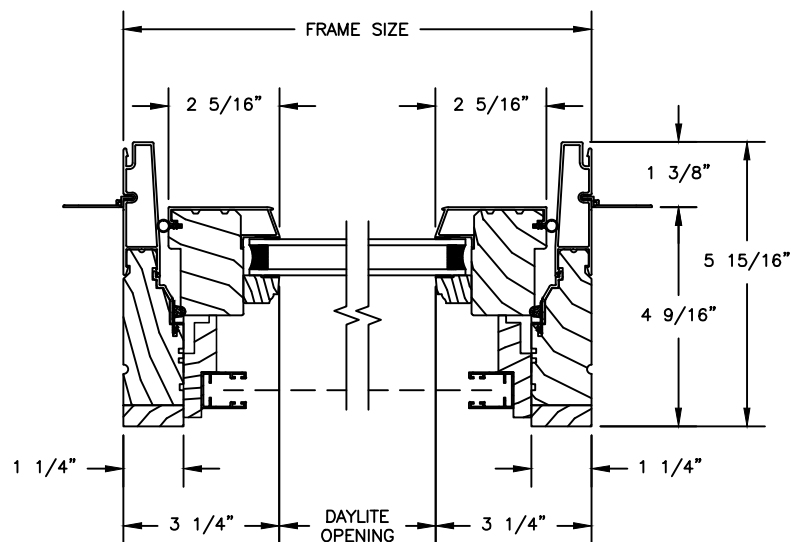


JAMBS

OPERATING WITH RETRACTABLE SCREEN



HEAD JAMB & SILL



JAMBS

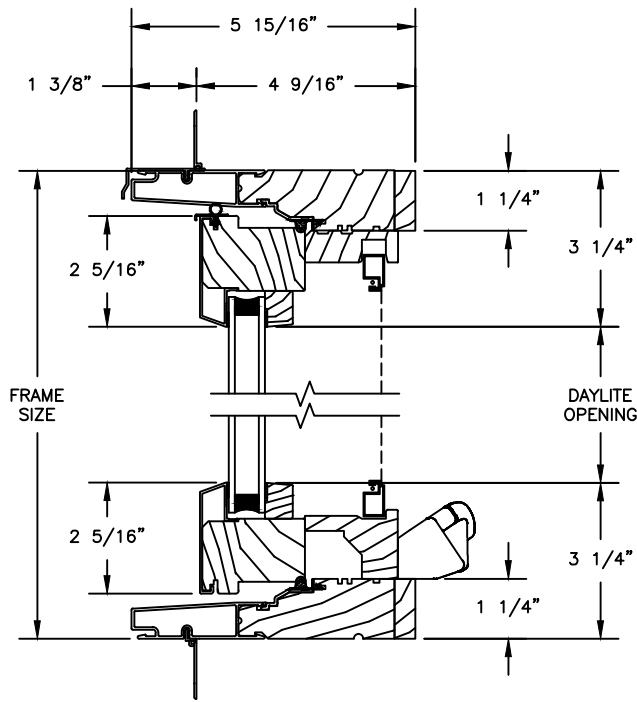
Pinnacle Select Series

CLAD CASEMENT

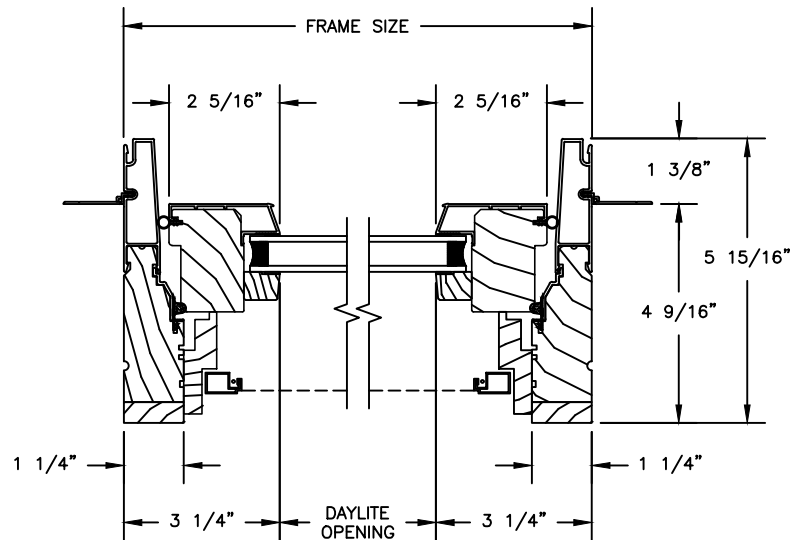
SECTION DETAILS : OPERATING WITH CONTEMPORARY STOPS

SCALE: 3" = 1'-0"

OPERATING

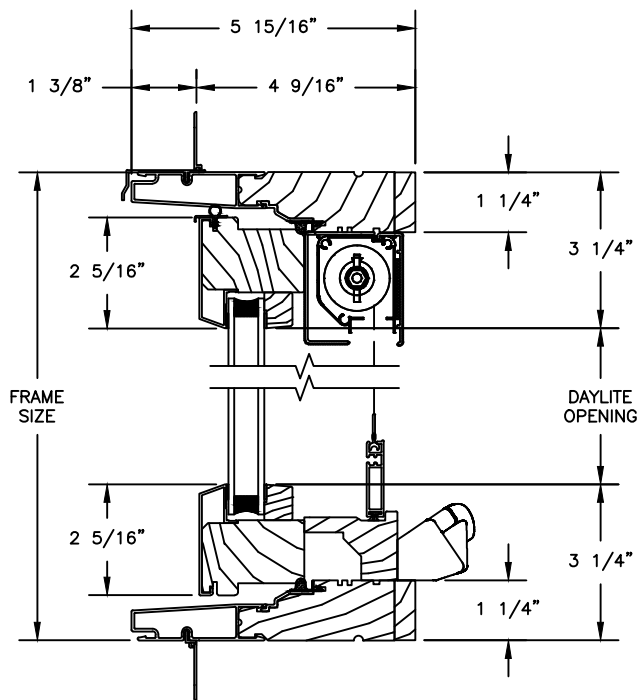


HEAD JAMB & SILL

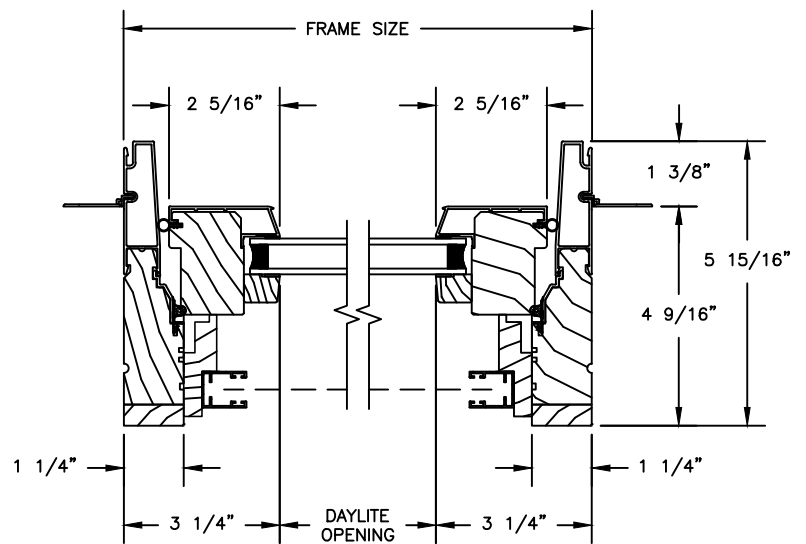


JAMBS

OPERATING WITH RETRACTABLE SCREEN



HEAD JAMB & SILL



JAMBS

SECTION DETAILS : 1 1/4" TRIPLE IG OPERATING
SCALE: 3" = 1'-0"

Technical drawing of a double-hung window jamb assembly. The drawing shows a cross-section of the window frame and the jamb. Key dimensions are labeled:

- FRAME SIZE**: The overall width of the frame.
- JAMB THICKNESS**: $2 \frac{5}{16}"$ (indicated on both sides).
- DAYLITE OPENING**: The opening for the daylite, with a width of $3 \frac{1}{4}"$ on each side.
- Vertical Dimensions**:
 - $1 \frac{3}{8}"$: Height of the top jamb.
 - $5 \frac{15}{16}"$: Total height of the jamb assembly.
 - $4 \frac{9}{16}"$: Height of the bottom jamb.
 - $1 \frac{1}{4}"$: Height of the bottom flange (indicated on both sides).

JAMBS

Technical cross-section diagram of a double-hung window assembly. The diagram illustrates the internal components, including the frame, sashes, and the DAYLITE OPENING. Key dimensions are provided in inches:

- FRAME SIZE:** Indicated by a horizontal dimension line at the top.
- 2 5/16"**: Two horizontal dimensions indicating the width of the frame sections on either side of the central opening.
- 1 3/8"**: A vertical dimension indicating the height of the upper sash.
- 5 15/16"**: A vertical dimension indicating the height of the lower sash.
- 4 9/16"**: A vertical dimension indicating the height of the central opening.
- 1 1/4"**: Two horizontal dimensions indicating the width of the frame sections on either side of the central opening.
- 3 1/4"**: Two horizontal dimensions indicating the width of the frame sections on either side of the central opening.
- JAMBS:** Labeled at the bottom of the diagram.

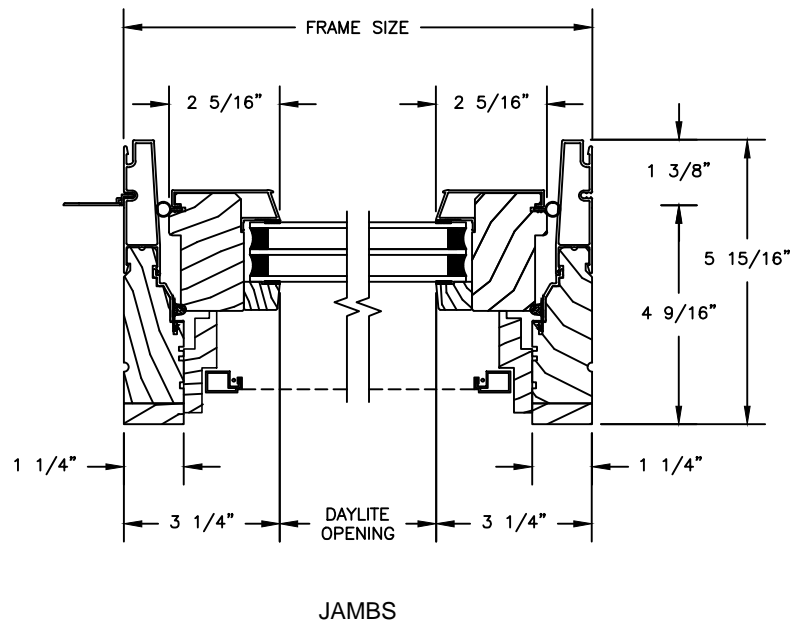
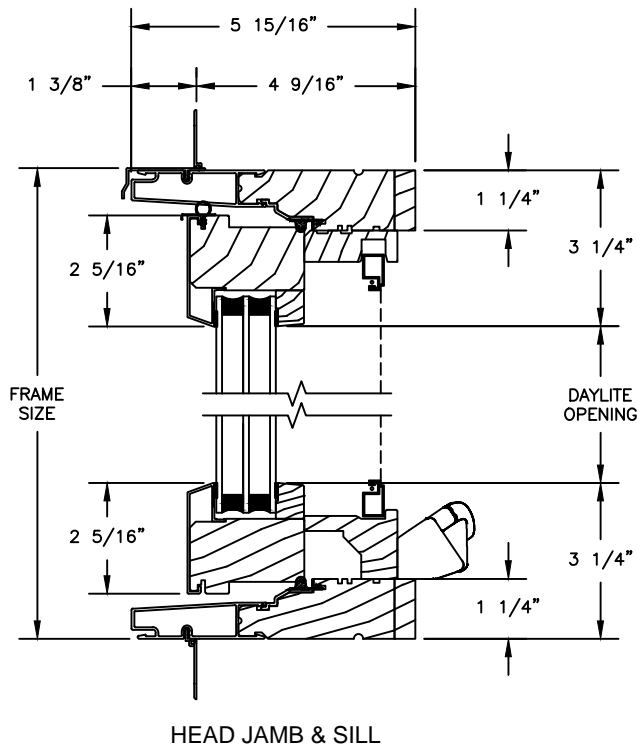
Pinnacle Select Series

CLAD CASEMENT

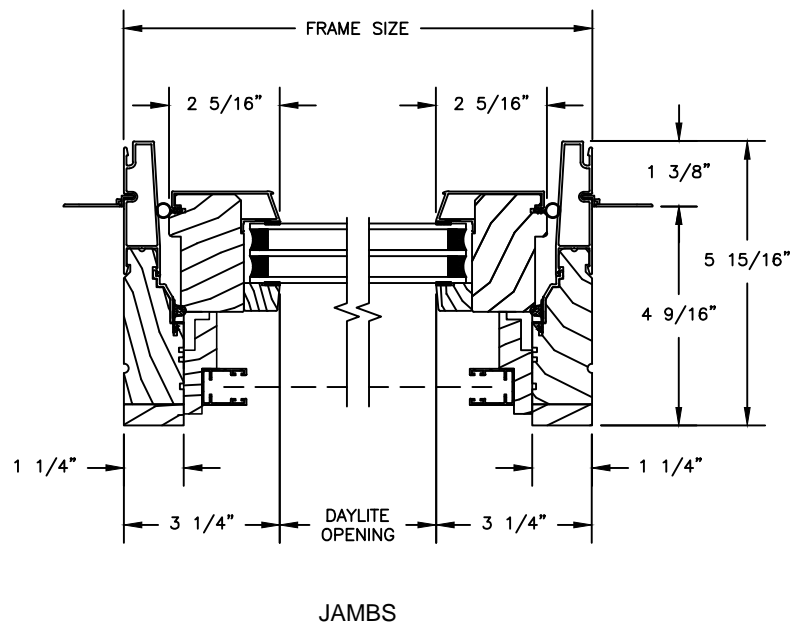
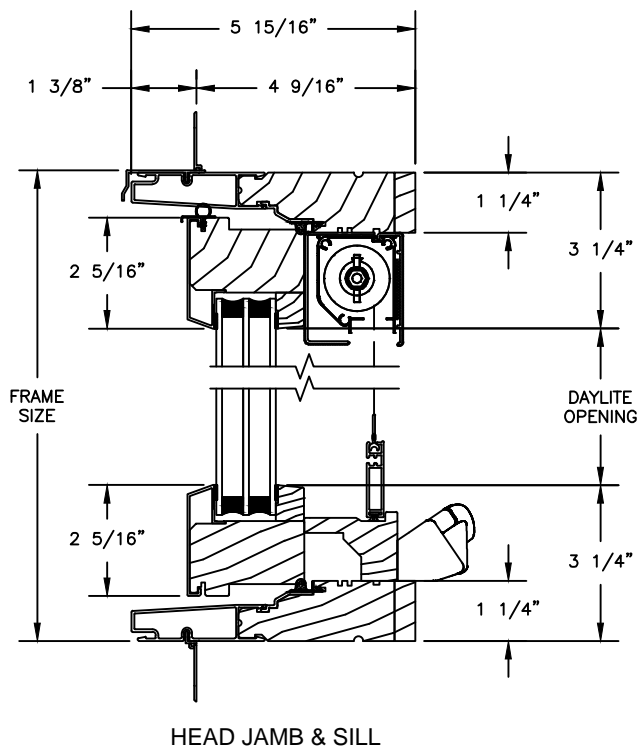
SECTION DETAILS : 1 1/4" TRIPLE IG OPERATING WITH CONTEMPORARY STOPS

SCALE: 3" = 1'-0"

OPERATING



OPERATING WITH RETRACTABLE SCREEN

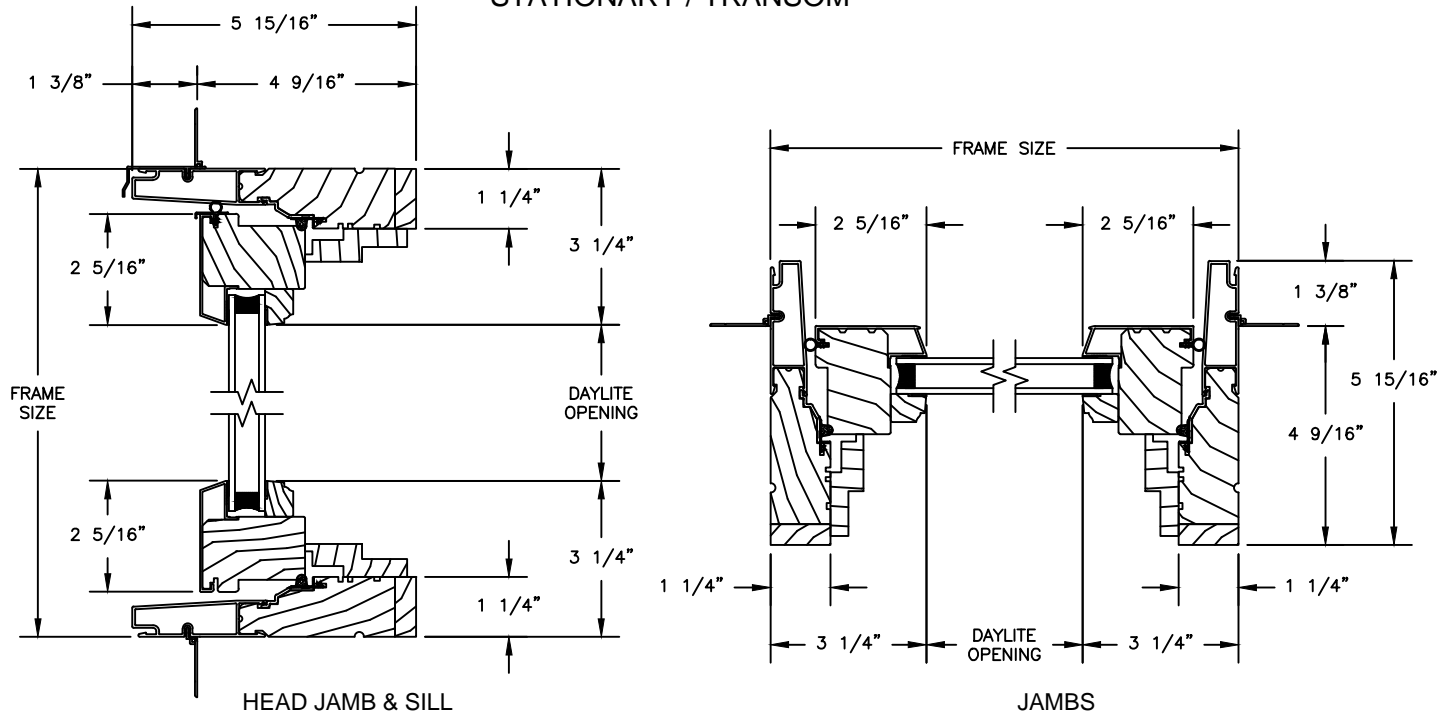


CLAD PUSH-OUT CASEMENT

SECTION DETAILS : STATIONARY / TRANSOM

SCALE: 3" = 1'-0"

STATIONARY / TRANSOM



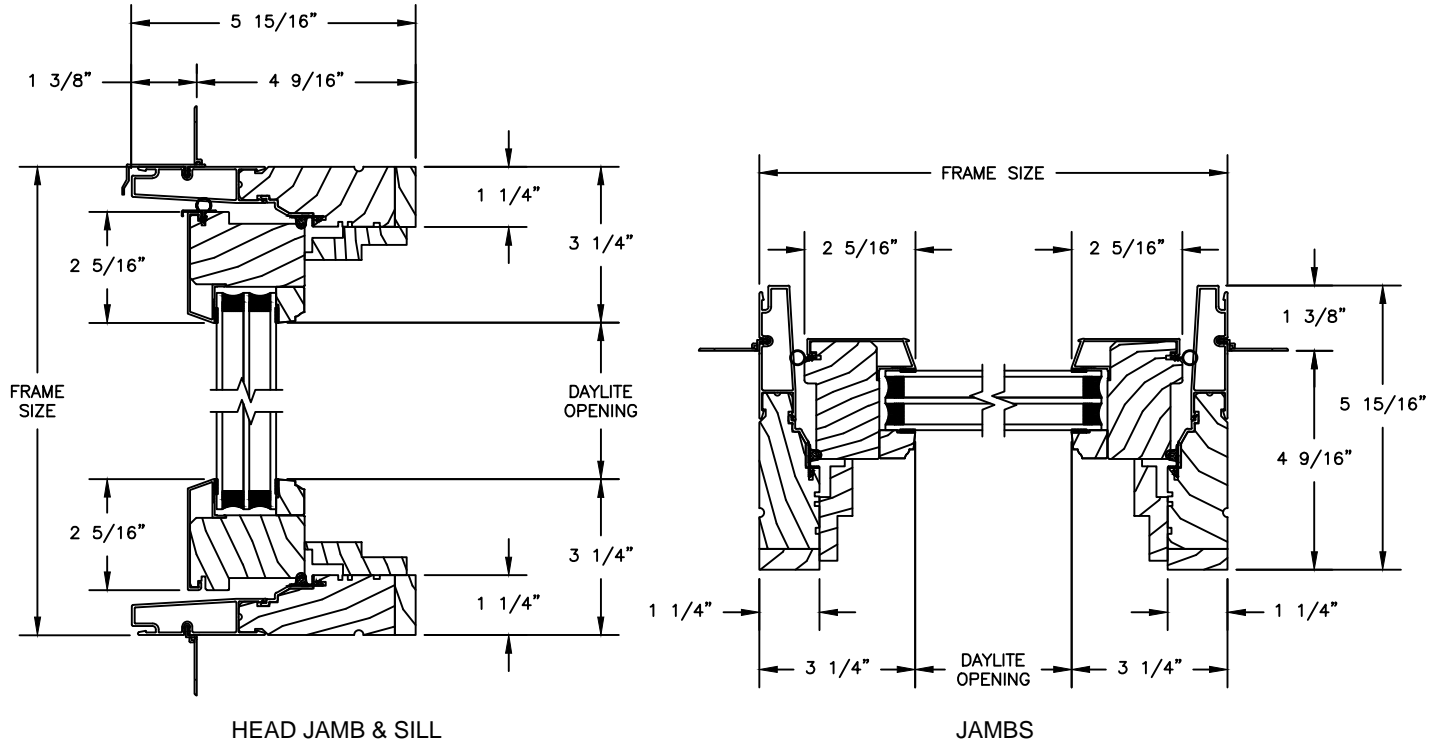
Pinnacle Select Series

CLAD PUSH-OUT CASEMENT

SECTION DETAILS : 1 1/4" TRIPLE IG STATIONARY / TRANSOM

SCALE: 3" = 1'-0"

STATIONARY / TRANSOM



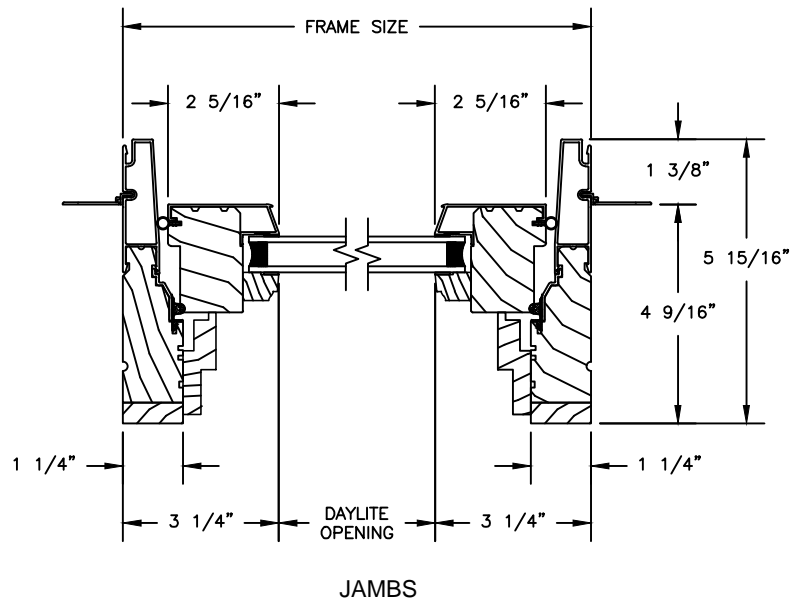
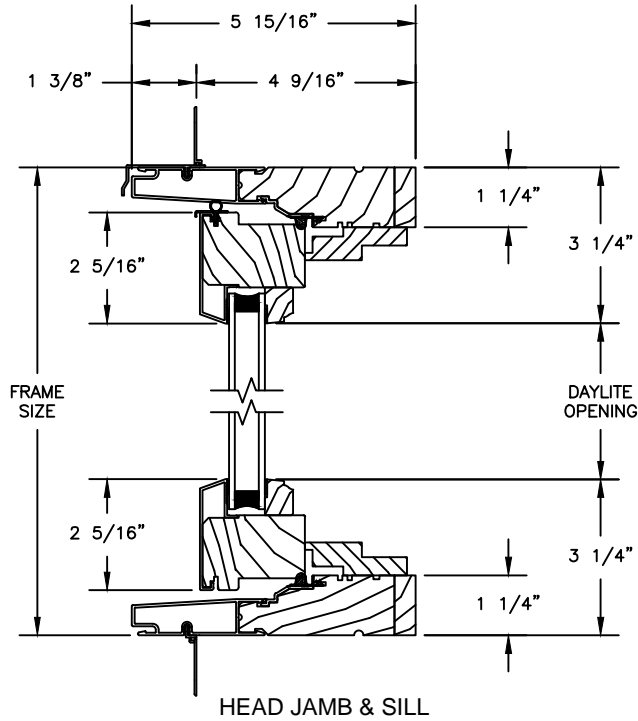
Pinnacle Select Series

CLAD CASEMENT

SECTION DETAILS : STATIONARY & PICTURE/TRANSOM

SCALE: 3" = 1'-0"

STATIONARY / TRANSOM

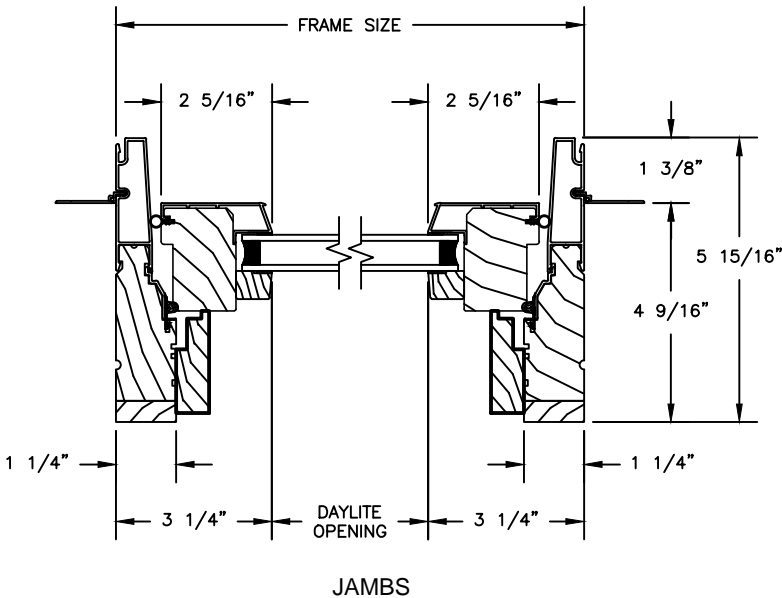
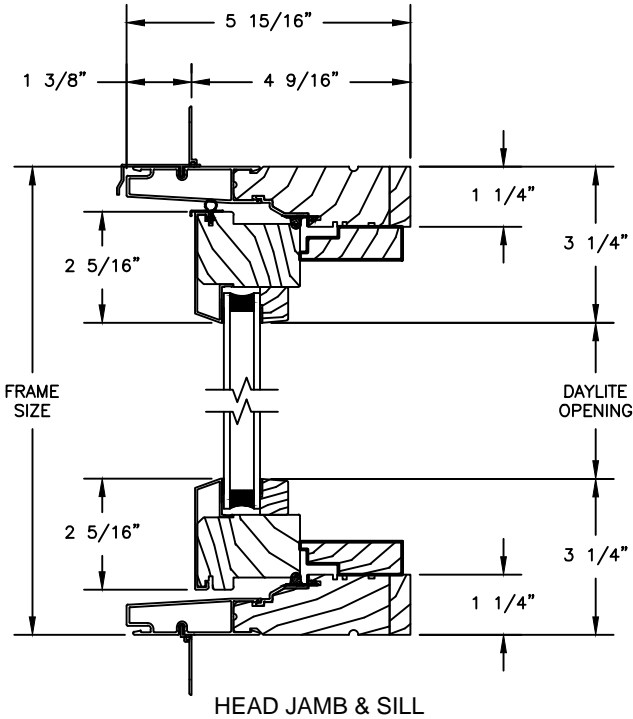


Pinnacle Select Series

CLAD CASEMENT

SECTION DETAILS : STATIONARY / TRANSOM WITH CONTEMPORARY STOPS
SCALE: 3" = 1'-0"

STATIONARY

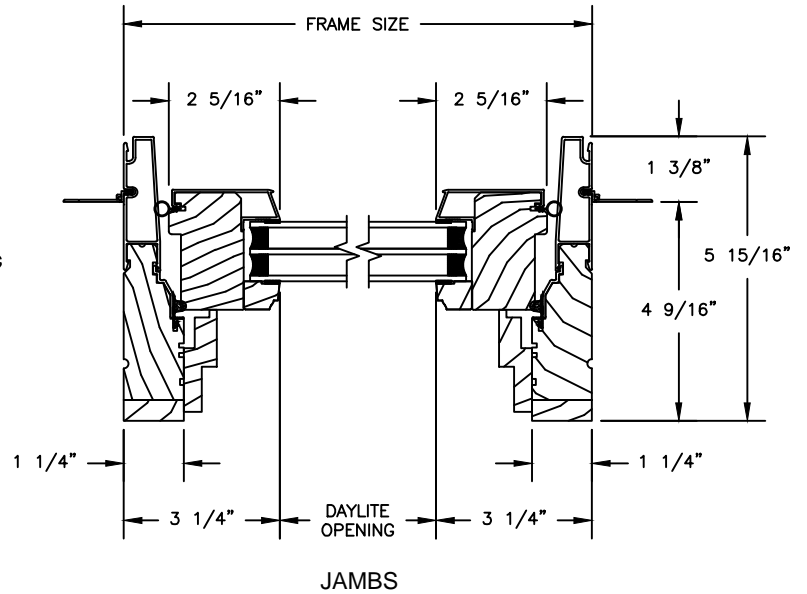
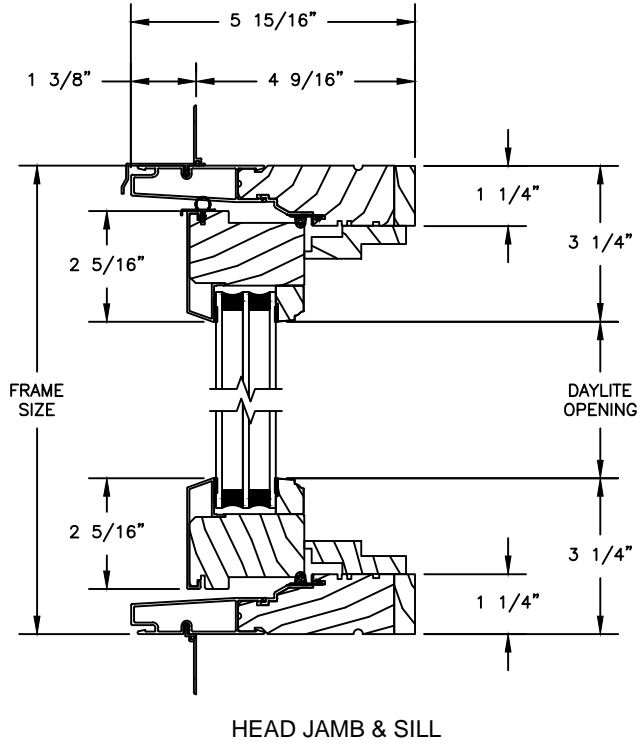


CLAD CASEMENT

SECTION DETAILS : 1 1/4" TRIPLE IG STATIONARY / TRANSOM

SCALE: 3" = 1'-0"

STATIONARY / TRANSOM

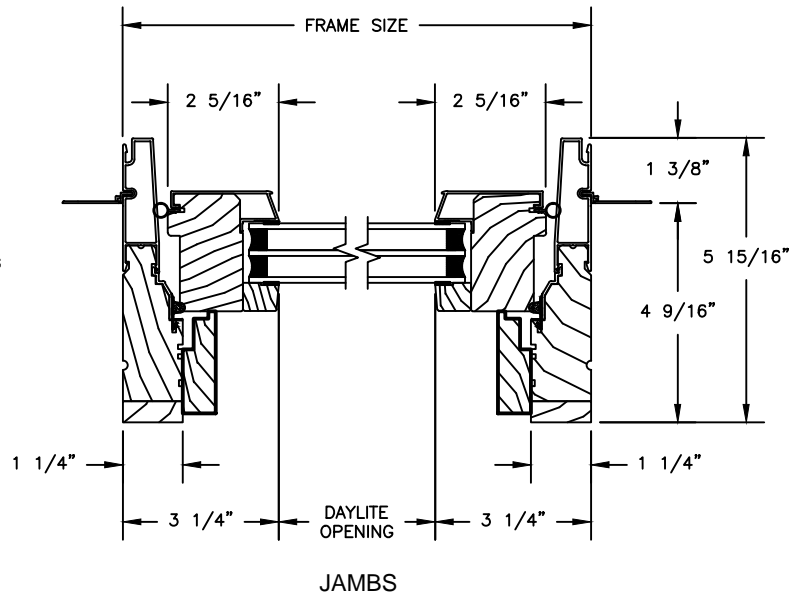
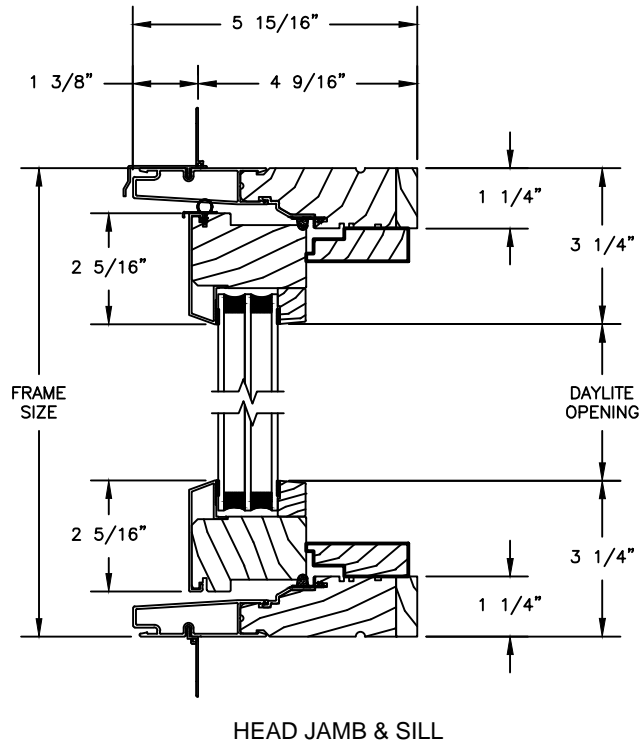


Pinnacle Select Series

CLAD CASEMENT

SECTION DETAILS : 1 1/4" TRIPLE IG STAT IONARY / TRANSOM WITH CONTEMP. STOPS
SCALE: 3" = 1'-0"

STATIONARY

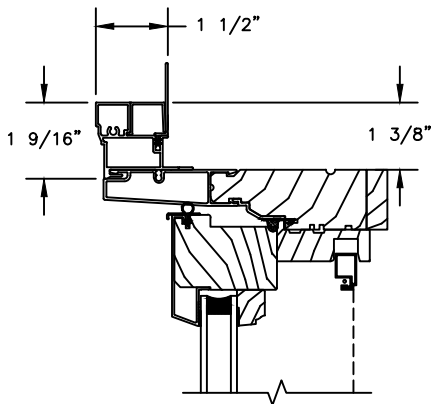


Pinnacle Select Series

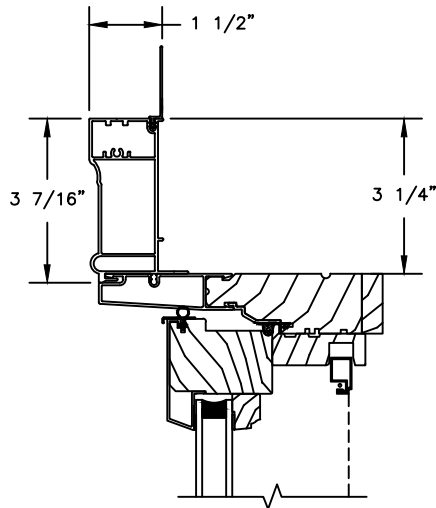
CLAD CASEMENT

SECTION DETAILS : CASING OPTIONS

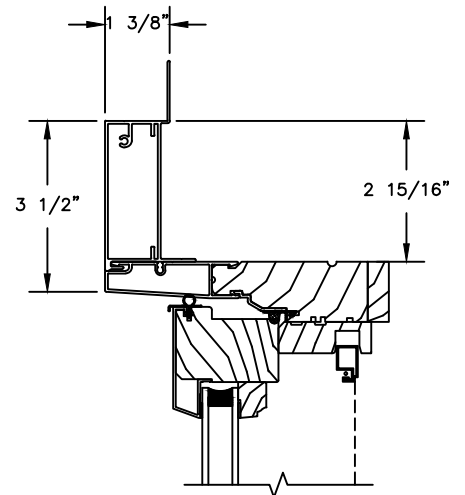
SCALE: 3" = 1'-0"



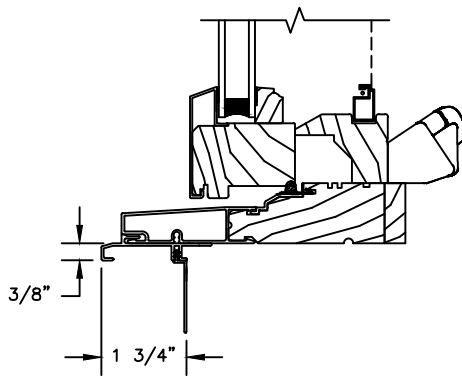
HEAD JAMB WITH
CLAD BRICKMOULD CASING



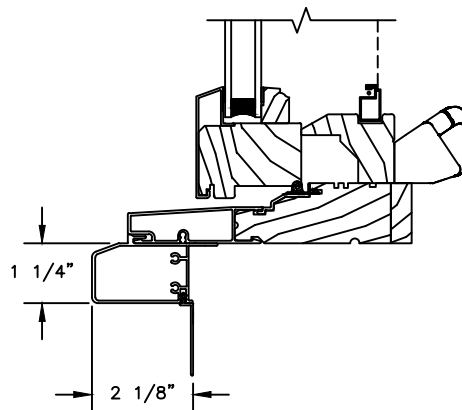
HEAD JAMB WITH
CLAD WILLIAMSBURG CASING



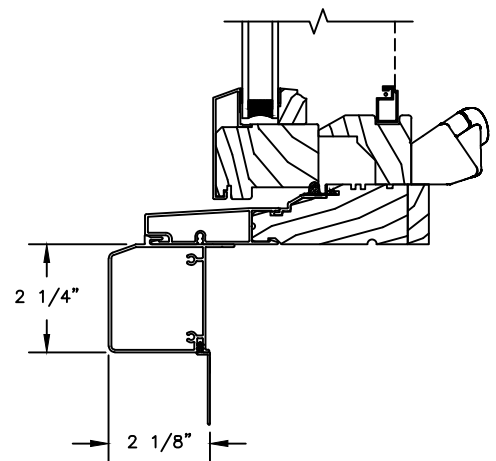
HEAD JAMB WITH
3 1/2\"/>



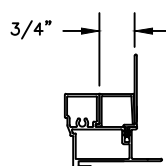
SILL WITH
3/8\"/>



SILL WITH
1 1/4\"/>



SILL WITH
2 1/4\"/>



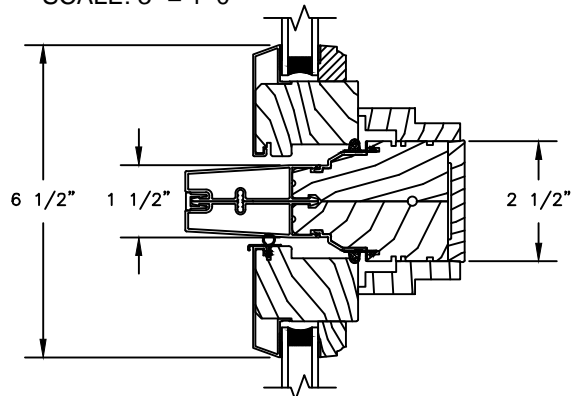
CLAD BRICKMOULD CASING
WITH OPTIONAL J-CHANNEL COVER

Pinnacle Select Series

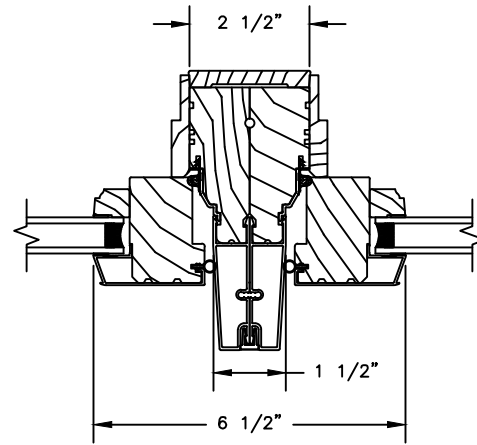
CLAD PUSH-OUT CASEMENT

SECTION DETAILS : MULLIONS

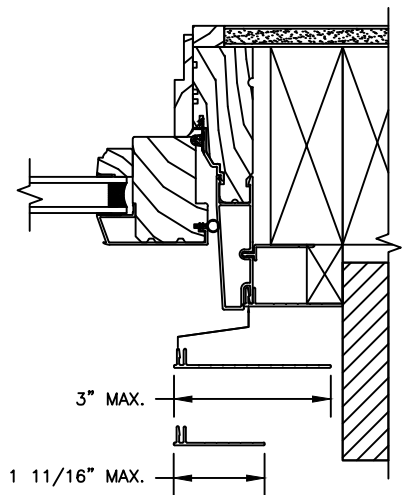
SCALE: 3" = 1'-0"



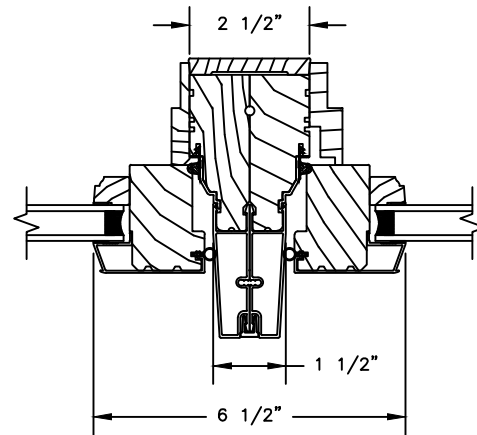
HORIZONTAL MULLION
TRANSOM/OPERATOR



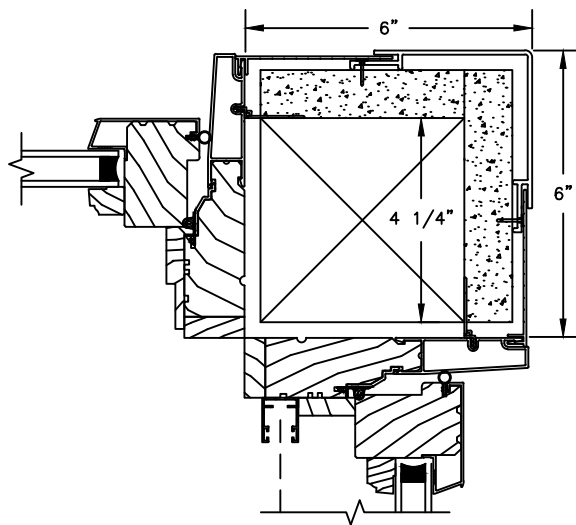
VERTICAL MULLION
OPERATOR/OPERATOR



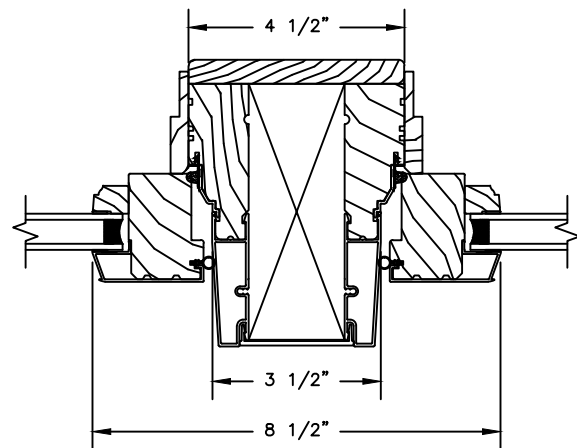
FRAME EXPANDER OPTIONS



VERTICAL MULLION
OPERATOR/STATIONARY



90° MULLION
PUSH OUT/PUSH OUT W/ RETRACTABLE SCREEN
(ONLY USED WITH 4 9/16" JAMB & 3 1/4" FRAME EXPANDER)



VERTICAL MULLION WITH
2" SPREAD MULL
ADDITIONAL WIDTHS INCLUDE: 2 1/2", 4" & 6"

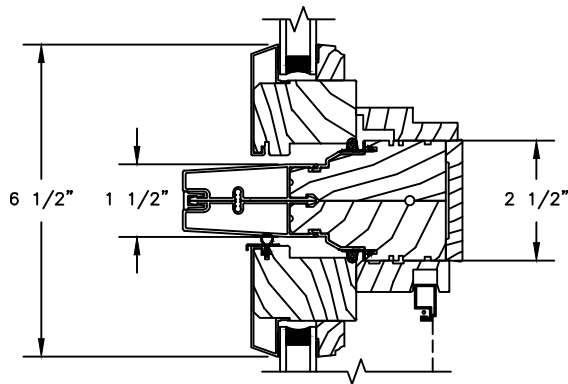
NOTE:
FOR INFORMATION ON STRUCTURAL MULLIONS REFER TO
THE PRODUCT PERFORMANCE AND INFORMATION SECTION.

Pinnacle Select Series

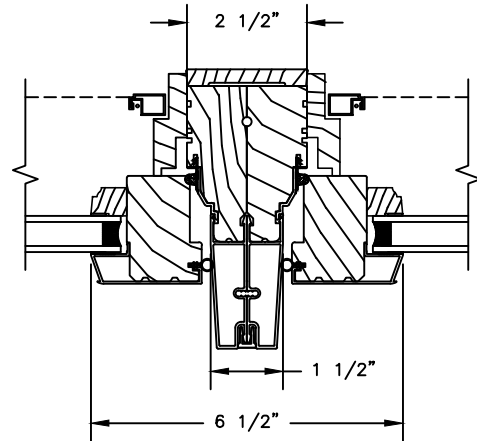
CLAD CASEMENT

SECTION DETAILS : MULLIONS

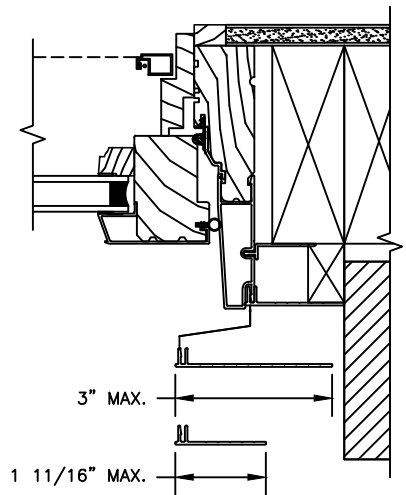
SCALE: 3" = 1'-0"



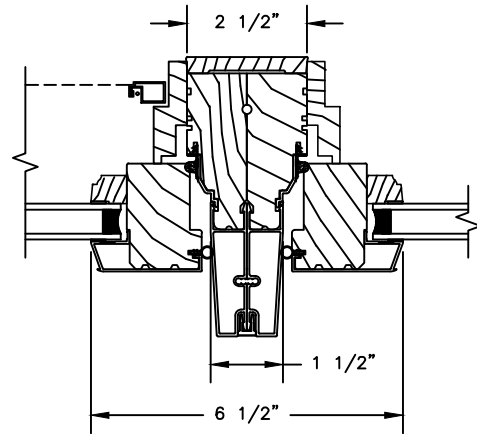
HORIZONTAL MULLION
STATIONARY/OPERATOR



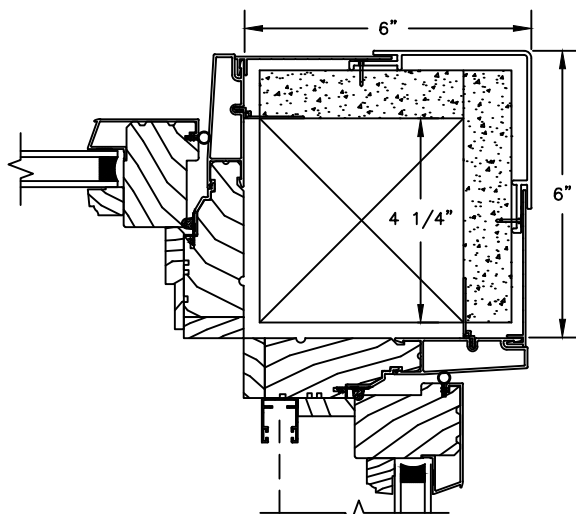
VERTICAL MULLION
OPERATOR/OPERATOR



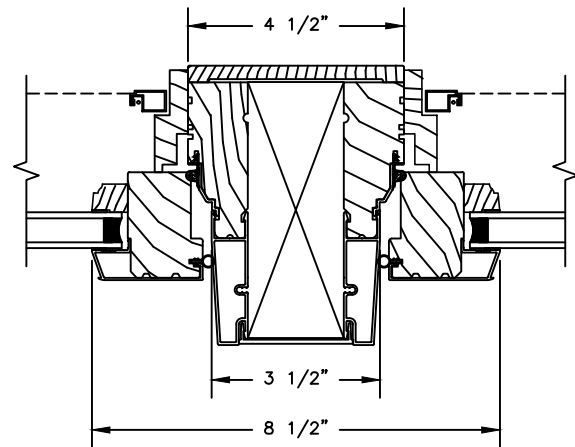
FRAME EXPANDER OPTIONS



VERTICAL MULLION
OPERATOR/STATIONARY



90° MULLION
PUSH OUT/PUSH OUT W/ RETRACTABLE SCREEN
(ONLY USED WITH 4 9/16" JAMB & 3 1/4" FRAME EXPANDER)



VERTICAL MULLION WITH
2" SPREAD MULL
ADDITIONAL WIDTHS INCLUDE: 2 1/2", 4" & 6"

NOTE:
FOR INFORMATION ON STRUCTURAL MULLIONS REFER TO
THE PRODUCT PERFORMANCE AND INFORMATION SECTION.

Pinnacle Select Series

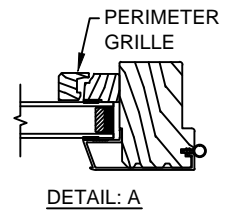
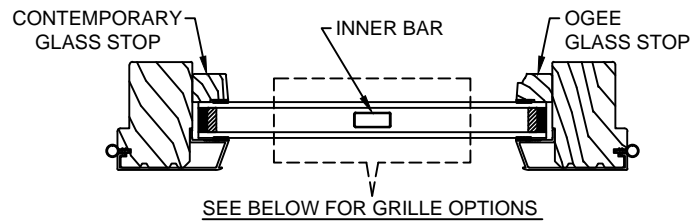
CLAD PUSH-OUT CASEMENT







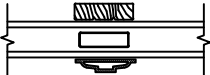











SECTION DETAILS : GLASS STOP & DIVIDED LITE OPTIONS

SCALE: 3" = 1'-0"

AVAILABLE STYLES

-  - PUTTY
-  - TALL PUTTY
-  - OGEE
-  - CONTEMPORARY



	5/8" WDL WITH INNER BAR	7/8" WDL WITH INNERBAR	1 1/4" WDL WITH INNERBAR	2" WDL WITH INNERBAR
STANDARD INSULATING GLASS				
13/16" INNERGRILLE				
3/4" PROFILED INNERGRILLE				
1" PROFILED INNERGRILLE				
7/8" STICK & PERIMETER GRILLE				
1 1/4" STICK & PERIMETER GRILLE				
				
				
				

NOTE:

* ALL WDL OPTIONS CAN BE ORDERED WITH OR WITHOUT INNER BAR

* PERIMETER GRILLES ONLY AVAILABLE IN THE 7/8" AND 1 1/4" OGEE STYLE GLASS STOP (SEE DETAIL: A)


Pinnacle Select Series

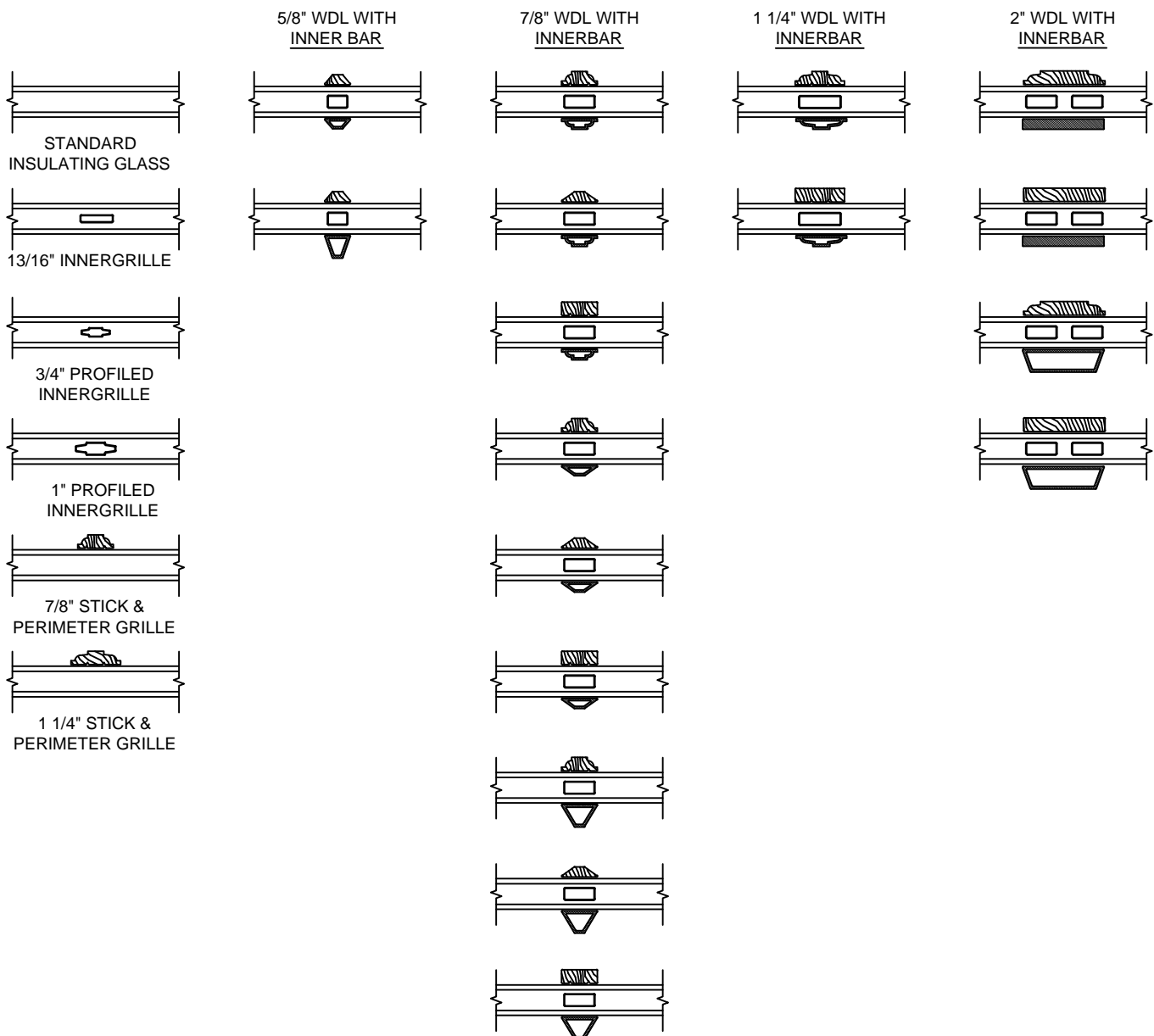
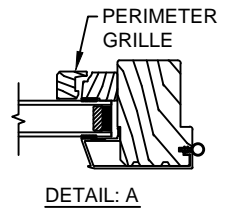
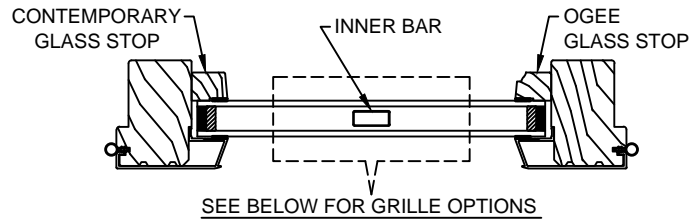
CLAD CASEMENT

SECTION DETAILS : GLASS STOP & DIVIDED LITE OPTIONS

SCALE: 3" = 1'-0"

AVAILABLE STYLES

-  - PUTTY
-  - TALL PUTTY
-  - OGEE
-  - CONTEMPORARY



NOTE:

* ALL WDL OPTIONS CAN BE ORDERED WITH OR WITHOUT INNER BAR

* PERIMETER GRILLES ONLY AVAILABLE IN THE 7/8" AND 1 1/4" OGEE STYLE GLASS STOP (SEE DETAIL: A)

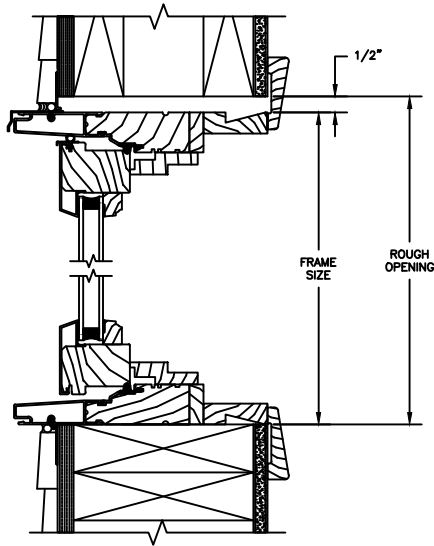
8/30/16

Pinnacle Select Series

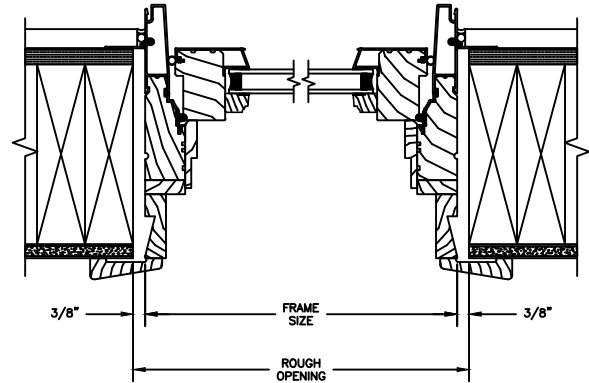
CLAD PUSH-OUT CASEMENT

SECTION DETAILS : CONSTRUCTION

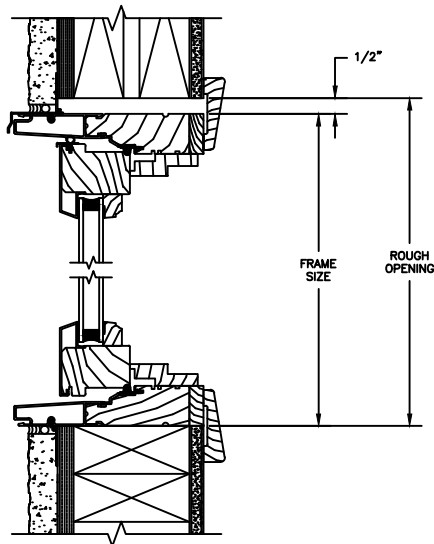
SCALE: 2" = 1'-0"



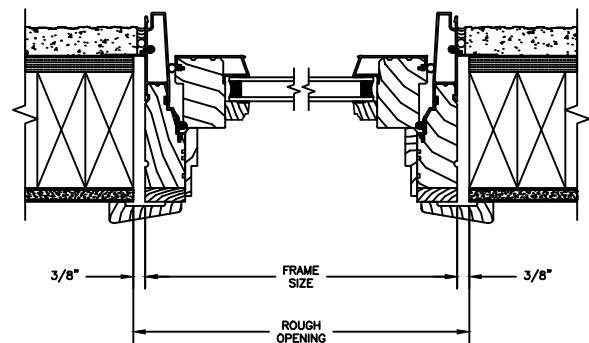
HEAD JAMB & SILL
2 X 6 FRAME WITH SIDING



JAMBS
2 X 6 FRAME WITH SIDING



HEAD JAMB & SILL
2 X 4 FRAME WITH STUCCO



JAMBS
2 X 4 FRAME WITH STUCCO

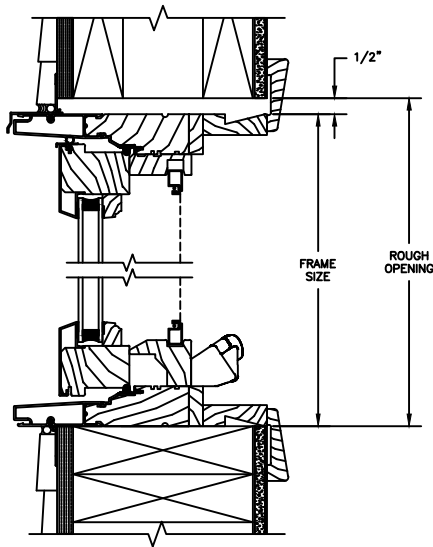
NOTE :
THE ABOVE WALL SECTIONS REPRESENT TYPICAL WALL CONDITIONS, THESE DETAILS ARE NOT INTENDED AS INSTALLATIONS INSTRUCTIONS. PLEASE REFER TO THE INSTALLATION INSTRUCTIONS PROVIDED WITH THE PURCHASED UNITS.

Pinnacle Select Series

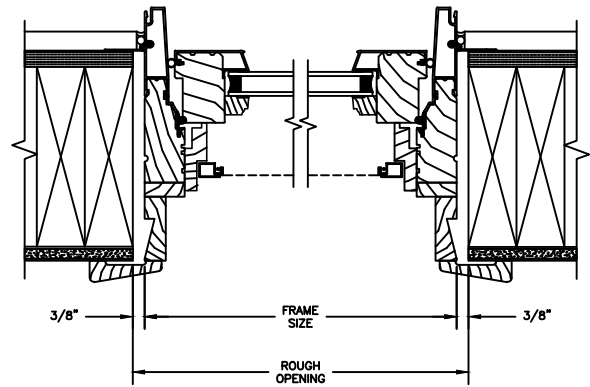
CLAD CASEMENT

SECTION DETAILS : CONSTRUCTION

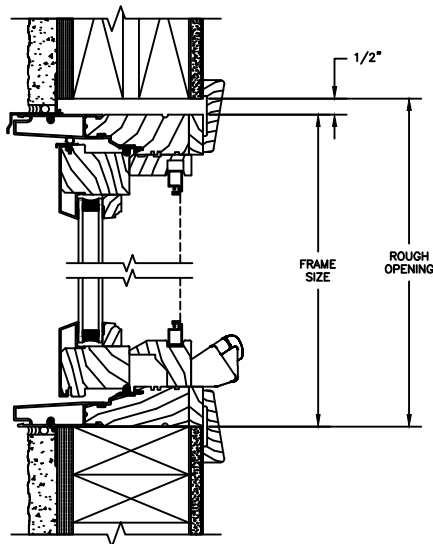
SCALE: 2" = 1'-0"



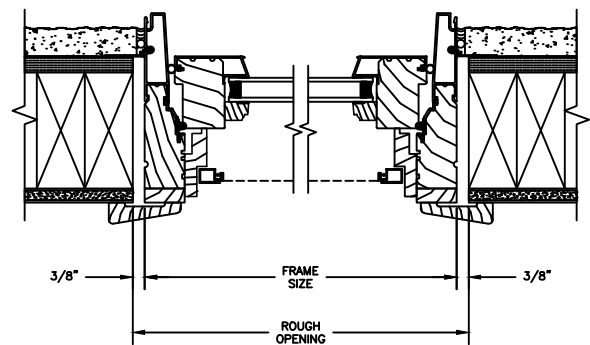
HEAD JAMB & SILL
2 X 6 FRAME WITH SIDING



JAMBS
2 X 6 FRAME WITH SIDING



HEAD JAMB & SILL
2 X 4 FRAME WITH STUCCO



JAMBS
2 X 4 FRAME WITH STUCCO

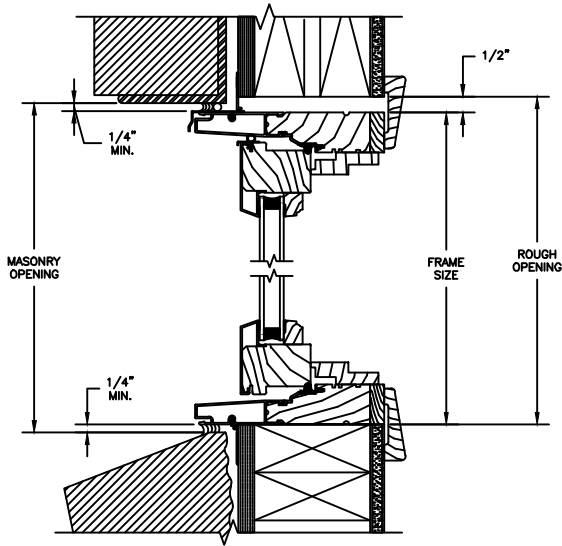
NOTE:
THE ABOVE WALL SECTIONS REPRESENT TYPICAL WALL CONDITIONS, THESE DETAILS ARE NOT INTENDED AS INSTALLATIONS INSTRUCTIONS. PLEASE REFER TO THE INSTALLATION INSTRUCTIONS PROVIDED WITH THE PURCHASED UNITS.

Pinnacle Select Series

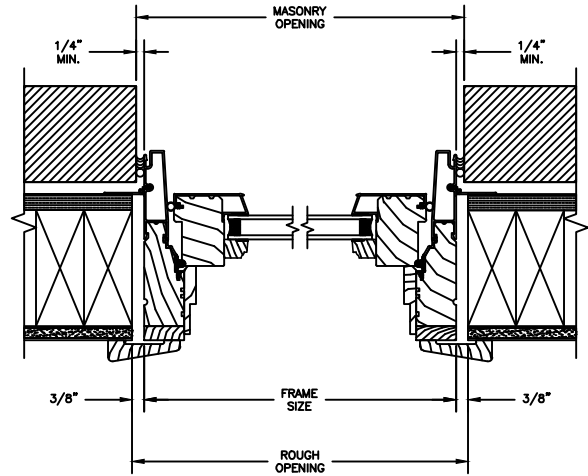
CLAD PUSH-OUT CASEMENT

SECTION DETAILS : CONSTRUCTION

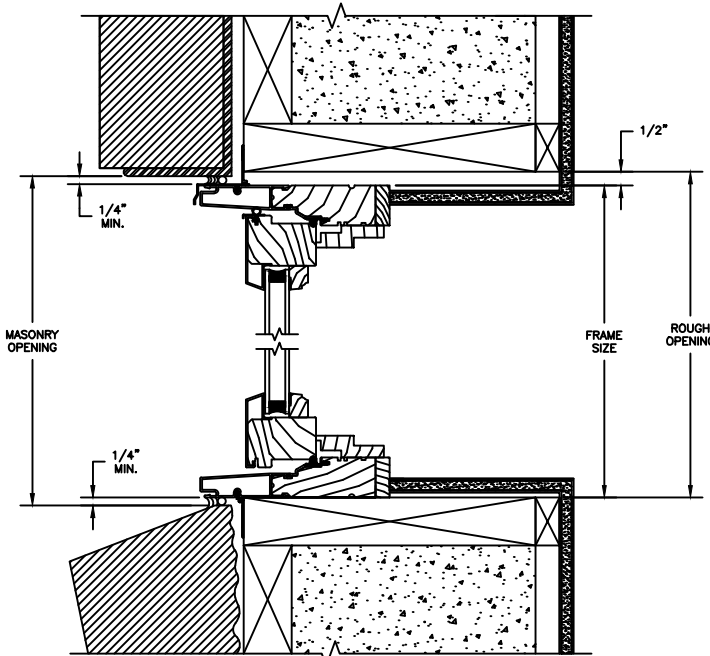
SCALE: 2" = 1'-0"



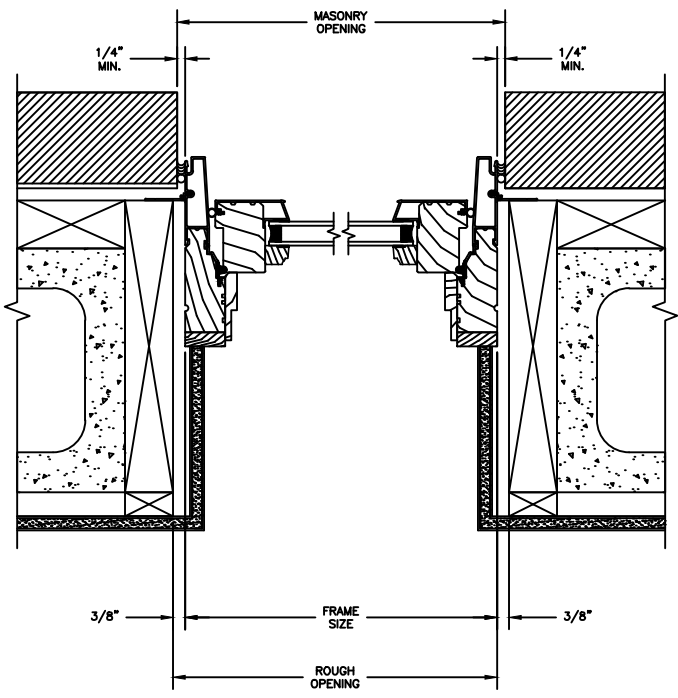
HEAD JAMB & SILL
2 X 4 FRAME WITH BRICK VENEER



JAMBS
2 X 4 FRAME WITH BRICK VENEER



HEAD JAMB & SILL
8" CONCRETE BLOCK WALL
WITH BRICK VENEER

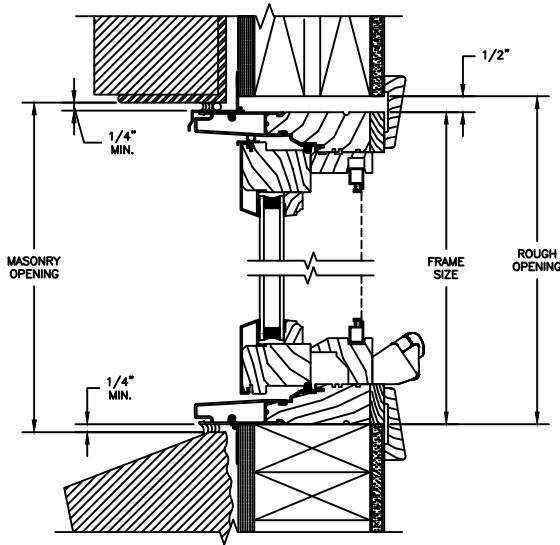


JAMBS
8" CONCRETE BLOCK WALL
WITH BRICK VENEER

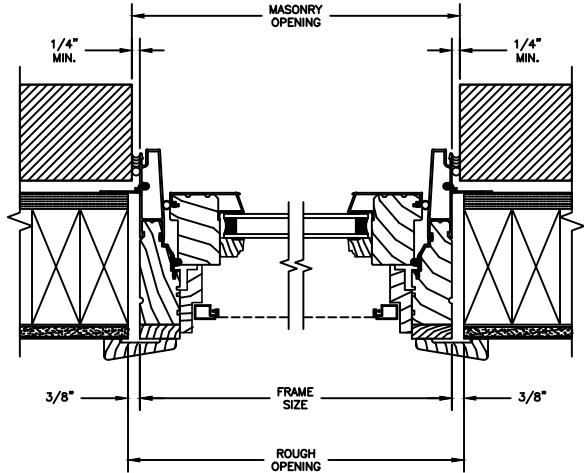
Pinnacle Select Series

CLAD CASEMENT

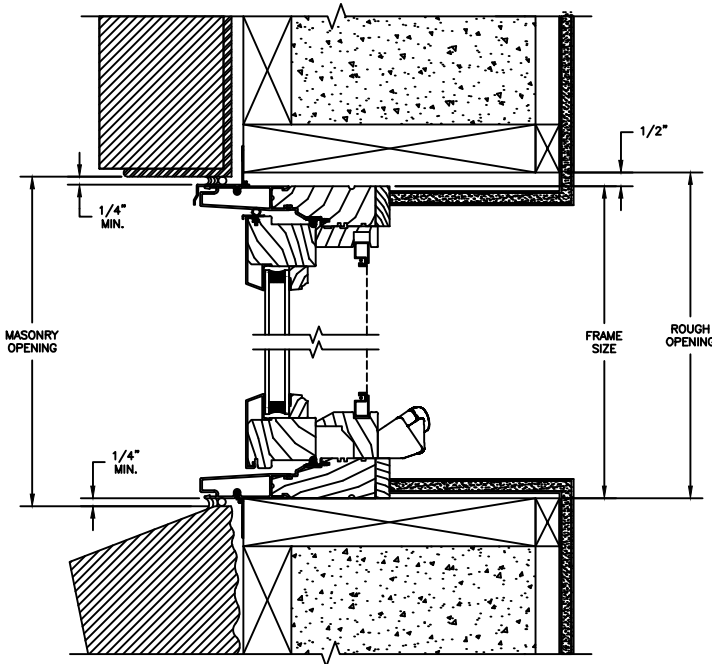
SECTION DETAILS : CONSTRUCTION
SCALE: 2" = 1'-0"



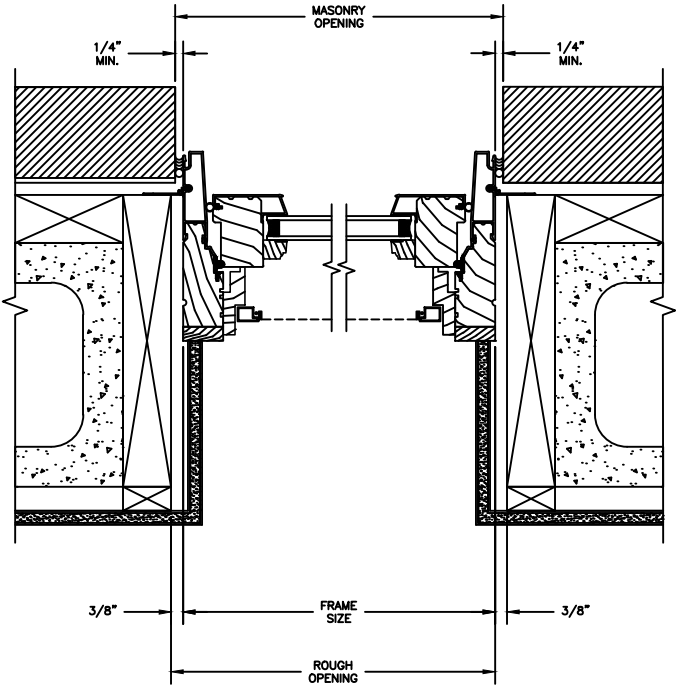
HEAD JAMB & SILL
2 X 4 FRAME WITH BRICK VENEER



JAMBS
2 X 4 FRAME WITH BRICK VENEER



HEAD JAMB & SILL
8" CONCRETE BLOCK WALL
WITH BRICK VENEER



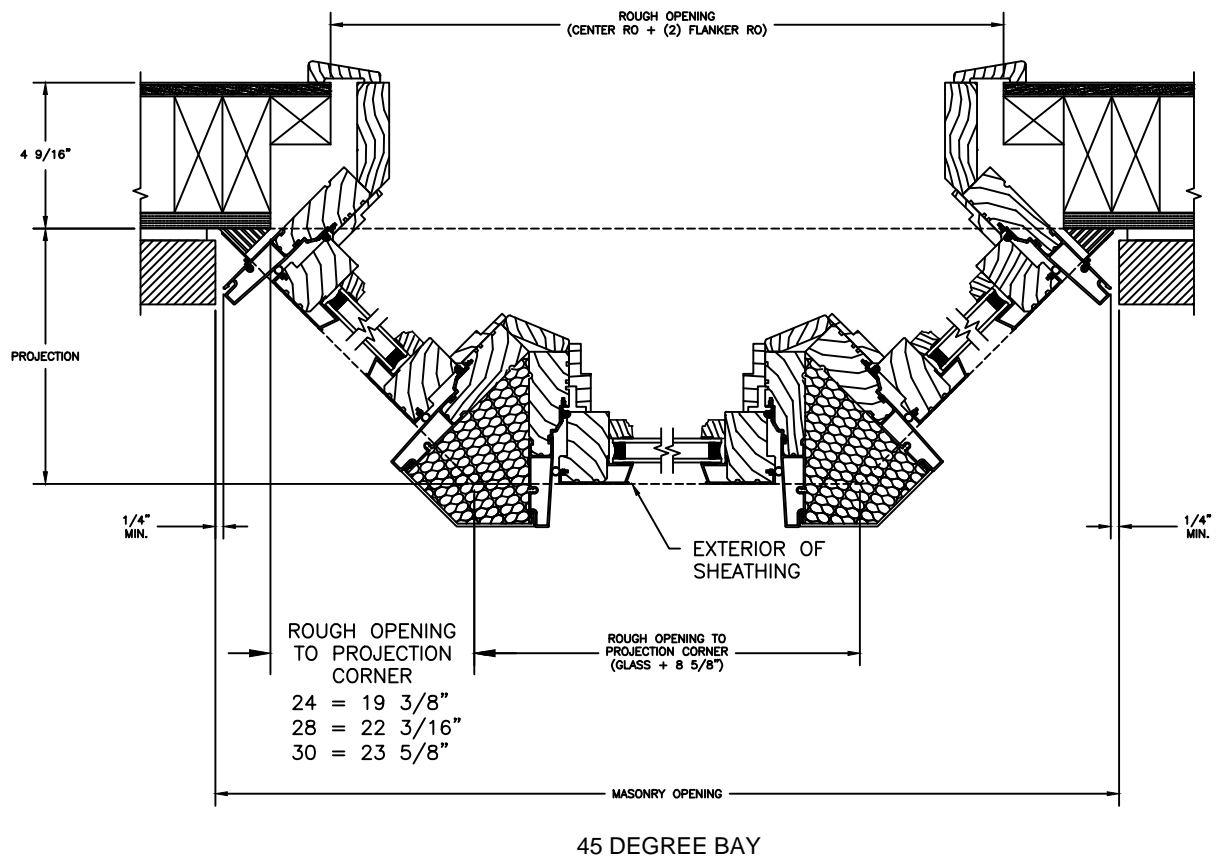
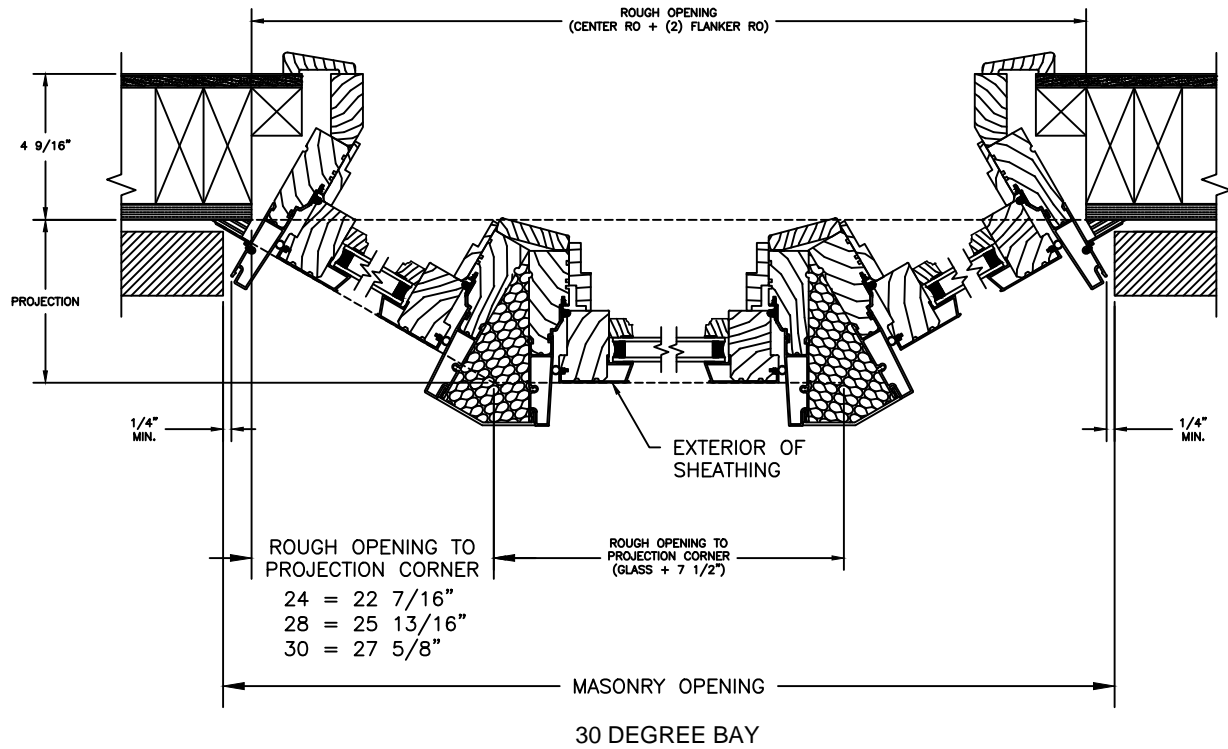
JAMBS
8" CONCRETE BLOCK WALL
WITH BRICK VENEER

Pinnacle Select Series

CLAD PUSH-OUT CASEMENT

SECTION DETAILS : 30/45 DEGREES BAY

SCALE: 2" = 1'-0"



Pinnacle Select Series

CLAD CASEMENT

SECTION DETAILS : 30/45 DEGREES BAY

SCALE: 2" = 1'-0"

