

FRAME ANCHOR REQUIREMENTS TABLE

OPENING TYPE (SUBSTRATE)	FRAME/CLIP/BRICKMOLD/HINGE TO OPENING FASTENER TYPE	MINIMUM EMBED	MINIMUM EDGE DIST.
BRICKMOLD (SIDES & HEAD)			
2X WOOD FRAME OR BUCK (MIN. GR. 3 & G=0.55)	NO. 6 X 1 1/2" SMS (FLAT HEAD)	1 3/8"	1 1/2"
2X WOOD FRAME OR BUCK (MIN. GR. 3 & G=0.55)	10D GALV. FINISH NAILS	1 3/8"	1 1/2"
INSTALLATION CLIP			
2X WOOD FRAME OR BUCK (MIN. GR. 3 & G=0.55)	NO. 8 X 1 1/2" SMS	1 3/8"	1 1/2"
SILL SHEAR SCREWS			
2X WOOD FRAME OR BUCK (MIN. GR. 3 & G=0.55)	NO. 10 SMS OR WOOD SCREW	1 1/4"	3/4"
C-90 CMU/2500 PSI CONCRETE	(1) 3/16" CONCRETE SCREW	1 1/4"	2"
HEAD/JAMB/HINGE SHEAR SCREWS			
2X WOOD FRAME OR BUCK (MIN. GR. 3 & G=0.55)	NO. 10 SMS OR WOOD SCREW	1 1/4"	3/4"

(1) CONCRETE SCREWS SHALL BE EUCO OR ITW RAMASET/RED HEAD TAPCONS, HULTI Kwik-CON II OR POWERS RAWL TAPPER (HARDENED STEEL OR S.S.).

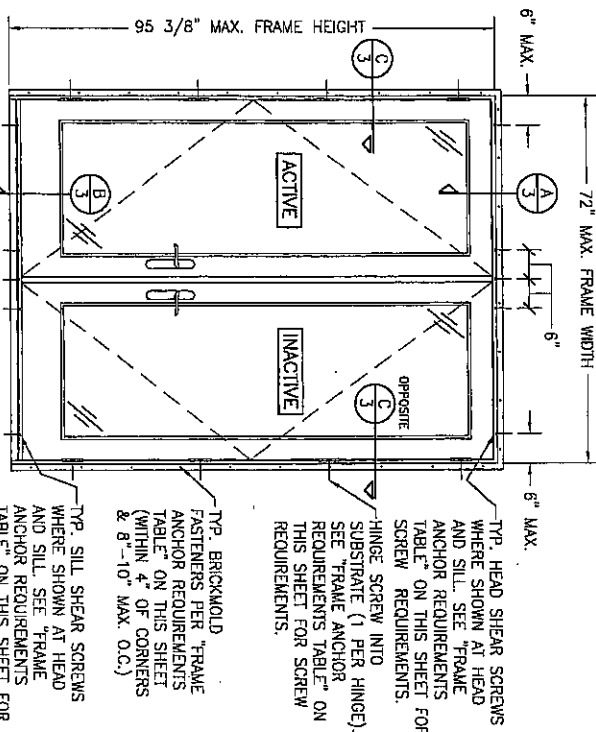
GENERAL NOTES

1. BLOCKING, OPENINGS & BLOCKING FASTENERS MUST BE PROPERLY DESIGNED & INSTALLED TO TRANSFER WIND LOADS TO THE STRUCTURE.
2. ALL ANCHORS SHALL BE IN ACCORDANCE WITH THESE DRAWINGS & MAY NOT VARY UNLESS SPECIFICALLY MENTIONED OTHERWISE.
3. THESE DOOR SYSTEM INSTALLATIONS HAVE BEEN DESIGNED IN ACCORDANCE WITH & MEET THE REQUIREMENTS OF THE 2004 FLORIDA BUILDING CODE (F.B.C.) FOR NON-IMPACT WIND-HIGH VELOCITY HURRICANE ZONES.
4. THESE DOOR SYSTEMS ARE NON-IMPACT RATED & MUST BE SHUTTERED WHERE REQUIRED BY CODE.
5. ALL DOOR SIZES SPECIFIED ARE AS CONTROLLED BY THE TESTED UNITS.
6. TO THE BEST OF OUR KNOWLEDGE, THE DOORS SHOWN HEREIN ARE CERTIFIED AND/OR QUALITY ASSURED BY A FLORIDA STATE APPROVED CERTIFICATION/QA ENTITY & SHALL BE LABELED IN ACCORDANCE WITH THE STATE CODE & CHAPTER 99-12 DEPARTMENT OF COMMUNITY AFFAIRS-FLORIDA BUILDING COMMISSION SPECIFICATIONS, BY LABELING OF THE DOOR. THE MANUFACTURER CONFIRMS THAT THE PRODUCT IS ASSEMBLED IN ACCORDANCE WITH THEIR RESPECTIVE QUALITY ASSURANCE PROGRAMS.
7. ALL FRAME ANCHORS SECURING DOOR FRAME TO PRESSURE TREATED BUCKS OR WOOD FRAMING SHALL BE CAPABLE OF RESISTING CORROSION CAUSED BY THE PRESSURE TREATING CHEMICALS IN THE WOOD.
8. ALL ANCHORS SHALL BE INSTALLED AS SPECIFIED ON THESE DRAWINGS. SPECIFIED EMBEDMENT TO BASE MATERIAL SHALL BE BEYOND WALL FINISH OR STUCCO.
9. THIS DRAWING CERTIFIES INSTALLATION ONLY (NOT MANUFACTURING OR WEATHER PROOFING OF THE DOORS). CERTIFICATION OF THESE DOOR INSTALLATIONS SHALL BE CONSIDERED VOID IF ANY OF THE FOLLOWING APPLY:
 1. IF THE DOORS ARE INSTALLED WITHOUT A PERMIT FROM THE APPLICABLE LOCAL BUILDING DEPARTMENT.
 2. IF THE DOORS ARE INSTALLED BY ANYONE OTHER THAN A LICENSED CONTRACTOR EXPERIENCED WITH WINDOW INSTALLATIONS.
 3. IF THE DOORS INSTALLATION IS NOT INSPECTED EITHER BY THE APPLICABLE LOCAL BUILDING DEPARTMENT INSPECTOR OR ANOTHER PROFESSIONAL LICENSED TO PERFORM INSPECTIONS.
10. THESE INSTALLATIONS ARE BASED ON TESTING & RATIONAL ANALYSIS. TEST REPORTS CONSIDERED WITH THIS CERTIFICATION ARE: REPORTS NO. WIND043-05-08-85975, & WIND043-12-20-72766, REV BY STORK TWIN CITY TESTING CODE.

ALLOWABLE DESIGN PRESSURE			
MAX. DOOR FRAME HEIGHT	MAX. DOOR FRAME WIDTH	ALLOWABLE PRESSURE	
DOUBLE DOORS			
95 3/8"	72"	+/- 30 PSF	
SINGLE OPERABLE DOORS			
95 3/8"	36 3/16"	+/- 30 PSF	
SINGLE FIXED PANEL DOORS			
95 3/8"	48"	+/- 40 PSF	

NOTE: PRESSURES APPLY TO INSTALLATION
ONLY & NOT DOOR ASSEMBLY CONDITIONS

NOTE: PRESSURES APPLY TO INSTALLATION ONLY & NOT DOOR ASSEMBLY CONDITIONS



INTERIOR ELEVATION DOUBLE IN-SWING WOOD DOOR

SCALE: 1/2" = 1'-0"

NOTE:
XX DOOR SHOWN, OX & XO ALSO APPLY. IF
DOUBLE DOOR CONSISTS OF A FIXED PANEL OR
PANEL LOCKED AT THE JAMB SIDE, THE SIDE
ANCHORS SHALL MIMIC THOSE SHOWN WITH THE
SINGLE DOOR OR FIXED PANEL ELEVATION.

TYP. HEAD SHEAR SCREWS
WHERE SHOWN AT HEAD
AND SILL. SEE "FRAME
ANCHOR REQUIREMENTS
TABLE" ON THIS SHEET FOR
SCREW REQUIREMENTS.
HINGE SCREW INTO
SUBSTRATE (1 PER HINGE).
SEE "FRAME ANCHOR
REQUIREMENTS TABLE" ON
THIS SHEET FOR SCREW
REQUIREMENTS.

TYP. BRICKMOLD
FASTENERS PER "FRAME
ANCHOR REQUIREMENTS
TABLE" ON THIS SHEET
(WITHIN 4" OF CORNERS
& 8"-10" MAX. O.C.)

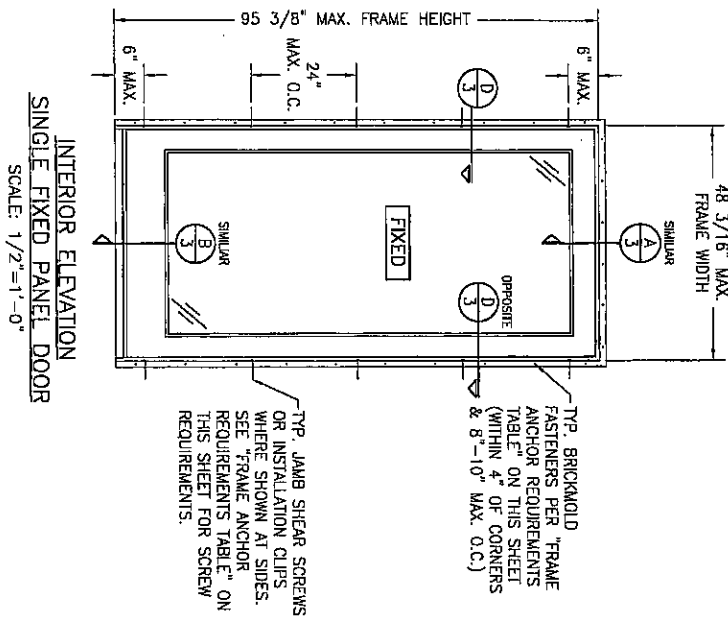
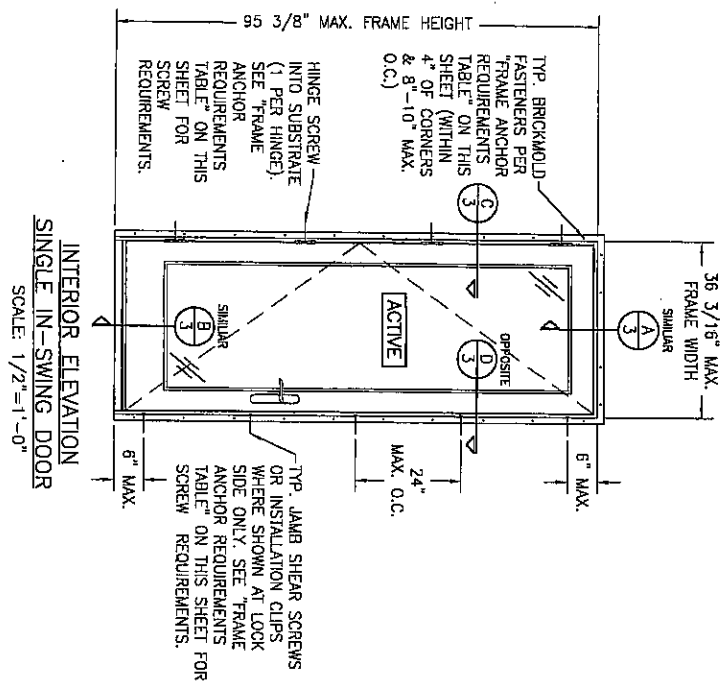
TYP. SILL SHEAR SCREWS
WHERE SHOWN AT HEAD
AND SILL. SEE "FRAME
ANCHOR REQUIREMENTS
TABLE" ON THIS SHEET FOR
SCREW REQUIREMENTS.

AUG 03 2007

NO.	REVISION DESCRIPTION	BY	DATE
1	24		07/25/07

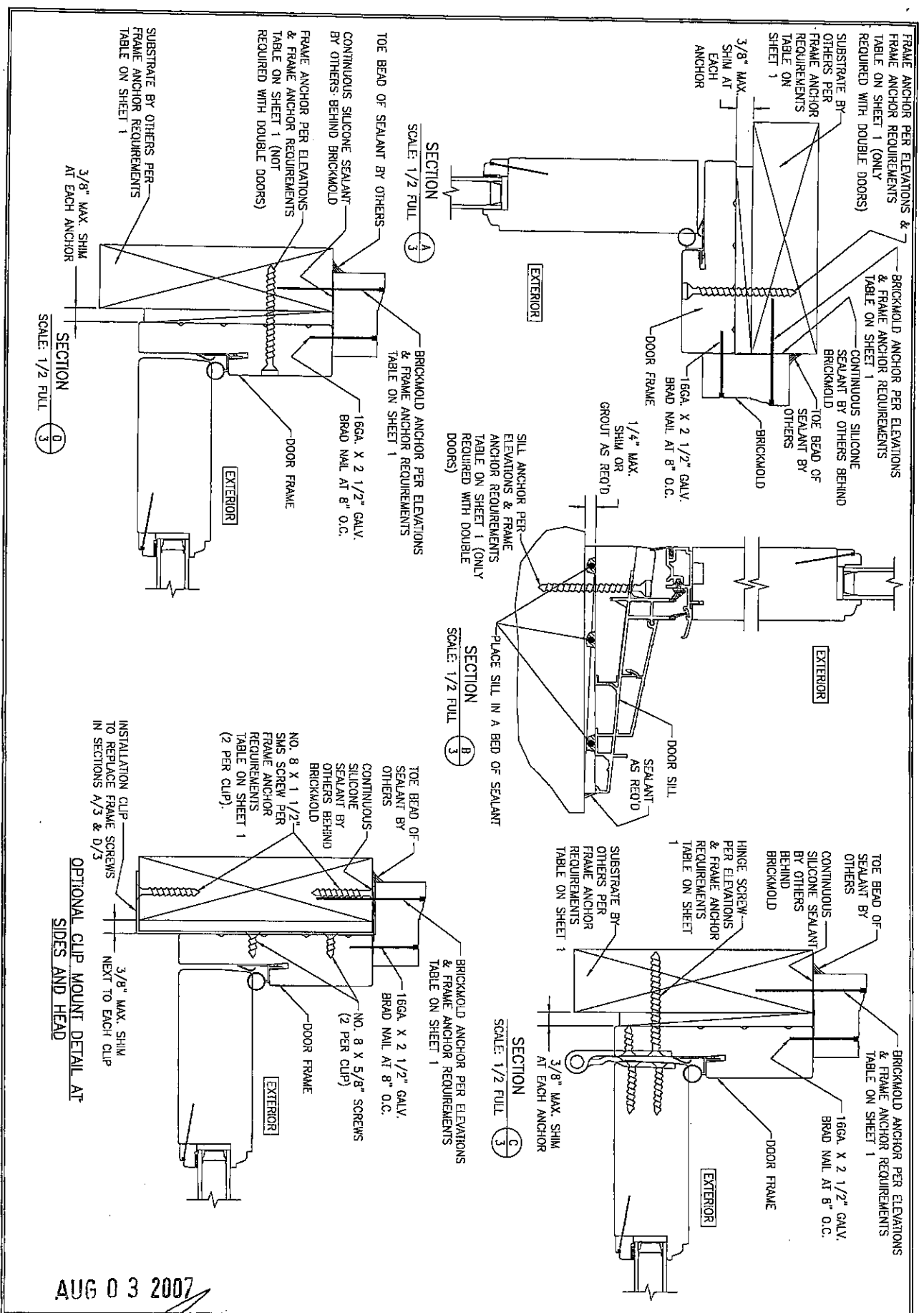
DRAWING TITLE	PRIME IN-SWING NON-IMPACT WOOD DOORS
CONSULTANTS	W. W. SCHAEFER ENGINEERING & CONSULTING, P.A.
8895 N. MILITARY TRAIL, SUITE C-204 PALM BEACH GARDENS, FL 33410 PHONE: 561-725-4902 FAX: 561-725-4903	
MANUFACTURER	WINDSOR WINDOWS & DOORS 900 S. 19TH STREET WEST DES MOINES, IA 50265 800-218-6186

CERTIFICATION	WARREN W. SCHAEFER, P.E. P.E. NO. 44133
DRAWING NO. 1549	
SHEET NO. 1 OF 3	



AUG 03 2007

DRAWING NO.		DRAWING TITLE		NO.		REVISION DESCRIPTION		BY		DATE		PROJECT		CONTRACT NO.	
1549		PRIME IN-SWING NON-IMPACT WOOD DOORS										W.W.S.		W.W.S.	
SHEET NO. 2 OF 3		CONSULTANTS		MANUFACTURER								W.W.S.		W.W.S.	
		W. W. SCHAEFER ENGINEERING & CONSULTING, P.A.		WINDSOR WINDOWS & DOORS								8895 N. MILITARY TRAIL, SUITE C-204		900 S. 19TH STREET	
		8895 N. MILITARY TRAIL, SUITE C-204		PALM BEACH GARDENS, FL 33410								WEST DES MOINES, IA 50265			
		PHONE: 561-775-4902 FAX: 561-775-4903										800-218-6186			



AUG 03 2007

DRAWING TITLE		CONSULTANTS		MANUFACTURER	
PRIME IN-SWING NON-IMPACT WOOD DOORS		W. W. SCHAEFER ENGINEERING & CONSULTING, P.A.		WINDSOR WINDOWS & DOORS	
8885 N. MILITARY TRAIL, SUITE C-204 PALM BEACH GARDENS, FL 33410 PHONE: 561-775-4902 FAX: 561-775-4903		102 MAIN STREET WEST DES MOINES, IA 50265 800-218-6186			
NO.	REVISION	DESCRIPTION	BY	DATE	
1					
2					
DRAWING NO. 1549 SHEET NO. 3 OF 3					