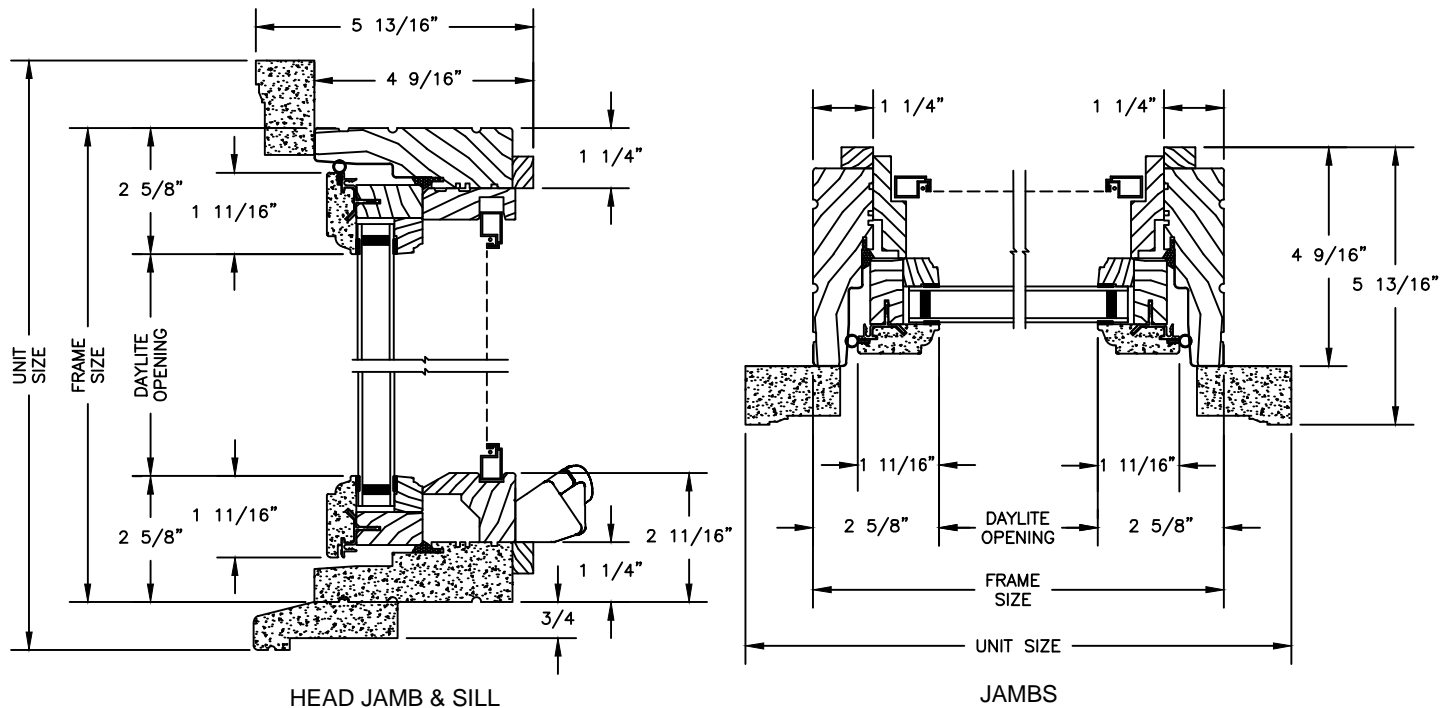


# Legend Series

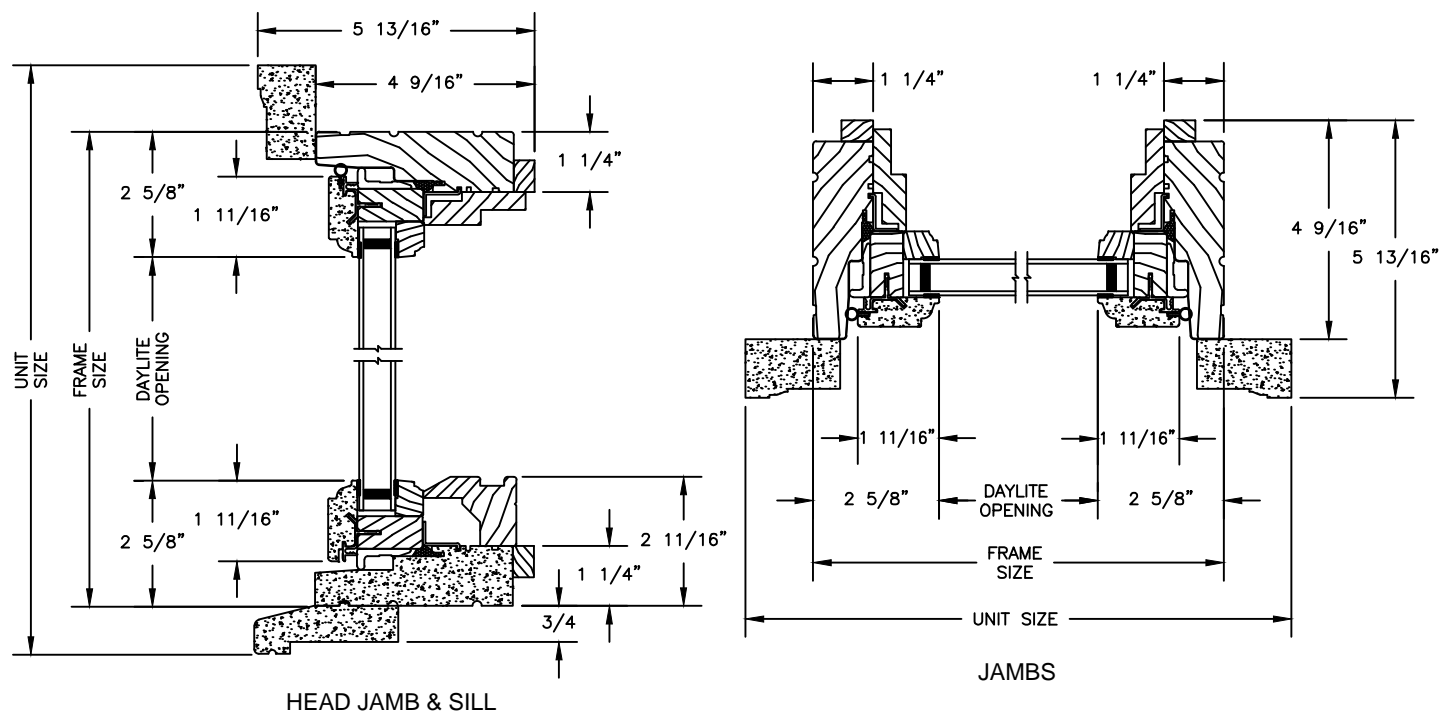
## LEGEND CASEMENT

SECTION DETAILS : OPERATING / STATIONARY  
SCALE: 3" = 1'-0"

OPERATING



STATIONARY

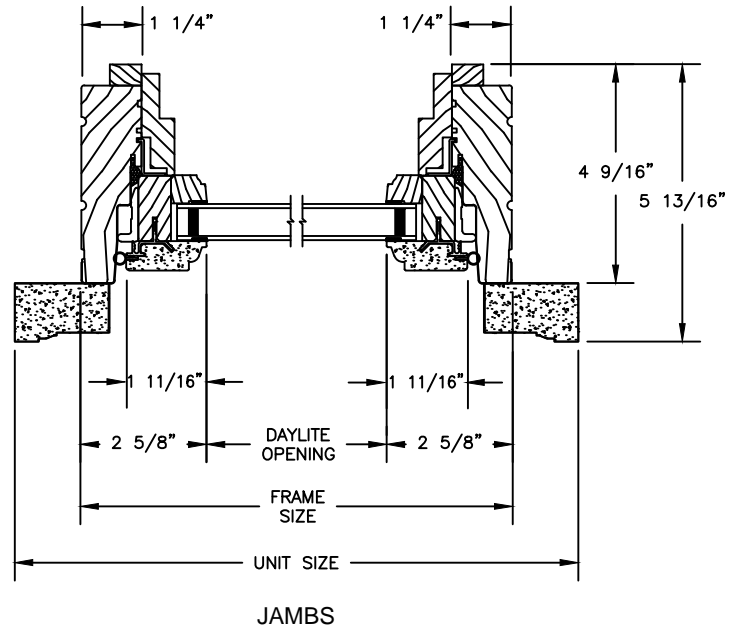
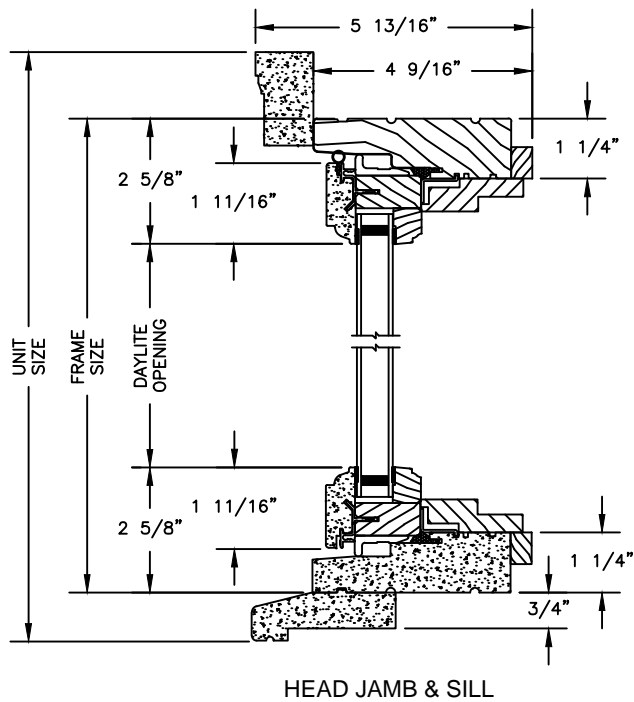


# Legend Series

## LEGEND CASEMENT

ELEVATIONS : PICTURE

SCALE: 3" = 1'-0"

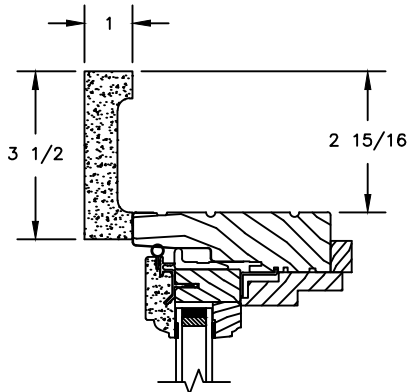


# Legend Series

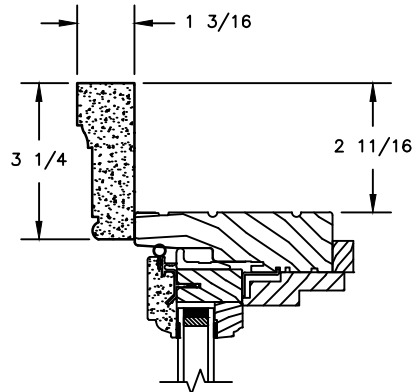
## LEGEND CASEMENT

ELEVATIONS : CASINGS

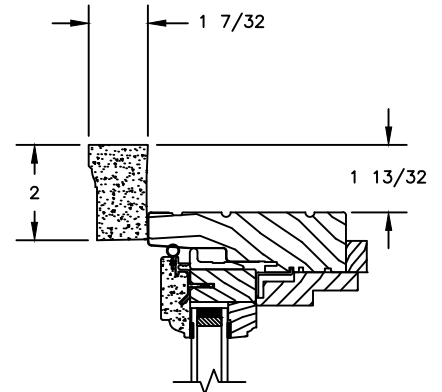
SCALE: 3" = 1'-0"



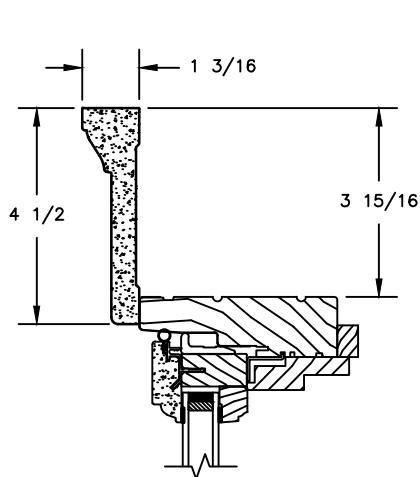
HEAD JAMB WITH  
3 1/2" FLAT CASING



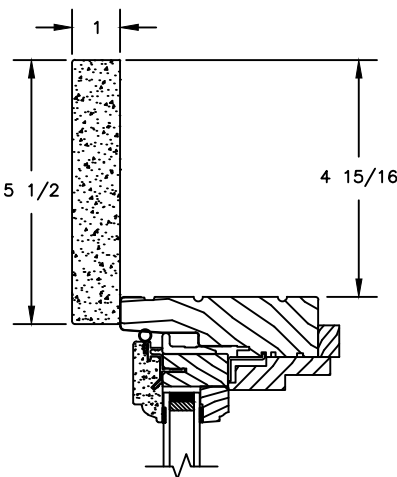
HEAD JAMB WITH  
WILLIAMSBURG BRICKMOULD



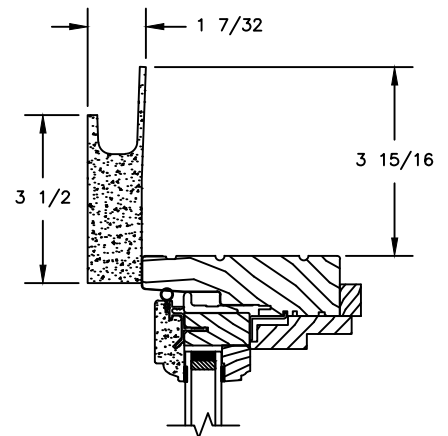
HEAD JAMB WITH  
WM180 BRICKMOULD



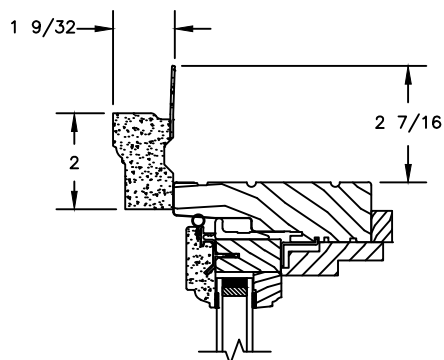
HEAD JAMB WITH  
4 1/2" BACKBAND



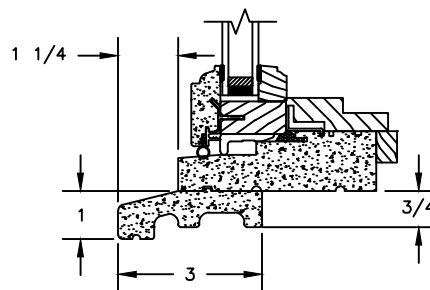
HEAD JAMB WITH  
5 1/2" FLAT CASING



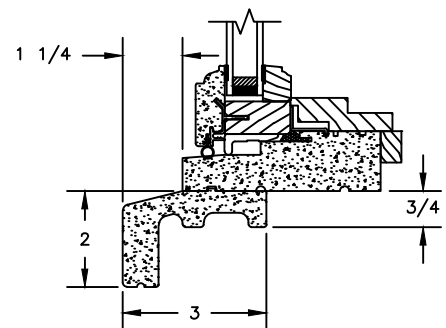
HEAD JAMB WITH  
3 1/2" FLAT CASING WITH J-CHANNEL



HEAD JAMB WITH  
180 FLANGED BRICKMOULD



STANDARD SUBSILL



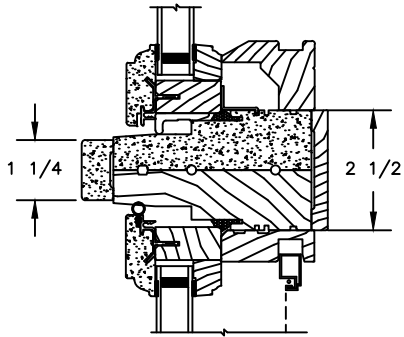
2" SUBSILL

# Legend Series

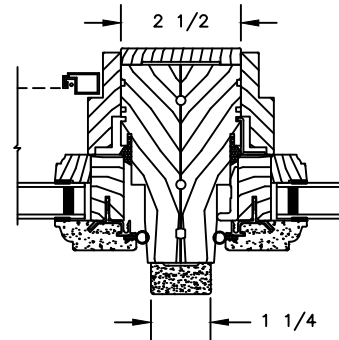
## LEGEND CASEMENT

SECTION DETAILS : MULLIONS

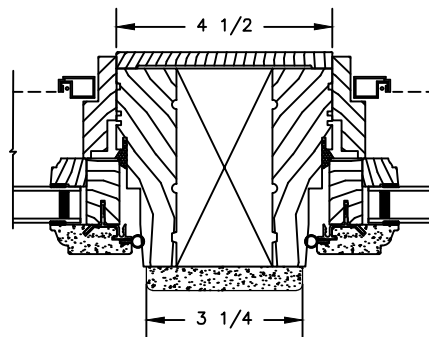
SCALE: 3" = 1'-0"



HORIZONTAL MULLION  
STATIONARY/OPERATOR



VERTICAL MULLION  
OPERATOR/PICTURE



VERTICAL MULLION  
OPERATOR WITH 2" SPREAD MULL

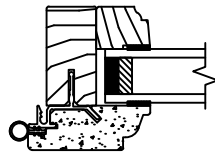
# Legend Series

## LEGEND CASEMENT

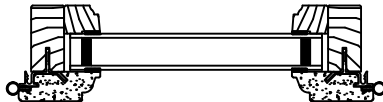
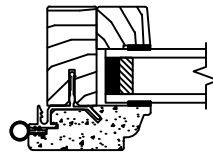
SECTION DETAILS : GLASS STOP & DIVIDED LITE OPTIONS

SCALE: 3" = 1'-0"

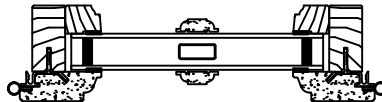
OGEE  
GLASS STOP



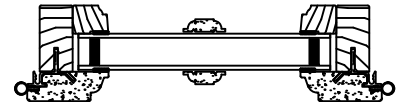
CONTEMPORARY  
GLASS STOP



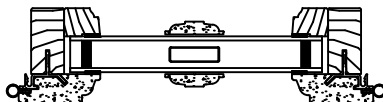
INSULATING GLASS



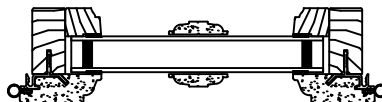
7/8" WDL  
WITH INNERBAR



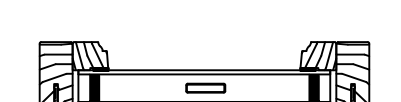
7/8" WDL  
WITHOUT INNERBAR



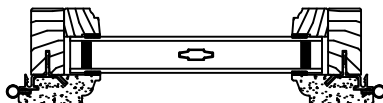
1 1/4" WDL  
WITH INNERBAR



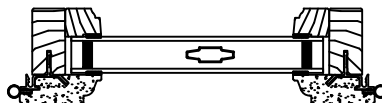
1 1/4" WDL  
WITHOUT INNER BAR



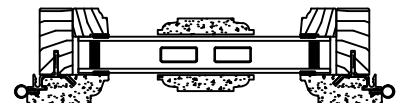
13/16" INNERGRILLE



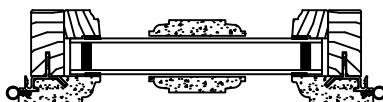
3/4" PROFILED INNERGRILLE



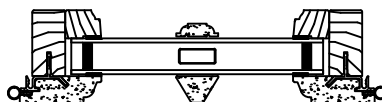
1" PROFILED INNERGRILLE



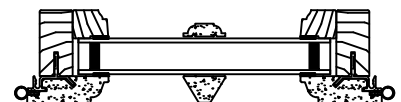
2" SIMULATED CHECK RAIL  
WITH INNERBAR



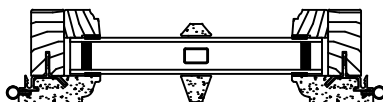
2" SIMULATED CHECK RAIL  
WITHOUT INNERBAR



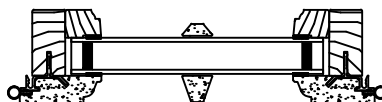
7/8" PUTTY (TALL) GLAZE  
WITH INNERBAR



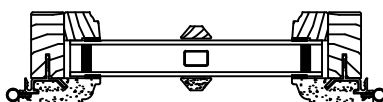
7/8" PUTTY (TALL) GLAZE  
WITHOUT INNERBAR



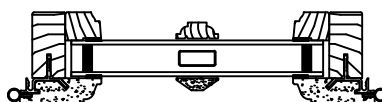
5/8" PUTTY (TALL) GLAZE  
WITH INNERBAR



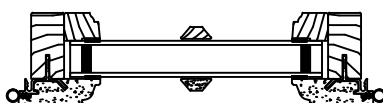
5/8" PUTTY (TALL) GLAZE  
WITHOUT INNERBAR



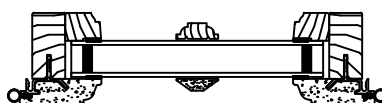
5/8" PUTTY (SHORT) GLAZE  
WITH INNER BAR



7/8" PUTTY (SHORT) GLAZE  
WITH INNER BAR



5/8" PUTTY (SHORT) GLAZE  
WITHOUT INNER BAR



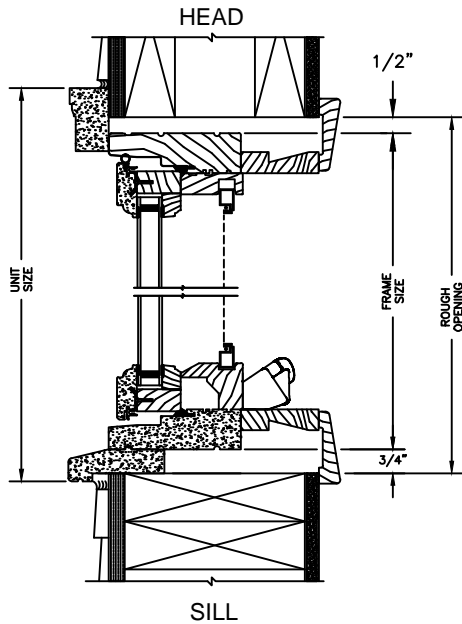
7/8" PUTTY (SHORT) GLAZE  
WITHOUT INNER BAR

# Legend Series

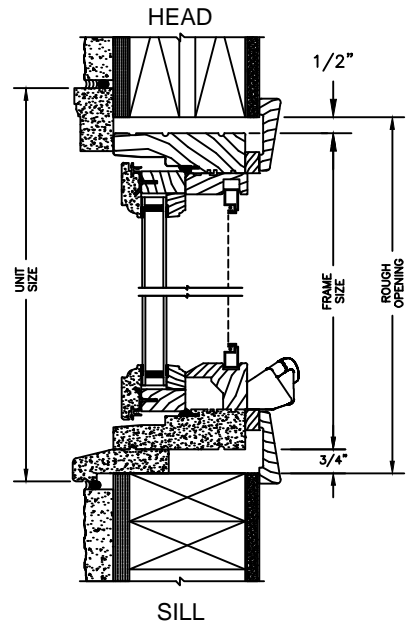
## LEGEND CASEMENT

SECTION DETAILS : CONSTRUCTION

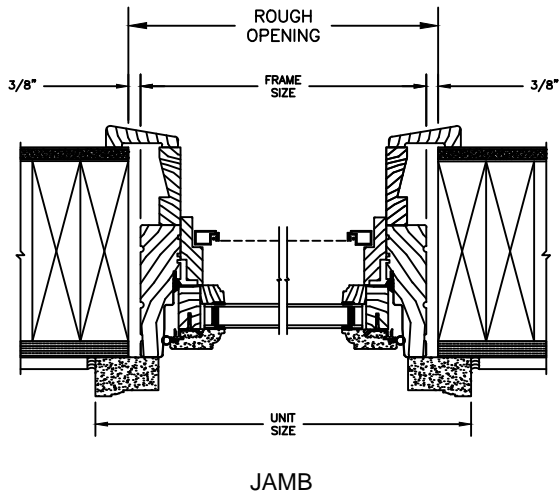
SCALE: 2" = 1'-0"



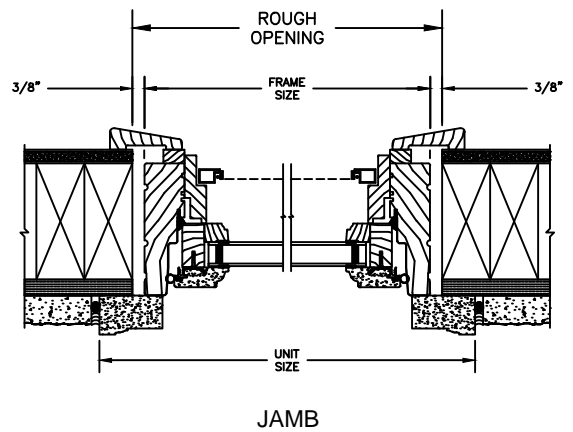
2 X 6 FRAME WITH SIDING



2 X 4 FRAME WITH STUCCO



2 X 6 FRAME WITH SIDING



2 X 4 FRAME WITH STUCCO

NOTE :

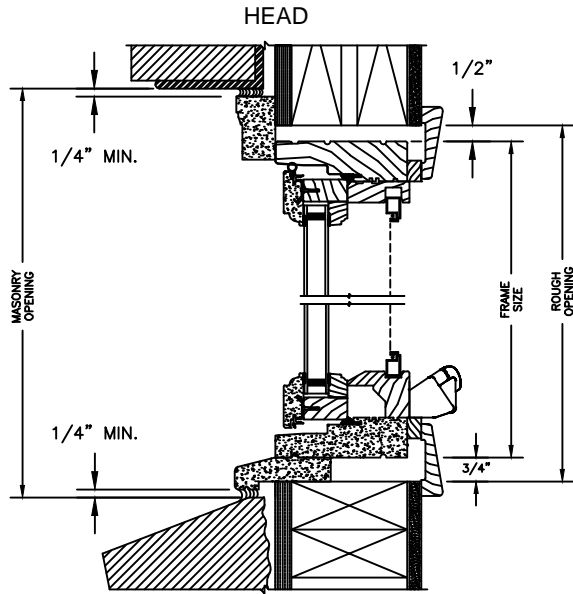
THE ABOVE WALL SECTIONS REPRESENT TYPICAL WALL CONDITIONS, THESE DETAILS ARE NOT INTENDED AS INSTALLATIONS INSTRUCTIONS. PLEASE REFER TO THE INSTALLATION INSTRUCTIONS PROVIDED WITH THE PURCHASED UNITS.

# Legend Series

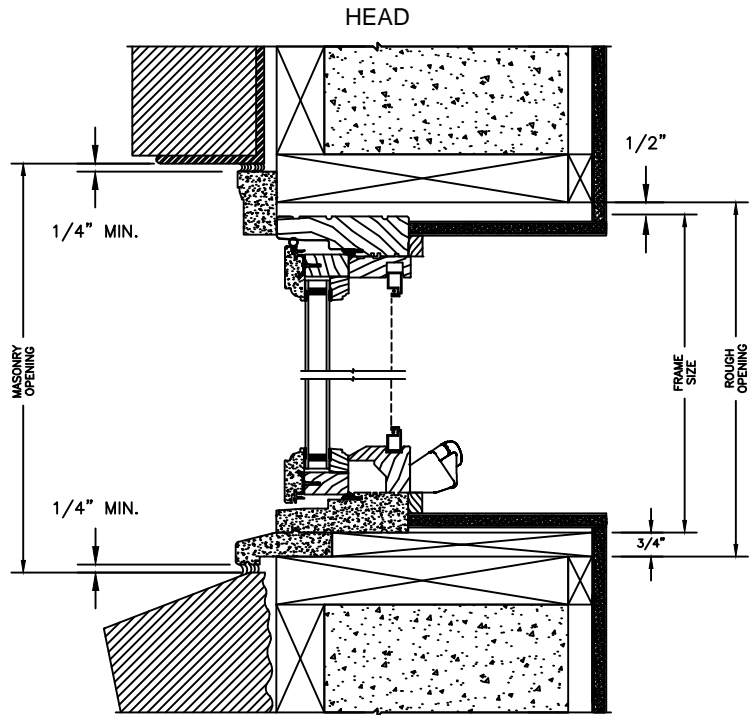
## LEGEND CASEMENT

SECTION DETAILS : CONSTRUCTION

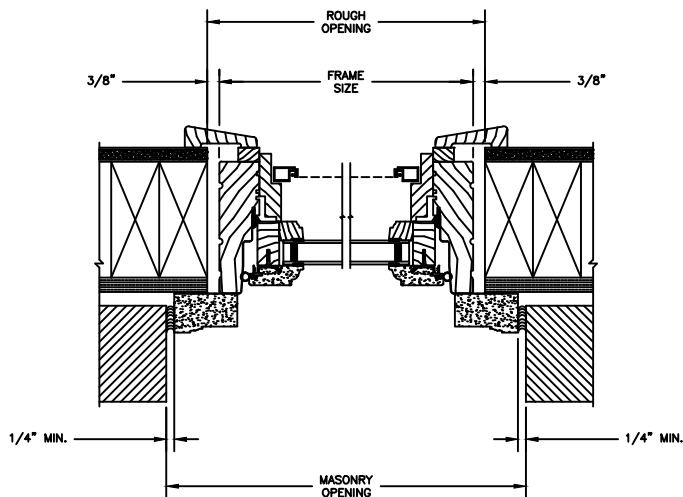
SCALE: 2" = 1'-0"



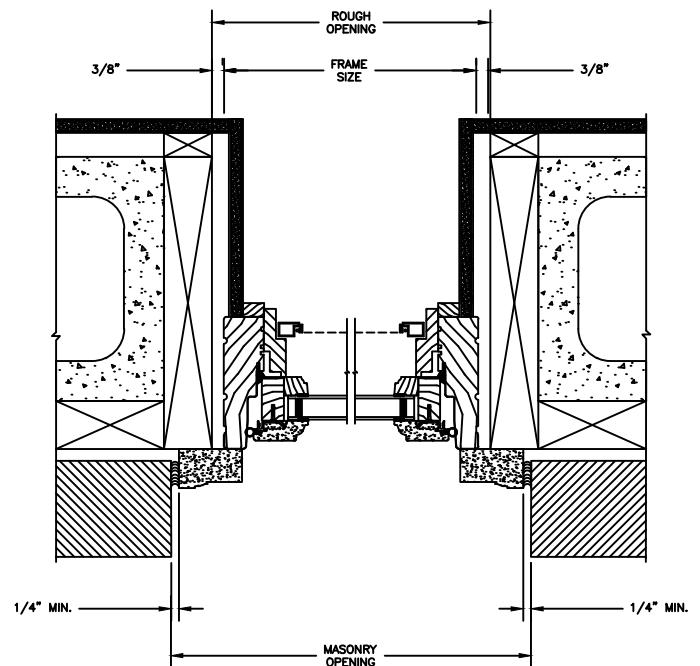
SILL  
2 X 4 FRAME WITH BRICK VENEER



SILL  
8" CONCRETE BLOCK WALL WITH BRICK VENEER



JAMB  
2 X 4 FRAME WITH BRICK VENEER



JAMB  
8" CONCRETE BLOCK WALL WITH BRICK VENEER

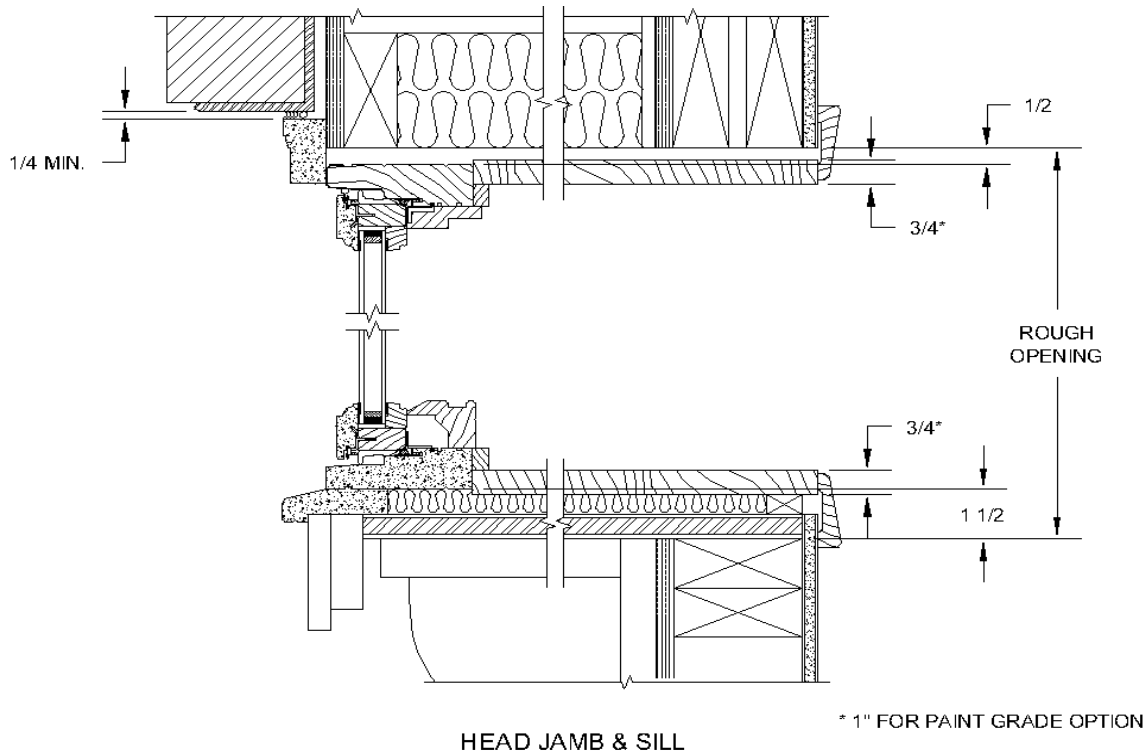
NOTE :

THE ABOVE WALL SECTIONS REPRESENT TYPICAL WALL CONDITIONS, THESE DETAILS ARE NOT INTENDED AS INSTALLATIONS INSTRUCTIONS. PLEASE REFER TO THE INSTALLATION INSTRUCTIONS PROVIDED WITH THE PURCHASED UNITS.

# Legend Series

## CASEMENT BOW / BAY

SECTION DETAILS : BOW / BAY  
NOT TO SCALE



### NOTES:

3/4" plywood platform and trim by others. Rough opening allows for 3/4" thick platform. Support brackets or cable support must be used. Masonry opening measurements represent units with brickmould casing.

Rough and masonry opening heights include head and seat boards. If head and seat boards are not specified, subtract 3/4" for each board. Construction materials supplied by others.

Height Measurements		
BAY & BOW		
Height	R.O. Height*	M.O. Height
20	2-2	2-2 15/16
26	2-8	2-8 15/16
32	3-2	3-2 15/16
38	3-8	3-8 15/16
44	4-2	4-2 15/16
50	4-8	4-8 15/16
56	5-2	5-2 15/16
62	5-8	5-8 15/16
68	6-2	6-2 15/16
74	6-8	6-8 15/16

\*Add 1/4" for 1" Paint Grade Head & Seat Board Option

### How to Specify:

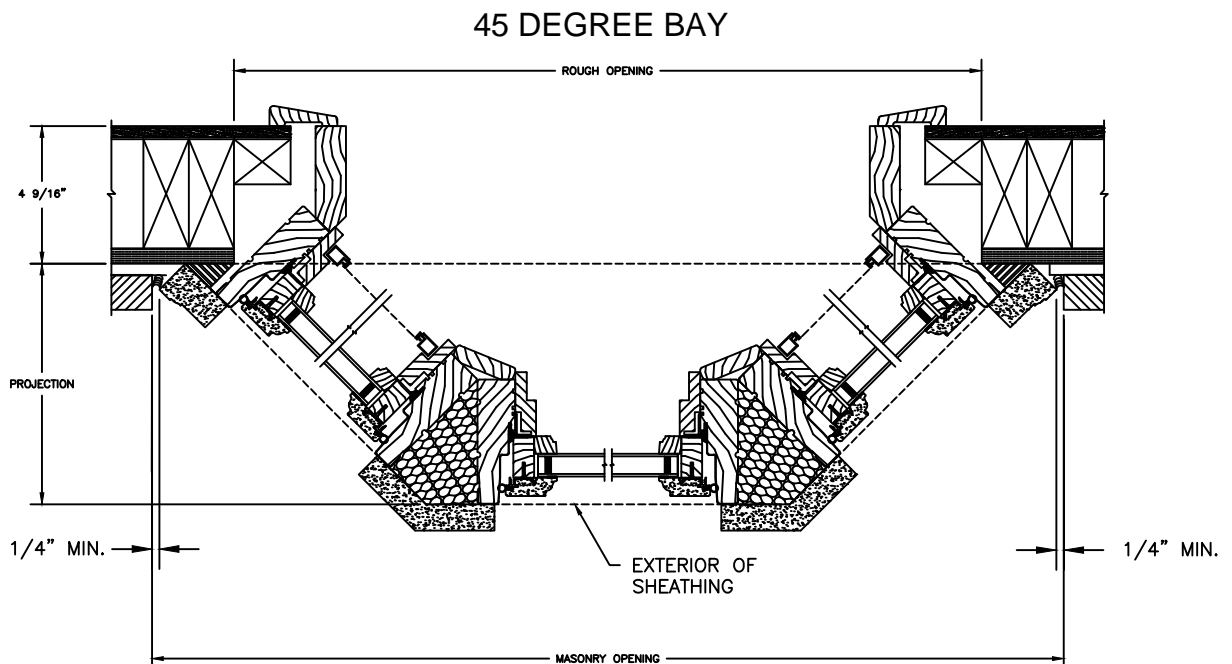
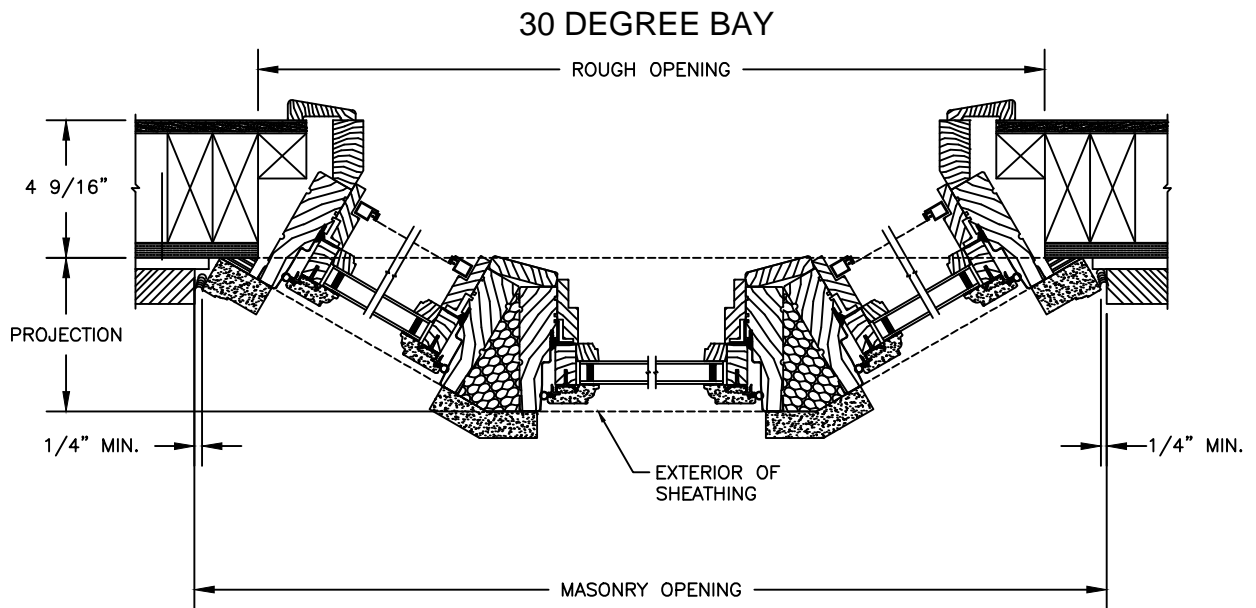
To specify a bay assembly using standard units, components mull configurations must be indicated. For example: a 30 degree assembly with 2044 flankers and a 4444 center unit uses the following product identification: Legend 20-44-2044 LSR (with WM 180 Brickmould). If standard units are not used, indicate unit frame size instead of callout.



# Legend Series

## LEGEND CASEMENT

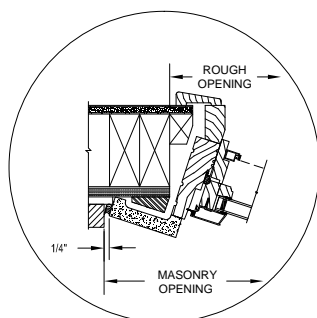
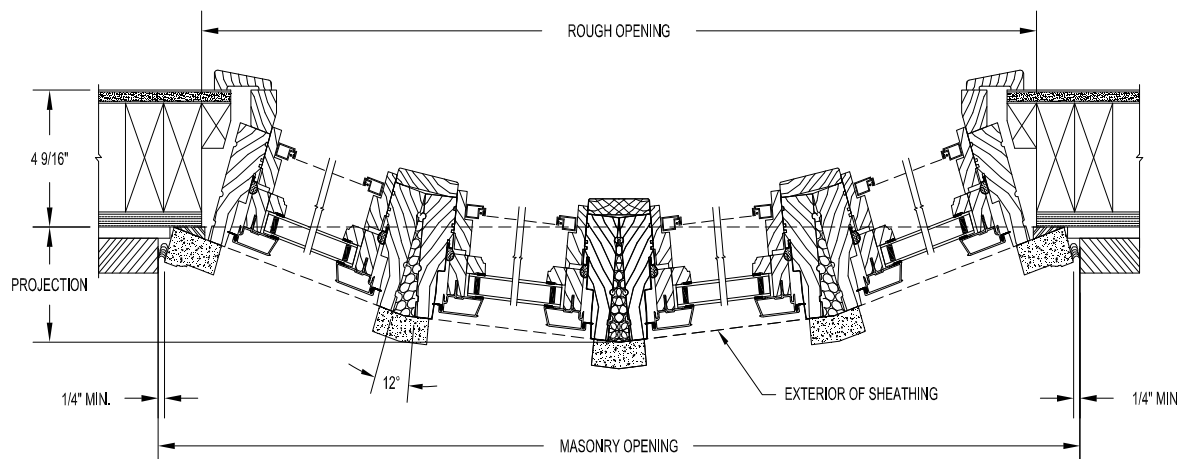
SECTION DETAILS : 30 / 45 DEGREE BAY  
NOT TO SCALE



# Legend Series

## LEGEND CASEMENT BOW

SECTION DETAILS : BOW  
NOT TO SCALE



BOW WITH OPTIONAL  
FLAT CASING

### How to Specify:

For standard bow assembly, note the product type, size identification/s, configuration, number of units wide and operation/s. Example: 2044-4 LSSR. For custom sized units and assemblies use the individual unit rough opening size in place of the standard size identifications/s. To obtain more information on custom bows please contact your Windsor representative.

### NOTE:

Construction materials supplied by others.

\* Projection is defined as the dimension from the back of the Brickmould to the exterior of the wall sheathing.

Width Measurements With WM 180					
4-WIDE					
Width	Outside Radius	Unit Width	M.O. Width	R.O. Width	Projection
14	7-5 7/8	6-4	6-4 1/2	6-1 1/8	8 1/8
16	8-3 5/8	6-11 3/4	7-0 1/4	6-8 7/8	8 7/8
20	9-10 5/8	8-3 3/8	8-3 7/8	8-0 1/2	10 5/8
24	11-5 3/4	9-7	9-7 1/2	9-4	12 5/8
26	12-3 3/8	10-2 3/4	10-3 1/4	9-11 3/4	13 1/8
32	14-8	12-2	12-2 1/2	11-11 1/4	15 1/2
5-WIDE					
14	7-7 3/4	7-9	7-9 1/2	7-5 3/4	12
16	8-5 3/8	8-6 5/8	8-7 1/8	8-3 1/4	13 1/4
20	10-0 1/4	10-1 3/4	10-2 1/4	9-10 1/2	15 3/4
24	11-7 3/8	11-8 7/8	11-9 3/8	11-5 7/8	18 1/8

Width Measurements With Flat Casing					
4-WIDE					
Width	Outside Radius	Unit Width	M.O. Width	R.O. Width	Projection
14	7-5 7/8	6-6 13/16	6-7 5/16	6-0 3/4	8 9/16
16	8-3 5/8	7-2 9/16	7-3 1/16	6-8 1/2	9 3/8
20	9-10 5/8	8-6 1/8	8-6 5/8	8-0 1/8	11 1/16
24	11-5 3/4	9-9 11/16	9-10 3/16	9-3 11/16	12 11/16
26	12-3 3/8	10-5 1/2	10-6	9-11 7/16	13 9/16
32	14-8	12-4 13/16	12-5 5/16	11-10 13/16	16
5-WIDE					
14	7-7 3/4	7-11 5/8	8-0 1/8	7-5 1/2	12 5/8
16	8-5 3/8	8-9 3/16	8-9 11/16	8-3 1/16	13 13/16
20	10-0 1/4	10-4 5/16	10-4 13/16	9-10 1/16	16 5/16
24	11-7 3/8	11-11 7/16	11-11 15/16	11-5 3/16	18 3/4