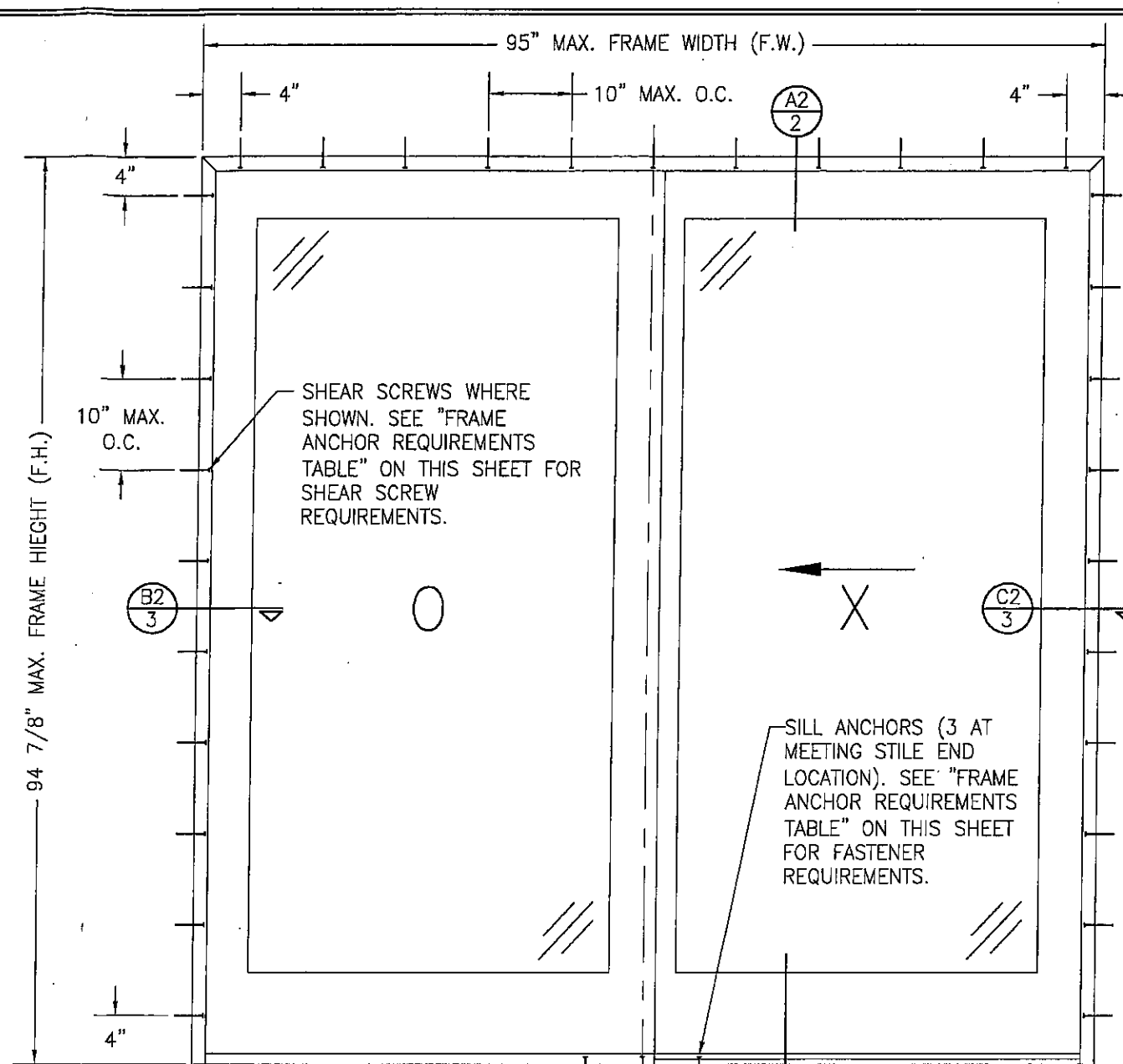


SILL ANCHORS (3 AT MEETING STILE END LOCATION). SEE "FRAME ANCHOR REQUIREMENTS TABLE" ON THIS SHEET FOR FASTENER REQUIREMENTS.

**EXTERIOR ELEVATION:
2 PANEL SLIDING DOOR
(FIN MOUNT CONDITION)**
SCALE: 3/4"=1'-0"

ADHERE SILL TO SUBSTRATE PER SECTION A1/2



ADHERE SILL TO SUBSTRATE PER SECTION A1/2

**EXTERIOR ELEVATION:
2 PANEL SLIDING DOOR
(SHEAR SCREW MOUNT CONDITION)**
SCALE: 3/4"=1'-0"

GENERAL NOTES

1. THESE DOOR SYSTEMS HAVE BEEN TESTED, ANALYZED & APPROVED FOR DESIGN PRESSURES NOT TO EXCEED THOSE SHOWN IN THE "ALLOWABLE DESIGN PRESSURE" TABLE.
2. BUCKING, OPENINGS & BUCKING FASTENERS MUST BE PROPERLY DESIGNED & INSTALLED TO TRANSFER WIND LOADS TO THE STRUCTURE.
3. ALL ANCHORS SHALL BE IN ACCORDANCE WITH THESE DRAWINGS & MAY NOT VARY UNLESS SPECIFICALLY MENTIONED ON THE DRAWINGS.
4. THESE DOOR SYSTEM INSTALLATIONS HAVE BEEN DESIGNED IN ACCORDANCE WITH & MEET THE REQUIREMENTS OF THE 2004 FLORIDA BUILDING CODE (F.B.C.) FOR NON-HVHZ (HIGH VELOCITY HURRICANE ZONES).
5. THESE DOOR SYSTEMS ARE NON-IMPACT RATED & MUST BE SHUTTERED WHERE REQUIRED BY CODE.
6. ALL DOOR SIZES SPECIFIED AS ALLOWABLE IN THE "ALLOWABLE SIZE VS. PRESSURE TABLE" ARE AS CONTROLLED BY THE TESTED UNITS.
7. TO THE BEST OF OUR KNOWLEDGE, THE DOORS SHOWN HEREIN ARE CERTIFIED AND/OR QUALITY ASSURED BY A FLORIDA STATE APPROVED CERTIFICATION/QA ENTITY & SHALL BE LABELED IN ACCORDANCE WITH THE STATE CODE & CHAPTER 9B-72 DEPARTMENT OF COMMUNITY AFFAIRS-FLORIDA BUILDING COMMISSION SPECIFICATIONS. BY LABELING THE DOOR, THE MANUFACTURER CONFIRMS THAT THE PRODUCT IS ASSEMBLED IN ACCORDANCE WITH THEIR RESPECTIVE QA & TESTING REPORTS.
8. ALL FRAME ANCHORS SECURING DOOR FRAME TO PRESSURE TREATED BUCKS OR WOOD FRAMING SHALL BE CAPABLE OF RESISTING CORROSION CAUSED BY THE PRESSURE TREATING CHEMICALS IN THE WOOD.

**ALLOWABLE SIZE VS.
PRESSURE TABLE**

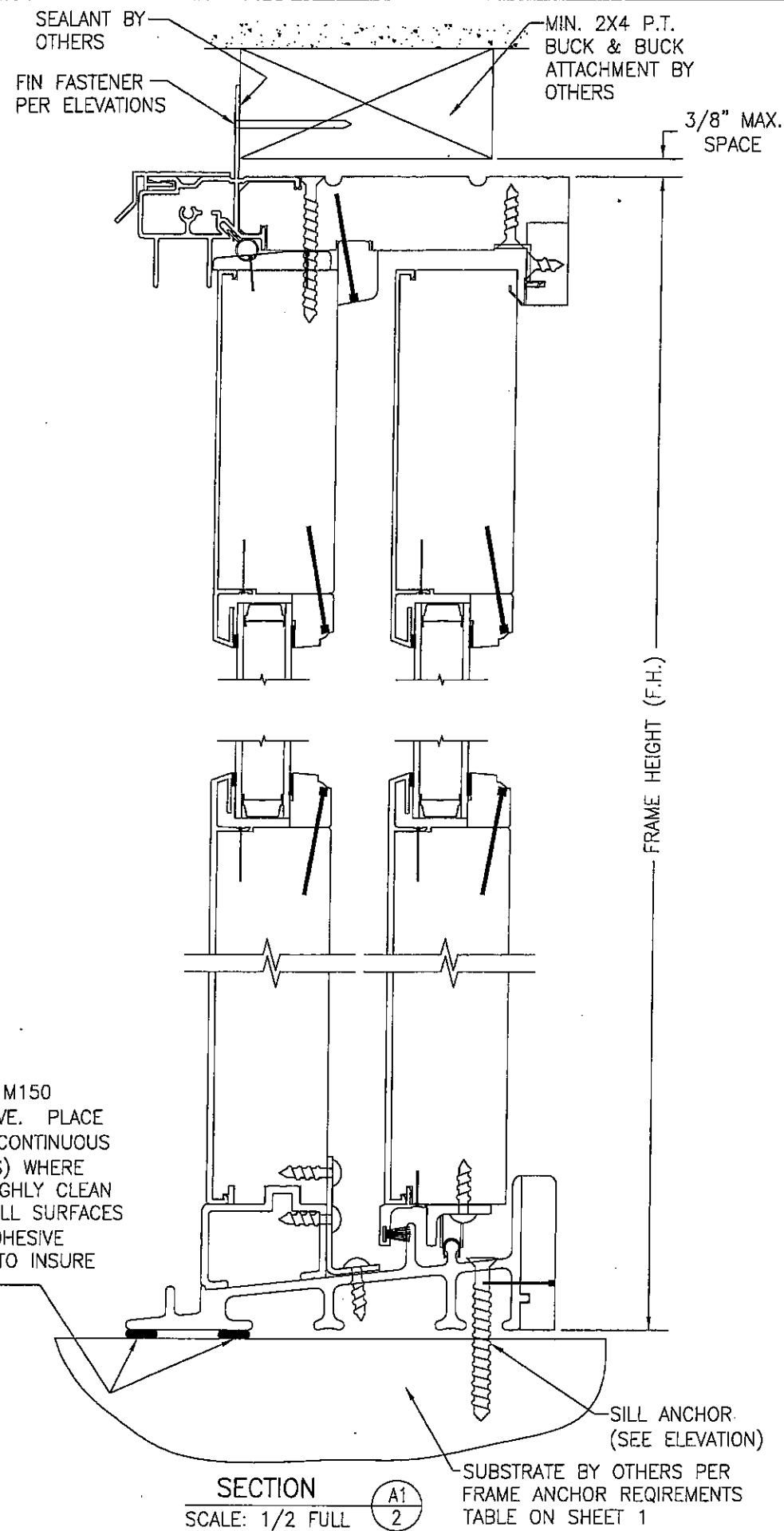
MAX. FRAME WIDTH (IN.)	MAX. FRAME HEIGHT (IN.)	ALLOWABLE PRESSURE (POS & NEG PSF)
71	95 1/2	50
95	95 1/2	40

9. ALL ANCHORS SHALL BE INSTALLED AS SPECIFIED ON THESE DRAWINGS. SPECIFIED EMBEDMENT TO BASE MATERIAL SHALL BE BEYOND WALL FINISH OR STUCCO.
10. CERTIFICATION OF THESE DOORS SHALL BE CONSIDERED VOID IF ANY OF THE FOLLOWING APPLY:
 1. IF THESE DOORS ARE INSTALLED BY ANYONE OTHER THAN A LICENSED CONTRACTOR EXPERIENCED WITH DOOR INSTALLATIONS.
 2. IF THE DOORS ARE INSTALLED WITHOUT A PERMIT FROM THE APPLICABLE LOCAL BUILDING DEPARTMENT.
 3. IF THE DOOR INSTALLATION IS NOT INSPECTED EITHER BY THE APPLICABLE LOCAL BUILDING DEPARTMENT INSPECTOR OR ANOTHER PROFESSIONAL LICENSED TO PERFORM INSPECTIONS.

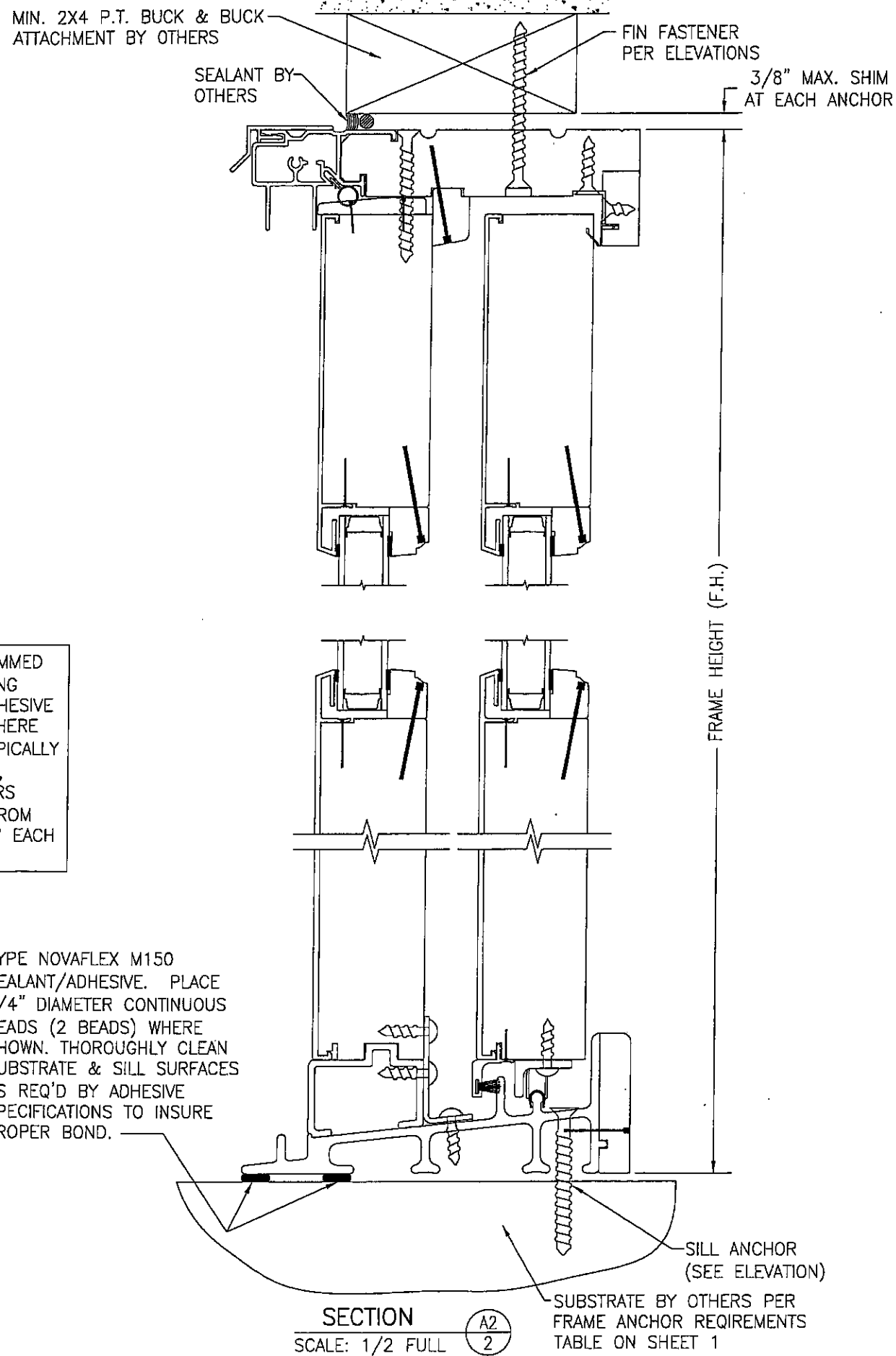
FRAME ANCHOR REQUIREMENTS TABLE

FIN SCREWS			
OPENING TYPE (SUBSTRATE)	JAMB TO OPENING FASTENER TYPE	MINIMUM EMBED	MINIMUM EDGE DIST.
2X_ WOOD FRAME OR BUCK	1 3/4" X 11 GA. ROOFING NAILS	1 1/2"	1/2"
2X_ WOOD FRAME OR BUCK	NO. 8 X 1 1/2" SMS	1 1/4"	1/2"
SHEAR SCREWS			
2X_ WOOD FRAME OR BUCK	NO. 8 SMS SCREW	1 1/4"	3/4"
CMU/CONCRETE	(1) 1/4" CONCRETE SCREW	1 1/4"	2"
(1) CONCRETE SCREWS SHALL BE ELCO OR ITW RAMSET/RED HEAD TAPCONS, HILTI KWIK-CON II OR POWERS RAWL TAPPER (HARDENED STEEL OR S.S.).			

DRAWN BY: W.R.M.		CHECKED BY: W.W.S.	
PLOT: 1-16		DATE: 07/06/06	
DATE	BY	REVISION	DESCRIPTION
DRAWING TITLE: PINNACLE ALUMINUM CLAD NON-IMPACT SLIDING GLASS DOOR		MANUFACTURER: WINDSOR WINDOWS & DOORS	
CONSULTANTS: W. W. SCHAEFER ENGINEERING & CONSULTING, P.A.		900 S. 19TH STREET	
8895 N. MILITARY TRAIL, SUITE C-204		WEST DES MOINES, IA 50265	
PALM BEACH GARDENS, FL 33410		800-218-6186	
PHONE: 561-775-4902		FAX: 561-775-4903	
CERTIFICATION: JUL 14 2006		DRAWING NO. 1484	
WARREN W. SCHAEFER, P.E.		SHEET NO. 1 OF 3	
P.E. NO. 44135			

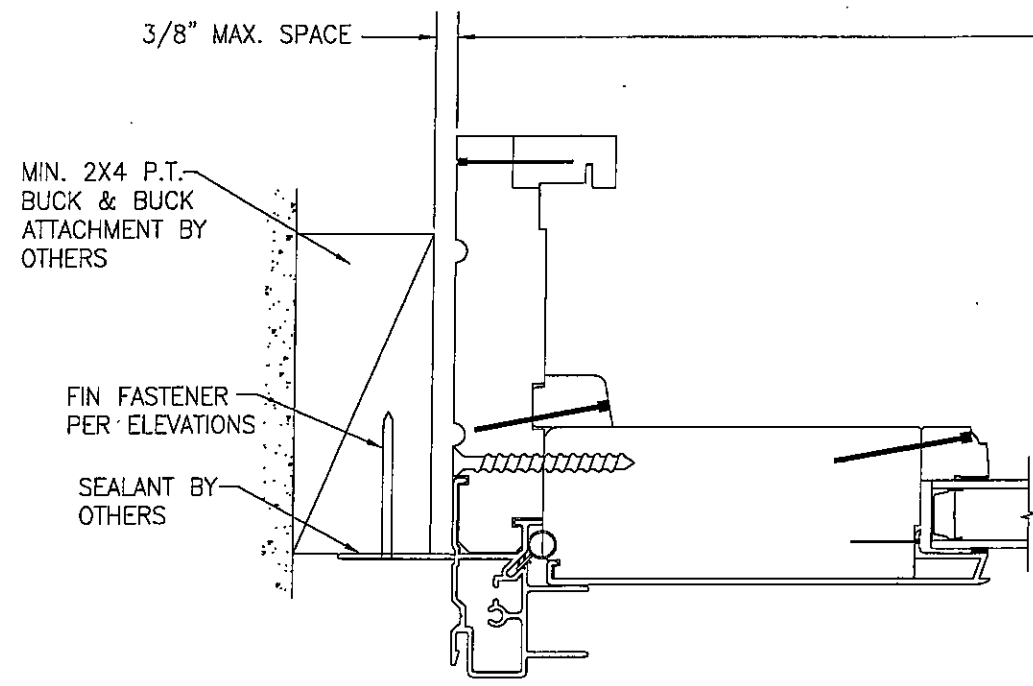


NOTE: SILL MAY BE SHIMMED UP TO 3/8". IF SHIMMING OCCURS SUCH THAT ADHESIVE CAN NOT PROPERLY ADHERE SILL TO SUBSTRATE (TYPICALLY MORE THAN 1/8" SHIM), ADDITIONAL SILL ANCHORS SHALL BE PLACED 6" FROM EACH CORNER & BELOW EACH PANEL CENTERLINE.

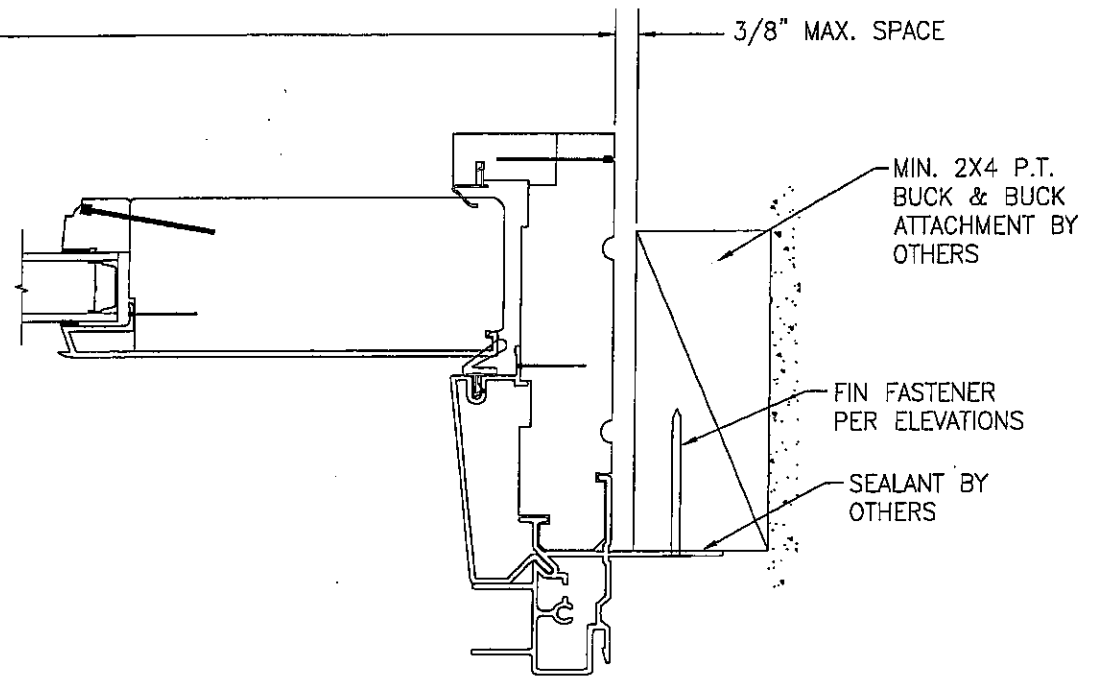


DRAWN BY: W.R.M.		CHECKED BY: W.W.S.	
PLOT: 1=2		DATE: 7/06/06	
NO.	REVISION	DESCRIPTION	DATE
DRAWING TITLE: PINNACLE ALUMINUM CLAD NON-IMPACT SLIDING GLASS DOOR			
CONSULTANTS: W. W. SCHAEFER ENGINEERING & CONSULTING, P.A.		MANUFACTURER: WINDSOR WINDOWS & DOORS	
8895 N. MILITARY TRAIL, SUITE C-204 PALM BEACH GARDENS, FL 33410 PHONE: 561-775-4902 FAX: 561-775-4903		900 S. 19TH STREET WEST DES MOINES, IA 50265 800-218-6186	
CERTIFICATION: JUL 14, 2006		WARREN W. SCHAEFER, P.E. P.E. NO. 44135	
DRAWING NO. 1484		REV.	
SHEET NO. 2		OF 3	

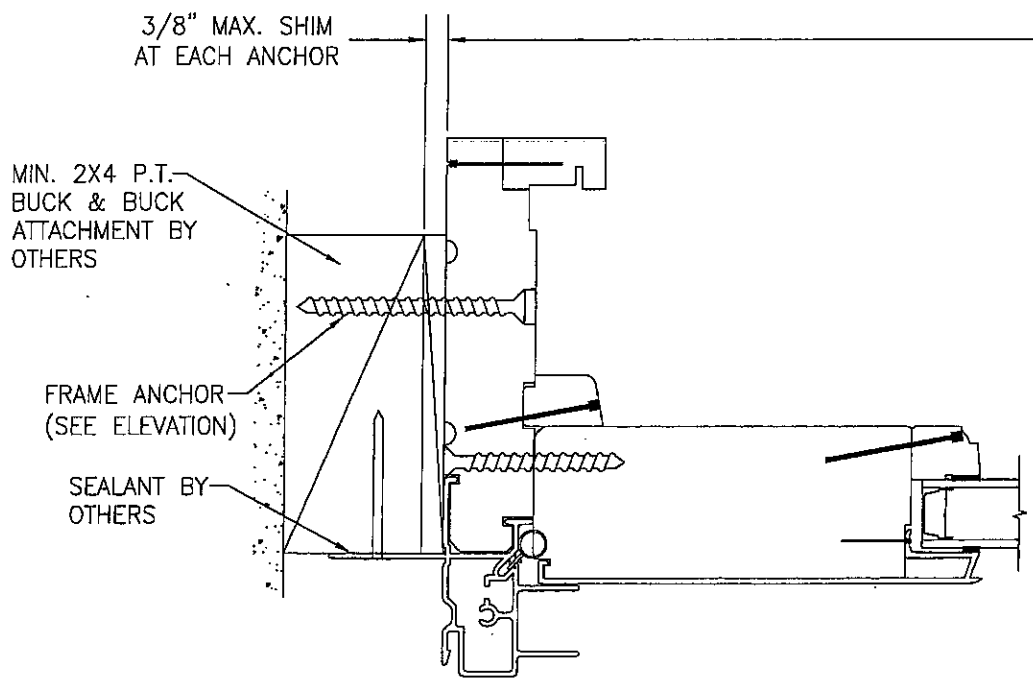
DRAWN BY: W.R.M.		CHECKED BY: W.W.S.	
PLOT: 1=2		DATE: 7/06/06	
NO.	REVISION DESCRIPTION	BY	DATE
<p>DRAWING TITLE: PINNACLE ALUMINUM CLAD NON-IMPACT SLIDING GLASS DOOR</p> <p>MANUFACTURER: WINDSOR WINDOWS & DOORS 900 S. 19TH STREET WEST DES MOINES, IA 50265 800-218-6186</p> <p>CONSULTANTS: W. W. SCHAEFER ENGINEERING & CONSULTING, P.A. 8895 N. MILITARY TRAIL, SUITE C-204 PALM BEACH GARDENS, FL 33410 PHONE: 561-775-4802 FAX: 561-775-4903</p> <p>CERTIFICATION: JUL 14 2006 WARREN W. SCHAEFER, P.E. P.E. NO. 44135</p>			
DRAWING NO. 1484		REV.	
SHEET NO. 3 OF 3			



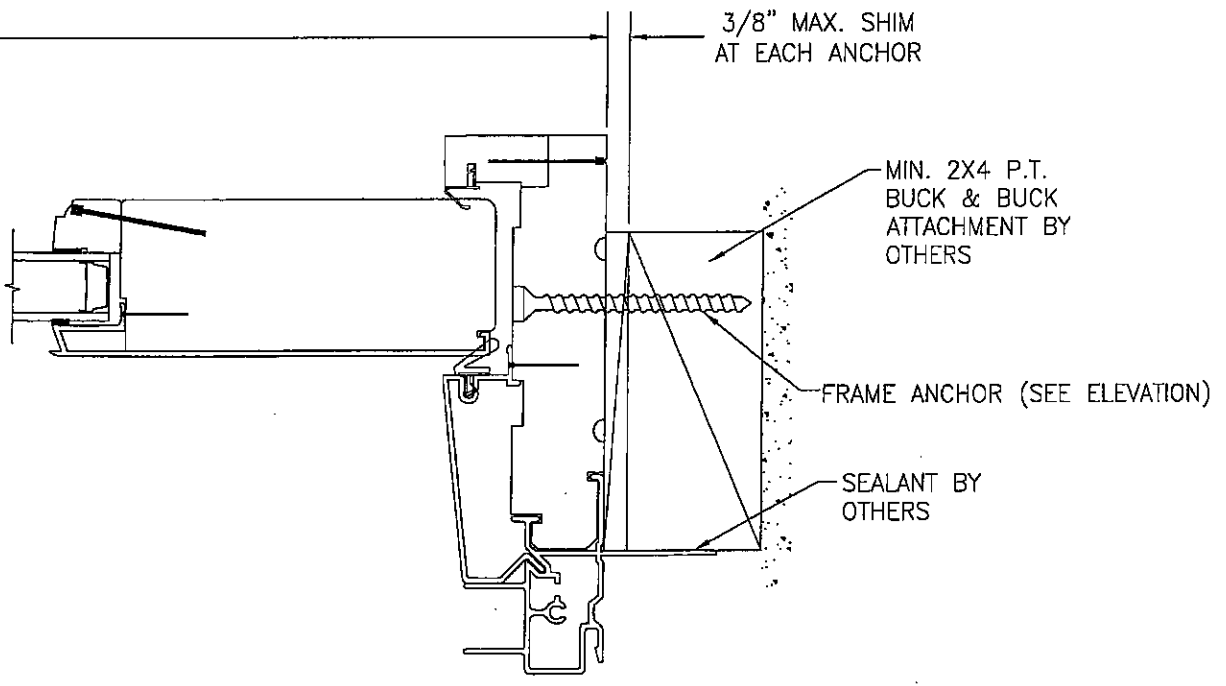
SECTION B1
SCALE: 1/2 FULL



SECTION C1
SCALE: 1/2 FULL



SECTION B2
SCALE: 1/2 FULL



SECTION C2
SCALE: 1/2 FULL