

EXTERIOR ELEVATION FIXED WINDOW NOT TO SCALE

BRICK MOLD IS OPTIONAL & MAY BE REMOVED IF REQUIRED BY OPENING CONDITIONS. (BRICK MOLD SHALL NOT ACT AS A SUBSTITUTE FOR THE FRAME ANCHORS SPECIFIED)

ALLOWABLE DESIGN PRESSURE TABLE FOR SINGLE WINDOWS

WINDOW FRAME SIZE (AREA)	ALLOWABLE PRESSURE
16 SQ. FT. & LESS	+/-55 PSF
16 SQ. FT. TO 20 SQ. FT.	+/-47 PSF
OVER 20 SQ. FT.	N/A

GENERAL NOTES

- THESE WINDOW SYSTEMS HAVE BEEN TESTED, ANALYZED & APPROVED FOR DESIGN PRESSURES NOT TO EXCEED THOSE SHOWN IN THE "ALLOWABLE DESIGN PRESSURE" TABLES.
- BUCKING, OPENINGS & BUCKING FASTENERS MUST BE PROPERLY DESIGNED & INSTALLED TO TRANSFER WIND LOADS TO THE STRUCTURE.
- ALL HARDWARE & FASTENERS SHALL BE IN ACCORDANCE WITH THESE DRAWINGS & MAY NOT VARY UNLESS SPECIFICALLY MENTIONED IN THE DRAWINGS.
- THESE WINDOW SYSTEMS HAVE BEEN DESIGNED IN ACCORDANCE WITH & MEET THE REQUIREMENTS OF THE FLORIDA BUILDING CODE (F.B.C.).
- THESE WINDOWS HAVE BEEN TESTED IN ACCORDANCE WITH ANSI/AAMA/NWMA 101/I.S. 2-97 "VOLUNTARY SPECIFICATIONS FOR ALUMINUM, VINYL (PVC) AND WOOD WINDOWS AND GLASS DOORS." REFERENCE TEST REPORT NO. 382-0359.1 & 383-0017.1 BY STORK TWIN CITY TESTING CORP. AS APPLICABLE TO THESE DRAWINGS.
- TESTS COMPLETED INCLUDE AIR INFILTRATION PER ASTM E283, WATER RESISTANCE PER ASTM E547 & /OR E331, UNIFORM LOAD STRUCTURAL PER ASTM E330 & FORCED ENTRY PER ASTM F588.
- THESE WINDOW SYSTEMS ARE NON-IMPACT RATED & MUST BE SHUTTERED WHERE REQUIRED BY CODE.
- ALL WINDOW SIZES SPECIFIED AS ALLOWABLE IN THE "WINDOW ALLOWABLE SIZE TABLE" HAVE BEEN COMPARED TO THE TESTED UNITS AND ARE RESTRICTED BY THE OVERALL SIZE (AREA) OF THE TESTED UNITS.
- GLASS SHALL BE AS SPECIFIED IN THE GLAZING DETAIL(S). GLASS TO BE USED ON ANY SPECIFIC WINDOW SHALL BE AS REQUIRED BY ASTM E1300-00 TO MEET THE JOB SPECIFIED WINDOW DESIGN PRESSURES.
- TO THE BEST OF OUR KNOWLEDGE, THE WINDOWS SHOWN HEREIN ARE CERTIFIED AND/OR QUALITY ASSURED BY A FLORIDA STATE APPROVED CERTIFICATION/OA ENTITY & SHALL BE LABELED IN ACCORDANCE WITH THE STATE CODE & CHAPTER 9B-72 DEPARTMENT OF COMMUNITY AFFAIRS-FLORIDA BUILDING COMMISSION SPECIFICATIONS. BY LABELING THE WINDOW, THE MANUFACTURER CONFIRMS THAT THE PRODUCT IS ASSEMBLED IN ACCORDANCE WITH THEIR RESPECTIVE QA & TESTING REPORTS.
- THESE DRAWINGS SHOW ALL APPLICABLE ELEVATION, COMBINATION, INSTALLATION & COMPARATIVE ANALYSIS CONDITIONS AS DETERMINED THROUGH TESTING & ENGINEERING RATIONAL ANALYSIS. WINDOW ASSEMBLY SHALL BE IN ACCORDANCE WITH THESE DRAWINGS, THE MANUFACTURER'S QUALITY ASSURANCE SPECIFICATIONS & TESTING REPORTS.
- IF ANY DEVIATION OCCURS BETWEEN THE INFORMATION ON THIS DRAWING & THE PRODUCT LABEL, THIS DRAWING SHALL CONTROL.

RECTANGULAR WINDOWS SHOWN. ANCHORING OF SHAPED WINDOWS IS THE SAME WITH REQUIRED ANCHOR SPACING ALONG THE FRAME CIRCUMFERENCE BEING THE SAME AS SPECIFIED FOR A STRAIGHT FRAME.

APPROVED SHAPES



NOTES:

- OTHER SHAPES MAY APPLY PROVIDING THEY ARE SIMILAR TO THOSE SHOWN & HAVE CORNER CONSTRUCTION AS DESCRIBED ON THIS SHEET.
- ALL SHAPED UNITS MUST FIT INSCRIBED INTO THE ALLOWABLE RECTANGULAR UNITS & BE GOVERNED BY THE ALLOWABLE PRESSURE OF THE RESPECTIVE RECTANGULAR UNIT.

WINDOW ALLOWABLE SIZE TABLE

MAXIMUM FRAME DIMENSIONS	
SHORT SIDE (IN.)	LONG SIDE (IN.)
(2) 48	60
42	68
(1) 38	76
36	80
30	96
24	120

- (1) = TESTED SIZE
(2) = WINDOW SHORT SIDE DIMENSION MAY NOT EXCEED 48"

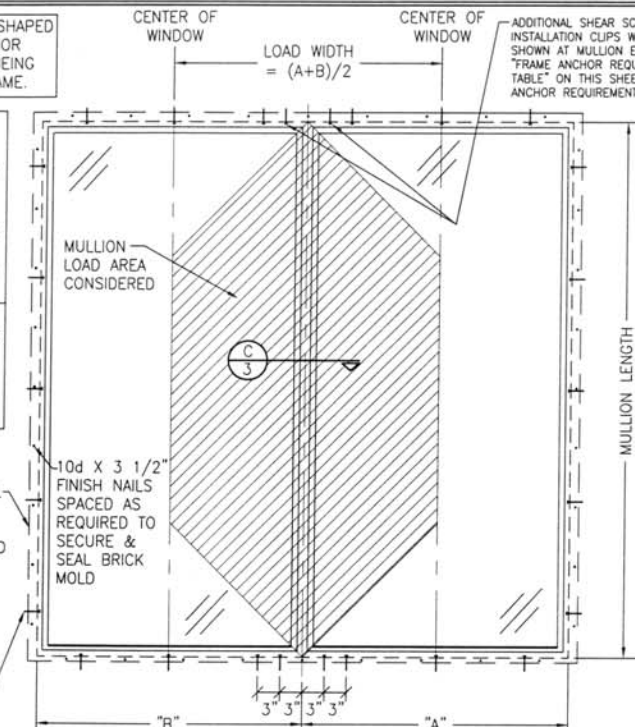
FRAME ANCHOR REQUIREMENTS TABLE

INSTALLATION CLIP ANCHORS			
OPENING TYPE (SUBSTRATE)	JAMB/CLIP TO OPENING FASTENER TYPE	MINIMUM EMBED	MINIMUM EDGE DIST.
2X_ WOOD FRAME OR BUCK	NO. 8 X 1 1/2" SMS SCREWS	1 1/4"	1/2"
SHEAR SCREWS			
2X_ WOOD FRAME OR BUCK	NO. 10 SMS SCREW	1 1/4"	3/4"
CMU/CONCRETE	(1) 3/16" CONCRETE SCREW	1 1/4"	2"
(1) CONCRETE SCREWS SHALL BE ELCO OR ITW RAMSET/RED HEAD TAPCONS, HILTI KWI-KON II OR POWERS RAWL TAPPER (HARDENED STEEL OR S.S.).			

- * ANCHOR NOTE: FRAME MAY BE EITHER DIRECT MOUNTED TO THE OPENING, MOUNTED ONTO A CONTINUOUS WOOD SPACER, OR ANCHORED TO A MIN. 2x4 NO. 3 SOUTHERN PINE WOOD BUCK. WHEN ANCHORED TO A 2x4 BUCK, NO. 10 SHEAR SCREWS OR INSTALLATION CLIPS SHALL BE USED. WHEN DIRECT MOUNTED OR MOUNTED WITH SPACER, 3/16" CONCRETE SCREWS SHALL BE USED. SEE "ANCHOR REQUIREMENTS TABLE" FOR EMBED REQUIREMENTS.

BRICK MOLD IS OPTIONAL & MAY BE REMOVED IF REQUIRED BY OPENING CONDITIONS. (BRICK MOLD SHALL NOT ACT AS A SUBSTITUTE FOR THE FRAME ANCHORS SPECIFIED)

TYP. FRAME SCREW OR INSTALLATION CLIP PER SINGLE WINDOW ELEVATION



FIXED WINDOW TO FIXED WINDOW WHEN WINDOW WIDTHS ARE LESS THAN OR EQUAL TO THE MULLION LENGTH
(SEE MULLION LOAD TABLE ON SHEET 2)

(DOUBLE WINDOW SHOWN. MORE THAN 2 WINDOWS MAY BE MULLED TOGETHER IN ONE DIRECTION INTO ONE OPENING.)

NOTE: MULLION MAY BE HORIZONTAL OR VERTICAL
SEE SINGLE WINDOW ELEVATION FOR DETAIL NOT SHOWN

MULTIPLE UNIT NOTES:

- THE MAXIMUM ALLOWABLE PRESSURE FOR A COMBINED UNIT IS RESTRICTED BY THE LESSER OF THE INDIVIDUAL WINDOW ALLOWABLE PRESSURE OR THE ALLOWABLE MULLION PRESSURE. SEE MULLION LOAD TABLE ON SHEET 2 FOR ALLOWABLE UNIT PRESSURE.
- WINDOWS MAY BE STACKED HORIZONTAL OR VERTICAL. (IF VERTICALLY STACKED, MANUFACTURER MUST INSURE THAT THE DEAD WEIGHT OF THE WINDOWS DOES NOT CAUSE ANY WINDOW FAILURES OR DEFORMATIONS)

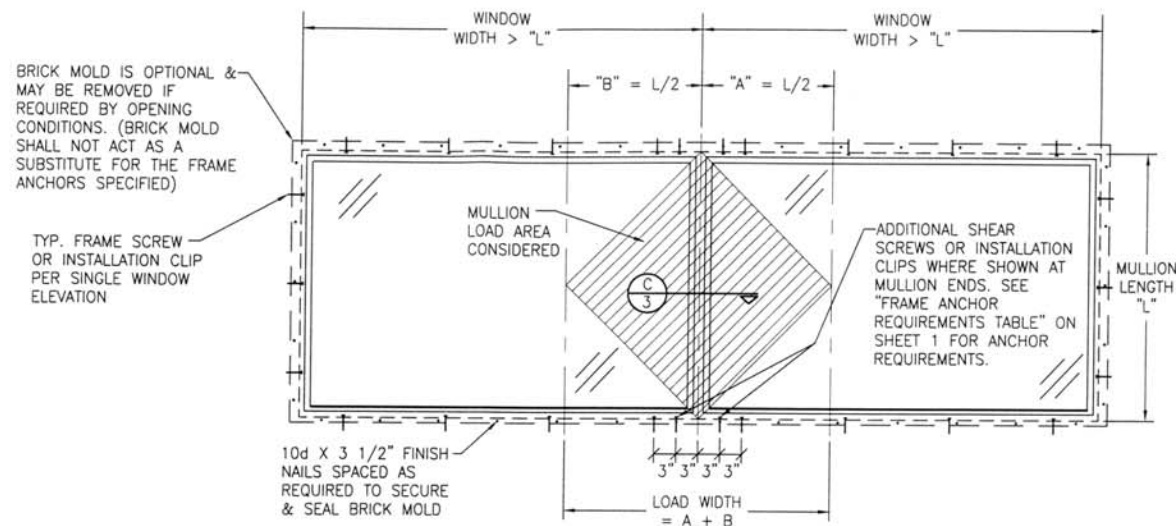
CORNER CONSTRUCTION

STANDARD CORNERS: HEAD JAMB IS BUTTED TO SIDE JAMB & SECURED WITH (3) STAPLES PER CORNER. SILL JAMB IS BUTTED TO SIDE JAMB & SECURED WITH (3) STAPLES & (1) NO. 7 X 2" SMS PER CORNER. ALL CORNERS SEALED WITH SILICONE SEALANT.
MULLION CORNERS: BUTTED & SECURED WITH (3) STAPLES PER CORNER & (3) NO. 8 X 2 1/2" SCREWS THROUGH ONE JAMB INTO THE OTHER.

DRAWN BY: K.P.S.		CHECKED BY: M.S.	
PLOT: 1=16		DATE: 02/12/04	
DATE	BY	NO.	REVISION DESCRIPTION
LEGEND RECTANGULAR & RADIUS DIRECT SET WINDOW			
CONSULTANTS W. W. SCHAEFER ENGINEERING & CONSULTING, P.A. 8811 N. W. 11TH AVE., SUITE 204 PALM BEACH GARDENS, FL 33410 PHONE: 561-775-4902 FAX: 561-775-4903			
MANUFACTURER WINDSOR WINDOWS & DOORS 900 S. 19TH STREET WEST DES MOINES, IA 50265 800-218-6186			
CERTIFICATION APR 15 2004 WARREN W. SCHAEFER, P.E. P.E. NO. 44135			
DRAWING NO. 1274		REV.	
SHEET NO. 1		OF 3	

ALLOWABLE DESIGN PRESSURE FOR MULLED UNITS		
MAXIMUM MULLION LENGTH (IN.)	MAXIMUM LOAD WIDTH (IN.)	(1) ALLOWABLE PRESSURE (PSF)
76	38	46.1
	36	48.7
	30	55.0
72	40	51.6
	36	55.0
66	44	55.0
60	48	55.0
54	54	55.0

(1) ALLOWABLE PRESSURE IS FOR BOTH POSITIVE & NEGATIVE

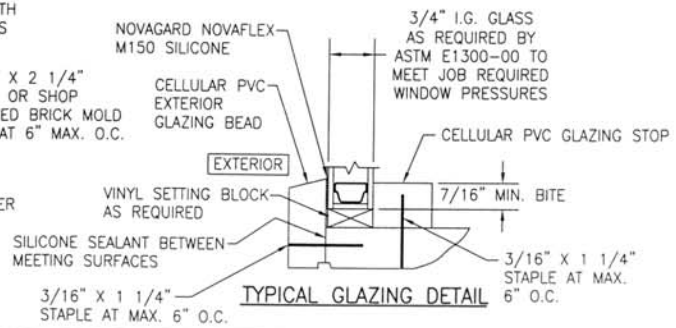
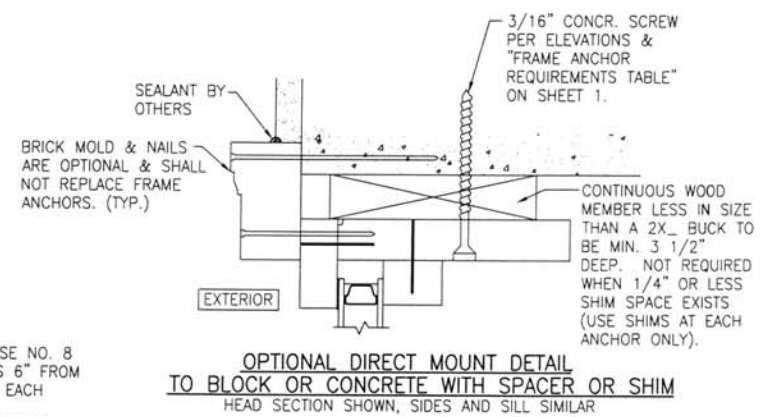
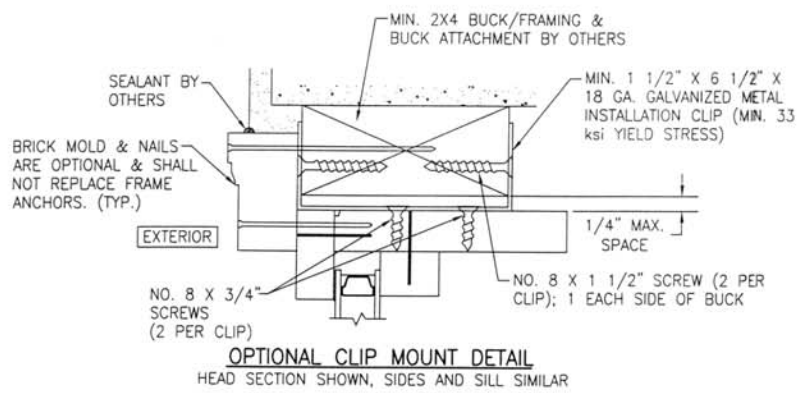
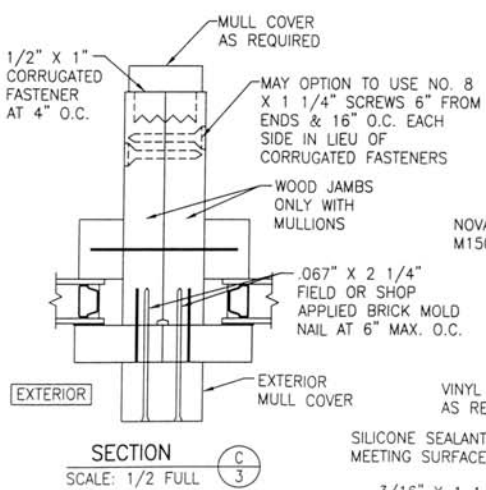
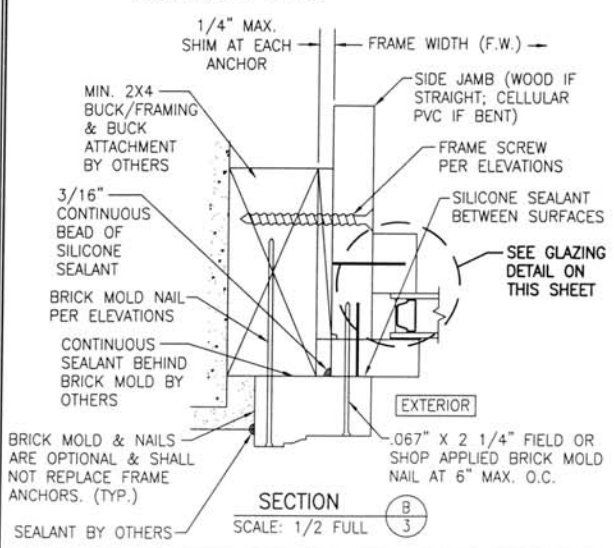
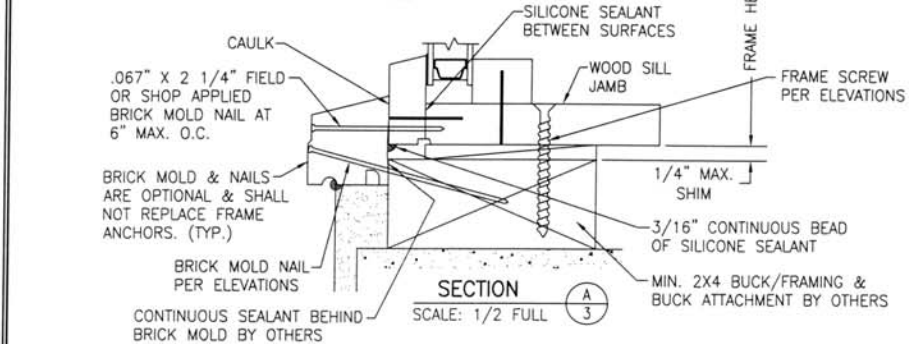
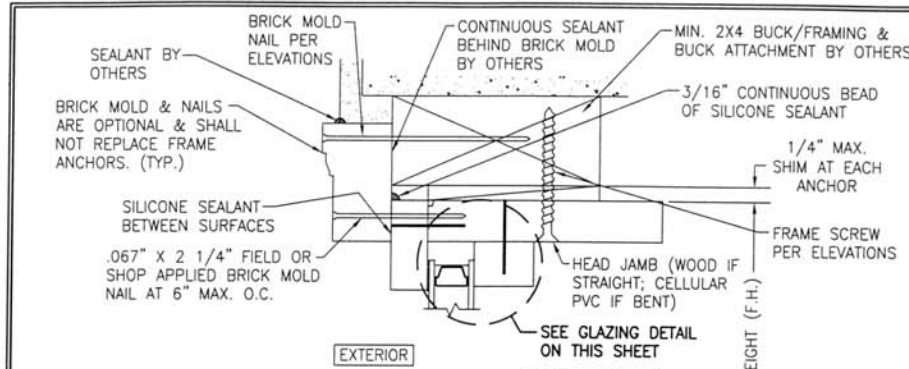


FIXED WINDOW TO FIXED WINDOW WHEN WINDOW WIDTHS ARE GREATER THAN THE MULLION LENGTH
(SEE MULLION LOAD TABLE ON THIS SHEET)
(DOUBLE WINDOW SHOWN. MORE THAN 2 WINDOWS MAY BE MULLED TOGETHER IN ONE DIRECTION INTO ONE OPENING.)

MULTIPLE UNIT NOTES:

1. THE MAXIMUM ALLOWABLE PRESSURE FOR A COMBINED UNIT IS RESTRICTED BY THE LESSER OF THE INDIVIDUAL WINDOW ALLOWABLE PRESSURE OR THE ALLOWABLE MULLION PRESSURE. SEE MULLION LOAD TABLE ON THIS SHEET FOR ALLOWABLE UNIT PRESSURE.
2. WINDOWS MAY BE STACKED HORIZONTAL OR VERTICAL. (IF VERTICALLY STACKED, MANUFACTURER MUST INSURE THAT THE DEAD WEIGHT OF THE WINDOWS DOES NOT CAUSE ANY WINDOW FAILURES OR DEFORMATIONS)

DRAWN BY: K.P.S.		CHECKED BY: W.W.S.	
PLOT: 1=16		DATE: 02/12/04	
DATE	BY	REVISION DESCRIPTION	NO
DRAWING TITLE: LEGEND RECTANGULAR & RADIUS DIRECT SET WINDOW			
CONSULTANTS: W. W. SCHAEFER ENGINEERING & CONSULTING, P.A.		MANUFACTURER: WINDSOR WINDOWS & DOORS	
8895 N. MILITARY TRAIL, SUITE C-204 PALM BEACH GARDENS, FL 33410 PHONE: 561-775-4902 FAX: 561-775-4903		900 S. 19TH STREET WEST DES MOINES, IA 50265 800-218-6186	
CERTIFICATION: APR 15 2004		WARREN W. SCHAEFER, P.E. P.E. NO. 44135	
DRAWING NO. 1274		REV.	
SHEET NO. 2		OF 3	



DRAWING TITLE		LEGEND RECTANGULAR & RADIUS DIRECT SET WINDOW	
CONSULTANTS		MANUFACTURER	
W. W. SCHAEFER ENGINEERING & CONSULTING, P.A.		WINDSOR WINDOWS & DOORS	
8885 W. PALM BEACH BLVD., SUITE 100A		900 S. 19TH STREET	
PALM BEACH, FLORIDA 33411-4104		WEST DES MOINES, IA 50265	
PHONE: 561-775-4902 FAX: 561-775-4903		800-218-6186	
CERTIFICATION		REV	
APR 15 2004		1274	
DRAWING NO.		SHEET NO.	
1274		3 OF 3	