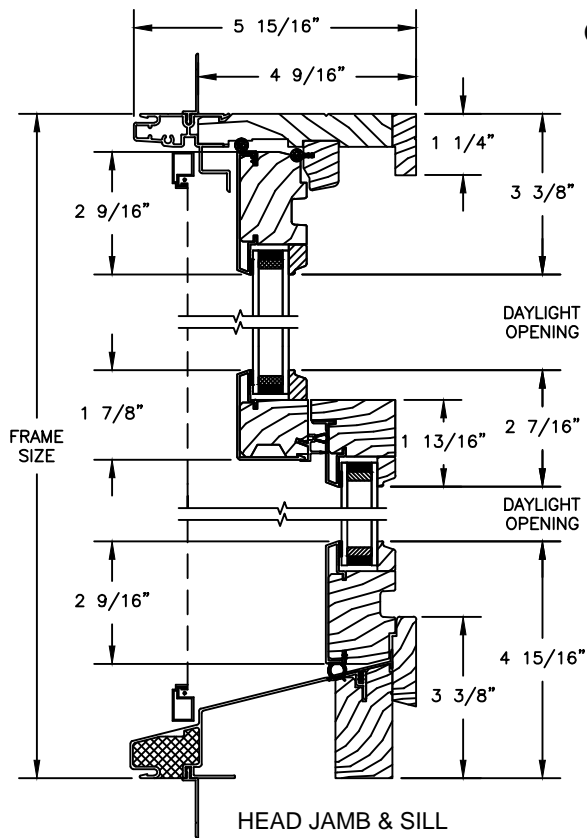


# Pinnacle Series

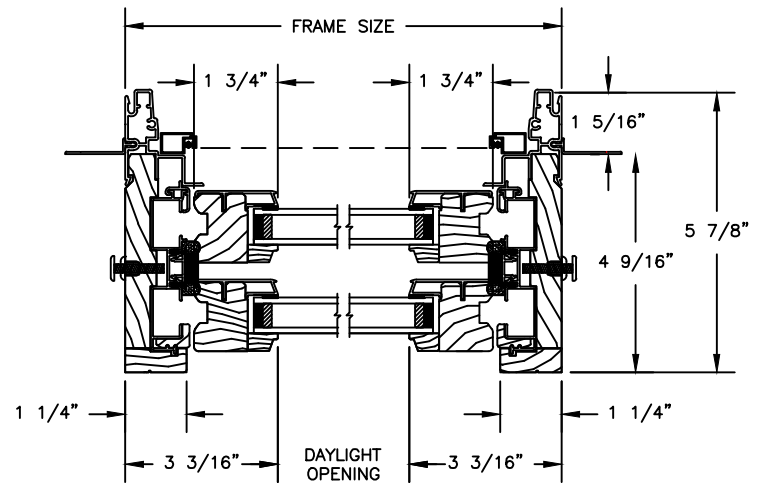
## CLAD DOUBLE HUNG - Concealed Jambliner Option

SECTION DETAILS : OPERATING / PICTURE

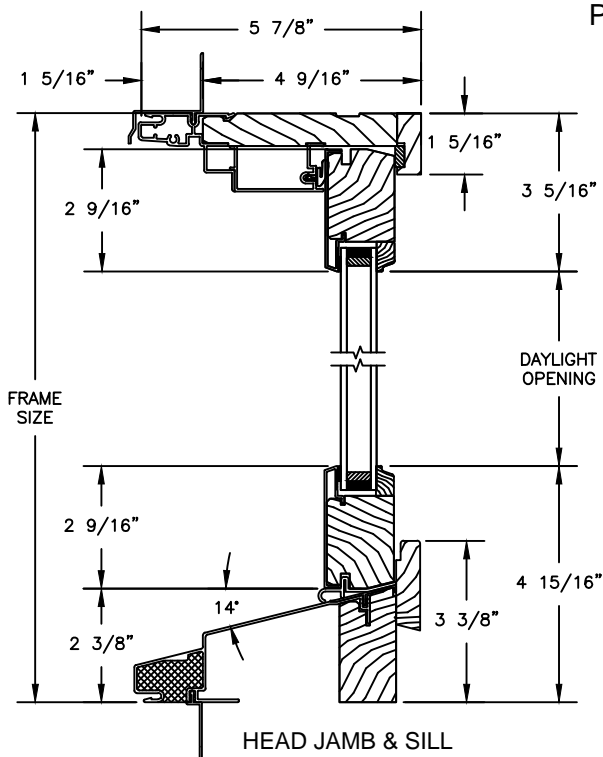
SCALE: 3" = 1'-0"



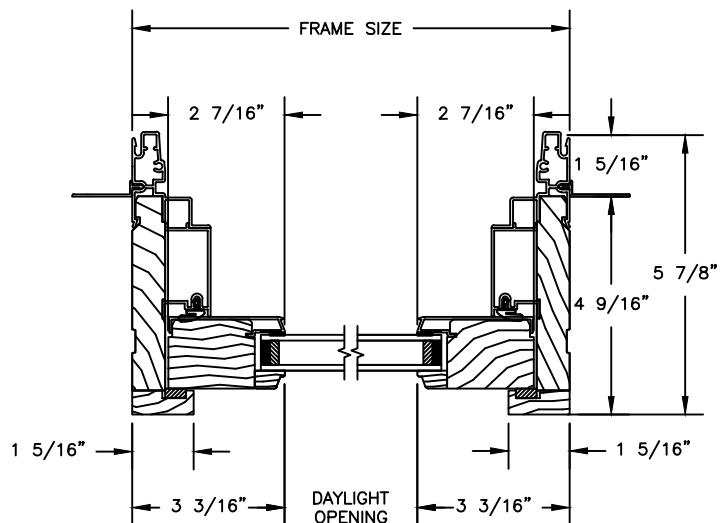
OPERATING



JAMBS



PICTURE



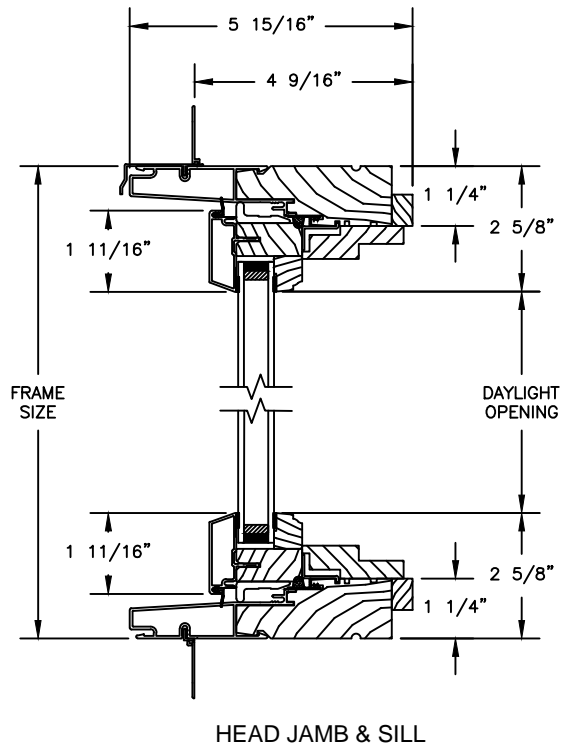
JAMBS

# Pinnacle Series

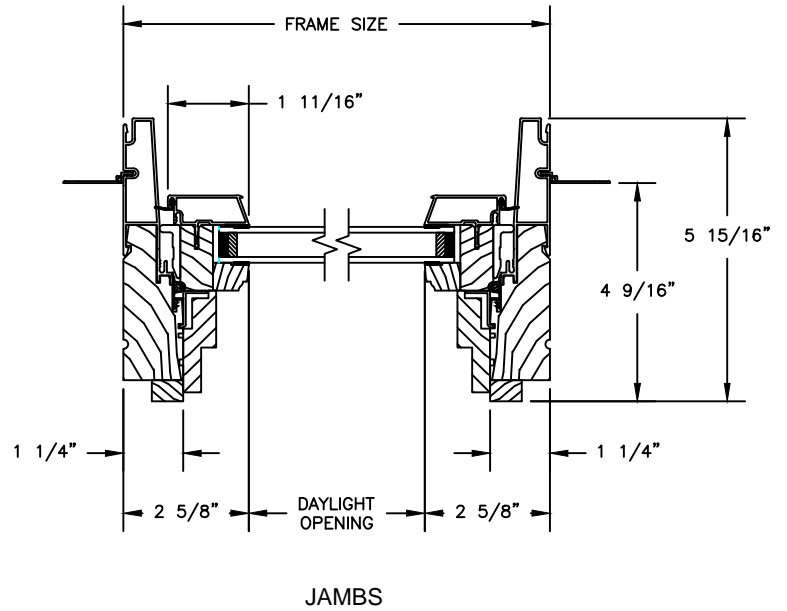
## CLAD DOUBLE HUNG - Concealed Jambliner Option

SECTION DETAILS : TRANSOM

SCALE: 3" = 1'-0"



### TRANSOM

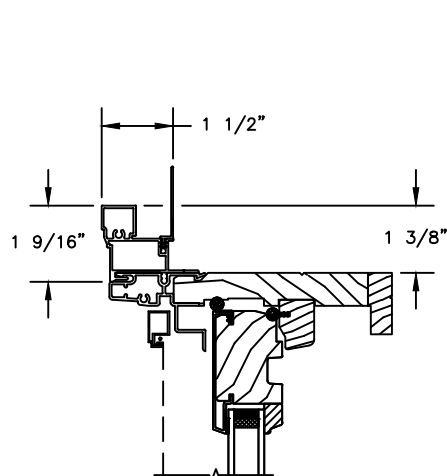


# Pinnacle Series

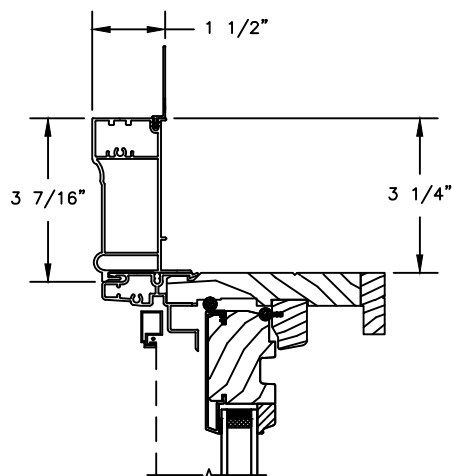
## CLAD DOUBLE HUNG - Concealed Jambliner Option

SECTION DETAILS : CASING OPTIONS

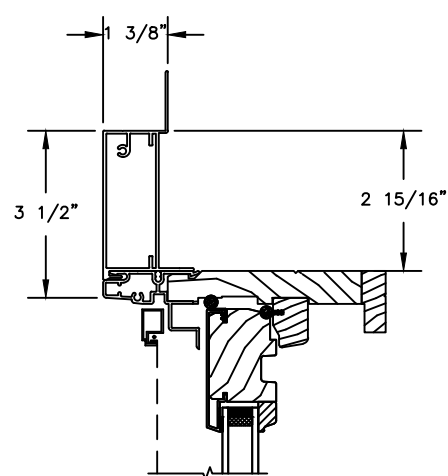
SCALE: 3" = 1'-0"



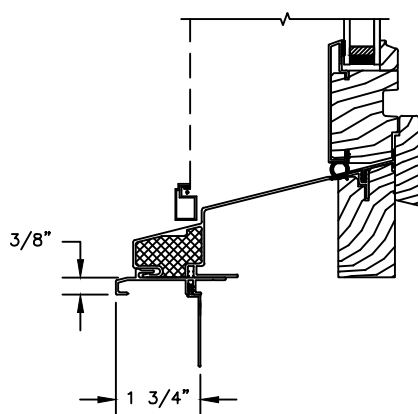
HEAD JAMB WITH  
CLAD BRICKMOULD CASING



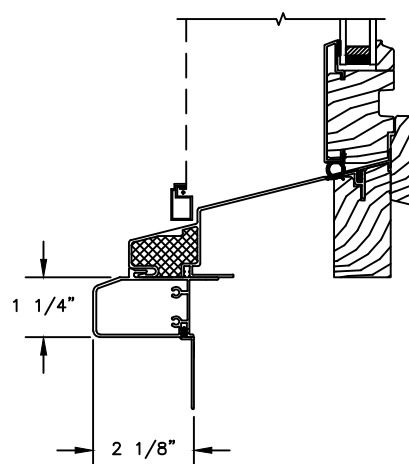
HEAD JAMB WITH  
CLAD WILLIAMSBURG CASING



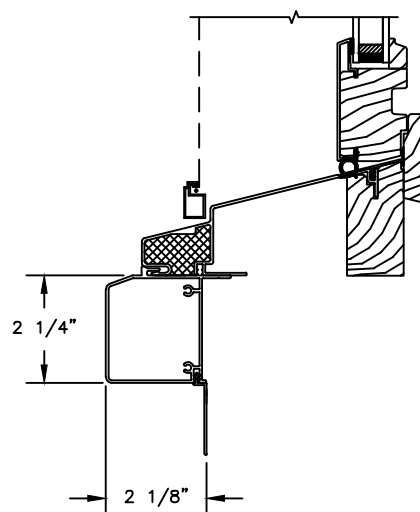
HEAD JAMB WITH  
3 1/2" CLAD FLAT CASING



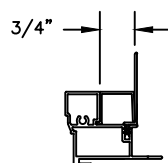
SILL WITH  
3/8" CLAD SUBSILL



SILL WITH  
1 1/4" CLAD SUBSILL



SILL WITH  
2 1/4" CLAD SUBSILL



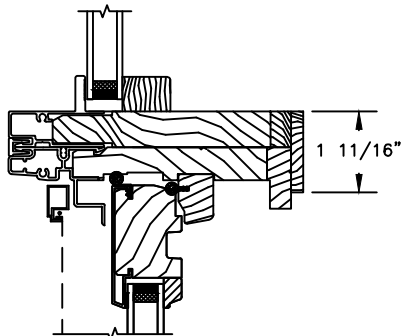
CLAD BRICKMOULD CASING  
WITH OPTIONAL J-CHANNEL COVER

# Pinnacle Series

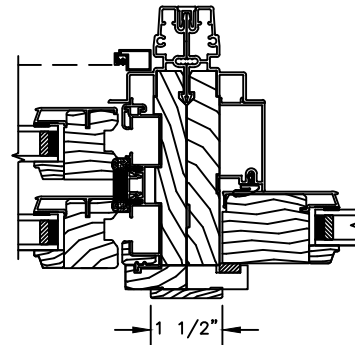
## CLAD DOUBLE HUNG - Concealed Jambliner Option

### SECTION DETAILS : MULLIONS

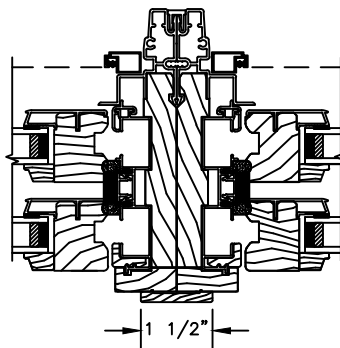
SCALE: 3" = 1'-0"



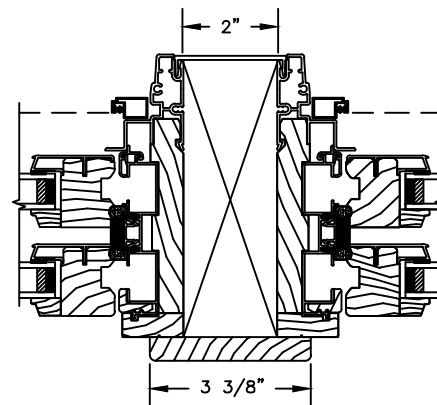
HORIZONTAL MULLION  
RADIUS/OPERATOR



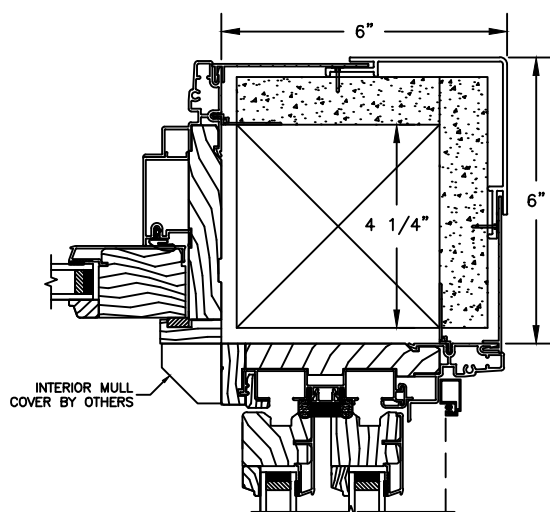
VERTICAL MULLION  
OPERATOR/PICTURE



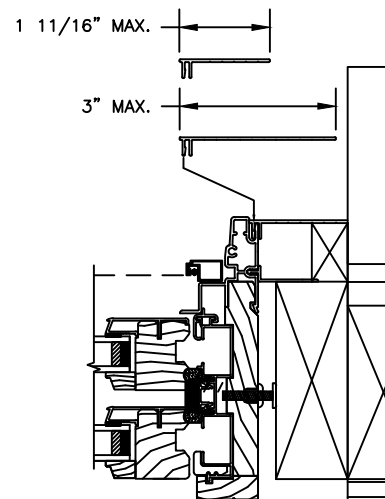
VERTICAL MULLION  
OPERATOR/OPERATOR



VERTICAL MULLION WITH  
2" SPREAD MULL  
ADDITIONAL WIDTHS INCLUDE:  
2 1/2", 4" & 6"



90° MULLION  
PICTURE/OPERATOR  
(ONLY USED WITH 4 9/16" JAMB & 3 1/4"  
FRAME EXPANDER)



NOTE :  
FOR INFORMATION ON STRUCTURAL MULLIONS REFER TO  
THE PRODUCT PERFORMANCE AND INFORMATION SECTION.


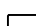
# Pinnacle Series

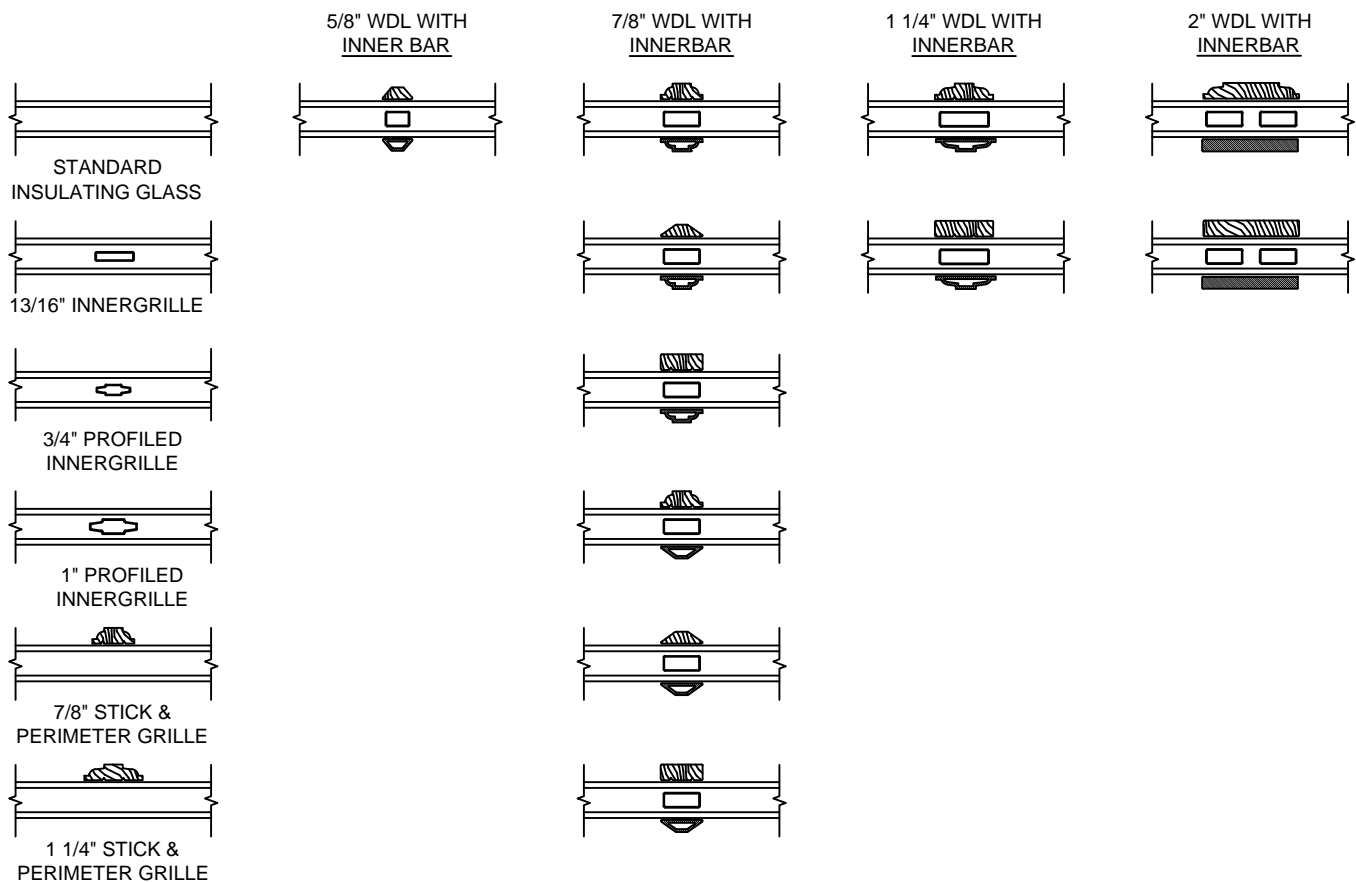
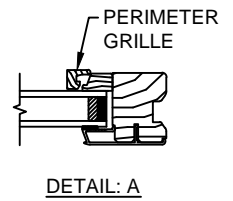
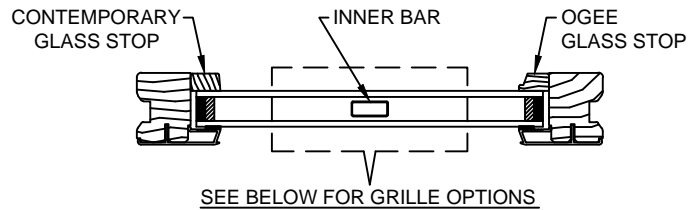
## CLAD DOUBLE HUNG - Concealed Jambliner Option

SECTION DETAILS : DIVIDED LITE OPTIONS

SCALE: 3" = 1'-0"

### AVAILABLE STYLES

-  - PUTTY
-  - OGEE
-  - CONTEMPORARY



### NOTE:

\* ALL WDL OPTIONS CAN BE ORDERED WITH OR WITHOUT INNER BAR

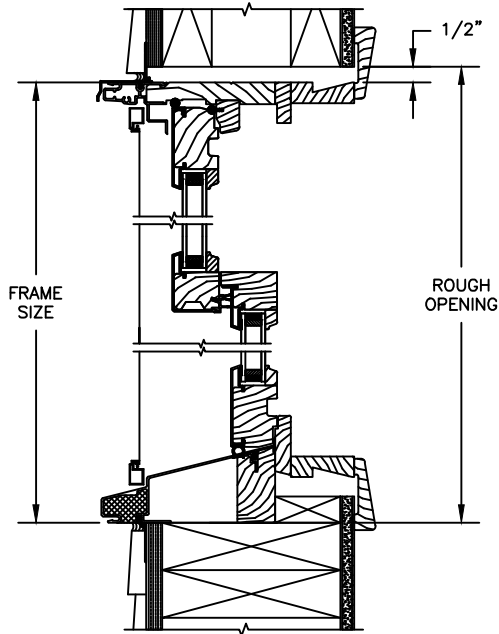
\* PERIMETER GRILLES ONLY AVAILABLE IN THE 7/8" AND 1 1/4" OGEE STYLE GLASS STOP (SEE DETAIL: A)

# Pinnacle Series

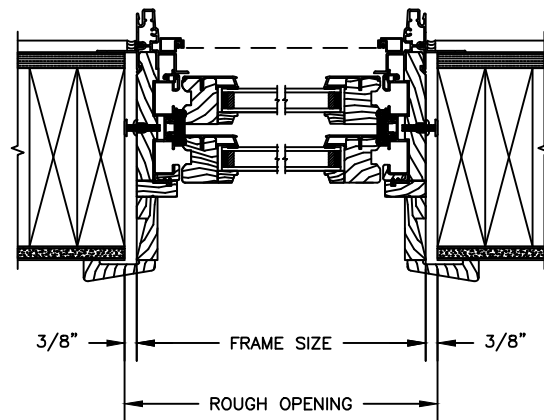
## CLAD DOUBLE HUNG - Concealed Jambliner Option

### SECTION DETAILS : CONSTRUCTION

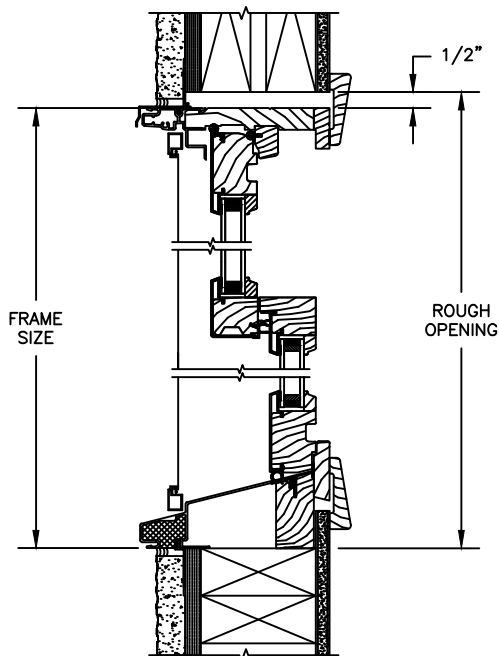
SCALE: 2" = 1'-0"



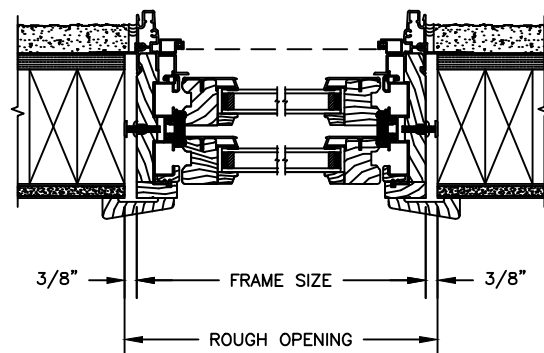
HEAD JAMB & SILL  
2 X 6 FRAME WITH SIDING



HEAD JAMB & SILL  
2 X 6 FRAME WITH SIDING



HEAD JAMB & SILL  
2 X 4 FRAME WITH STUCCO



JAMBS  
2 X 4 FRAME WITH STUCCO

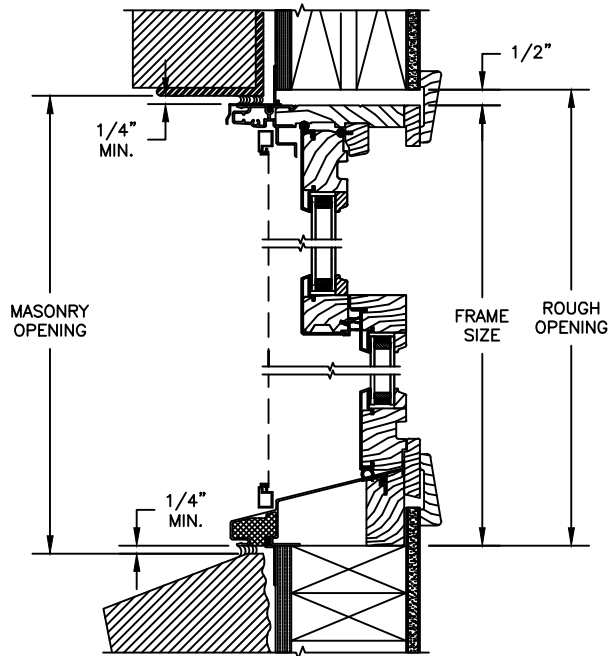
NOTE :  
THE ABOVE WALL SECTIONS REPRESENT TYPICAL WALL CONDITIONS, THESE DETAILS ARE NOT INTENDED AS INSTALLATIONS INSTRUCTIONS. PLEASE REFER TO THE INSTALLATION INSTRUCTIONS PROVIDED WITH THE PURCHASED UNITS.

# Pinnacle Series

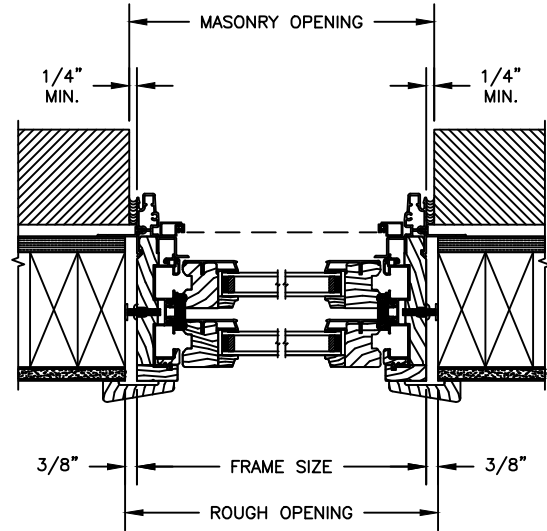
## CLAD DOUBLE HUNG - Concealed Jambliner Option

SECTION DETAILS : CONSTRUCTION

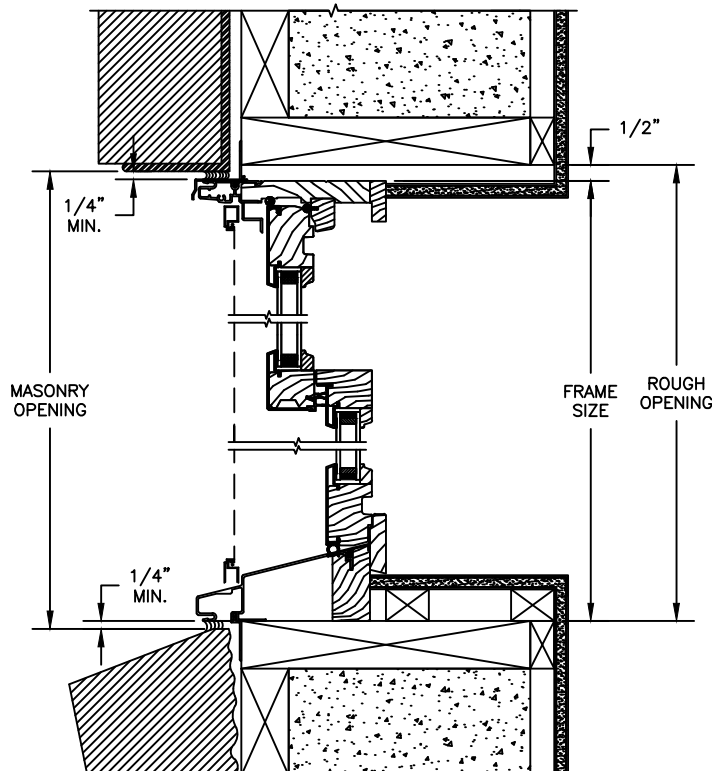
SCALE: 2" = 1'-0"



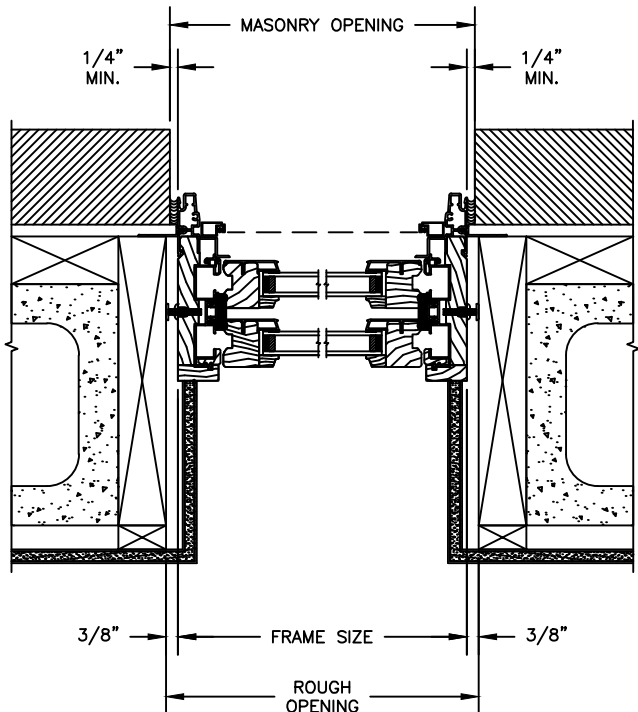
HEAD JAMB & SILL  
2 X 4 FRAME WITH BRICK VENEER



JAMBS  
2 X 4 FRAME WITH BRICK VENEER



HEAD JAMB & SILL  
8" CONCRETE BLOCK WALL  
WITH BRICK VENEER



JAMBS  
8" CONCRETE BLOCK WALL  
WITH BRICK VENEER

# Pinnacle Series

## CLAD DOUBLE HUNG - Concealed Jambliner Option

SECTION DETAILS : 30/45 DEGREES BAY

SCALE: 2" = 1'-0"

