

BRICK MOLD IS OPTIONAL & MAY BE REMOVED IF REQUIRED BY OPENING CONDITIONS. (BRICK MOLD SHALL NOT ACT AS A SUBSTITUTE FOR THE FRAME ANCHORS SPECIFIED)

EXTERIOR ELEVATION  
IN-SASH TRANSOM WINDOW  
SCALE: 3/4"=1'-0"

ALLOWABLE DESIGN PRESSURE  
(SINGLE WINDOW)  
+/-50 PSF

WINDOW ALLOWABLE SIZE TABLE		
MAXIMUM FRAME DIMENSIONS		
	SHORT SIDE (IN.)	LONG SIDE (IN.)
(1)	48	48
	42	54
	36	64
	32	72
	30	76
	24	96
	18	128
TESTED SIZES = 48" X 48" AND 32" X 68"		

## GENERAL NOTES

1. THESE WINDOW SYSTEMS HAVE BEEN TESTED, ANALYZED & APPROVED FOR DESIGN PRESSURES NOT TO EXCEED THOSE SHOWN IN THE "ALLOWABLE DESIGN PRESSURE" TABLE.
2. BUCKING, OPENINGS & BUCKING FASTENERS MUST BE PROPERLY DESIGNED & INSTALLED TO TRANSFER WIND LOADS TO THE STRUCTURE.
3. ALL HARDWARE & FASTENERS SHALL BE IN ACCORDANCE WITH THESE DRAWINGS & MAY NOT VARY UNLESS SPECIFICALLY MENTIONED ON THE DRAWINGS.
4. THESE WINDOW SYSTEMS HAVE BEEN DESIGNED IN ACCORDANCE WITH & MEET THE REQUIREMENTS OF THE FLORIDA BUILDING CODE (F.B.C.).
5. THESE WINDOWS HAVE BEEN TESTED IN ACCORDANCE WITH AAMA/NWDA 101/1.5, 2-97 "VOLUNTARY SPECIFICATIONS FOR ALUMINUM, VINYL (PVC) AND WOOD WINDOWS AND GLASS DOORS." REFERENCE TEST REPORTS NO. 383-0017.2 & 383-0062.1 BY STORK TWIN CITY TESTING CORPORATION AS APPLICABLE TO THESE DRAWINGS.
6. TESTS COMPLETED INCLUDE AIR INFILTRATION PER ASTM E283, WATER RESISTANCE PER ASTM E547 &/OR E331, UNIFORM LOAD STRUCTURAL PER ASTM E330 & FORCED ENTRY PER ASTM F588.
7. THESE WINDOW SYSTEMS ARE NON-IMPACT RATED & MUST BE SHUTTERED WHERE REQUIRED BY CODE.
8. ALL WINDOW SIZES SPECIFIED AS ALLOWABLE IN THE "WINDOW ALLOWABLE SIZE TABLE" ARE AS CONTROLLED BY THE TESTED UNITS.
9. GLASS SHALL BE AS SPECIFIED IN THE GLAZING DETAIL(S). GLASS TO BE USED ON ANY SPECIFIC WINDOW SHALL BE AS REQUIRED BY ASTM E1300-00 TO MEET THE JOB SPECIFIED WINDOW DESIGN PRESSURES.
10. TO THE BEST OF OUR KNOWLEDGE, THE WINDOWS SHOWN HEREIN ARE CERTIFIED AND/OR QUALITY ASSURED BY A FLORIDA STATE APPROVED CERTIFICATION/QA ENTITY & SHALL BE LABELED IN ACCORDANCE WITH THE STATE CODE & CHAPTER 9B-72 DEPARTMENT OF COMMUNITY AFFAIRS-FLORIDA BUILDING COMMISSION SPECIFICATIONS. BY LABELING THE WINDOW, THE MANUFACTURER CONFIRMS THAT THE PRODUCT IS ASSEMBLED IN ACCORDANCE WITH THEIR RESPECTIVE QA & TESTING REPORTS.
11. THESE DRAWINGS SHOW ALL APPLICABLE ELEVATION, COMBINATION, INSTALLATION & COMPARATIVE ANALYSIS CONDITIONS AS DETERMINED THROUGH TESTING & ENGINEERING RATIONAL ANALYSIS. WINDOW ASSEMBLY SHALL BE IN ACCORDANCE WITH THESE DRAWINGS. THE MANUFACTURER'S QUALITY ASSURANCE SPECIFICATIONS & TESTING REPORTS.
12. IF ANY DEVIATION OCCURS BETWEEN THE INFORMATION ON THIS DRAWING & THE PRODUCT LABEL, THIS DRAWING SHALL CONTROL.

## FRAME ANCHOR REQUIREMENTS TABLE

INSTALLATION CLIP ANCHORS			
OPENING TYPE (SUBSTRATE)	JAMB/CLIP TO OPENING FASTENER TYPE	MINIMUM EMBED	MINIMUM EDGE DIST.
2X_ WOOD FRAME OR BUCK	NO. 8 X 1 1/2" SMS SCREWS	1 1/4"	1/2"
SHEAR SCREWS			
2X_ WOOD FRAME OR BUCK	NO. 10 SMS SCREW	1 1/4"	3/4"
CMU/CONCRETE	(1) 3/16" CONCRETE SCREW	1 1/4"	2"
(1) CONCRETE SCREWS SHALL BE ELCO OR ITW RAMSET/RED HEAD TAPCONS, HILTI KWIK-CON II OR POWERS RAWL TAPPER (HARDENED STEEL OR S.S.).			

- ANCHOR NOTE: FRAME MAY BE EITHER DIRECT MOUNTED TO THE OPENING, MOUNTED ONTO A CONTINUOUS WOOD SPACER, OR ANCHORED TO A MIN. 2x4 NO. 3 SOUTHERN PINE WOOD BUCK. WHEN ANCHORED TO A 2x4 BUCK, NO. 10 SHEAR SCREWS OR INSTALLATION CLIPS SHALL BE USED. WHEN DIRECT MOUNTED OR MOUNTED WITH SPACER, 3/16" CONCRETE SCREWS SHALL BE USED. SEE "ANCHOR REQUIREMENTS TABLE" FOR EMBED REQUIREMENTS.

## JAMB CORNER CONSTRUCTION

STANDARD CORNERS: HEAD & SILL JAMBS ARE BUTTED TO SIDE JAMB & JOINED WITH (3) STAPLES PER CORNER. ALL CORNERS SEALED WITH SILICONE SEALANT.  
MULLION CORNERS: BUTTED & JOINED WITH (3) STAPLES & (3) NO. 8 X 2 1/2" SCREWS PER CORNER. ALL CORNERS SEALED WITH SILICONE SEALANT.

DRAWN BY: K.P.S.  
CHECKED BY: W.W.S.  
PLOT: 1=16  
DATE: 03/29/04

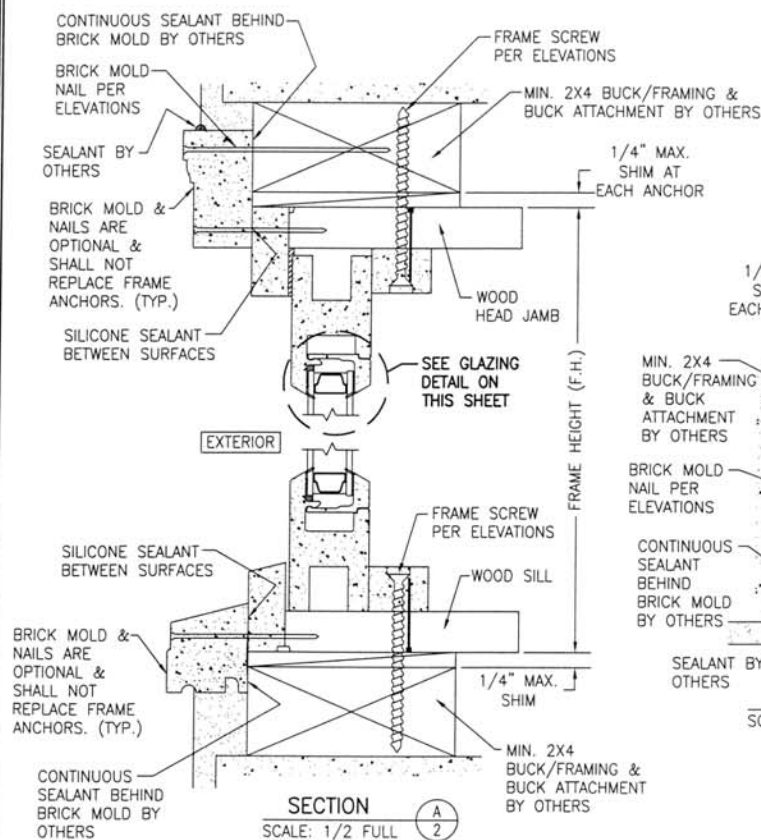
NO.	REVISION	DESCRIPTION

LEGEND DOUBLE HUNG IN-SASH TRANSOM WINDOW  
MANUFACTURER  
WINDSOR WINDOWS & DOORS  
900 S. 19TH STREET  
WEST DES MOINES, IA 50265  
800-218-6186

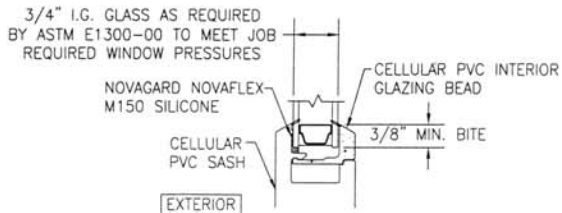
CONSULTANTS  
W. SCHAEFER ENGINEERING & CONSULTING, P.A.  
8805 N. WASHINGTON BLVD., SUITE 304  
PALM BEACH GARDENS, FL 33410  
PHONE: 561-775-4902 FAX: 561-775-4903

CERTIFICATION  
APR 15 2004  
WARREN W. SCHAEFER, P.E.  
P.E. NO. 44135

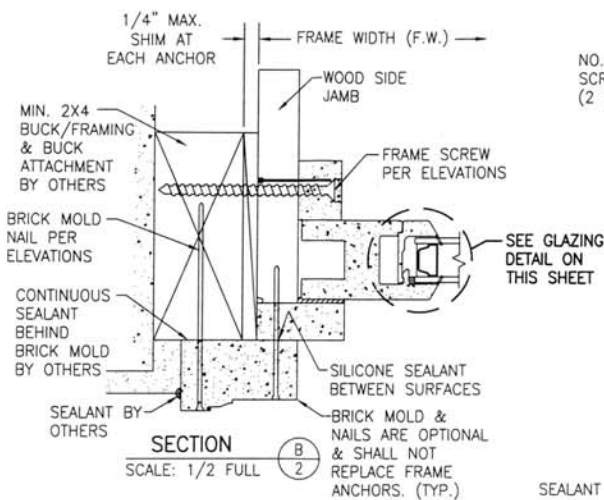
DRAWING NO. 1275  
SHEET NO. 1 OF 2



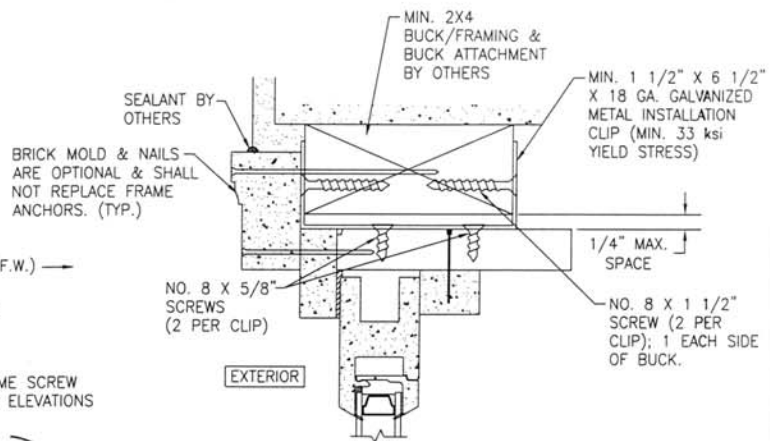
SECTION A  
SCALE: 1/2 FULL



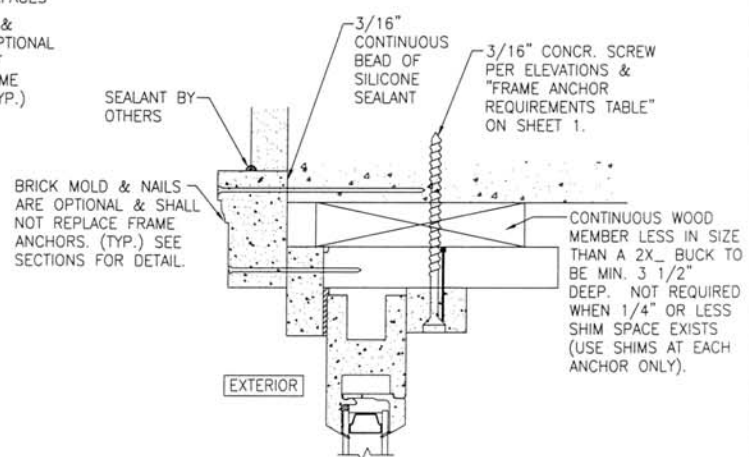
TYPICAL GLAZING DETAIL



SECTION B  
SCALE: 1/2 FULL



OPTIONAL CLIP MOUNT DETAIL  
HEAD SECTION SHOWN, SIDES AND SILL SIMILAR



OPTIONAL DIRECT MOUNT DETAIL  
TO BLOCK OR CONCRETE WITH SPACER OR SHIM  
HEAD SECTION SHOWN, SIDES AND SILL SIMILAR

DRAWN BY: K.P.S.		CHECKED BY: M.W.S.	
PLOT: 1=2		DATE: 03/28/04	
DATE			
BY			
NO.	REVISION	DESCRIPTION	
LEGEND DOUBLE HUNG IN-SASH TRANSOM WINDOW			
MANUFACTURER			
WINDSOR WINDOWS & DOORS			
900 S. 19TH STREET			
WEST DES MOINES, IA 50265			
800-218-6186			
CONSULTANTS			
W. W. SCHAEFER ENGINEERING & CONSULTING, P.A.			
8800 N. HOLLAND TRAIL, SUITE C-204			
PALM BEACH GARDENS, FL 33410			
PHONE: 561-775-4902 FAX: 561-775-4903			
DRAWING TITLE			
LEGEND DOUBLE HUNG IN-SASH TRANSOM WINDOW			
CERTIFICATION			
APR 15 2004			
DRAWING NO. 1275			
SHEET NO. 2 OF 2			
WARREN W. SCHAEFER, P.E.			
P.E. NO. 44135			