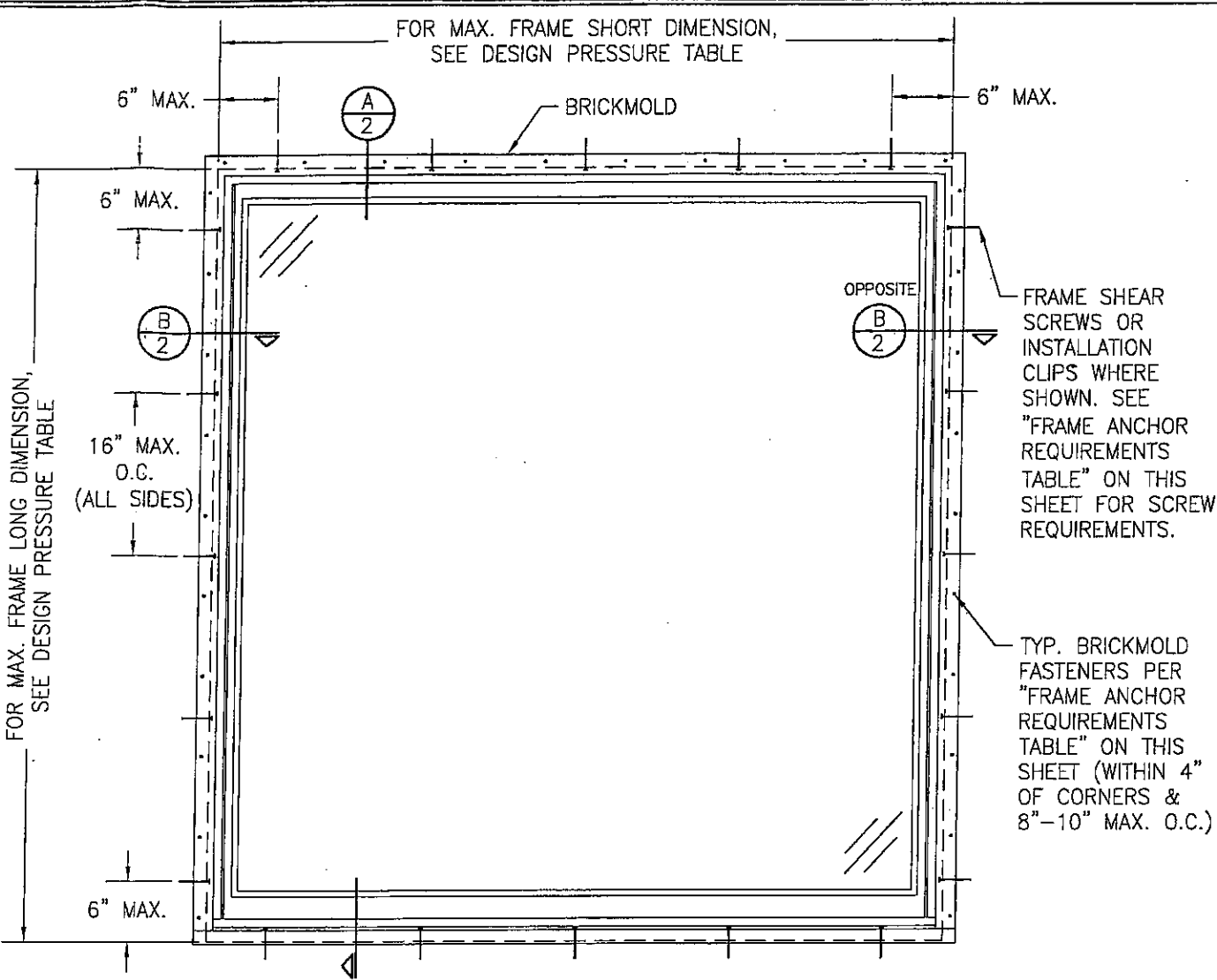


FRAME ANCHOR REQUIREMENTS TABLE			
OPENING TYPE (SUBSTRATE)	FRAME/CLIP/BRICKMOLD TO OPENING FASTENER TYPE	MINIMUM EMBED	MINIMUM EDGE DIST.
BRICKMOLD FASTENERS (SIDES & HEAD)			
MIN. 2X4 WOOD FRAME OR BUCK (MIN. GR. 3 & G=0.55)	NO. 6 X 1 1/2" SMS (FLAT HEAD)	1 3/8"	1/2"
MIN. 2X4 WOOD FRAME OR BUCK (MIN. GR. 3 & G=0.55)	10D GALV. FINISH NAILS	1 3/8"	1/2"
INSTALLATION CLIP SCREWS			
MIN. 2X4 WOOD FRAME OR BUCK (MIN. GR. 3 & G=0.55)	NO. 8 X 1 1/2" SMS	1 3/8"	1/2"
FRAME SHEAR SCREWS			
MIN. 2X4 WOOD FRAME OR BUCK (MIN. GR. 3 & G=0.55)	NO. 10 SMS OR WOOD SCREW	1 1/4"	3/4"

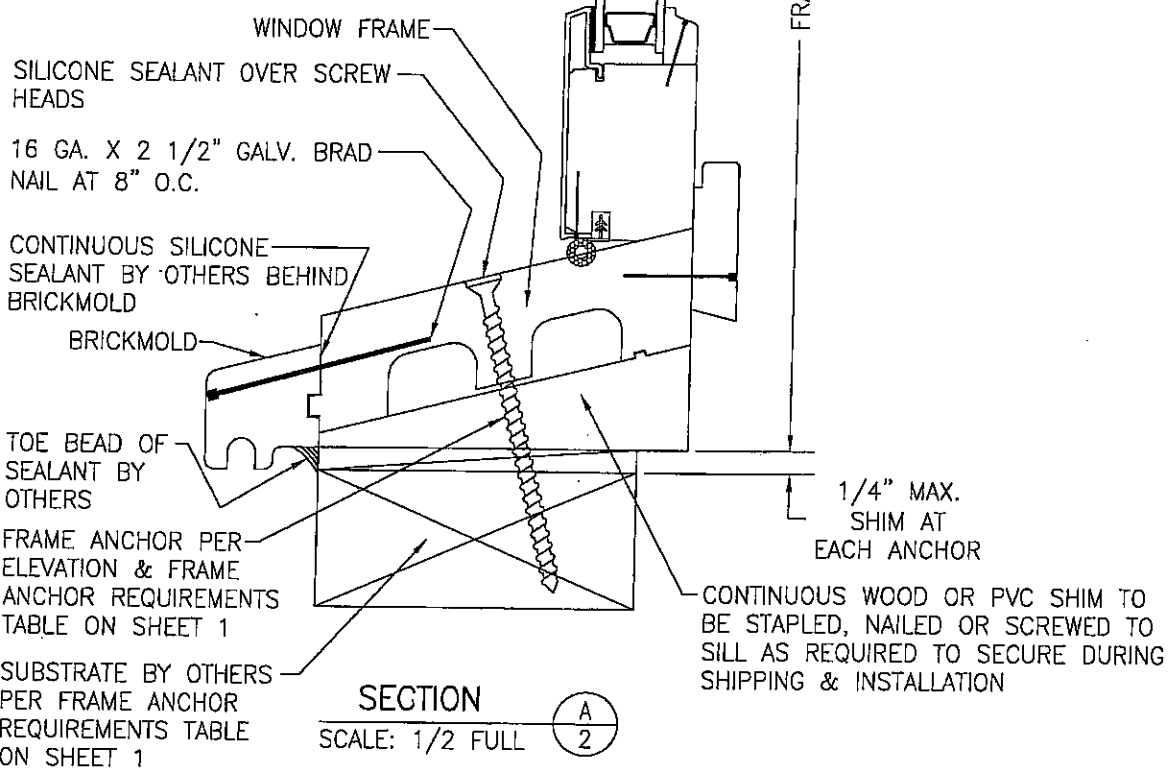
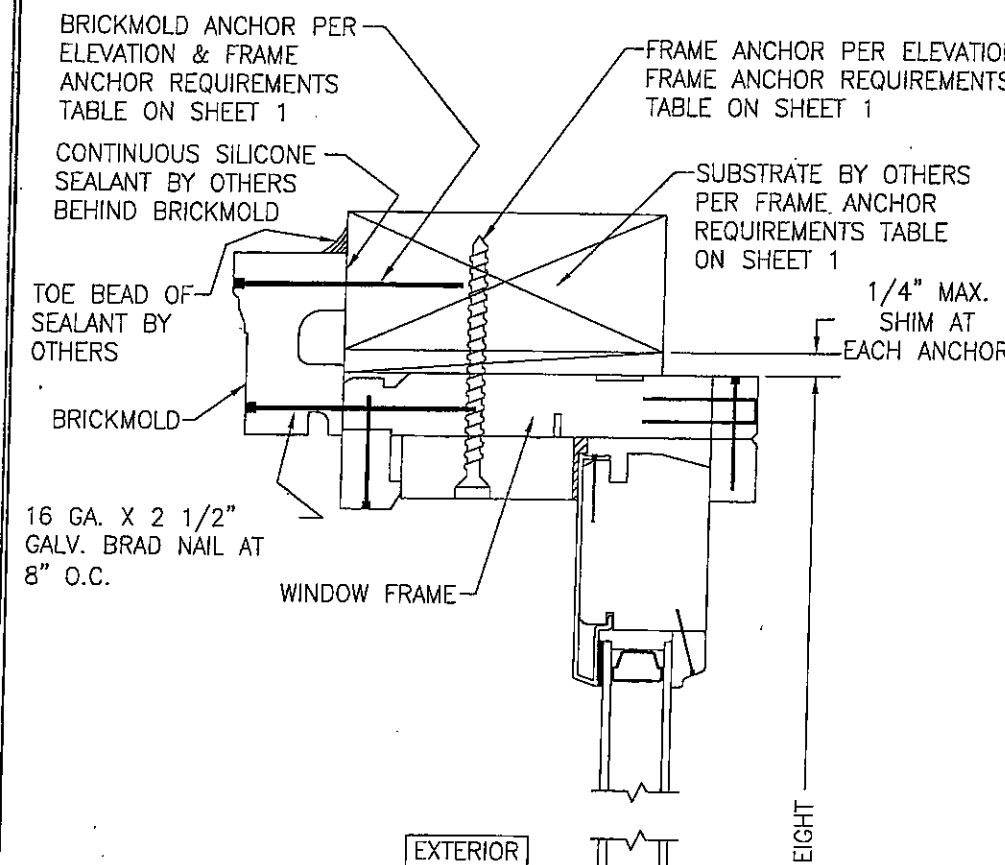
- GENERAL NOTES**
- BUCKING, OPENINGS & BUCKING FASTENERS MUST BE PROPERLY DESIGNED & INSTALLED TO TRANSFER WIND LOADS TO THE STRUCTURE.
  - ALL ANCHORS SHALL BE IN ACCORDANCE WITH THESE DRAWINGS & MAY NOT VARY UNLESS SPECIFICALLY MENTIONED ON THE DRAWINGS.
  - THESE WINDOW SYSTEM INSTALLATIONS HAVE BEEN DESIGNED IN ACCORDANCE WITH & MEET THE REQUIREMENTS OF THE 2004 FLORIDA BUILDING CODE (F.B.C.) FOR NON-HVHZ (NON-HIGH VELOCITY HURRICANE ZONES).
  - THESE WINDOW SYSTEMS ARE NON-IMPACT RATED & MUST BE SHUTTERED WHERE REQUIRED BY CODE.
  - ALL WINDOW SIZES SPECIFIED ARE AS CONTROLLED BY THE TESTED UNITS.
  - TO THE BEST OF OUR KNOWLEDGE, THE WINDOWS SHOWN HEREIN ARE CERTIFIED AND/OR QUALITY ASSURED BY A FLORIDA STATE APPROVED CERTIFICATION/QA ENTITY & SHALL BE LABELED IN ACCORDANCE WITH THE STATE CODE & CHAPTER 9B-72 DEPARTMENT OF COMMUNITY AFFAIRS-FLORIDA BUILDING COMMISSION SPECIFICATIONS. BY LABELING THE WINDOW, THE MANUFACTURER CONFIRMS THAT THE PRODUCT IS ASSEMBLED IN ACCORDANCE WITH THEIR RESPECTIVE QA & TESTING REPORTS.
  - ALL FRAME ANCHORS SECURING WINDOW FRAME TO PRESSURE TREATED BUCKS OR WOOD FRAMING SHALL BE CAPABLE OF RESISTING CORROSION CAUSED BY THE PRESSURE TREATING CHEMICALS IN THE WOOD.
  - ALL ANCHORS SHALL BE INSTALLED AS SPECIFIED ON THESE DRAWINGS. SPECIFIED EMBEDMENT TO BASE MATERIAL SHALL BE BEYOND WALL FINISH OR STUCCO.
  - THIS DRAWING CERTIFIES INSTALLATION ONLY (NOT MANUFACTURING OR WEATHER PROOFING OF THE DOOR). CERTIFICATION OF THESE WINDOW INSTALLATIONS SHALL BE CONSIDERED VOID IF ANY OF THE FOLLOWING APPLY:
    - IF THESE WINDOWS ARE INSTALLED BY ANYONE OTHER THAN A LICENSED CONTRACTOR EXPERIENCED WITH WINDOW INSTALLATIONS.
    - IF THE WINDOWS ARE INSTALLED WITHOUT A PERMIT FROM THE APPLICABLE LOCAL BUILDING DEPARTMENT.
    - IF THE WINDOWS INSTALLATION IS NOT INSPECTED EITHER BY THE APPLICABLE LOCAL BUILDING DEPARTMENT INSPECTOR OR ANOTHER PROFESSIONAL LICENSED TO PERFORM INSPECTIONS.
  - THESE INSTALLATIONS ARE BASED ON TESTING & RATIONAL ANALYSIS. TEST REPORTS CONSIDERED WITH THIS CERTIFICATION ARE REPORT NO. WIN043-11-01-71632 BY STORK TWIN CITY TESTING CORP.



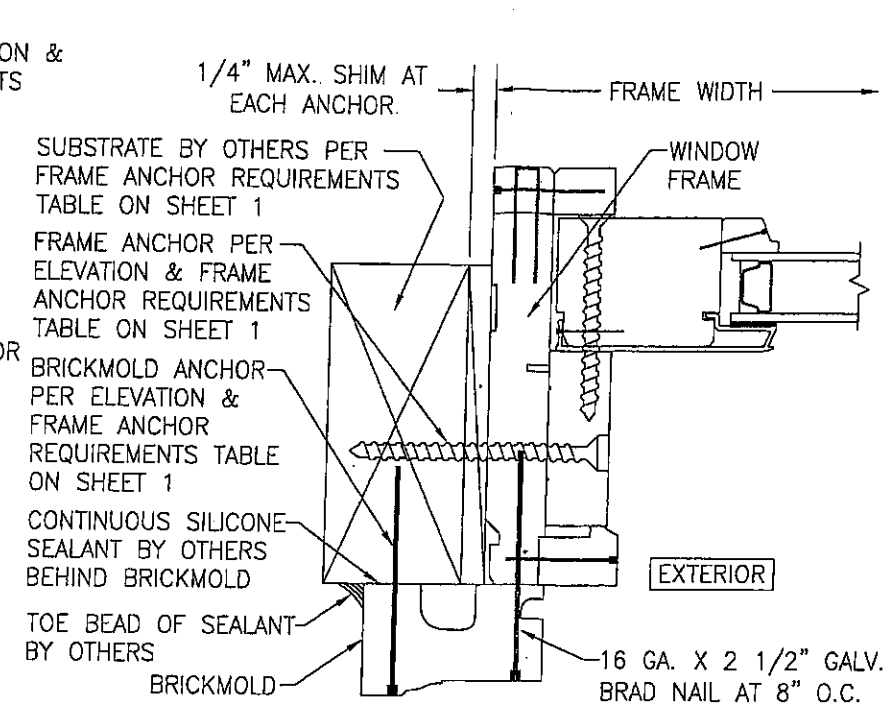
EXTERIOR ELEVATION  
SINGLE DOUBLE HUNG PICTURE WINDOW  
SCALE: 3/4"=1'-0"

ALLOWABLE DESIGN PRESSURE		
MAX. FRAME LONG DIMENSION	MAX. FRAME SHORT DIMENSION	ALLOWABLE PRESSURE
76"	50"	+/-50 PSF
77"	74"	+/-30 PSF
NOTE: PRESSURES APPLY TO INSTALLATION ONLY & NOT WINDOW ASSEMBLY CONDITIONS		

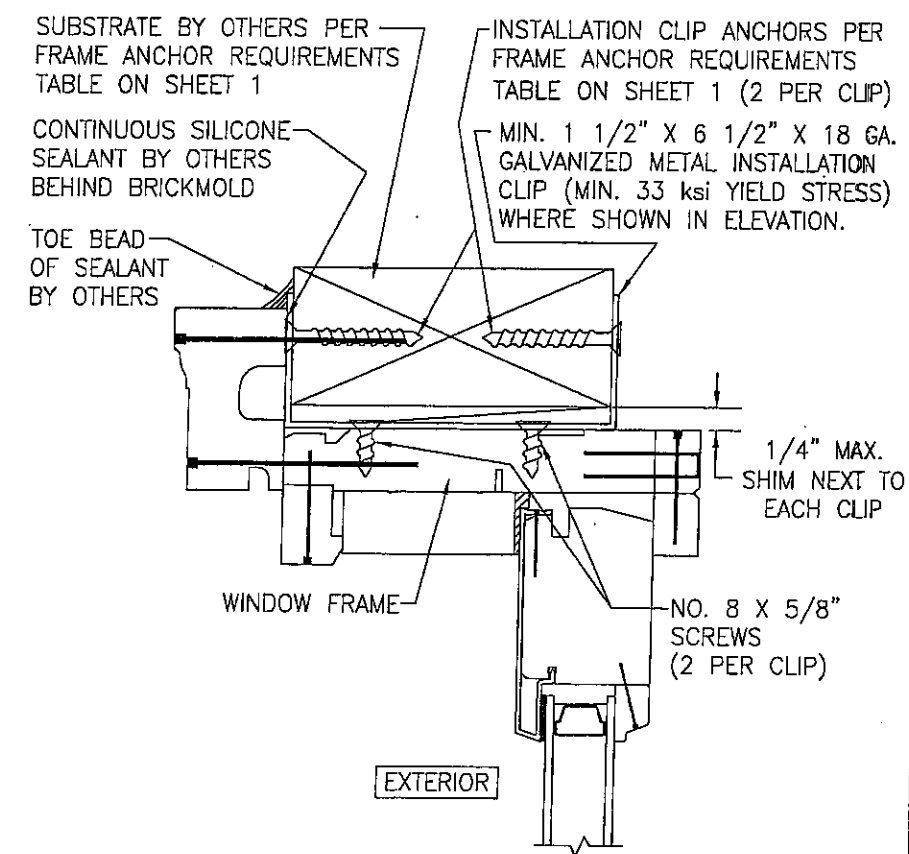
DRAWN BY: W.R.M.		CHECKED BY: W.W.S.	
PLOT: 1=16		DATE: 10/10/07	
NO.	REVISION	DESCRIPTION	DATE
DRAWING TITLE: LEGEND HBR NON-IMPACT DOUBLE HUNG PICTURE WINDOW CONSULTANTS: W. W. SCHAEFER ENGINEERING & CONSULTING, P.A. 8895 N. MILITARY TRAIL, SUITE C-204 PALM BEACH GARDENS, FL 33410 PHONE: 561-775-4902 FAX: 561-775-4903 MANUFACTURER: WINDSOR WINDOWS & DOORS 900 S. 19TH STREET WEST DES MOINES, IA 50265 800-218-6186			
CERTIFICATION: OCT 19 2007 WARREN W. SCHAEFER, P.E. P.E. NO. 44135			
DRAWING NO. 1560		REV.	
SHEET NO. 1		OF 2	



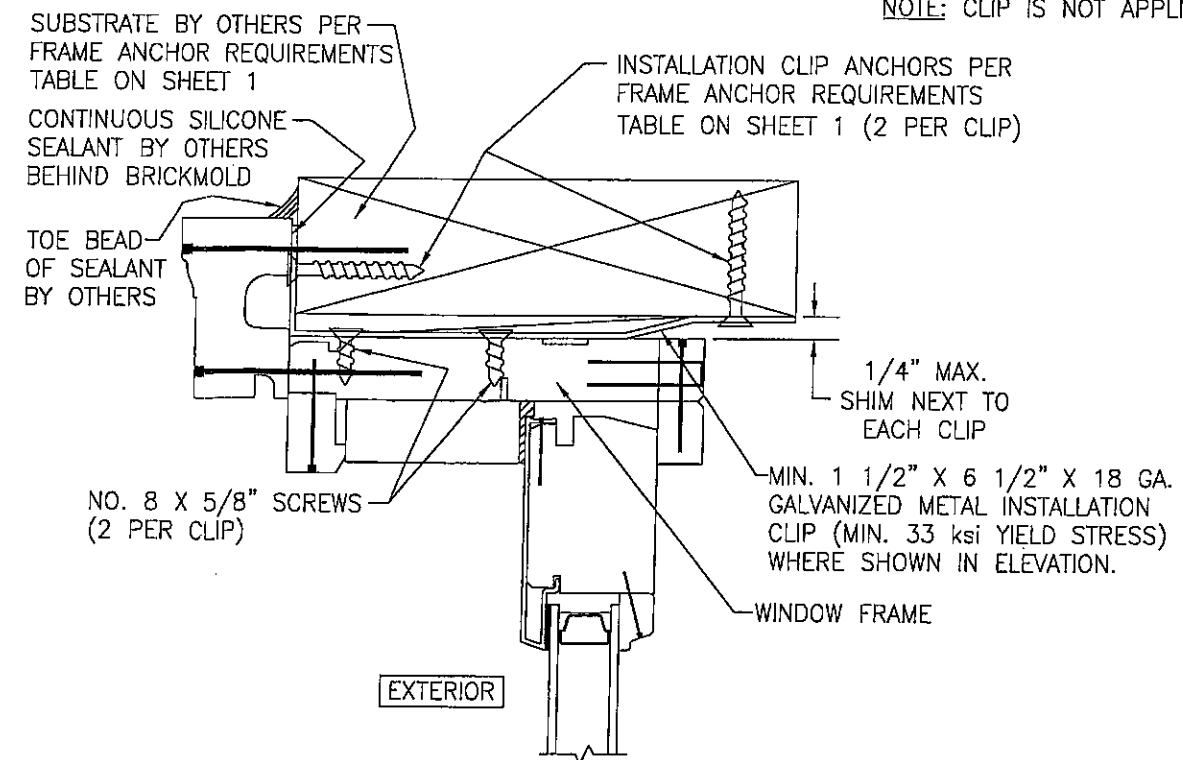
SECTION A  
SCALE: 1/2 FULL



SECTION B  
SCALE: 1/2 FULL



OPTIONAL INSTALLATION CLIP MOUNT DETAIL 1  
(HEAD SECTION SHOWN; SIDES ARE INSTALLED THE SAME)  
(FOR DETAIL NOT SHOWN, SEE OTHER SECTIONS)  
NOTE: CLIP IS NOT APPLICABLE AT SILL



OPTIONAL INSTALLATION CLIP MOUNT DETAIL 2  
(HEAD SECTION SHOWN; SIDES ARE INSTALLED THE SAME)  
(FOR DETAIL NOT SHOWN, SEE OTHER SECTIONS)  
NOTE: CLIP IS NOT APPLICABLE AT SILL

DRAWN BY: W.R.M.		CHECKED BY: W.W.S.	
PLOT: 1=2		DATE: 10/10/07	
NO.	REVISION	DESCRIPTION	DATE
<p>LEGEND HBR NON-IMPACT DOUBLE HUNG PICTURE WINDOW</p> <p>CONSULTANTS: W. W. SCHAEFER ENGINEERING &amp; CONSULTING, P.A. 8895 N. MILITARY TRAIL, SUITE C-204 PALM BEACH GARDENS, FL 33410 PHONE: 561-775-4902 FAX: 561-775-4903</p> <p>MANUFACTURER: WINDSOR WINDOWS &amp; DOORS 102 MAIN STREET WEST DES MOINES, IA 50265 800-218-6186</p>			
<p>CERTIFICATION</p> <p>OCT 19 2007</p>		<p>WARREN W. SCHAEFER, P.E. P.E. NO. 44135</p>	
DRAWING NO. 1560		REV.	
SHEET NO. 2 OF 2			



# **CBUCK Engineering**

**Specialty Structural Engineering**

*CBUCK, Inc. Florida Certificate of Authorization # 8064*

**Validation  
of  
Installation Instructions  
for  
Windsor Windows & Doors  
Windsor Series**

- 1. "Legend HBR Casement Picture Window"**
- 2. "Legend HBR Double-Hung Picture Window"**

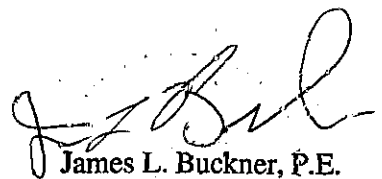
**Florida Product Approval  
# FL 10087.1-2**

**In compliance with  
Florida Building Code 2004**

**Prepared for:  
Windsor Windows & Doors  
900 S. 19<sup>th</sup> Street  
West Des Moines, IA 50265**

**Prepared by:  
James L. Buckner, P.E.  
Florida Professional Engineer # 31242  
Florida Validation ANE ID: 1916  
Report No. 07-303-3-VR  
Date: 12 / 20 / 07**

Contents:  
Validation Report      Pages 1 – 2

  
**James L. Buckner, P.E.  
Florida P.E. # 31242  
12/20/07**



# CBUCK Engineering

---

**Specialty Structural Engineering***CBUCK, Inc. Florida Certificate of Authorization # 8064*

**Manufacturer:** Windsor Windows & Doors

**Product(s) Name:**

1. "Legend HBR Casement Picture Window"
2. "Legend HBR Double-Hung Picture Window"

**Reviewed** Drawings by Warren W. Schaefer, P.E. (Florida P.E. #44135)

**Installation Instructions:**

1. Legend HBR Casement Picture Window  
Drawing No. 1562, Sheets 1-2 , Signed & Sealed 10/19/07
2. Legend HBR Double-Hung Picture Window  
Drawing No. 1560, Sheets 1-2 , Signed & Sealed 10/19/07

**Installation Instructions Engineer:** Warren W. Schaefer, P.E. (Florida P.E. #44135)

**Technical Validation Statement:** A review of the above referenced installation instructions and supporting data including test reports, anchor calculations, alternate supporting substrates and referenced technical documents demonstrate results equivalent or superior with the tested samples. The additional anchors have been verified to comply with acceptable standards of engineering principles and demonstrate compliance with Florida Building Code, 2004 with Supplements.

**Validation Compliance:** The installation instructions comply with the technical validation requirements of Rule 9B-72.080(2)(c).

**Document Filing:** A copy of this validation report, above referenced installation drawings and all supporting data will be filed with CBUCK Engineering as long as this validation is effective.

**Reference Documents:**

1. AAMA Test Report (FBC Organization #CER ID:1498)  
By Stork Twin City Testing Corp.  
Report #: WIN043-11-02-80786.2rev, Report Date: 10/19/07
2. AAMA Test Report (FBC Organization #CER ID:1498)  
By Stork Twin City Testing Corp.  
Report #: WIN043-11-01-71632, Report Date: 11/18/05