

EXTERIOR ELEVATION  
FIXED WINDOW  
NOT TO SCALE

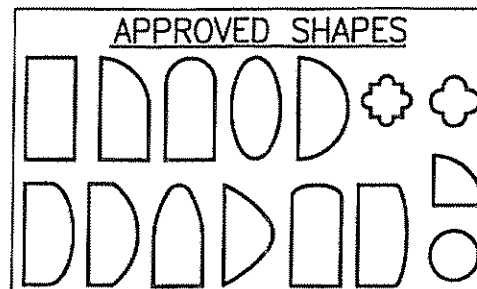
BRICK MOLD IS OPTIONAL & MAY BE REMOVED IF REQUIRED BY OPENING CONDITIONS. (BRICK MOLD SHALL NOT ACT AS A SUBSTITUTE FOR THE FRAME ANCHORS SPECIFIED)

#### ALLOWABLE DESIGN PRESSURE (SINGLE WINDOWS)

POSITIVE	NEGATIVE
50 PSF	50 PSF

APPROVED FOR USE IN WIND ZONES 1, 2 & 3 (WIND SPEEDS 140 MPH & LESS)

RECTANGULAR WINDOWS SHOWN. ANCHORING OF SHAPED WINDOWS IS THE SAME WITH REQUIRED ANCHOR SPACING ALONG THE FRAME CIRCUMFERENCE BEING THE SAME AS SPECIFIED FOR A STRAIGHT FRAME.



#### NOTES:

1. OTHER SHAPES MAY APPLY PROVIDING THEY ARE SIMILAR TO THOSE SHOWN & HAVE CORNER CONSTRUCTION AS DESCRIBED ON THIS SHEET.
2. ALL SHAPED UNITS MUST FIT INScribed INTO THE ALLOWABLE RECTANGULAR UNITS & BE GOVERNED BY THE ALLOWABLE PRESSURE OF THE RESPECTIVE RECTANGULAR UNIT.

#### WINDOW ALLOWABLE SIZE TABLE

##### MAXIMUM FRAME DIMENSIONS

SHORT SIDE (IN.)	LONG SIDE (IN.)
(1)(2) 49 3/8	72 3/4
43 3/8	82 3/4
(1) 37 3/8	96
31 3/8	114
25 3/8	142

- (1) = TESTED SIZE  
(2) = WINDOW SHORT SIDE DIMENSION MAY NOT EXCEED 48"

BRICK MOLD IS OPTIONAL & MAY BE REMOVED IF REQUIRED BY OPENING CONDITIONS. (BRICK MOLD SHALL NOT ACT AS A SUBSTITUTE FOR THE FRAME ANCHORS SPECIFIED)

TYP. FRAME SCREW OR INSTALLATION CLIP PER SINGLE WINDOW ELEVATION

FIXED WINDOW TO FIXED WINDOW WHEN WINDOW WIDTHS ARE LESS THAN OR EQUAL TO THE MULLION LENGTH  
(SEE MULLION LOAD TABLE ON SHEET 2)

(DOUBLE WINDOW SHOWN. MORE THAN 2 WINDOWS MAY BE MULLED TOGETHER IN ONE DIRECTION INTO ONE OPENING.)

NOTE: MULLION MAY BE HORIZONTAL OR VERTICAL. SEE SINGLE WINDOW ELEVATION FOR DETAIL NOT SHOWN

#### FRAME ANCHOR REQUIREMENTS TABLE

##### INSTALLATION CLIP ANCHORS

OPENING TYPE (SUBSTRATE)	JAMB/CLIP TO OPENING FASTENER TYPE	MINIMUM EMBED	MINIMUM EDGE DIST.
2X_ WOOD FRAME OR BUCK	NO. 8 X 1 1/2" SMS SCREWS	1 1/4"	1/2"

##### SHEAR SCREWS

2X_ WOOD FRAME OR BUCK	NO. 10 SMS SCREW	1 1/4"	3/4"
CMU/CONCRETE	(1) 3/16" CONCRETE SCREW	1 1/4"	2"

(1) CONCRETE SCREWS SHALL BE ELCO OR ITW RAMSET/RED HEAD TAPCONS, HILTI KWIK-CON II OR POWERS RAWL TAPPER (HARDENED STEEL OR S.S.).

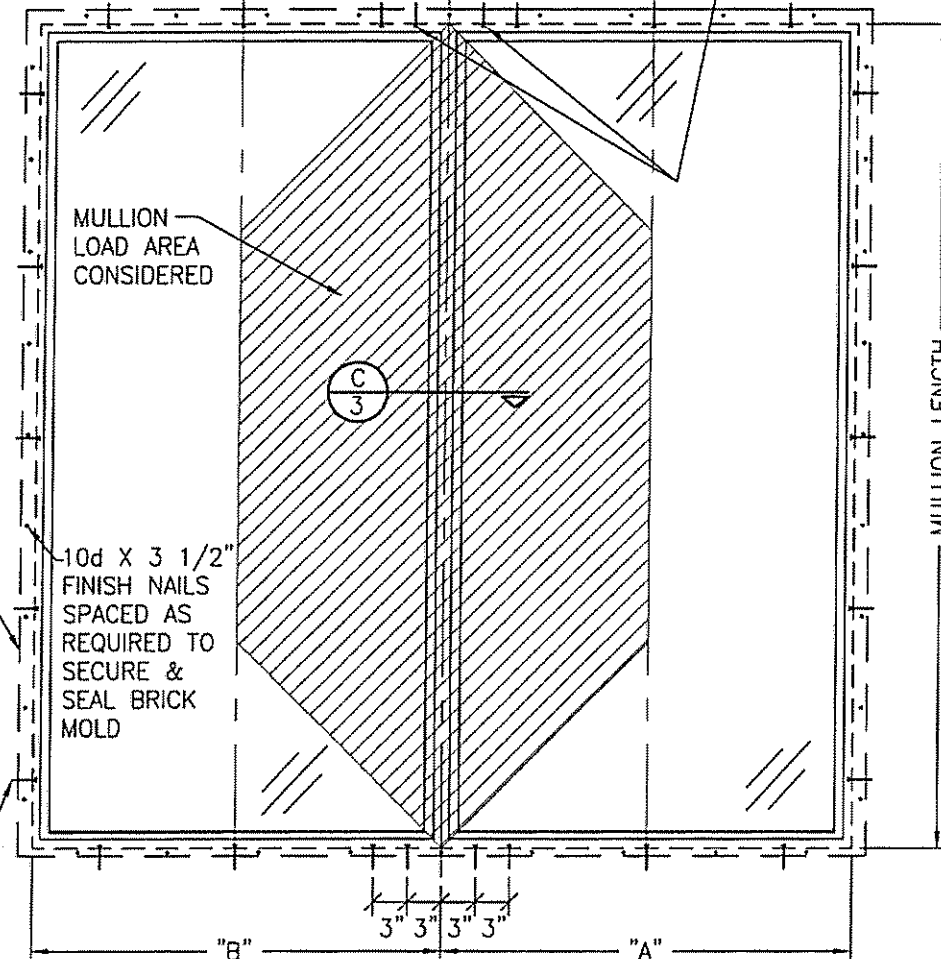
\* ANCHOR NOTE: FRAME MAY BE EITHER DIRECT MOUNTED TO THE OPENING, MOUNTED ONTO A CONTINUOUS WOOD SPACER, OR ANCHORED TO A MIN. 2x4 NO. 3 SOUTHERN PINE WOOD BUCK. WHEN ANCHORED TO A 2x4 BUCK, NO. 10 SHEAR SCREWS OR INSTALLATION CLIPS SHALL BE USED. WHEN DIRECT MOUNTED OR MOUNTED WITH SPACER, 3/16" CONCRETE SCREWS SHALL BE USED. SEE "ANCHOR REQUIREMENTS TABLE" FOR EMBED REQUIREMENTS.

CENTER OF  
WINDOW

LOAD WIDTH  
= (A+B)/2

CENTER OF  
WINDOW

ADDITIONAL SHEAR SCREWS OR  
INSTALLATION CLIPS WHERE  
SHOWN AT MULLION ENDS. SEE  
"FRAME ANCHOR REQUIREMENTS  
TABLE" ON THIS SHEET FOR  
ANCHOR REQUIREMENTS.



#### GENERAL NOTES

1. THESE WINDOW SYSTEMS HAVE BEEN TESTED, ANALYZED & APPROVED FOR DESIGN PRESSURES NOT TO EXCEED THOSE SHOWN IN THE "ALLOWABLE DESIGN PRESSURE" TABLE.
2. BUCKING, OPENINGS & BUCKING FASTENERS MUST BE PROPERLY DESIGNED & INSTALLED TO TRANSFER WIND LOADS TO THE STRUCTURE.
3. ALL HARDWARE & FASTENERS SHALL BE IN ACCORDANCE WITH THESE DRAWINGS & MAY NOT VARY UNLESS SPECIFICALLY MENTIONED ON THE DRAWINGS.
4. THESE WINDOW SYSTEMS HAVE BEEN DESIGNED IN ACCORDANCE WITH & MEET THE REQUIREMENTS OF THE 2004 FLORIDA BUILDING CODE (F.B.C.) FOR NON-HVHZ (HIGH VELOCITY HURRICANE ZONES).
5. THESE WINDOWS HAVE BEEN TESTED IN ACCORDANCE WITH AAMA/NWDA 101/I.S. 2-97 & VOLUNTARY & ASTM E1886/1996. REFERENCE TEST REPORT NO. 52933.01-201-44 BY ARCHITECTURAL TESTING, INC. (ATI) AS APPLICABLE TO THESE DRAWINGS.
6. THESE WINDOW SYSTEMS ARE WIND ZONE 3 IMPACT RATED & NEED NOT BE SHUTTERED.
7. ALL WINDOW SIZES SPECIFIED AS ALLOWABLE IN THE "WINDOW ALLOWABLE SIZE TABLE" ARE AS CONTROLLED BY THE TESTED UNITS.
8. GLASS SHALL BE AS SPECIFIED IN THE GLAZING DETAIL(S).
9. TO THE BEST OF OUR KNOWLEDGE, THE WINDOWS SHOWN HEREIN ARE CERTIFIED AND/OR QUALITY ASSURED BY A FLORIDA STATE APPROVED CERTIFICATION/QA ENTITY & SHALL BE LABELED IN ACCORDANCE WITH THE STATE CODE & CHAPTER 9B-72 DEPARTMENT OF COMMUNITY AFFAIRS-FLORIDA BUILDING COMMISSION SPECIFICATIONS. BY LABELING THE WINDOW, THE MANUFACTURER CONFIRMS THAT THE PRODUCT IS ASSEMBLED IN ACCORDANCE WITH THEIR RESPECTIVE QA & TESTING REPORTS.
10. THESE DRAWINGS SHOW ALL APPLICABLE ELEVATION, COMBINATION, INSTALLATION & COMPARATIVE ANALYSIS CONDITIONS AS DETERMINED THROUGH TESTING & ENGINEERING RATIONAL ANALYSIS. WINDOW ASSEMBLY SHALL BE IN ACCORDANCE WITH THESE DRAWINGS, THE MANUFACTURER'S QUALITY ASSURANCE SPECIFICATIONS & TESTING REPORTS.
11. IF ANY DEVIATION OCCURS BETWEEN THE INFORMATION ON THIS DRAWING & THE PRODUCT LABEL, THIS DRAWING SHALL CONTROL.
12. ALL FRAME ANCHORS SECURING WINDOW/DOOR FRAME TO PRESSURE TREATED BUCKS OR WOOD FRAMING SHALL BE CAPABLE OF RESISTING CORROSION CAUSED BY THE PRESSURE TREATING CHEMICALS IN THE WOOD.

#### MULTIPLE UNIT NOTES:

1. THE MAXIMUM ALLOWABLE PRESSURE FOR A COMBINED UNIT IS RESTRICTED BY THE LESSER OF THE INDIVIDUAL WINDOW ALLOWABLE PRESSURE OR THE ALLOWABLE MULLION PRESSURE. SEE MULLION LOAD TABLE ON SHEET 2 FOR ALLOWABLE UNIT PRESSURE.
2. WINDOWS MAY BE STACKED HORIZONTAL OR VERTICAL. (IF VERTICALLY STACKED, MANUFACTURER MUST INSURE THAT THE DEAD WEIGHT OF THE WINDOWS DOES NOT CAUSE ANY WINDOW FAILURES OR DEFORMATIONS)

#### FRAME CORNER CONSTRUCTION

STANDARD CORNERS: HEAD JAMB IS BUTTED TO SIDE JAMB & SECURED WITH (3) STAPLES PER CORNER. SILL JAMB IS BUTTED TO SIDE JAMB & SECURED WITH (3) 3/8" X 1 1/2" STAPLES & (1) NO. 7 X 2" SMS PER CORNER. ALL CORNERS SEALED WITH SILICONE SEALANT.  
MULLION CORNERS: BUTTED & SECURED WITH (3) STAPLES PER CORNER & (3) NO. 8 X 2 1/2" SCREWS THROUGH ONE JAMB INTO THE OTHER.

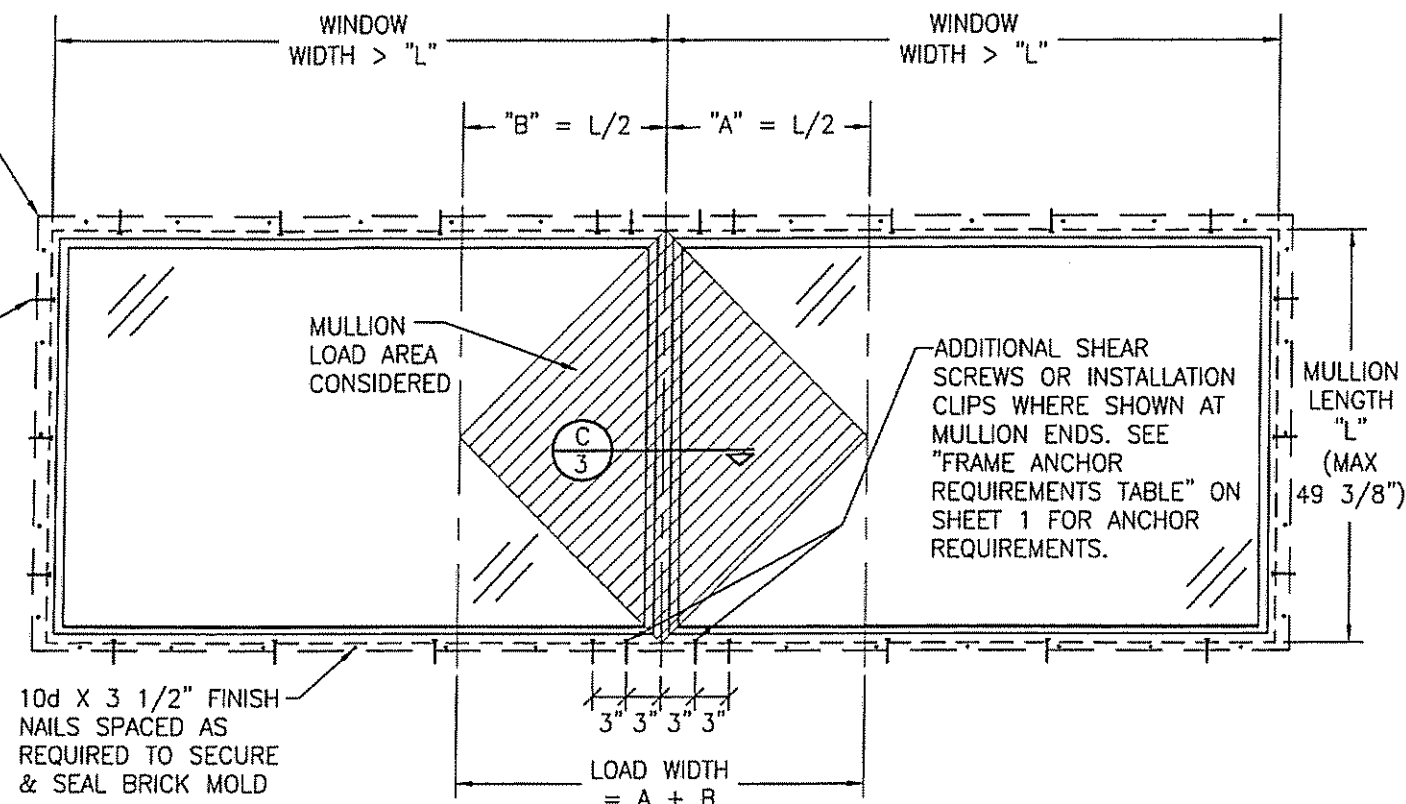
DRAWN BY: K.P.S.		CHECKED BY: W.W.S.	
PLOT: 1-15		DATE: 02/10/05	
NO.	REVISION DESCRIPTION	DATE	BY
1	UPDATE TO 2004 CODE COMPLIANT	08/10/05	WWS
LEGEND IMPACT RECTANGULAR & RADIUS DIRECT SET WINDOW			
MANUFACTURER WINDSOR WINDOWS & DOORS 900 S. 19TH STREET WEST DES MOINES, IA 50265 800-218-6186			
CONSULTANTS W. W. SCHAEFER ENGINEERING & CONSULTING, P.A. 8895 N. MILITARY TRAIL, SUITE C-204 PALM BEACH GARDENS, FL 33410 PHONE: 561-775-4902 FAX: 561-775-4903			
CERTIFICATION WARREN W. SCHAEFER, P.E. (P.E. NO. 44135)			
DRAWING NO. 1380		REV. A	
SHEET NO. 1		OF 3	

ALLOWABLE DESIGN PRESSURE FOR MULLED UNITS		
MAXIMUM MULLION LENGTH (IN.)	MAXIMUM LOAD WIDTH (IN.)	(1) ALLOWABLE PRESSURE (PSF)
76 3/4	49 3/8	34.5
	43 3/8	39.2
	37 3/8	45.5
	31 3/8	50.0
72 3/4	49 3/8	40.5
	43 3/8	46.1
	37 3/8	50.0
66 3/4	49 3/8	50.0

(1) ALLOWABLE PRESSURE IS FOR BOTH POSITIVE & NEGATIVE

BRICK MOLD IS OPTIONAL & MAY BE REMOVED IF REQUIRED BY OPENING CONDITIONS. (BRICK MOLD SHALL NOT ACT AS A SUBSTITUTE FOR THE FRAME ANCHORS SPECIFIED)

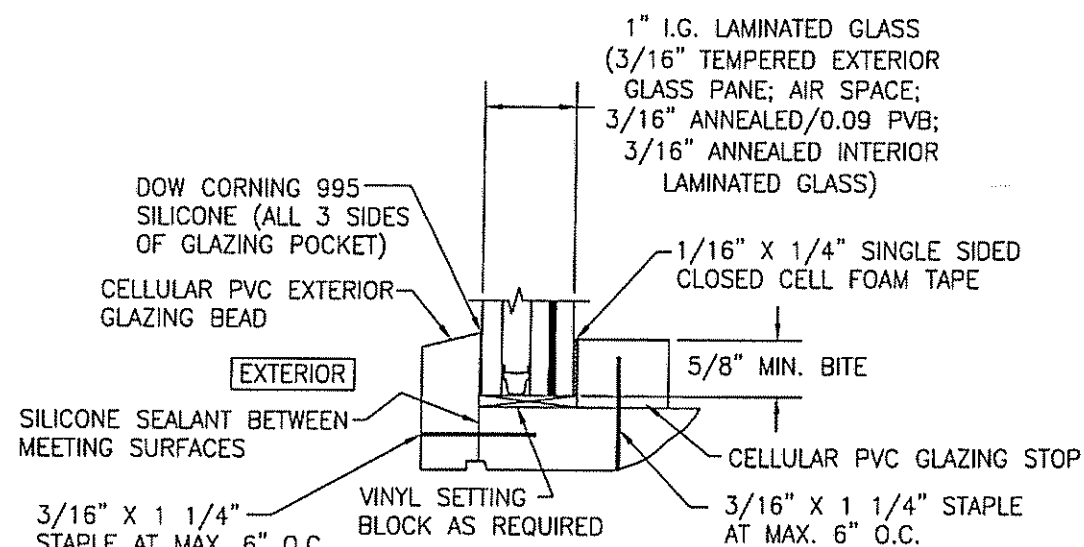
TYP. FRAME SCREW OR INSTALLATION CLIP PER SINGLE WINDOW ELEVATION



**FIXED WINDOW TO FIXED WINDOW WHEN WINDOW WIDTHS ARE GREATER THAN THE MULLION LENGTH**  
(SEE MULLION LOAD TABLE ON THIS SHEET)  
(DOUBLE WINDOW SHOWN. MORE THAN 2 WINDOWS MAY BE MULLED TOGETHER IN ONE DIRECTION INTO ONE OPENING.)

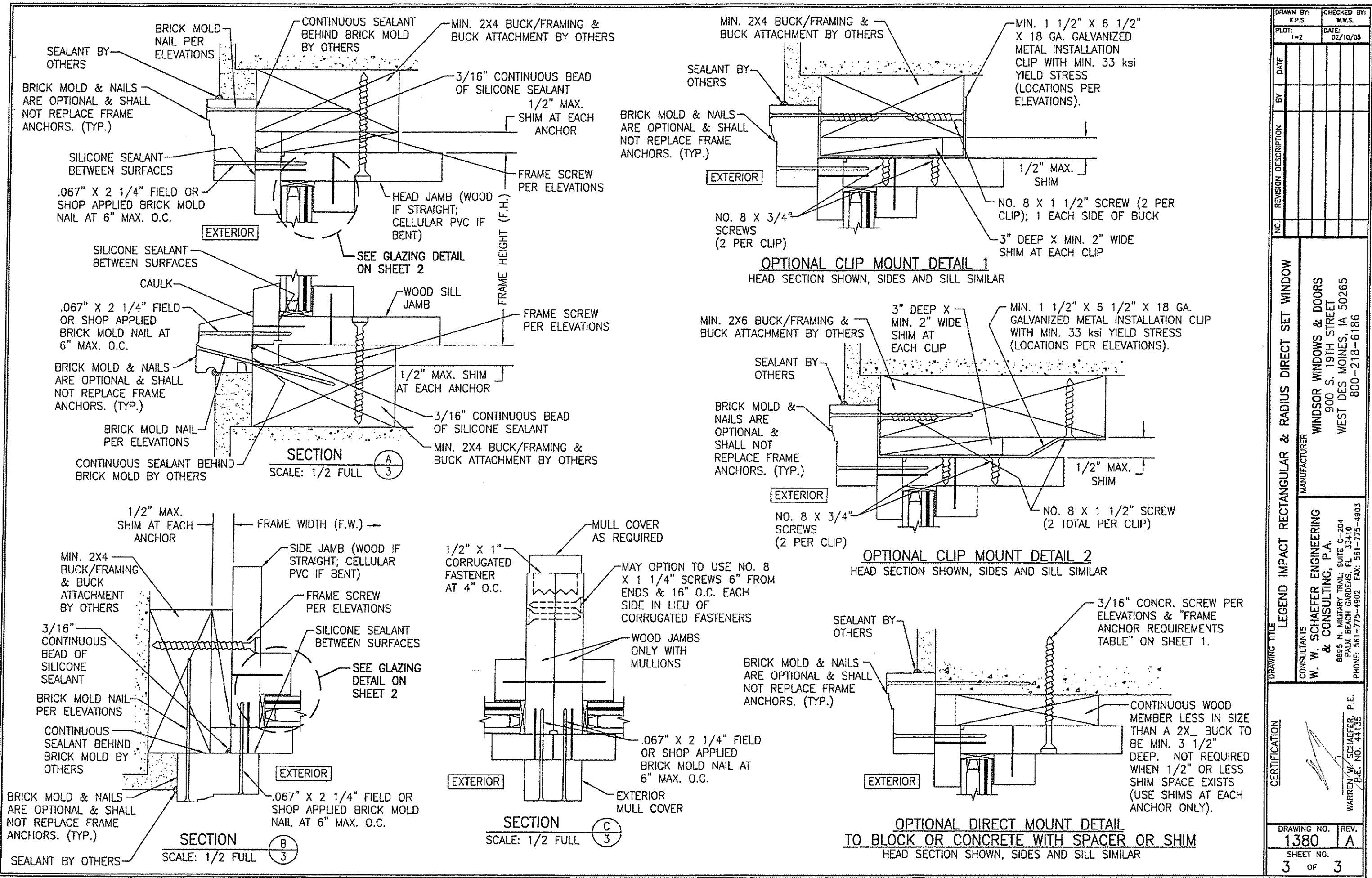
#### MULTIPLE UNIT NOTES:

1. THE MAXIMUM ALLOWABLE PRESSURE FOR A COMBINED UNIT IS RESTRICTED BY THE LESSER OF THE INDIVIDUAL WINDOW ALLOWABLE PRESSURE OR THE ALLOWABLE MULLION PRESSURE. SEE MULLION LOAD TABLE ON THIS SHEET FOR ALLOWABLE UNIT PRESSURE.
2. WINDOWS MAY BE STACKED HORIZONTAL OR VERTICAL. (IF VERTICALLY STACKED, MANUFACTURER MUST INSURE THAT THE DEAD WEIGHT OF THE WINDOWS DOES NOT CAUSE ANY WINDOW FAILURES OR DEFORMATIONS)



**GLAZING DETAIL**

DRAWN BY: K.P.S.		CHECKED BY: W.W.S.	
PLOT: 1=16		DATE: 02/10/05	
DATE	BY	REVISION DESCRIPTION	NO.
<p><b>DRAWING TITLE</b></p> <p>LEGEND IMPACT RECTANGULAR &amp; RADIUS DIRECT SET WINDOW</p>			
<p><b>CONSULTANTS</b></p> <p>W. W. SCHAEFER ENGINEERING &amp; CONSULTING, P.A.</p> <p>8895 N. MILITARY TRAIL, SUITE C-204 PALM BEACH GARDENS, FL 33410 PHONE: 561-775-4902 FAX: 561-775-4903</p>			
<p><b>MANUFACTURER</b></p> <p>WINDSOR WINDOWS &amp; DOORS</p> <p>900 S. 19TH STREET WEST DES MOINES, IA 50265 800-218-6186</p>			
<p><b>CERTIFICATION</b></p> <p>WARREN W. SCHAEFER, P.E. P.E. NO. 44135</p>			
DRAWING NO. 1380		REV. A	
SHEET NO. 2		OF 3	



DRAWING TITLE	LEGEND IMPACT RECTANGULAR & RADIUS DIRECT SET WINDOW	
	CONSULTANTS	
	W. W. SCHAEFER ENGINEERING & CONSULTING, P.A.	
DRAWING NO.	1380	
	SHEET NO.	
	3 OF 3	
REVISION	NO.	
	BY	
	DATE	
DRAWN BY:	K.P.S.	
	CHECKED BY:	
	W.W.S.	
PLOT:	1-2	
	DATE:	
	02/10/05	
MANUFACTURER	WINDSOR WINDOWS & DOORS	
	900 S. 19TH STREET	
	WEST DES MOINES, IA 50265	
PHONE:	561-775-4902	
	FAX: 561-775-4903	
	800-218-6186	
CERTIFICATION	WARREN W. SCHAEFER, P.E.	
	P.E. NO. 44135	
	8895 N. MILITARY TRAIL, SUITE C-204	
DRAWING NO.	1380	
	REV.	
	A	