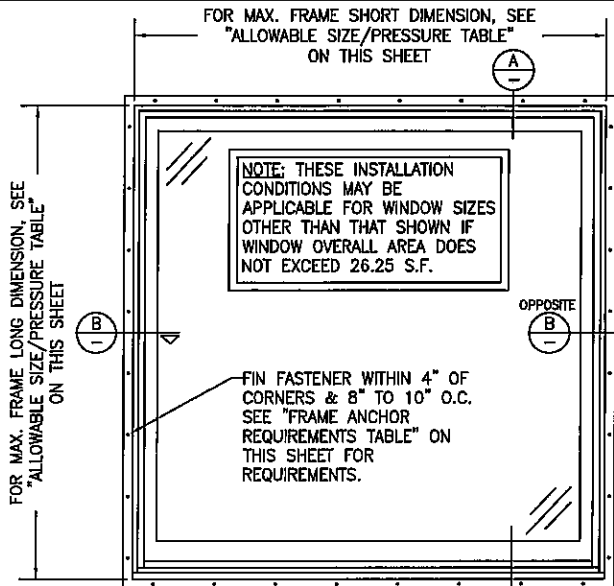


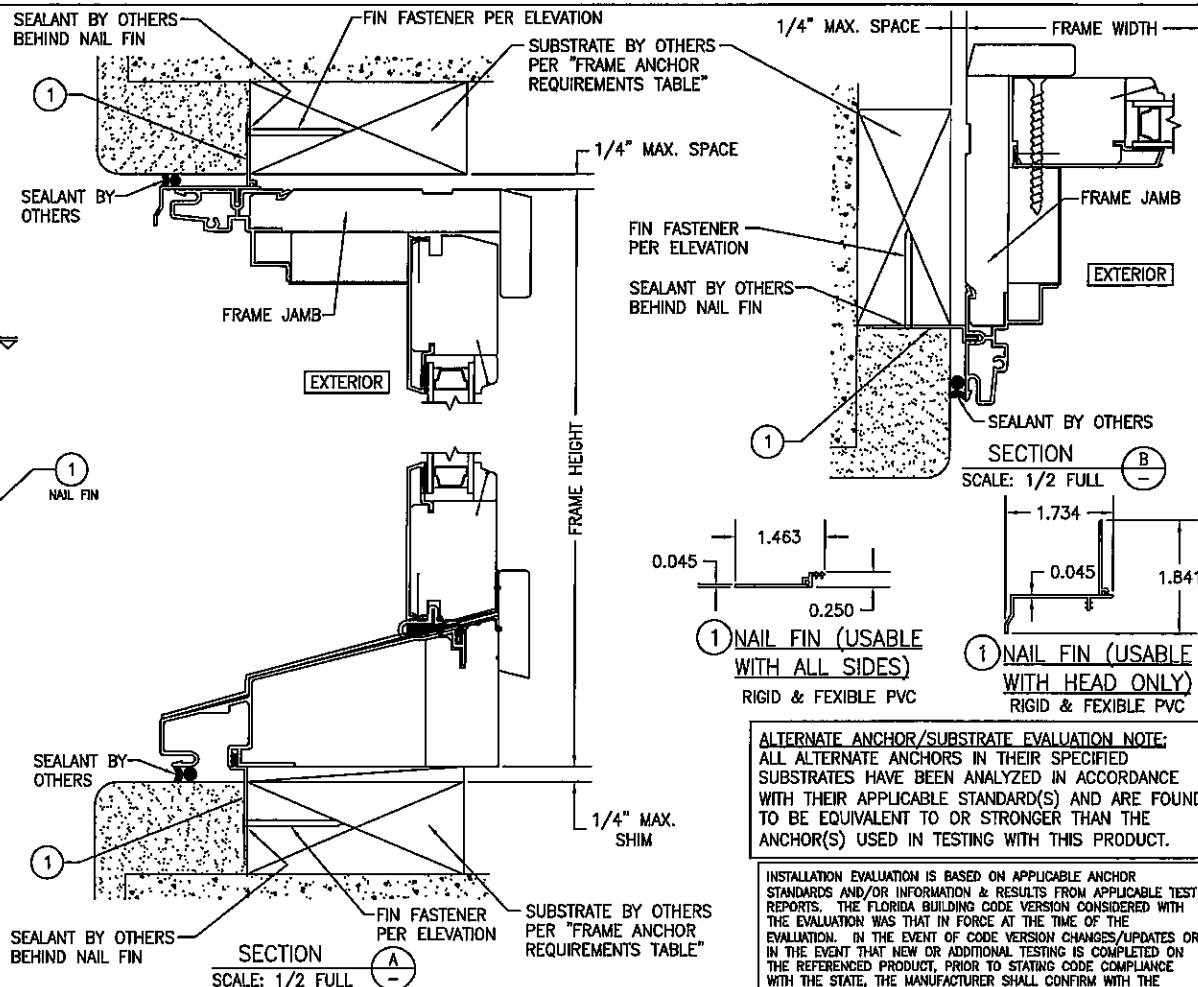
EXTERIOR ELEVATION:  SINGLE DOUBLE HUNG PICTURE WINDOW
SCALE: 3/4"=1'-0"

| ALLOWABLE WINDOW SIZE/PRESSURE TABLE | | |
|--|---|------------------------------|
| MAX. WINDOW FRAME LONG DIMENSION (IN.) | MAX. WINDOW FRAME SHORT DIMENSION (IN.) | ALLOWABLE PRESSURE (+/- PSF) |
| 76 1/2 | 73 1/2 | 30.0 |
| 61 1/2 | 61 1/2 | 40.0 |
| 76 3/4 | 49 1/2 | 50.0 |

PRESSURE SHOWN IN THIS TABLE IS FOR INSTALLATION CONDITIONS ONLY. THE GOVERNING DESIGN PRESSURE ON THE WINDOWS SHALL BE THE LESSER OF THAT SHOWN IN THE INDIVIDUAL WINDOW'S STATE APPROVAL OR THAT SHOWN IN THIS TABLE.

GENERAL NOTES:

- ALL FASTENERS SHALL BE IN ACCORDANCE WITH THESE DRAWINGS. SPECIFIED ANCHOR EMBED TO BASE MATERIAL SHALL BE BEYOND WALL FINISH OR STUCCO.
- OPENINGS, BUCKING & BUCKING FASTENERS MUST BE PROPERLY DESIGNED & INSTALLED TO TRANSFER WIND LOADS TO THE STRUCTURE.
- THESE NON-IMPACT RATED WINDOW SYSTEM INSTALLATIONS ARE IN ACCORDANCE WITH AND MEET THE REQUIREMENTS OF THE FLORIDA BUILDING CODE (FBC).
- ALL ANCHORS SECURING WINDOW FRAME TO PRESSURE TREATED BUCKS OR WOOD FRAMING SHALL BE CAPABLE OF RESISTING CORROSION CAUSED BY THE PRESSURE TREATING CHEMICALS IN THE WOOD.
- NO INCREASE IN ALLOWABLE STRESS HAS BEEN USED IN THE CERTIFICATION OF THESE INSTALLATIONS. WIND LOAD DURATION FACTOR $C_d = 1.6$ WAS USED FOR WOOD SCREW ANALYSIS ONLY.
- MATERIALS, INCLUDING BUT NOT LIMITED TO STEEL SCREWS, THAT COME INTO CONTACT WITH OTHER DISSIMILAR MATERIALS SHALL MEET THE REQUIREMENTS OF FLORIDA BUILDING CODE CHAPTER 20.
- TO THE BEST OF OUR KNOWLEDGE, THE WINDOWS SHOWN HEREIN ARE CERTIFIED & QUALITY ASSURED BY A FLORIDA STATE APPROVED CERTIFICATION/OA ENTITY & SHALL BE LABELED IN ACCORDANCE WITH THE FBC AND THE 98-72 FLORIDA BUILDING COMMISSION SPECIFICATIONS. WINDOW ASSEMBLY IS NOT PART OF THIS DRAWING AND SHALL BE IN ACCORDANCE WITH THE MANUFACTURER'S QUALITY ASSURANCE SPECIFICATIONS & TESTING REPORTS.
- CERTIFICATION OF THESE WINDOW INSTALLATIONS SHALL BE CONSIDERED VOID IF ANY OF THE FOLLOWING APPLY: 1) THEY ARE INSTALLED WITHOUT A BUILDING PERMIT FROM THE APPLICABLE LOCAL BUILDING DEPARTMENT. 2) IF THEY ARE INSTALLED BY ANYONE OTHER THAN A LICENSED CONTRACTOR EXPERIENCED WITH WINDOW INSTALLATIONS. 3) IF CHANGES HAVE OCCURRED TO THE PRODUCT'S CERTIFICATION ENTITY'S CERTIFICATE THAT CAUSE THESE INSTALLATIONS TO BE INCORRECT OR INCONSISTENT WITH WHAT HAS BEEN TESTED.
- THE LEAST DESIGN PRESSURE SPECIFIED EITHER IN THIS DRAWING OR IN THE PRODUCT'S CERTIFICATION SHALL CONTROL FOR THE INSTALLED WINDOW.
- THESE DRAWINGS CERTIFY THE WINDOW INSTALLATION ONLY. WATER PROOFING OF THE INSTALLED WINDOWS IS NOT PART OF THIS INSTALLATION CERTIFICATION. THAT RESPONSIBILITY SHALL BE THAT OF THE MANUFACTURER &/OR INSTALLER.



FRAME ANCHOR REQUIREMENTS TABLE

| NAILING FIN FASTENERS | | | |
|---|--------------------------------------|---------------|--------------------|
| OPENING TYPE (SUBSTRATE) | NAIL FIN TO OPENING FASTENER TYPE | MINIMUM EMBED | MINIMUM EDGE DIST. |
| MIN. 2X4 WOOD FRAME OR BUCK (MIN. GR. 3 & G=0.55) | (1) NO. 8 X 1 1/2" SMS | 1 1/4" | 1/2" |
| MIN. 2X4 WOOD FRAME OR BUCK (MIN. GR. 3 & G=0.55) | 1 3/4" X 11 GA. ROOFING NAIL | 1 1/2" | 1/2" |
| MIN. 1/8" THK A36 STEEL | (1) NO. 8 GR. 5 SELF TAP/DRILL SCREW | FULL | 1/2" |
| MIN. 1/8" THK 6063-T5 ALUM. | (1) NO. 8 GR. 5 SELF TAP/DRILL SCREW | FULL | 1/2" |

(1) WHEN SCREWS ARE USED WITH THE NAIL FIN, THEY MUST BE A WAFFLE HEAD SCREW OR HAVE A FLAT WASHER AT THE SCREW HEAD.

| | | | |
|---|-----|--|------|
| DRAWN BY: K.P.S. | | CHECKED BY: W.S.S. | |
| PLOT: 1-18 | | DATE: 02/11/04 | |
| DATE | BY | REVISION DESCRIPTION | IND. |
| 02/10/03 | WWS | UPDATE TO 2004 CODE COMPLIANT | A1 |
| 02/07/03 | WWS | REMOVED TO NEW TESTING | B1 |
| 02/18/03 | WWS | UPDATE TO PRESENT STANDARDS | C1 |
| DRAWING TITLE: PINNACLE ALUMINUM CLAD WOOD NON-IMPACT DOUBLE HUNG PICTURE WINDOW | | | |
| CONSULTANTS: W. W. SCHAEFER ENGINEERING & CONSULTING, P.A. 8885 N. MILITARY TRAIL SUITE C-204 PALM BEACH GARDENS, FL 33410 PHONE 561-751-4802 FAX 561-751-4803 | | MANUFACTURER: WINDSOR WINDOWS & DOORS 900 S. 19TH STREET WEST DES MOINES, IA 50265 800-218-6186 | |
| CERTIFICATION | | DRAWING NO. 1268 | |
| WARREN W. SCHAEFER, P.E. P.E. NO. 44135 | | REV. C | |
| SHEET NO. 1 OF 1 | | | |