

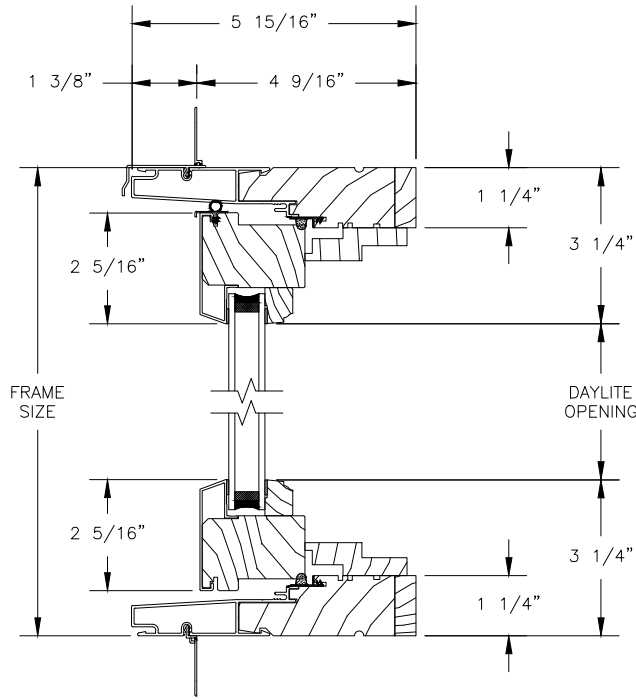
# Pinnacle Select Series

## CLAD PUSH-OUT CASEMENT

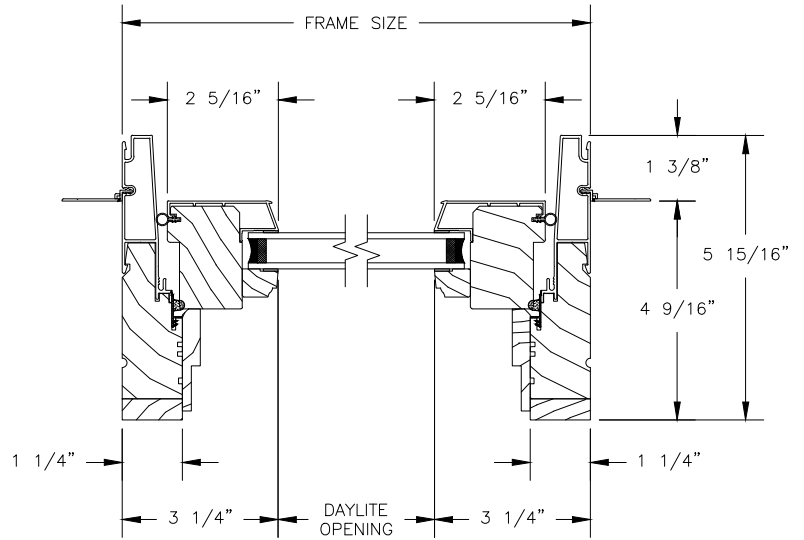
SECTION DETAILS : OPERATING

SCALE: 3" = 1'-0"

### PUSH-OUT

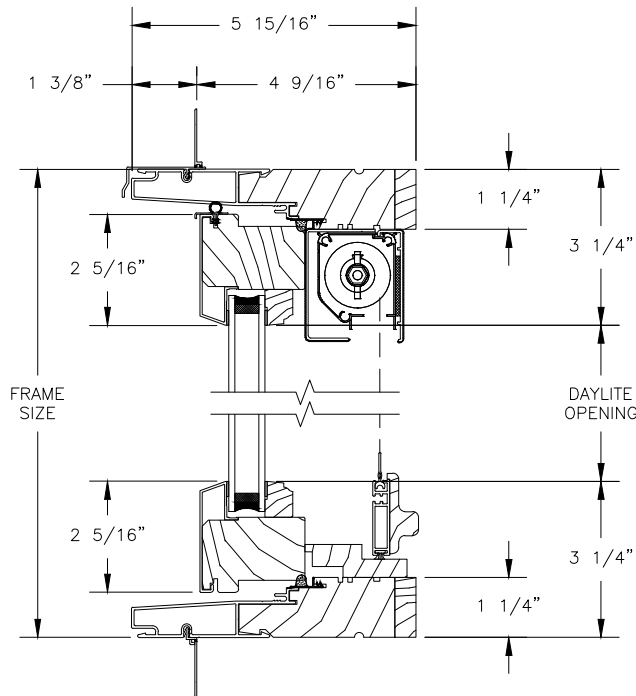


HEAD JAMB & SILL

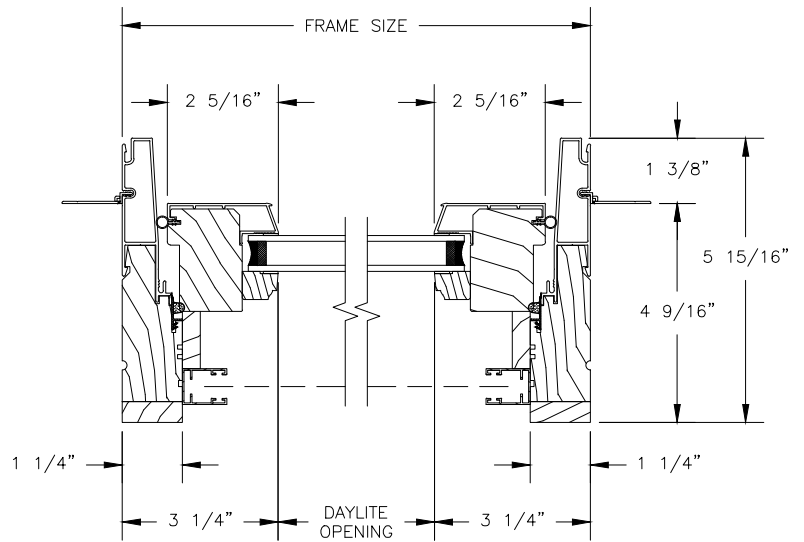


JAMBS

### PUSH-OUT WITH RETRACTABLE SCREEN



HEAD JAMB & SILL



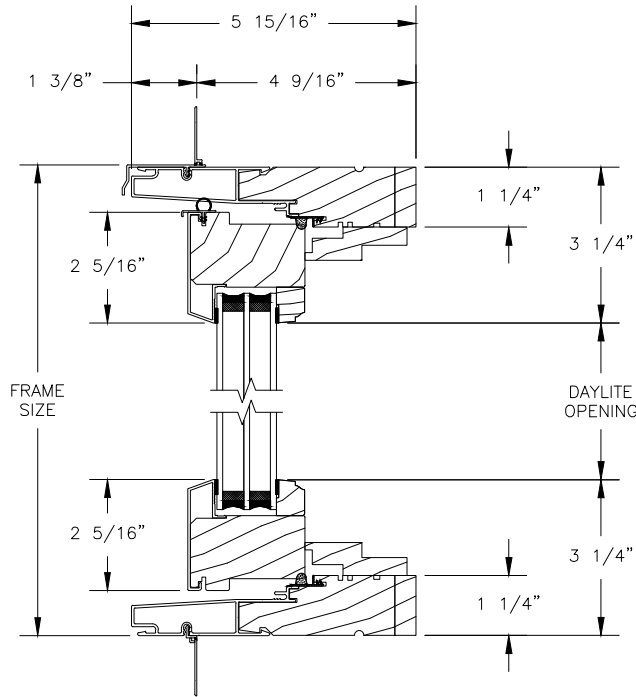
JAMBS

# Pinnacle Select Series

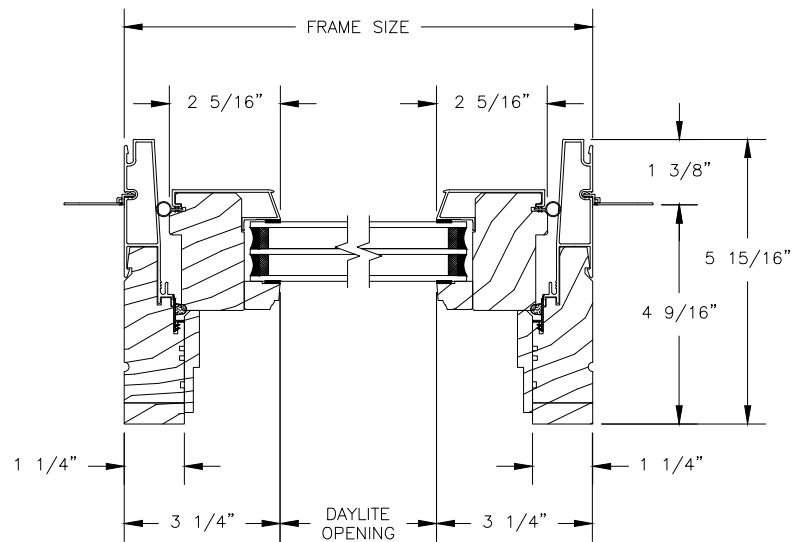
## CLAD PUSH-OUT CASEMENT

SECTION DETAILS : 1 1/4" TRIPLE IG OPERATING

### PUSH-OUT

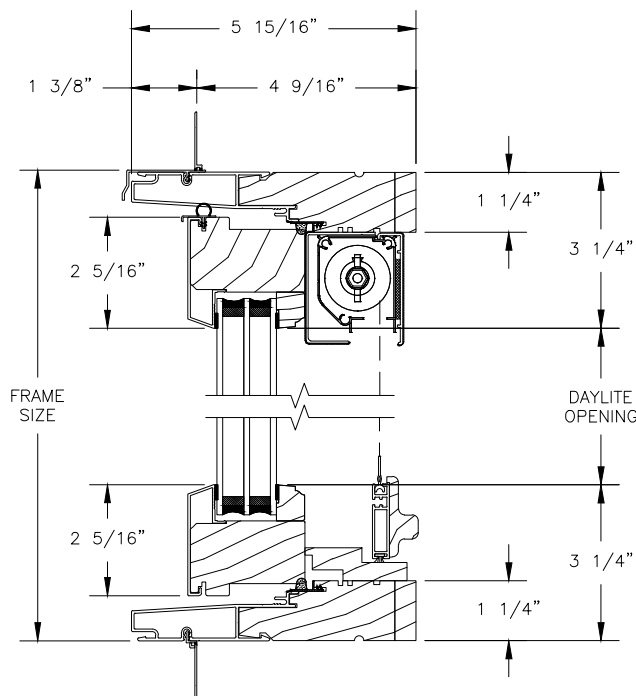


HEAD JAMB & SILL

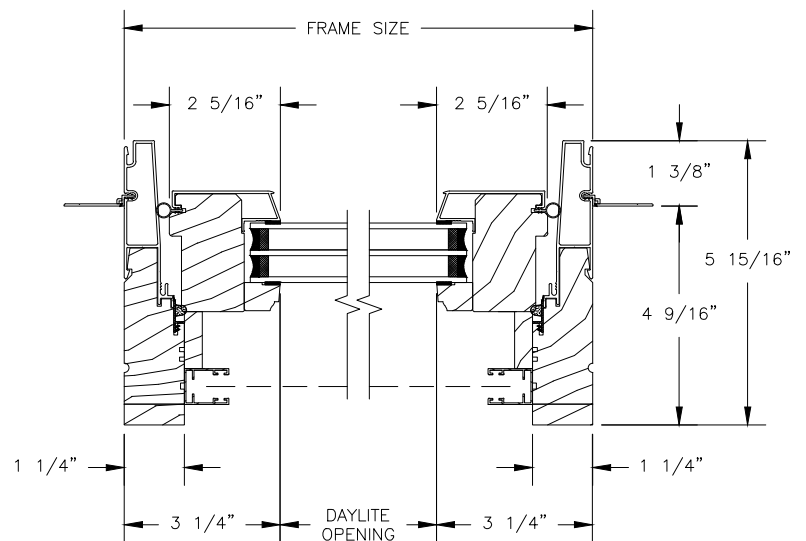


JAMBS

### PUSH-OUT WITH RETRACTABLE SCREEN



HEAD JAMB & SILL



JAMBS

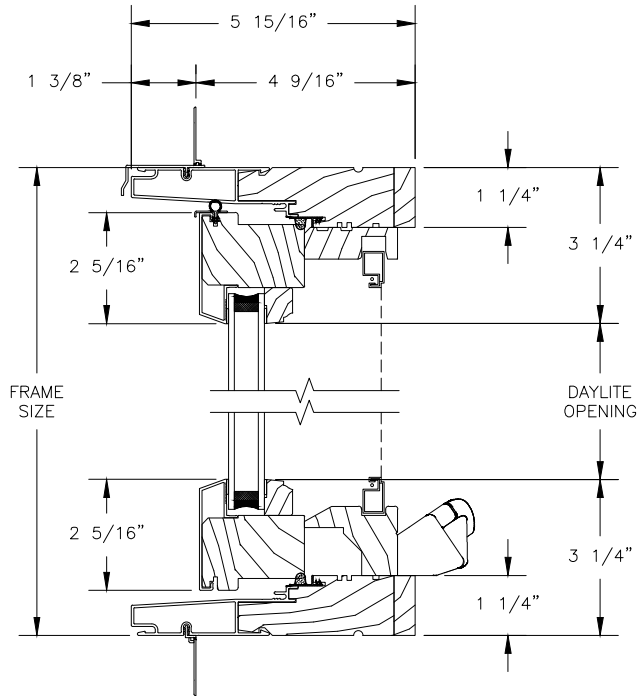
# Pinnacle Select Series

## CLAD CASEMENT

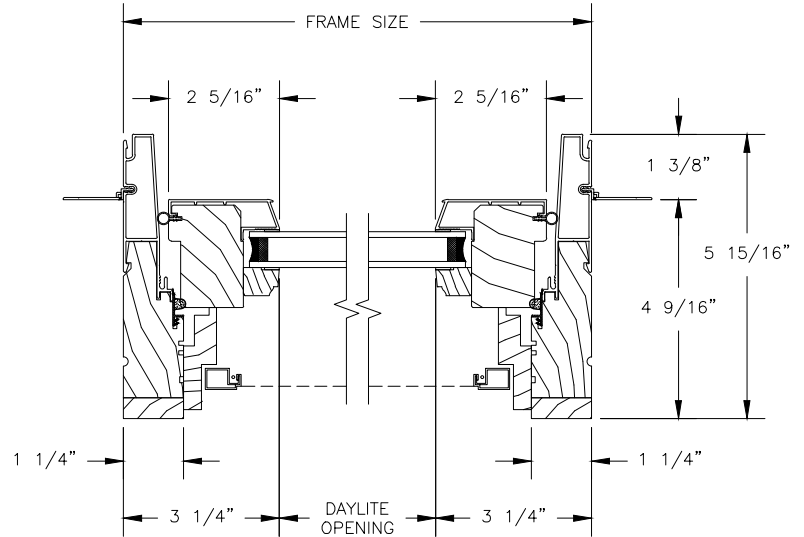
SECTION DETAILS : OPERATING

SCALE: 3" = 1'-0"

### OPERATING

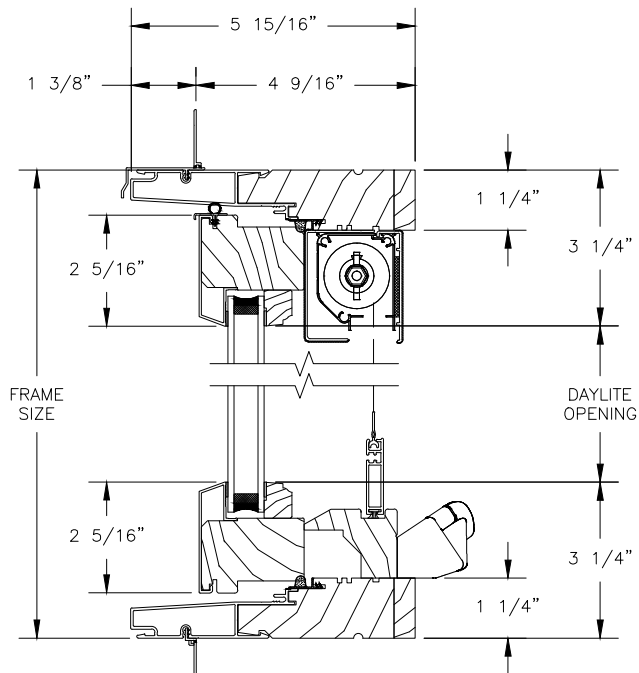


HEAD JAMB & SILL

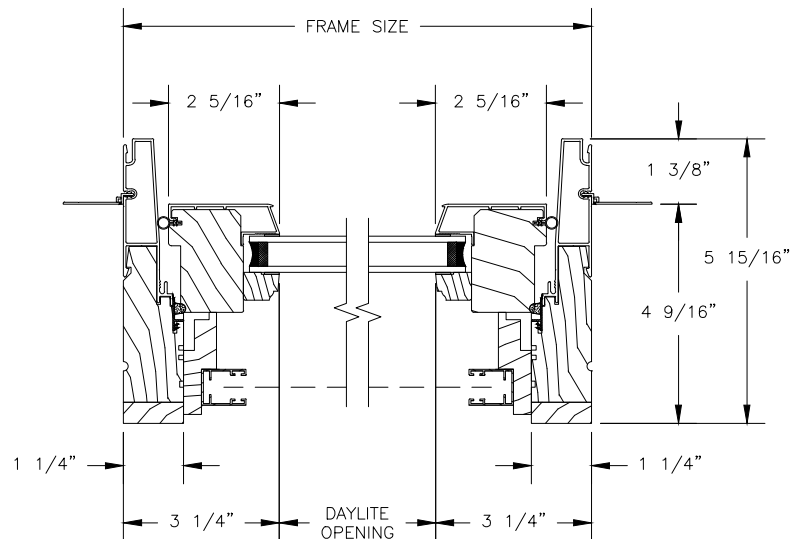


JAMBS

### OPERATING WITH RETRACTABLE SCREEN



HEAD JAMB & SILL



JAMBS

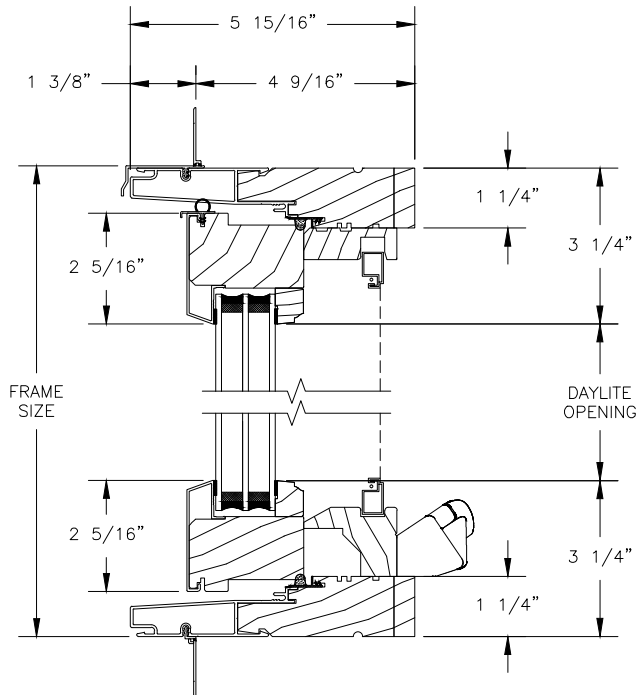
# Pinnacle Select Series

## CLAD CASEMENT

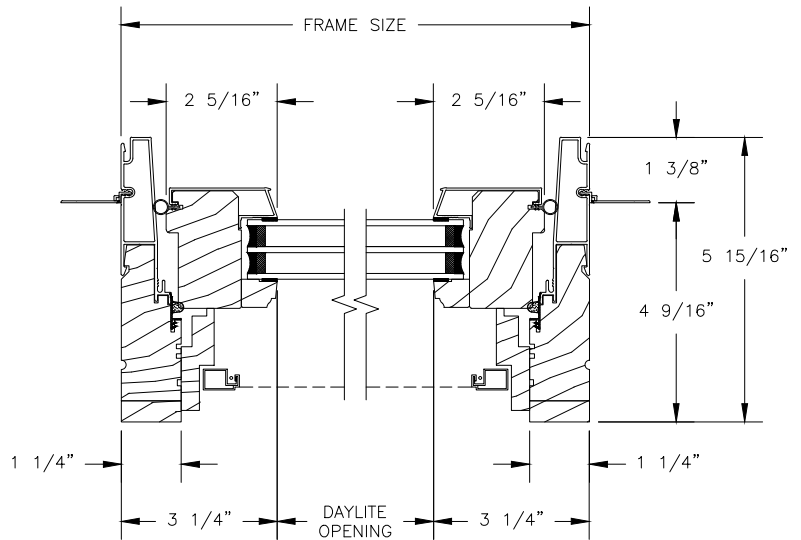
SECTION DETAILS : 1 1/4" TRIPLE IG OPERATING

SCALE: 3" = 1'-0"

### OPERATING

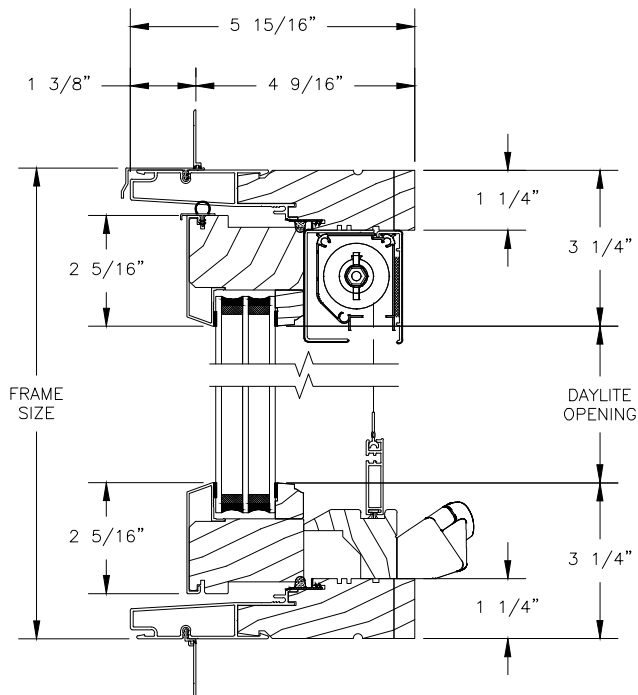


HEAD JAMB & SILL

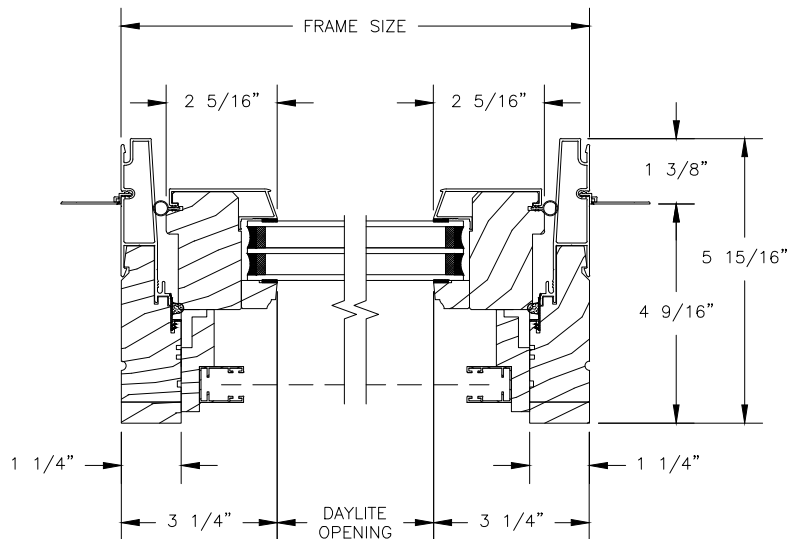


JAMBS

### OPERATING WITH RETRACTABLE SCREEN



HEAD JAMB & SILL



JAMBS

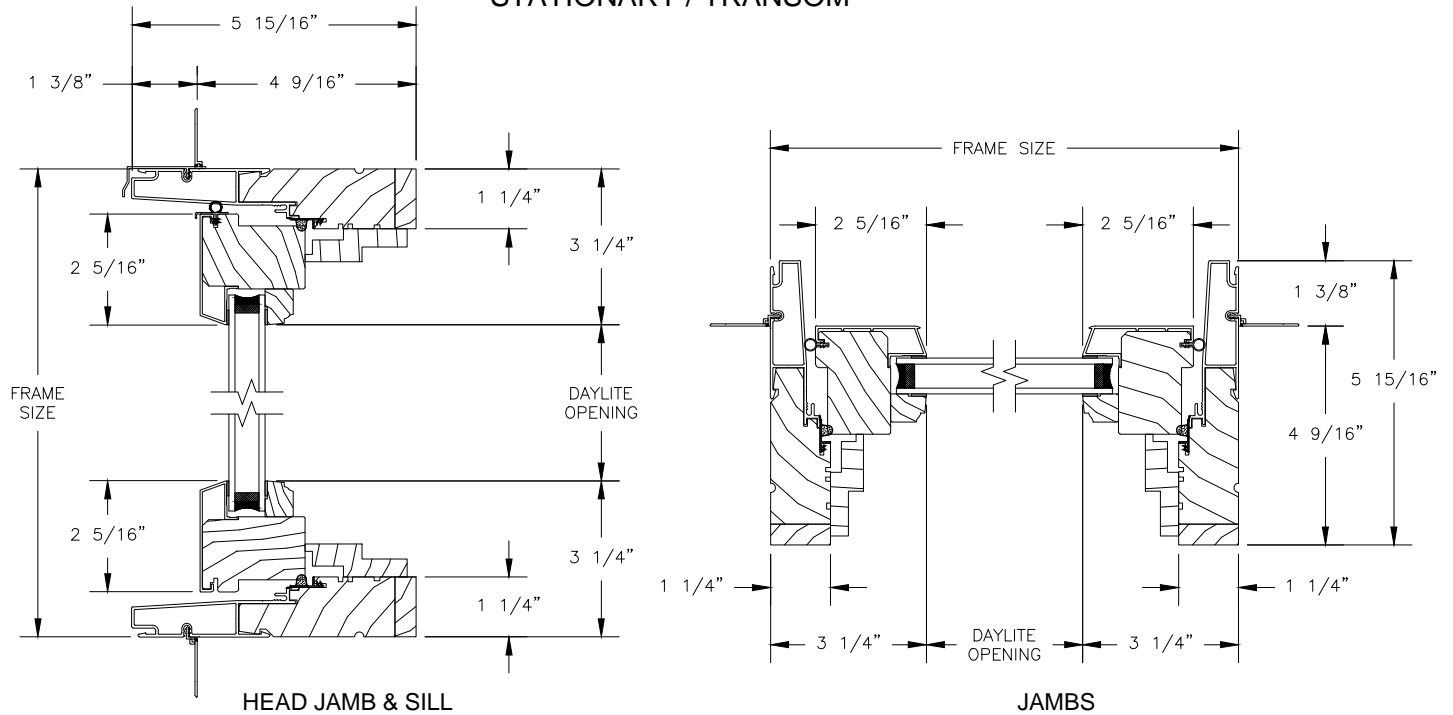
# Pinnacle Select Series

## CLAD PUSH-OUT CASEMENT

SECTION DETAILS : PICTURE

SCALE: 3" = 1'-0"

### STATIONARY / TRANSOM



SCALE: 3" = 1'-0"

Technical drawing of a window frame cross-section. The drawing shows a vertical section of a window frame with various components and dimensions. The dimensions are as follows:

- Top horizontal dimension:  $5 \frac{15}{16}"$
- Top left horizontal dimension:  $1 \frac{3}{8}"$
- Top right horizontal dimension:  $4 \frac{9}{16}"$
- Left vertical dimension (FRAME SIZE):  $2 \frac{5}{16}"$
- Right vertical dimension (DAYLITE OPENING):  $1 \frac{1}{4}"$
- Right vertical dimension (DAYLITE OPENING):  $3 \frac{1}{4}"$
- Bottom left vertical dimension:  $2 \frac{5}{16}"$
- Bottom right vertical dimension:  $1 \frac{1}{4}"$
- Bottom right vertical dimension:  $3 \frac{1}{4}"$

The drawing includes a central vertical section showing the frame and a horizontal section showing the frame and a vertical section showing the frame and a horizontal section showing the frame. The frame is shown in cross-section with various components and dimensions. The frame is shown in cross-section with various components and dimensions. The frame is shown in cross-section with various components and dimensions.

Technical drawing of a double door assembly showing cross-sections and dimensions. The drawing includes the following labels and measurements:

- FRAME SIZE**: Indicated at the top, spanning the width of the door frames.
- 2 5/16"**: Two horizontal dimensions indicating the width of the door frames on either side of the central opening.
- 1 3/8"**: A vertical dimension indicating the height of the upper door frame section.
- 5 15/16"**: A vertical dimension indicating the height of the lower door frame section.
- 4 9/16"**: A vertical dimension indicating the height of the lower door frame section, measured from the bottom of the frame to the top of the door panel.
- 1 1/4"**: Two horizontal dimensions indicating the width of the door panels on either side of the central opening.
- 3 1/4"**: Two horizontal dimensions indicating the width of the door panels on either side of the central opening.
- DAYLITE OPENING**: Labeled at the bottom center, indicating the central opening between the two doors.

1/29/15

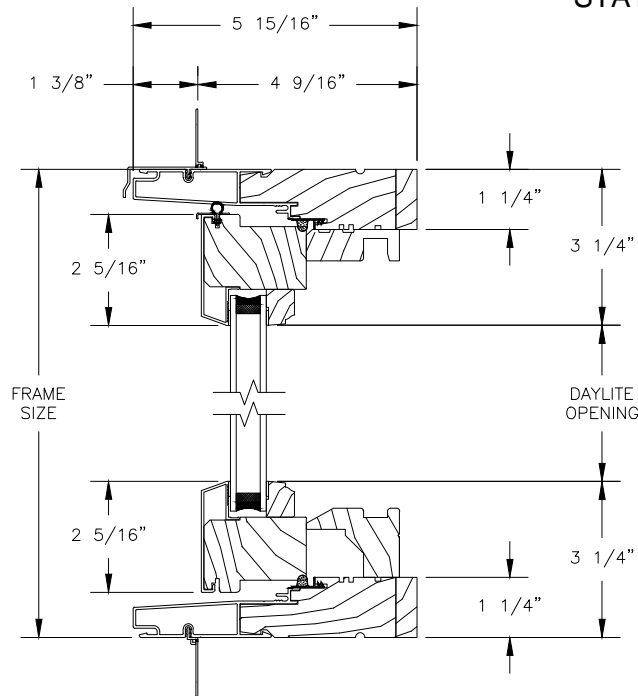
# Pinnacle Select Series

## CLAD CASEMENT

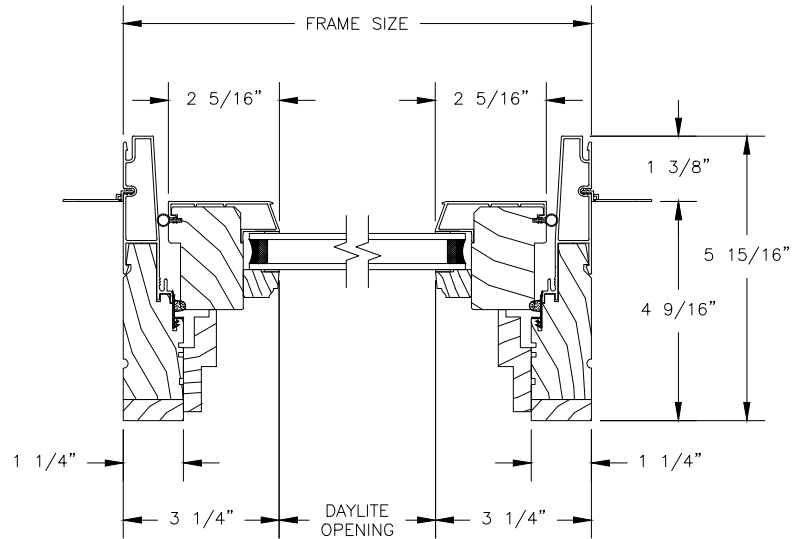
SECTION DETAILS : STATIONARY & PICTURE/TRANSOM

SCALE: 3" = 1'-0"

### STATIONARY

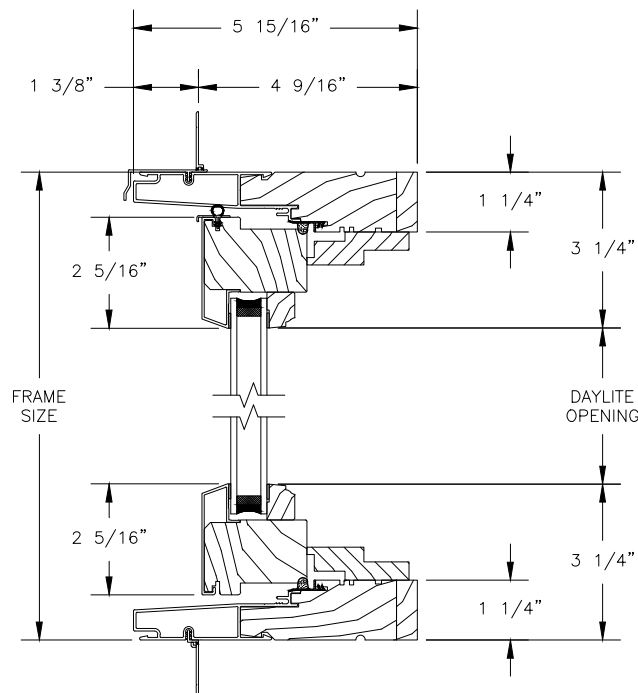


HEAD JAMB & SILL

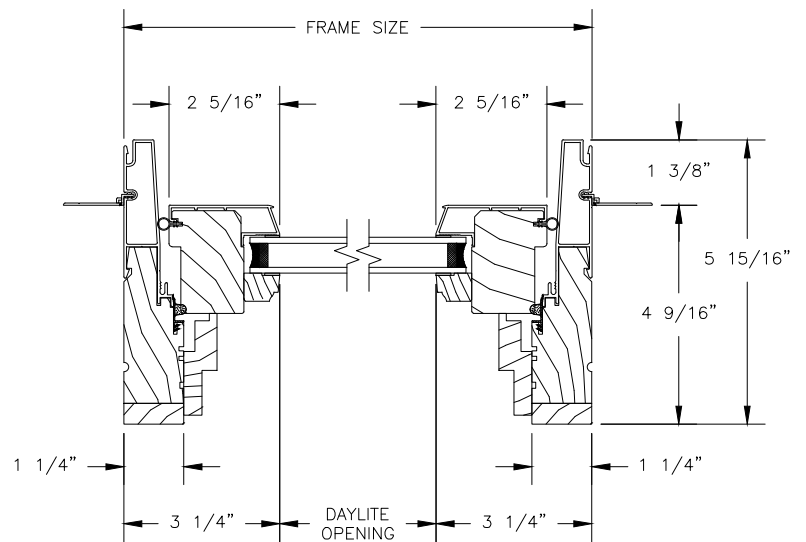


JAMBS

### TRANSOM



HEAD JAMB & SILL



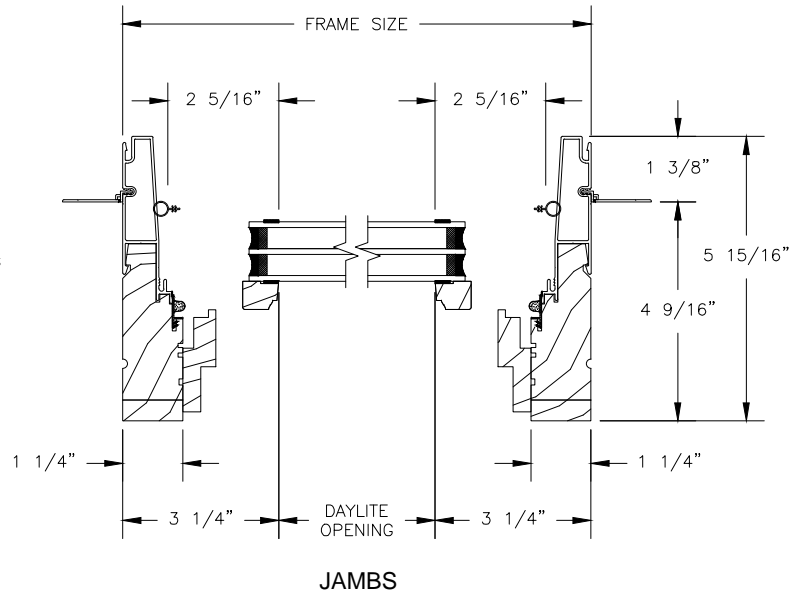
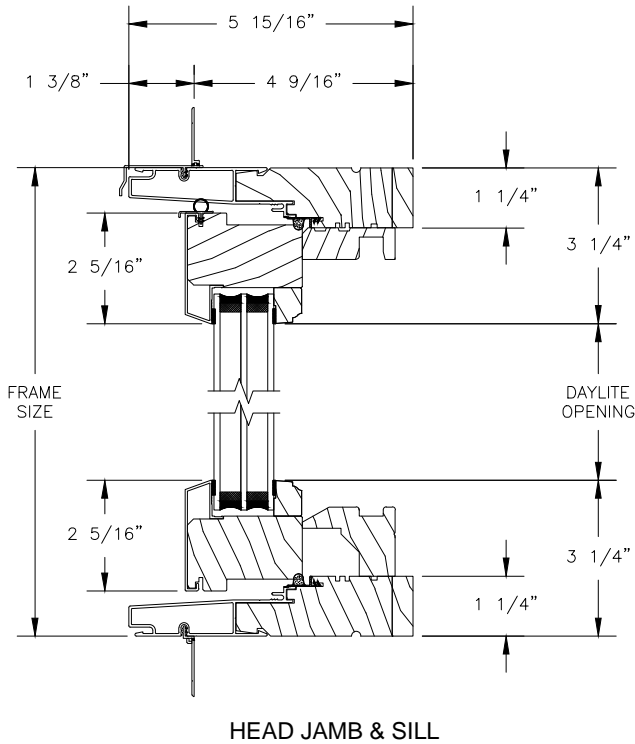
JAMBS

# Pinnacle Select Series

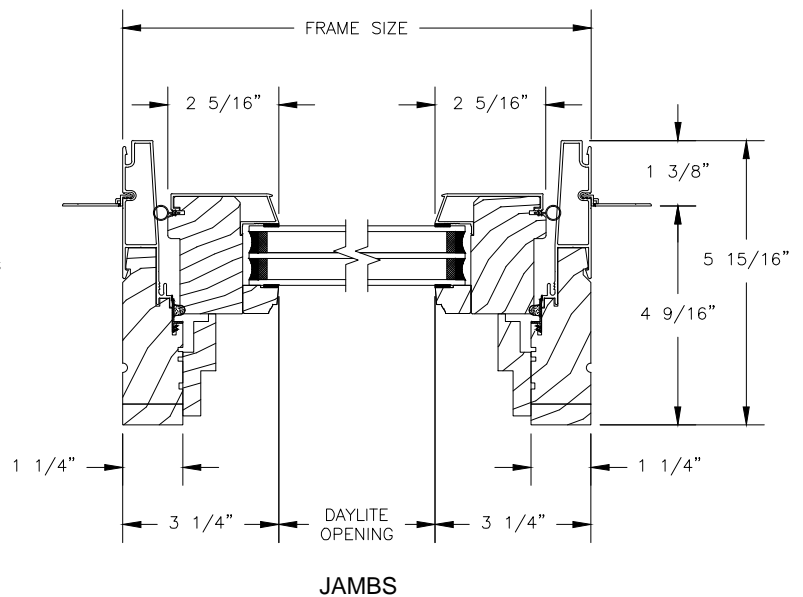
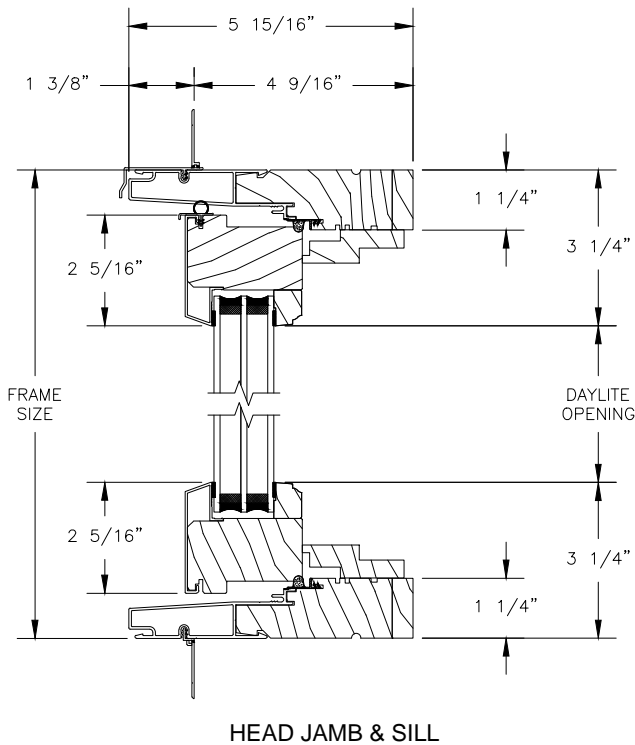
## CLAD CASEMENT

SECTION DETAILS : 1 1/4" TRIPLE IG STATIONARY & PICTURE/TRANSOM  
SCALE: 3" = 1'-0"

### STATIONARY



### TRANSOM



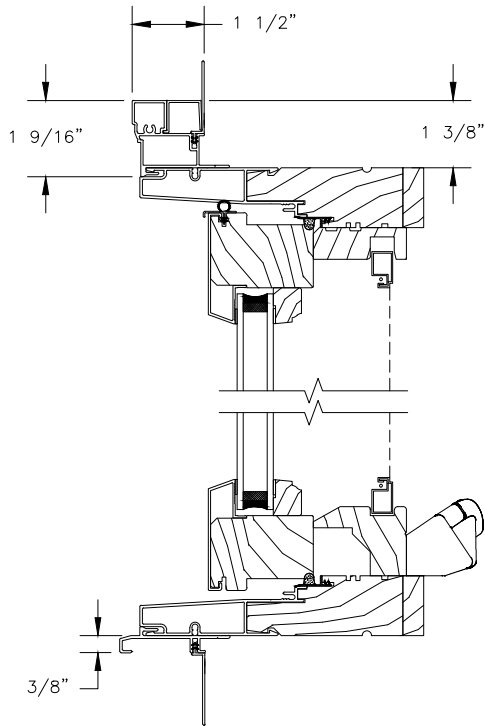


# Pinnacle Select Series

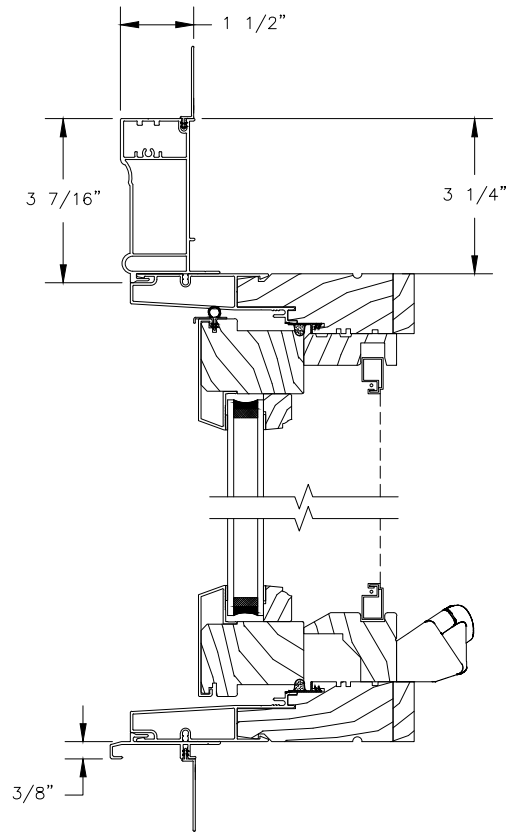
## CLAD CASEMENT

SECTION DETAILS : CASING OPTIONS

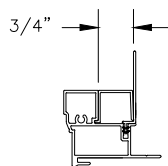
SCALE: 3" = 1'-0"



HEAD JAMB & SILL WITH  
CLAD BRICKMOULD CASING



HEAD JAMB & SILL WITH  
CLAD WILLIAMSBURG CASING



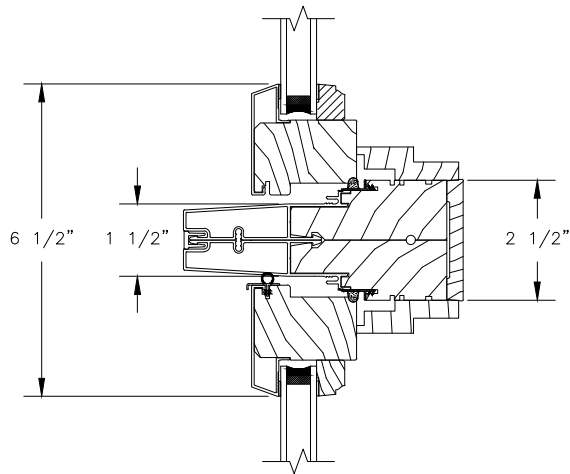
CLAD BRICKMOULD CASING  
WITH OPTIONAL J-CHANNEL COVER

# Pinnacle Select Series

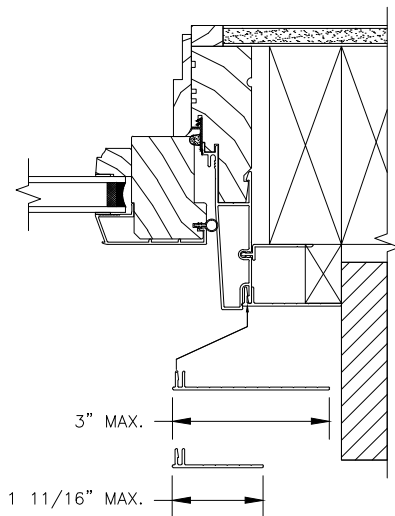
## CLAD PUSH-OUT CASEMENT

SECTION DETAILS : MULLIONS

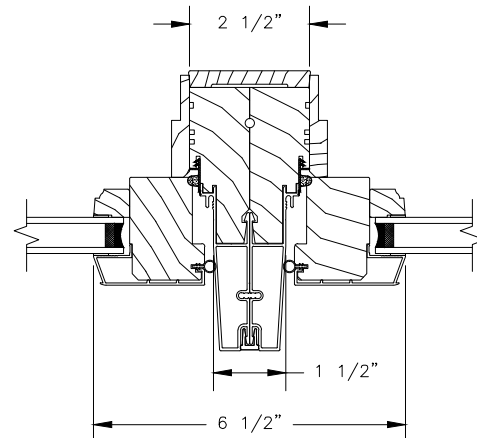
SCALE: 3" = 1'-0"



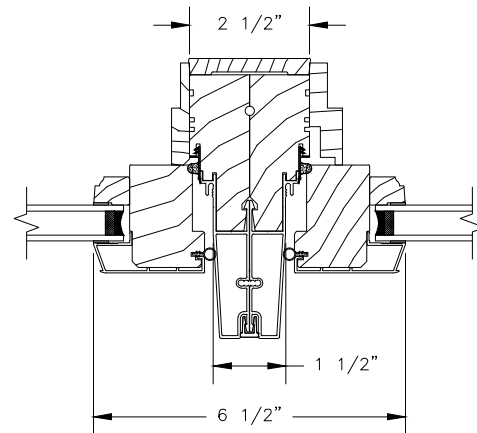
HORIZONTAL MULLION  
TRANSOM/OPERATOR



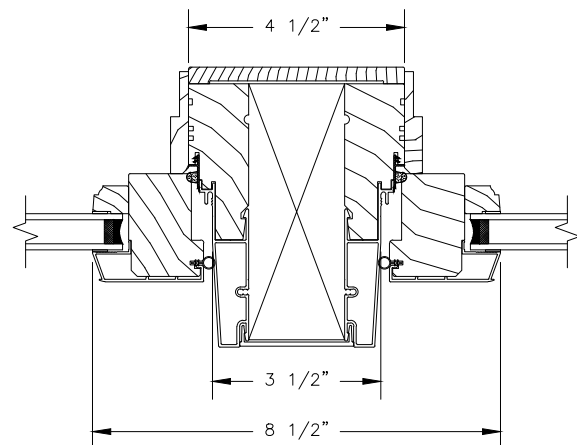
FRAME EXPANDER  
OPTIONS



VERTICAL MULLION  
OPERATOR/OPERATOR



VERTICAL MULLION  
OPERATOR/STATIONARY



VERTICAL MULLION WITH  
2" SPREAD MULL  
ADDITIONAL WIDTHS INCLUDE: 2 1/2", 4" & 6"

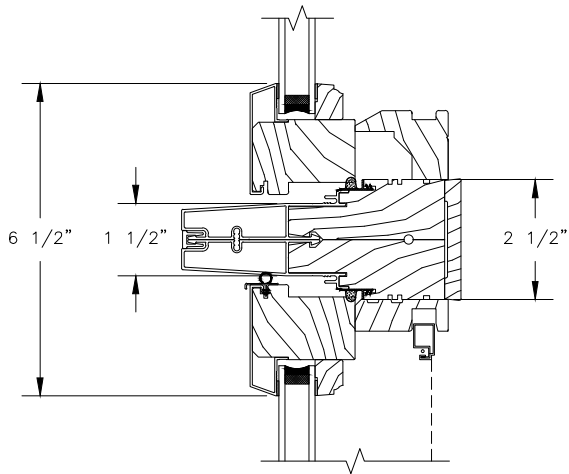
NOTE:  
FOR INFORMATION ON STRUCTURAL MULLIONS REFER TO  
THE PRODUCT PERFORMANCE AND INFORMATION SECTION.

# Pinnacle Select Series

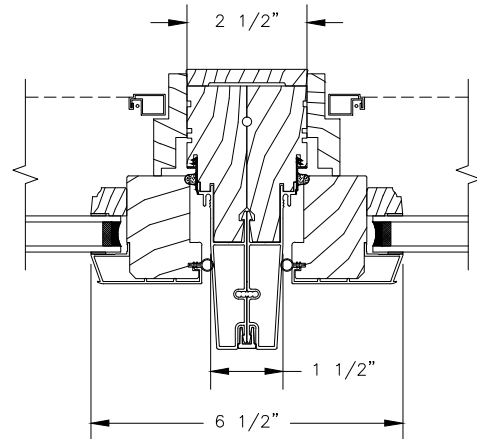
## CLAD CASEMENT

SECTION DETAILS : MULLIONS

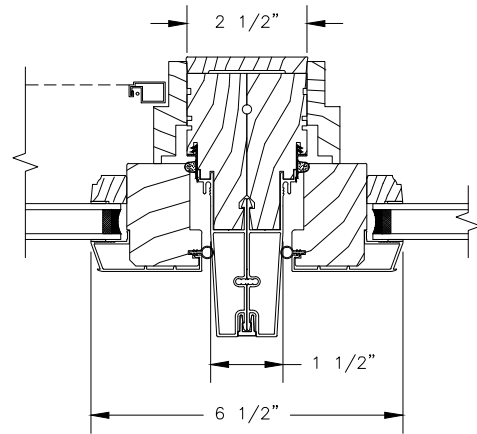
SCALE: 3" = 1'-0"



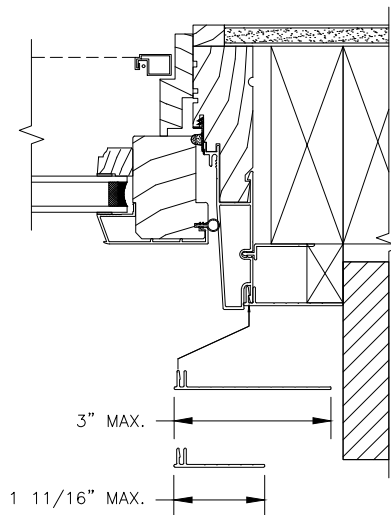
HORIZONTAL MULLION  
STATIONARY/OPERATOR



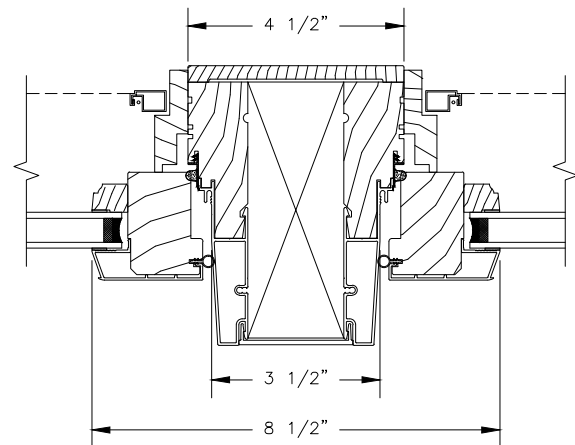
VERTICAL MULLION  
OPERATOR/OPERATOR



VERTICAL MULLION  
OPERATOR/STATIONARY



FRAME EXPANDER  
OPTIONS



VERTICAL MULLION WITH  
2" SPREAD MULL  
ADDITIONAL WIDTHS INCLUDE: 2 1/2", 4" & 6"

NOTE:  
FOR INFORMATION ON STRUCTURAL MULLIONS REFER TO  
THE PRODUCT PERFORMANCE AND INFORMATION SECTION.

# Pinnacle Select Series

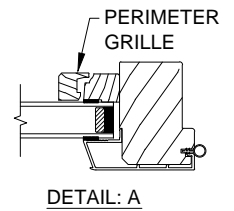
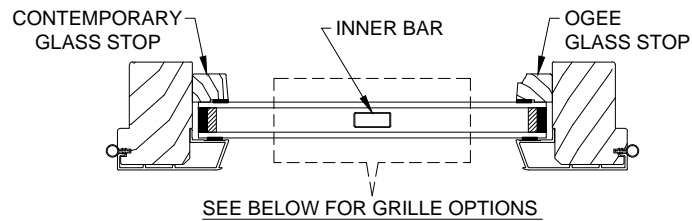
## CLAD PUSH-OUT CASEMENT

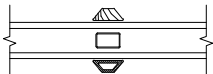
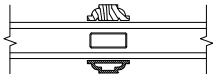
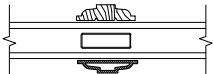
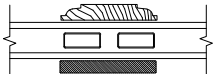
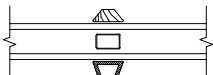
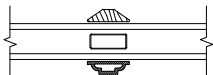
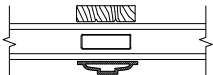
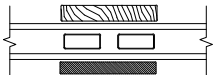
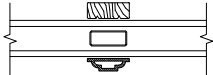
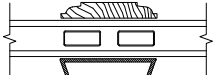
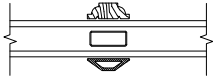
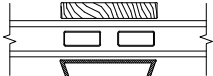
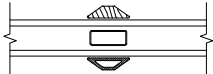
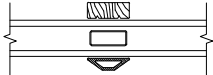

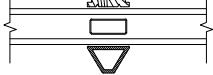
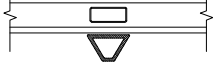

SECTION DETAILS : GLASS STOP & DIVIDED LITE OPTIONS

SCALE: 3" = 1'-0"

### AVAILABLE STYLES

-  - PUTTY
-  - TALL PUTTY
-  - OGEE
-  - CONTEMPORARY



	5/8" WDL WITH INNER BAR	7/8" WDL WITH INNERBAR	1 1/4" WDL WITH INNERBAR	2" WDL WITH INNERBAR
STANDARD INSULATING GLASS				
13/16" INNERGRILLE				
3/4" PROFILED INNERGRILLE				
1" PROFILED INNERGRILLE				
7/8" STICK & PERIMETER GRILLE				
1 1/4" STICK & PERIMETER GRILLE				
				
				
				

### NOTE:

\* ALL WDL OPTIONS CAN BE ORDERED WITH OR WITHOUT INNER BAR

\* PERIMETER GRILLES ONLY AVAILABLE IN THE 7/8" AND 1 1/4" OGEE STYLE GLASS STOP (SEE DETAIL: A)

# Pinnacle Select Series

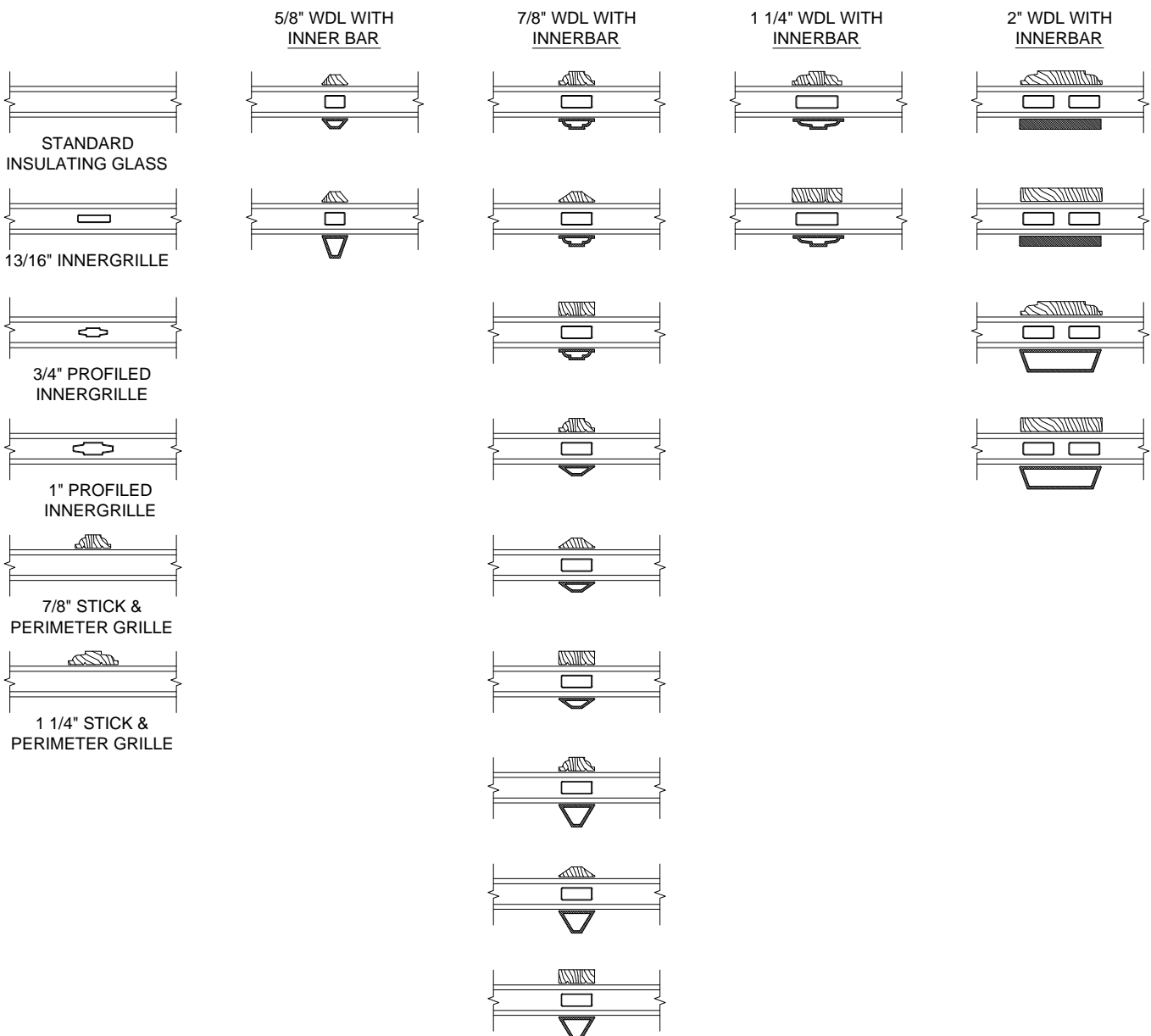
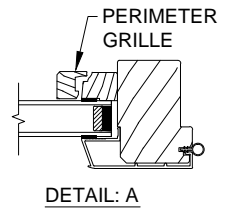
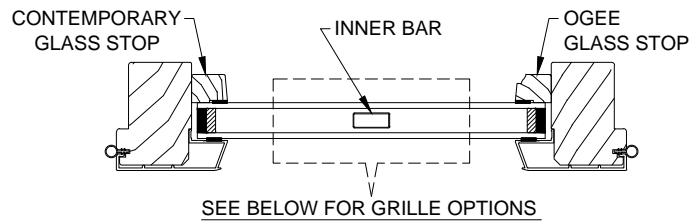
## CLAD CASEMENT

SECTION DETAILS : GLASS STOP & DIVIDED LITE OPTIONS

SCALE: 3" = 1'-0"

### AVAILABLE STYLES

-  - PUTTY
-  - TALL PUTTY
-  - OGEE
-  - CONTEMPORARY



### NOTE:

\* ALL WDL OPTIONS CAN BE ORDERED WITH OR WITHOUT INNER BAR

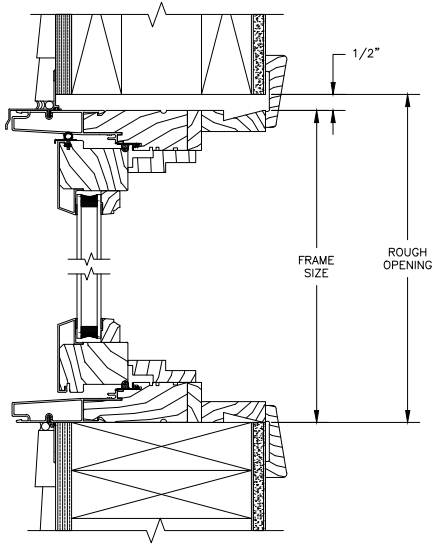
\* PERIMETER GRILLES ONLY AVAILABLE IN THE 7/8" AND 1 1/4" OGEE STYLE GLASS STOP (SEE DETAIL: A)

# Pinnacle Select Series

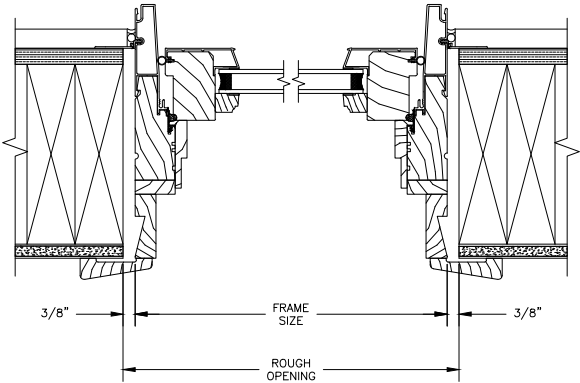
## CLAD PUSH-OUT CASEMENT

SECTION DETAILS : CONSTRUCTION

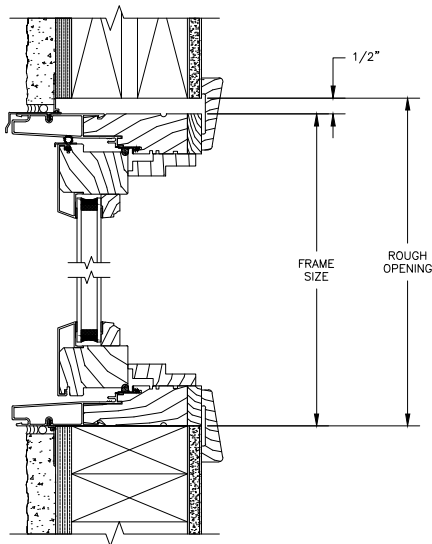
SCALE: 2" = 1'-0"



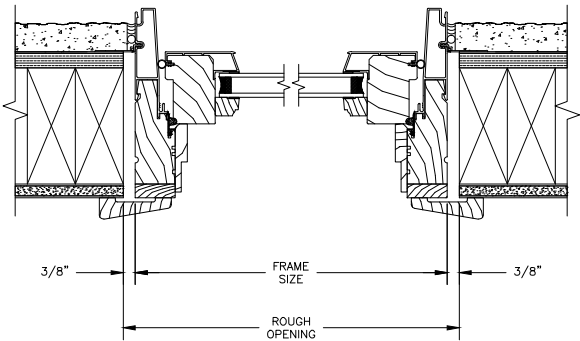
HEAD JAMB & SILL  
2 X 6 FRAME WITH SIDING



JAMBS  
2 X 6 FRAME WITH SIDING



HEAD JAMB & SILL  
2 X 4 FRAME WITH STUCCO



JAMBS  
2 X 4 FRAME WITH STUCCO

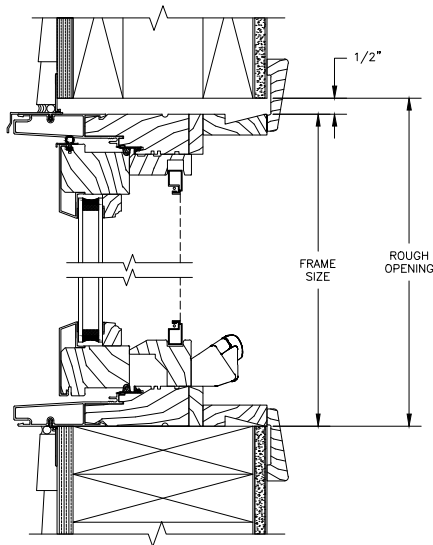
NOTE :  
THE ABOVE WALL SECTIONS REPRESENT TYPICAL WALL CONDITIONS, THESE DETAILS ARE NOT INTENDED AS INSTALLATIONS INSTRUCTIONS. PLEASE REFER TO THE INSTALLATION INSTRUCTIONS PROVIDED WITH THE PURCHASED UNITS.

# Pinnacle Select Series

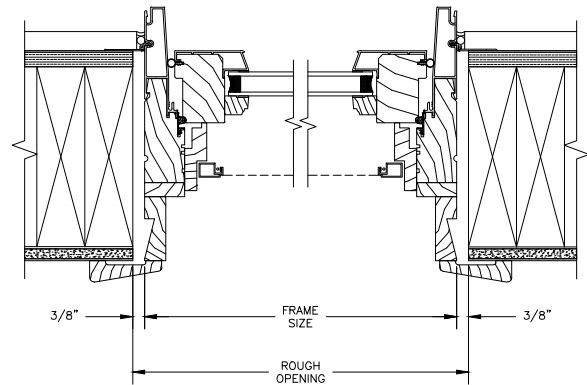
## CLAD CASEMENT

SECTION DETAILS : CONSTRUCTION

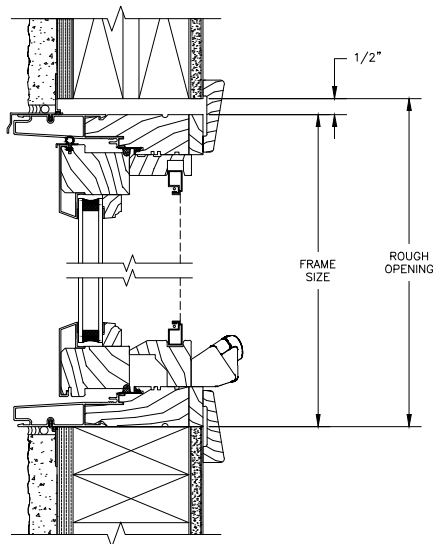
SCALE: 2" = 1'-0"



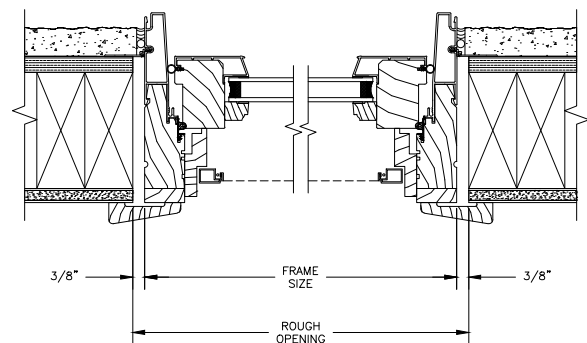
HEAD JAMB & SILL  
2 X 6 FRAME WITH SIDING



JAMBS  
2 X 6 FRAME WITH SIDING



HEAD JAMB & SILL  
2 X 4 FRAME WITH STUCCO



JAMBS  
2 X 4 FRAME WITH STUCCO

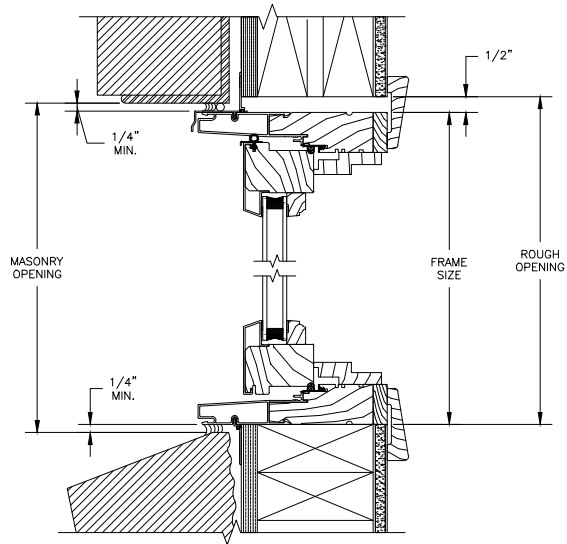
NOTE:  
THE ABOVE WALL SECTIONS REPRESENT TYPICAL WALL CONDITIONS, THESE DETAILS ARE NOT INTENDED AS INSTALLATIONS INSTRUCTIONS. PLEASE REFER TO THE INSTALLATION INSTRUCTIONS PROVIDED WITH THE PURCHASED UNITS.

# Pinnacle Select Series

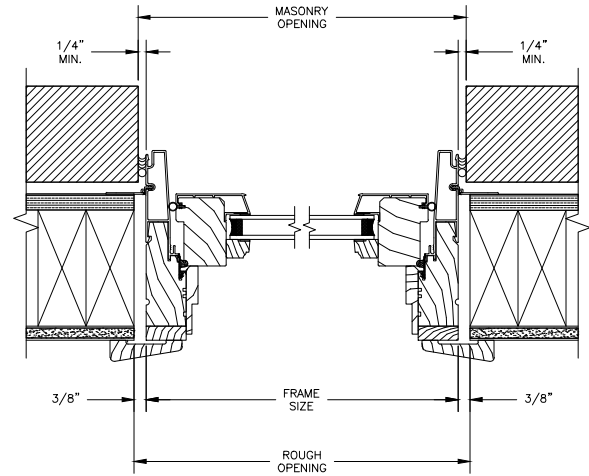
## CLAD PUSH-OUT CASEMENT

SECTION DETAILS : CONSTRUCTION

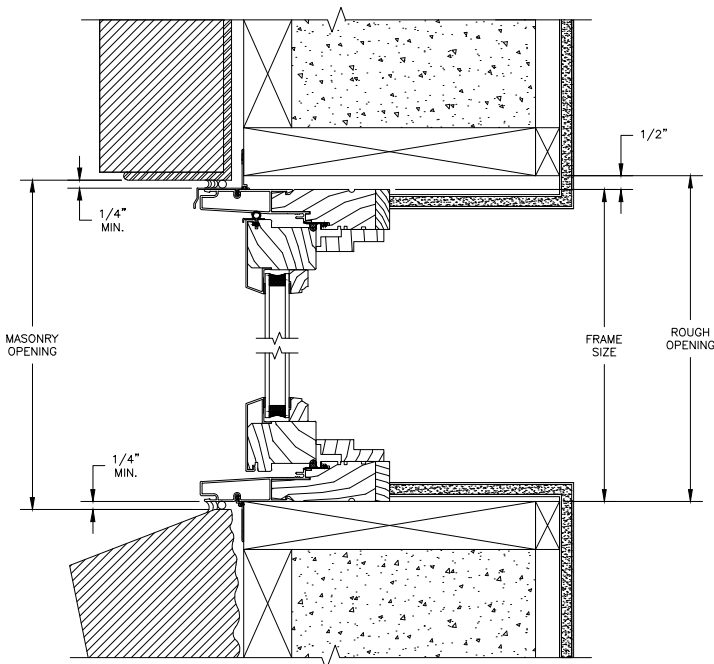
SCALE: 2" = 1'-0"



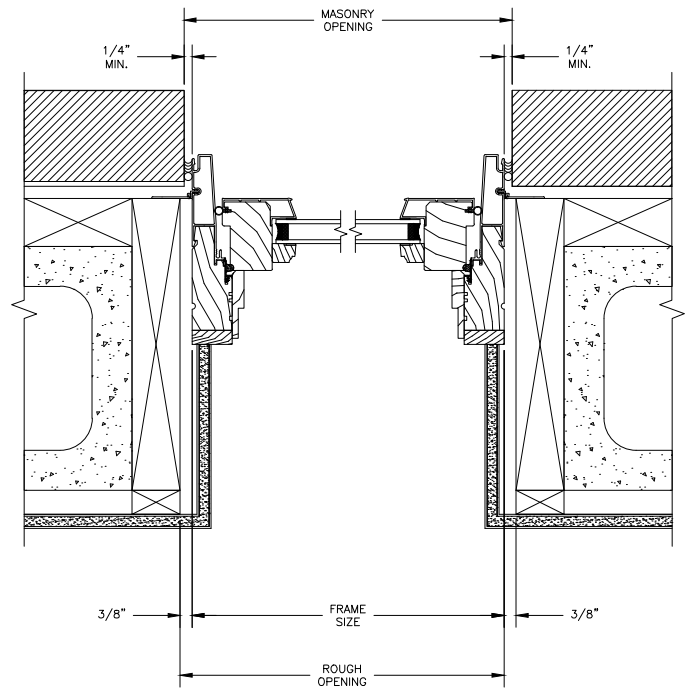
HEAD JAMB & SILL  
2 X 4 FRAME WITH BRICK VENEER



JAMBS  
2 X 4 FRAME WITH BRICK VENEER



HEAD JAMB & SILL  
8" CONCRETE BLOCK WALL  
WITH BRICK VENEER



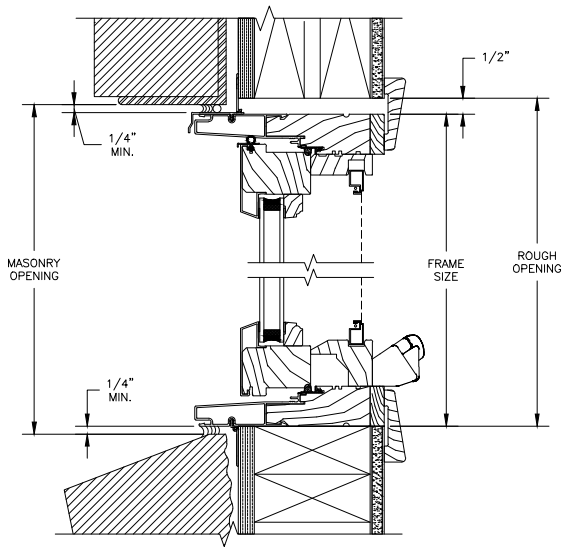
JAMBS  
8" CONCRETE BLOCK WALL  
WITH BRICK VENEER



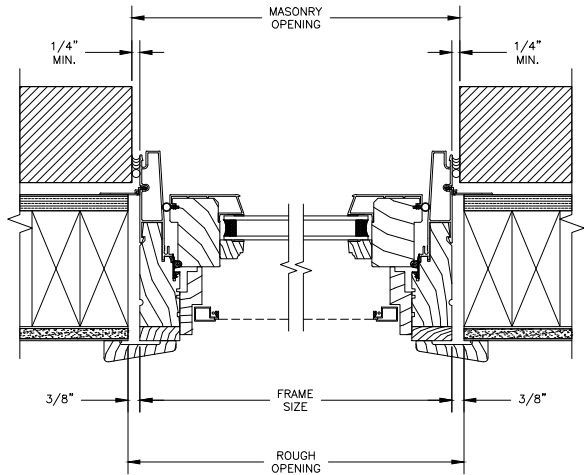
# Pinnacle Select Series

## CLAD CASEMENT

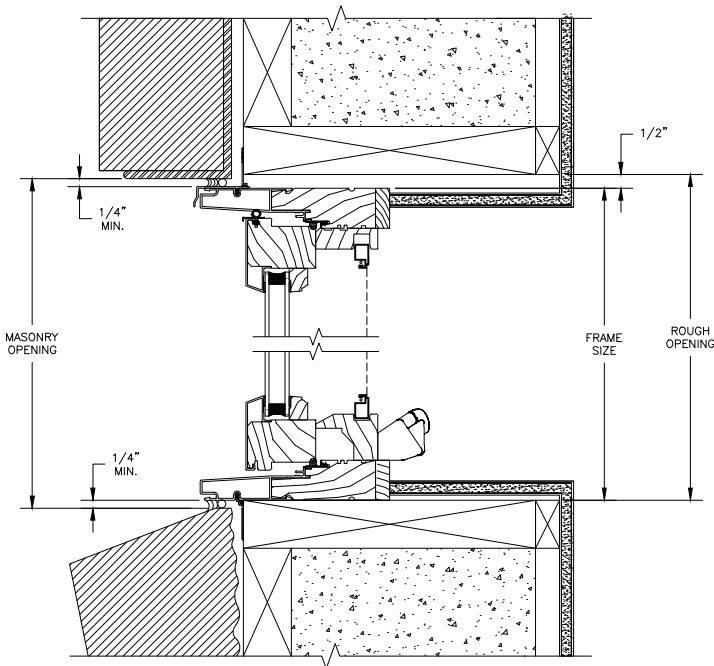
SECTION DETAILS : CONSTRUCTION  
SCALE: 2" = 1'-0"



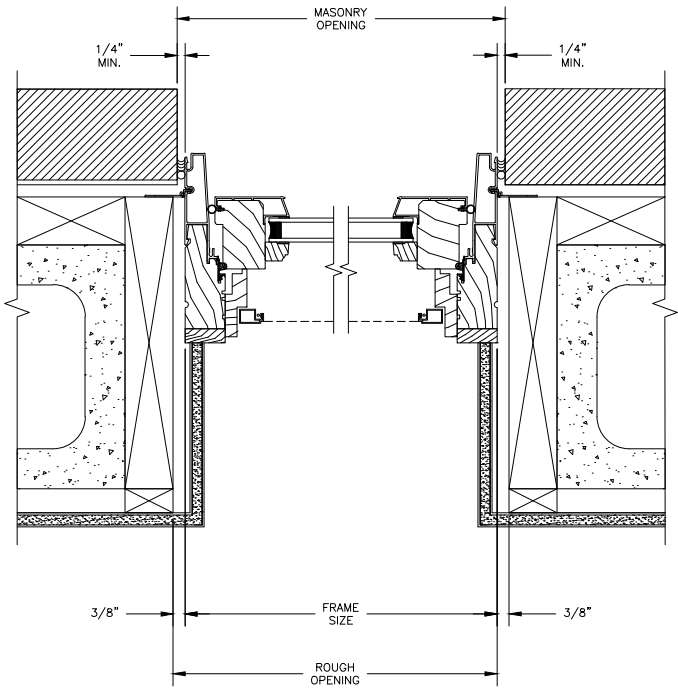
HEAD JAMB & SILL  
2 X 4 FRAME WITH BRICK VENEER



JAMBS  
2 X 4 FRAME WITH BRICK VENEER



HEAD JAMB & SILL  
8" CONCRETE BLOCK WALL  
WITH BRICK VENEER



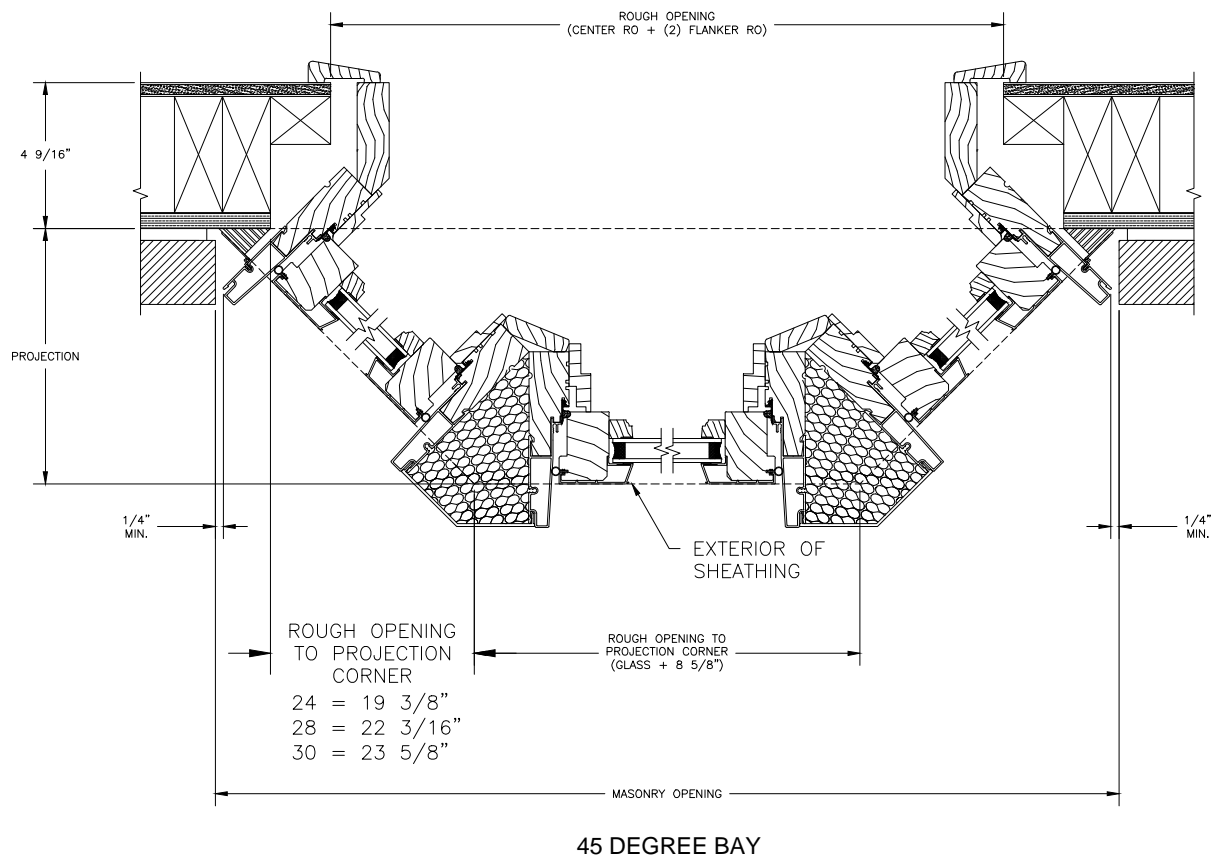
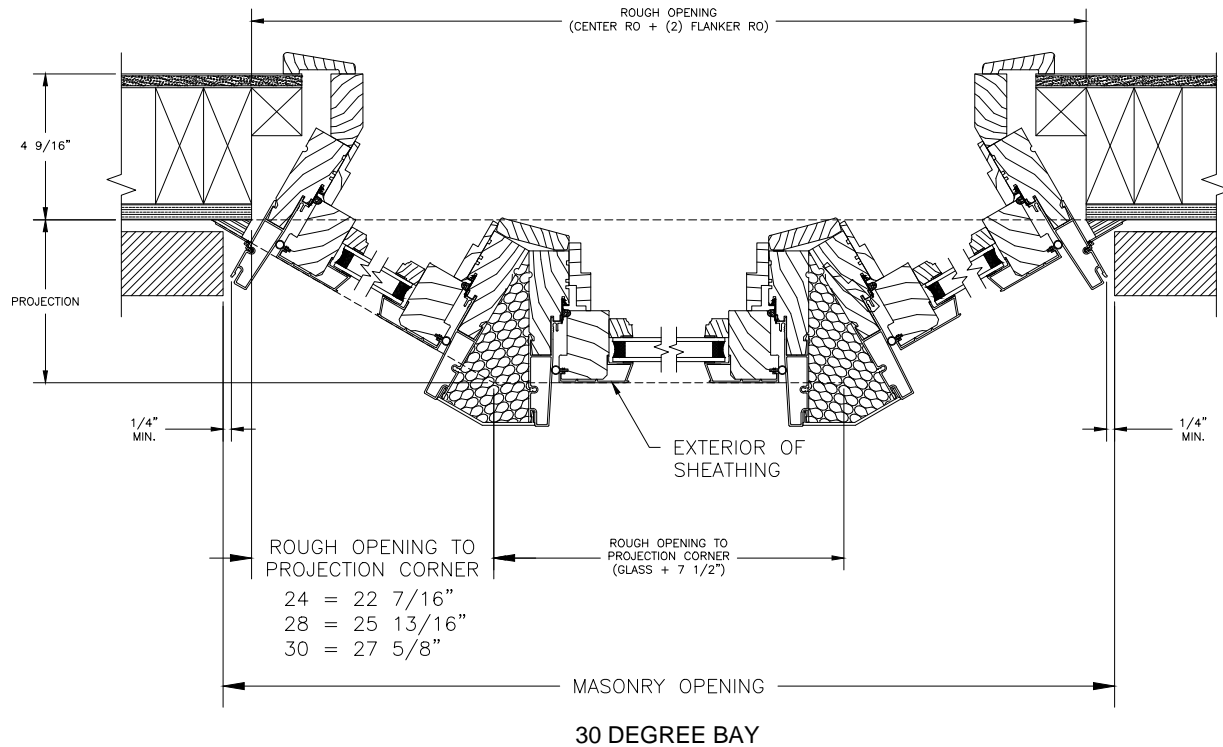
JAMBS  
8" CONCRETE BLOCK WALL  
WITH BRICK VENEER

# Pinnacle Select Series

## CLAD PUSH-OUT CASEMENT

SECTION DETAILS : 30/45 DEGREES BAY

SCALE: 2" = 1'-0"



# Pinnacle Select Series

## CLAD CASEMENT

SECTION DETAILS : 30/45 DEGREES BAY

SCALE: 2" = 1'-0"

