

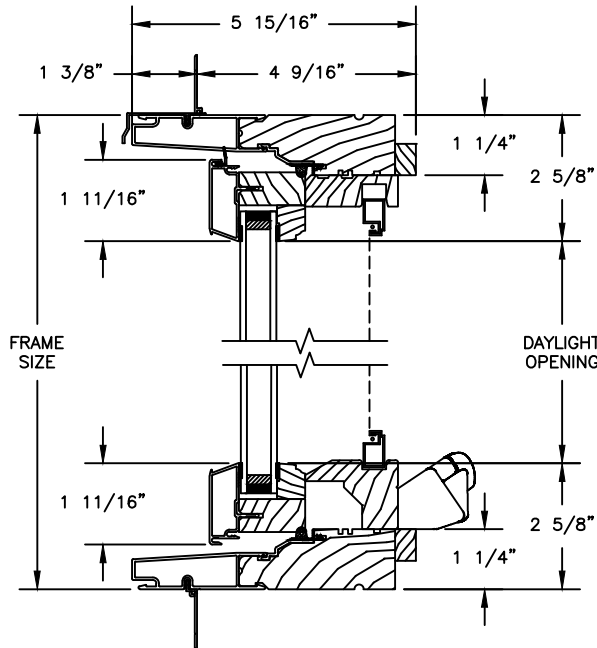
Pinnacle Series

CLAD CASEMENT

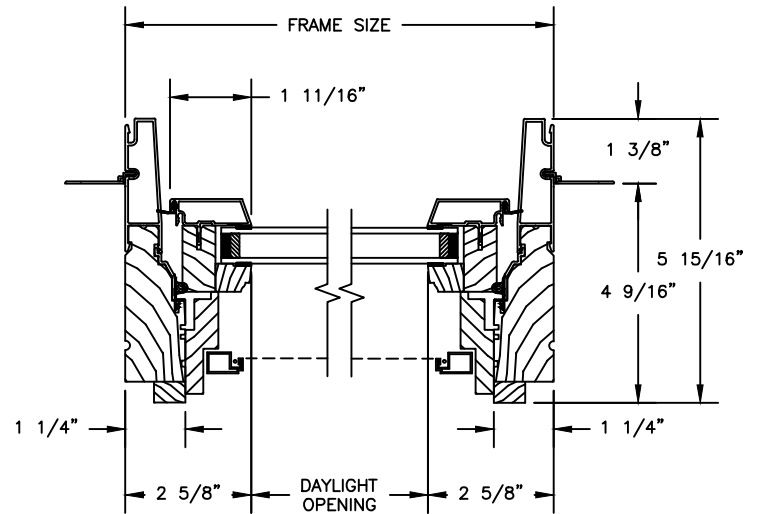
SECTION DETAILS : OPERATING / STATIONARY

SCALE: 3" = 1'-0"

OPERATING

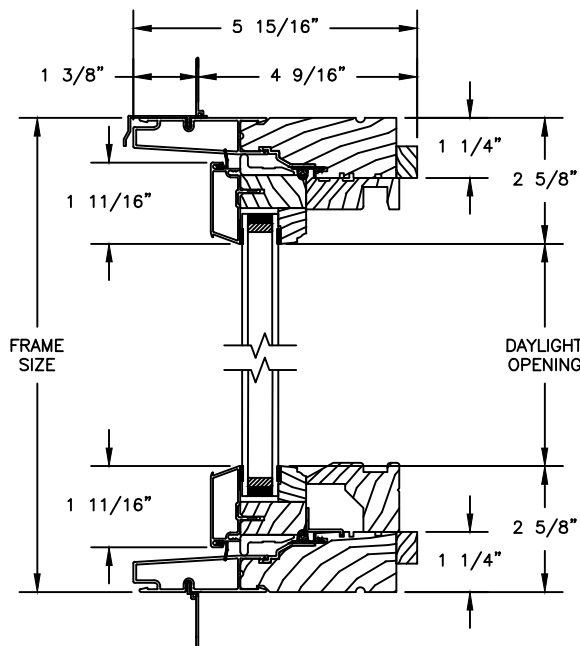


HEAD JAMB & SILL

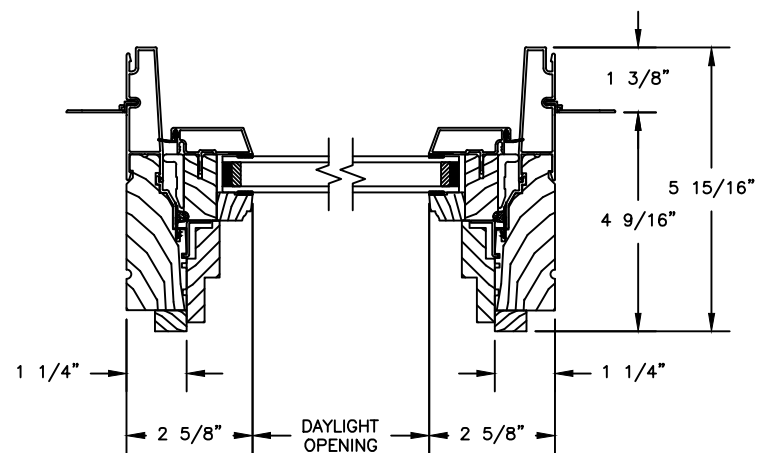


JAMBS

STATIONARY



HEAD JAMB & SILL



JAMBS

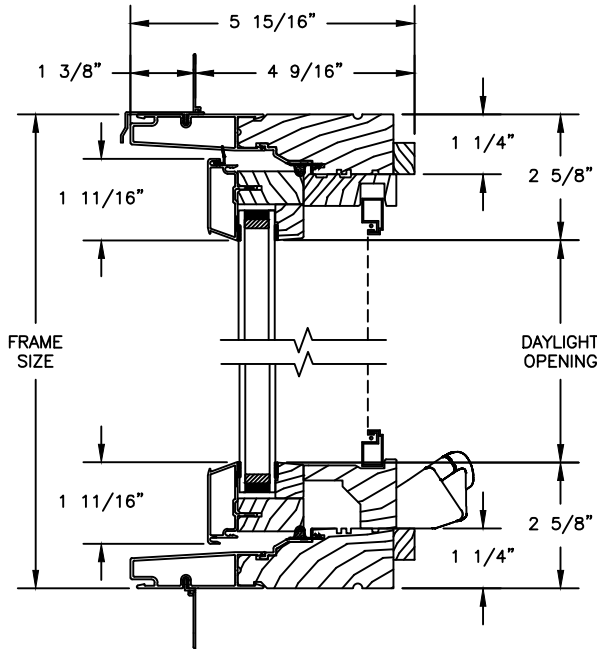
Pinnacle Series

CLAD CASEMENT

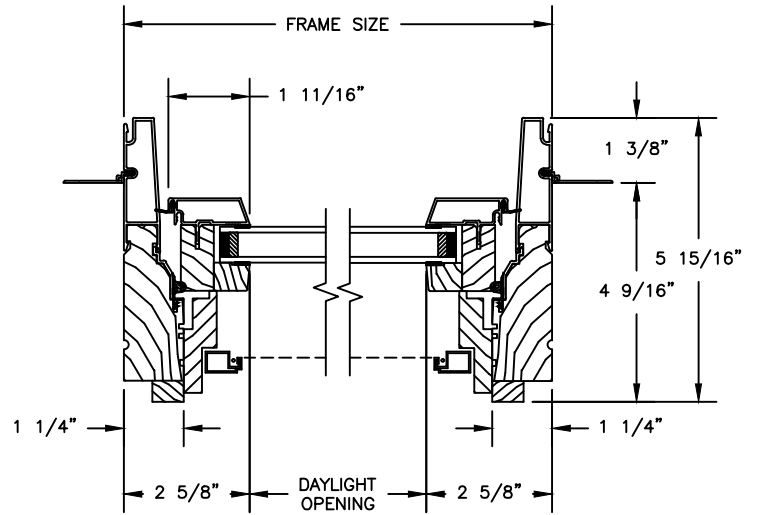
SECTION DETAILS : OPERATING / STATIONARY WITH CONTEMPORARY STOPS

SCALE: 3" = 1'-0"

OPERATING

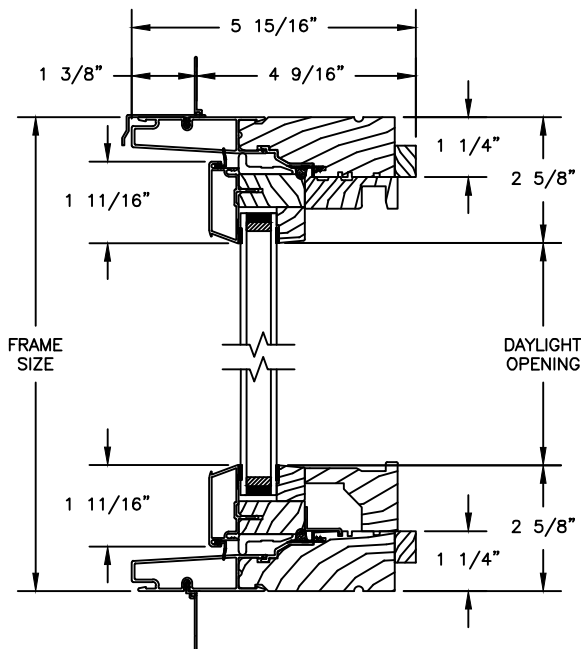


HEAD JAMB & SILL

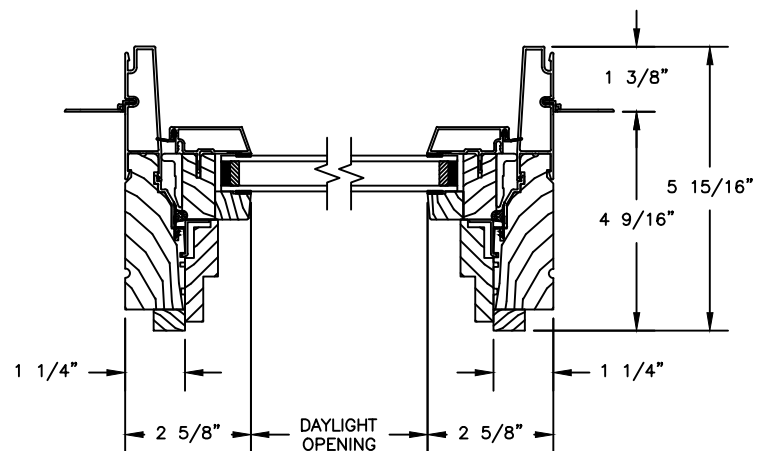


JAMBS

STATIONARY



HEAD JAMB & SILL



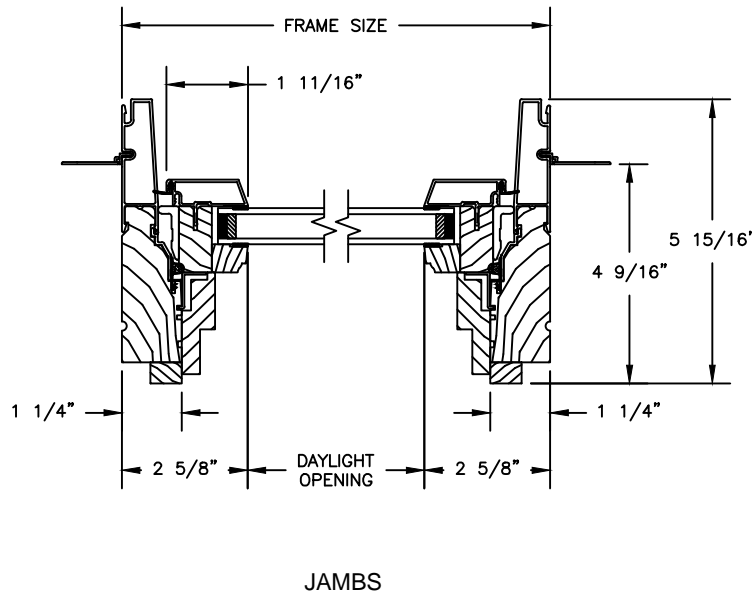
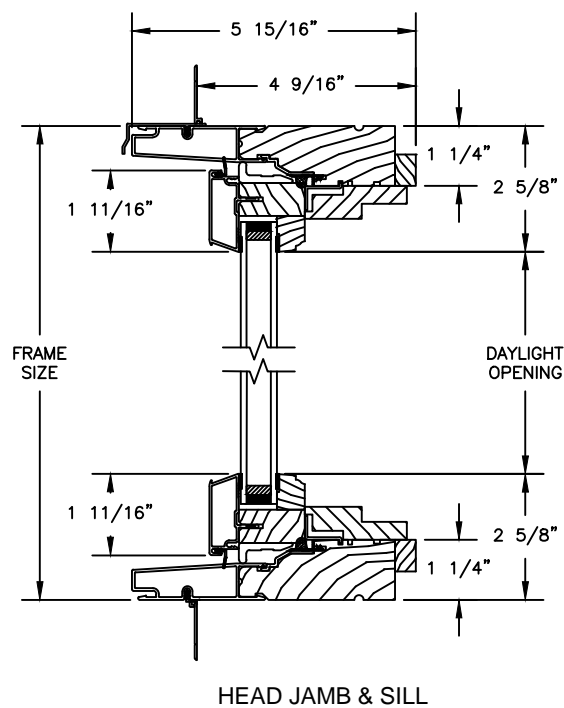
JAMBS

Pinnacle Series

CLAD CASEMENT

SECTION DETAILS : PICTURE / TRANSOM
SCALE: 3" = 1'-0"

PICTURE / TRANSOM



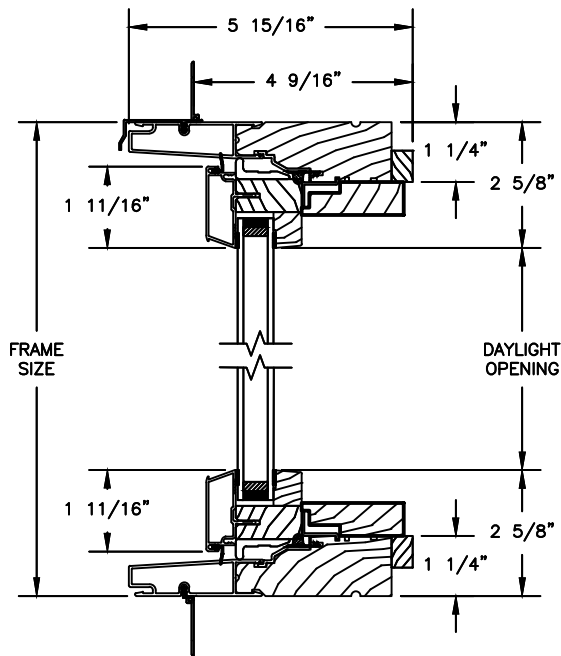
Pinnacle Series

CLAD CASEMENT

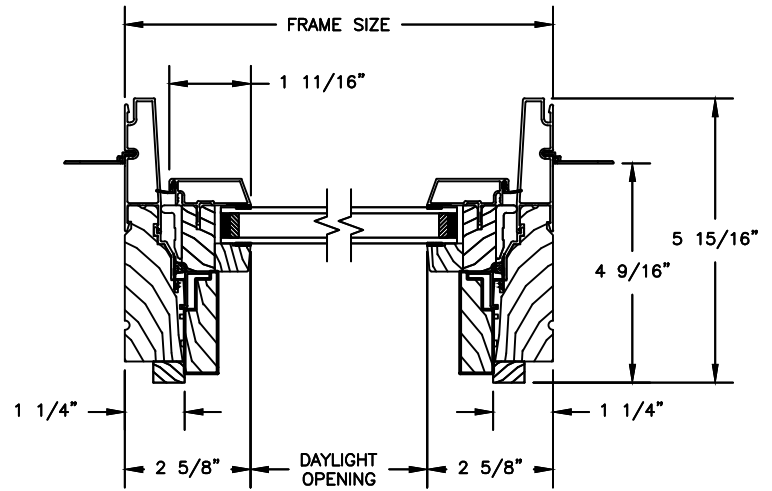
SECTION DETAILS : PICTURE WITH CONTEMPORARY STOPS

SCALE: 3" = 1'-0"

PICTURE



HEAD JAMB & SILL



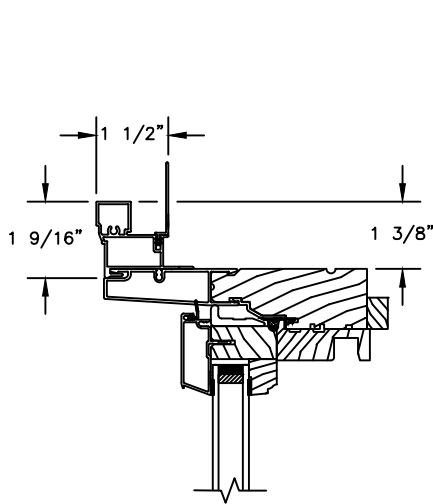
JAMBS

Pinnacle Series

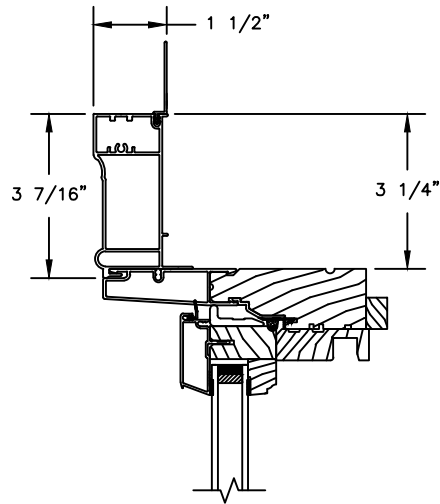
CLAD CASEMENT

SECTION DETAILS : CASING OPTIONS

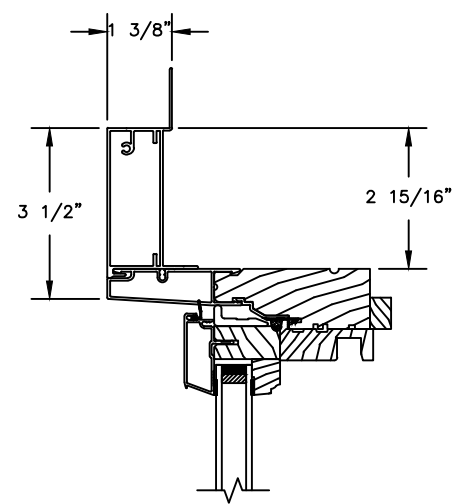
SCALE: 3" = 1'-0"



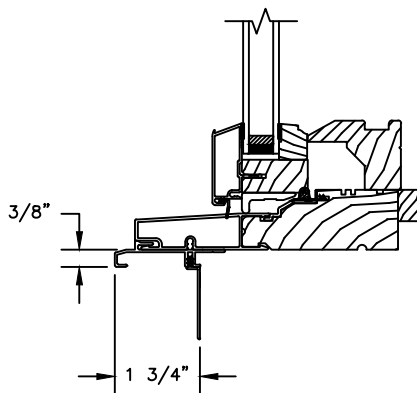
HEAD JAMB WITH
CLAD BRICKMOULD CASING



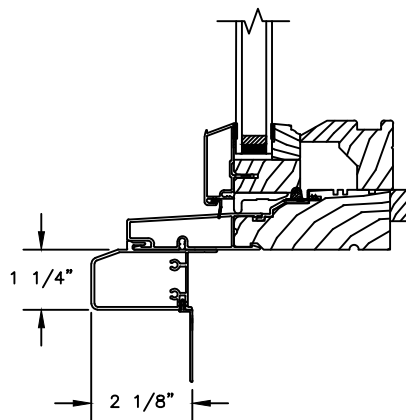
HEAD JAMB WITH
CLAD WILLIAMSBURG CASING



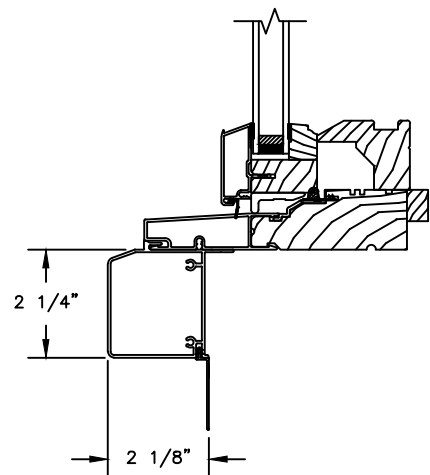
HEAD JAMB WITH
3 1/2" CLAD FLAT CASING



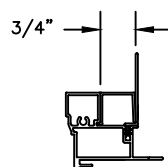
SILL WITH
3/8" CLAD SUBSILL



SILL WITH
1 1/4" CLAD SUBSILL



SILL WITH
2 1/4" CLAD SUBSILL



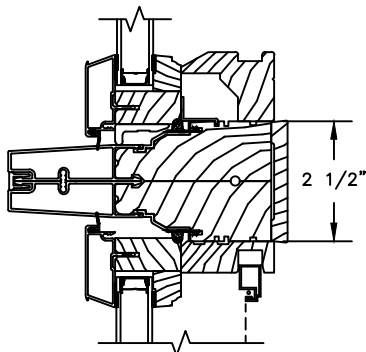
CLAD BRICKMOULD CASING
WITH OPTIONAL J-CHANNEL COVER

Pinnacle Series

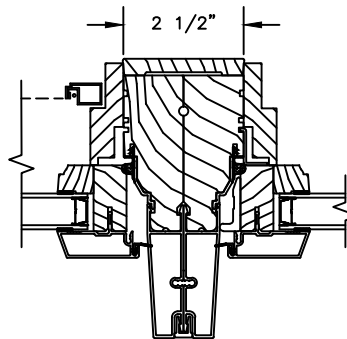
CLAD CASEMENT

SECTION DETAILS : MULLIONS

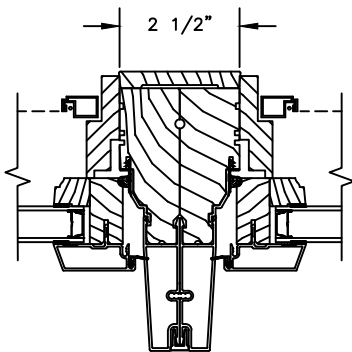
SCALE: 3" = 1'-0"



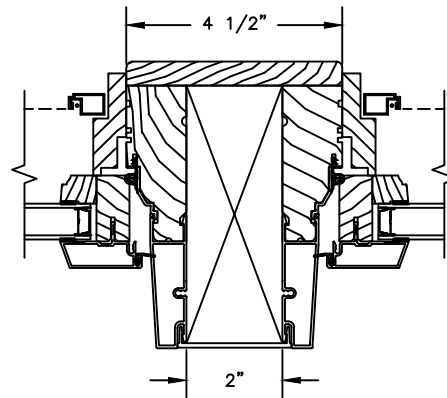
HORIZONTAL MULLION
STATIONARY/OPERATOR



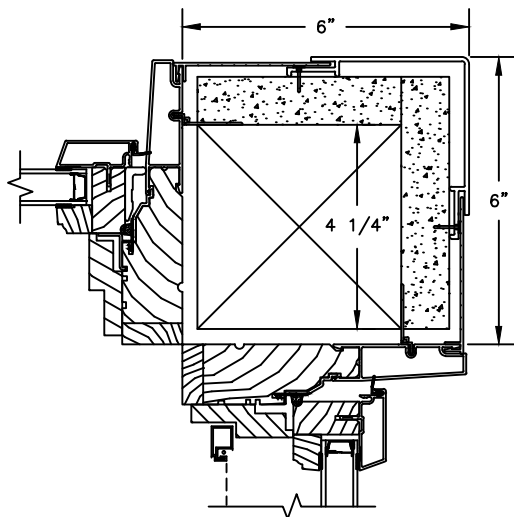
VERTICAL MULLION
OPERATOR/PICTURE



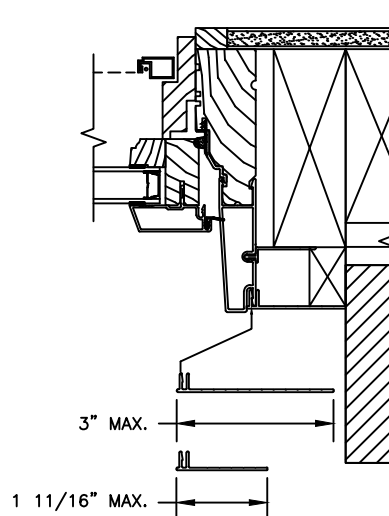
VERTICAL MULLION
OPERATOR/OPERATOR



VERTICAL MULLION WITH
2" SPREAD MULL
ADDITIONAL WIDTHS INCLUDE:
2 1/2", 4" & 6"



90° MULLION
PICTURE/OPERATOR
(ONLY USED WITH 4 9/16" JAMB & 3 1/4"
FRAME EXPANDER)



NOTE:
FOR INFORMATION ON STRUCTURAL MULLIONS REFER TO
THE PRODUCT PERFORMANCE AND INFORMATION SECTION.


Pinnacle Series

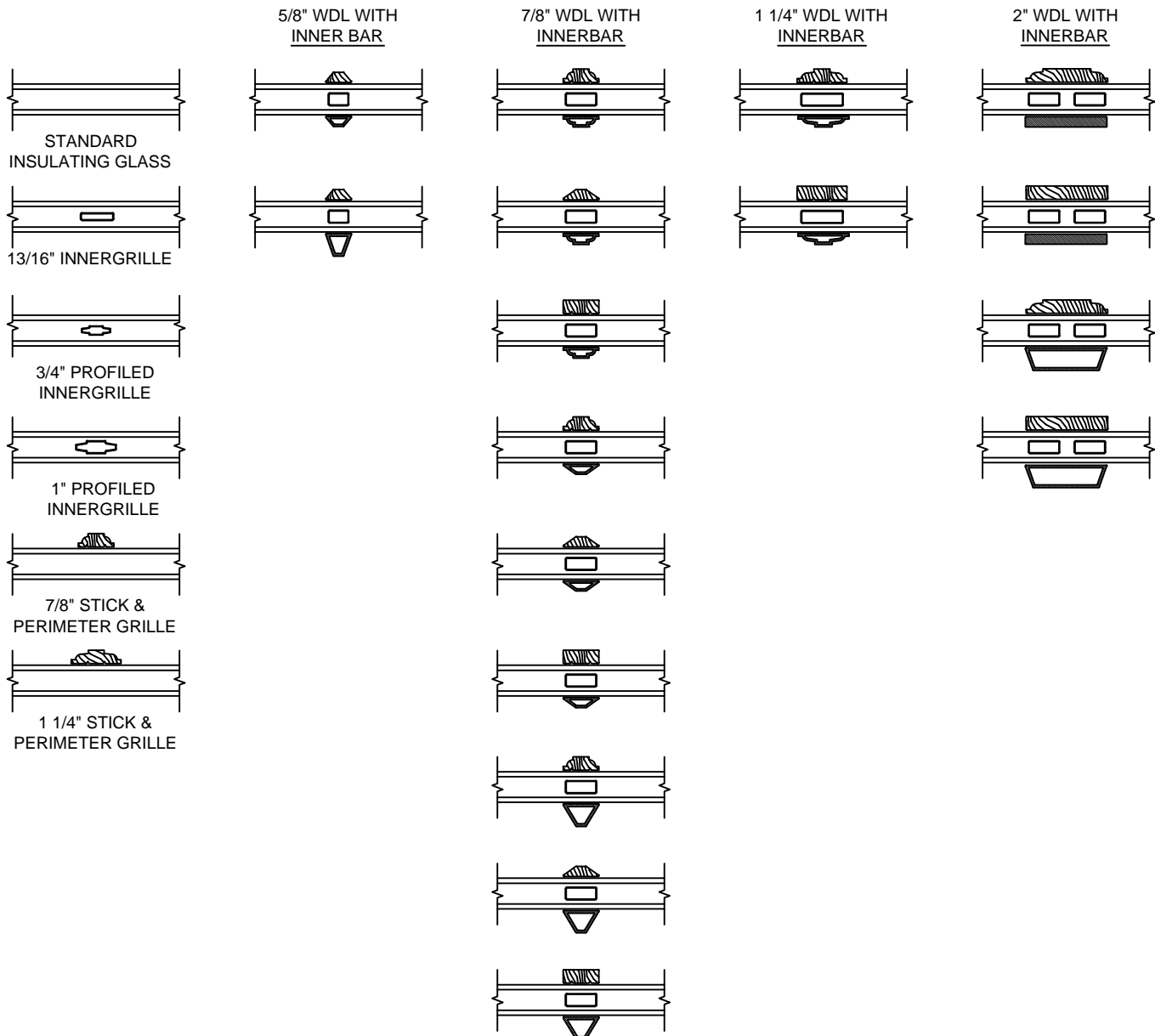
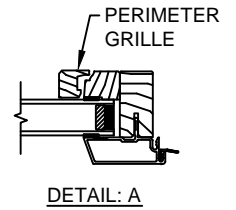
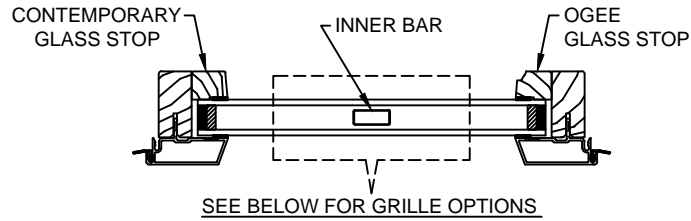
CLAD CASEMENT

SECTION DETAILS : GLASS STOP & DIVIDED LITE OPTIONS

SCALE: 3" = 1'-0"

AVAILABLE STYLES

-  - PUTTY
-  - TALL PUTTY
-  - OGEE
-  - CONTEMPORARY



NOTE:

* ALL WDL OPTIONS CAN BE ORDERED WITH OR WITHOUT INNER BAR

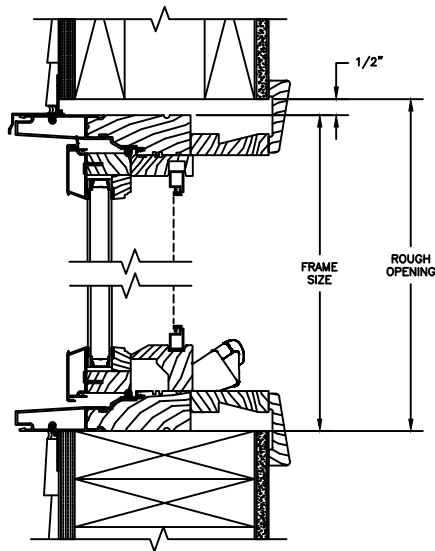
* PERIMETER GRILLES ONLY AVAILABLE IN THE 7/8" AND 1 1/4" OGEE STYLE GLASS STOP (SEE DETAIL: A)

Pinnacle Series

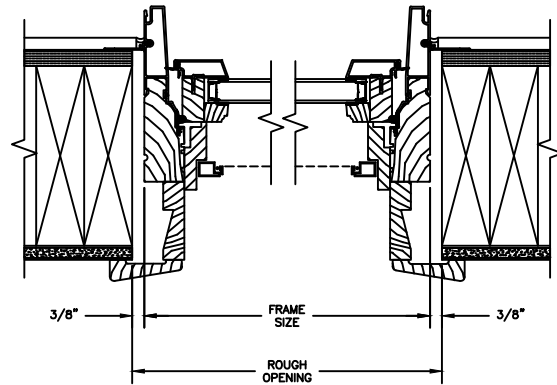
CLAD CASEMENT

SECTION DETAILS : CONSTRUCTION

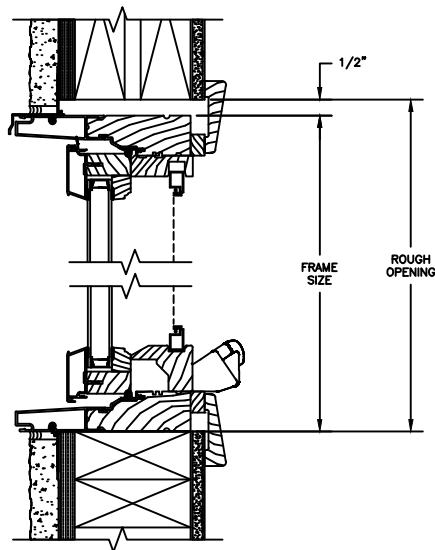
SCALE: 2" = 1'-0"



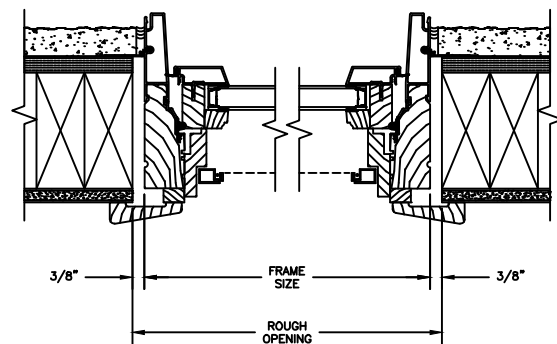
HEAD JAMB & SILL
2 X 6 FRAME WITH SIDING



JAMBS
2 X 6 FRAME WITH SIDING



HEAD JAMB & SILL
2 X 4 FRAME WITH STUCCO



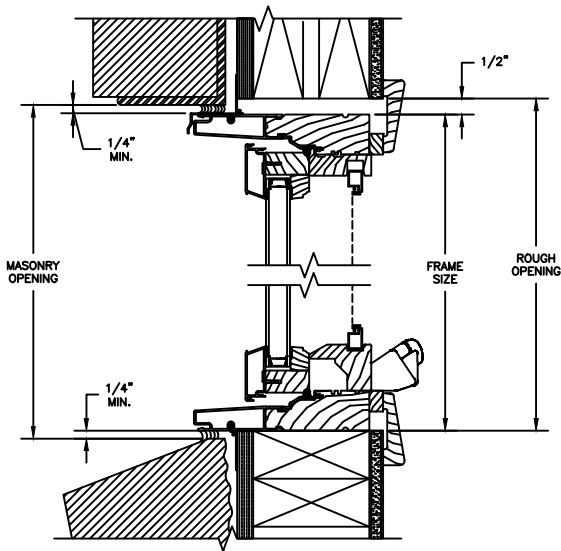
JAMBS
2 X 4 FRAME WITH STUCCO

NOTE :
THE ABOVE WALL SECTIONS REPRESENT TYPICAL WALL CONDITIONS, THESE DETAILS ARE NOT INTENDED AS INSTALLATIONS INSTRUCTIONS. PLEASE REFER TO THE INSTALLATION INSTRUCTIONS PROVIDED WITH THE PURCHASED UNITS.

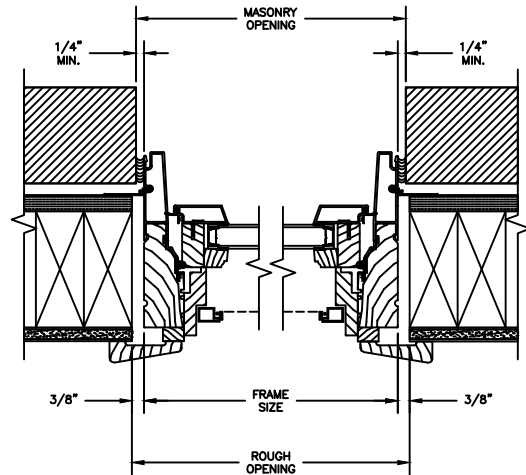
Pinnacle Series

CLAD CASEMENT

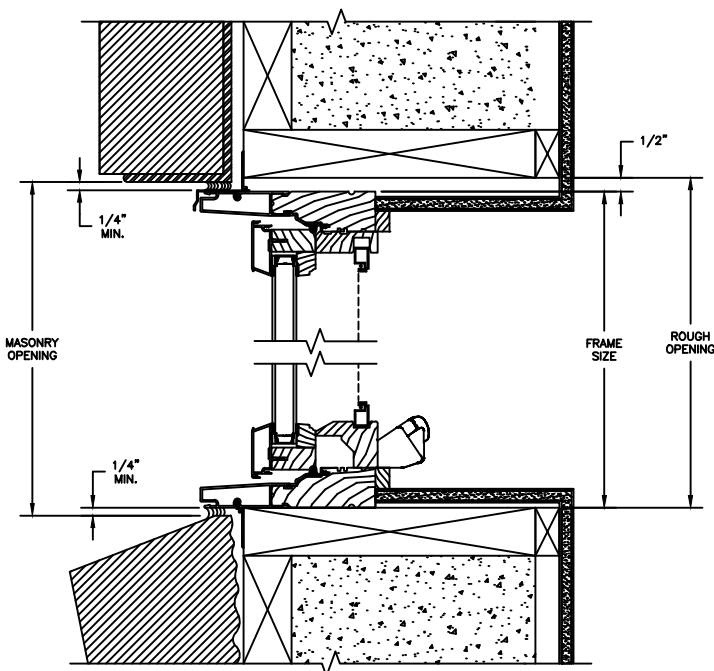
SECTION DETAILS : CONSTRUCTION
SCALE: 2" = 1'-0"



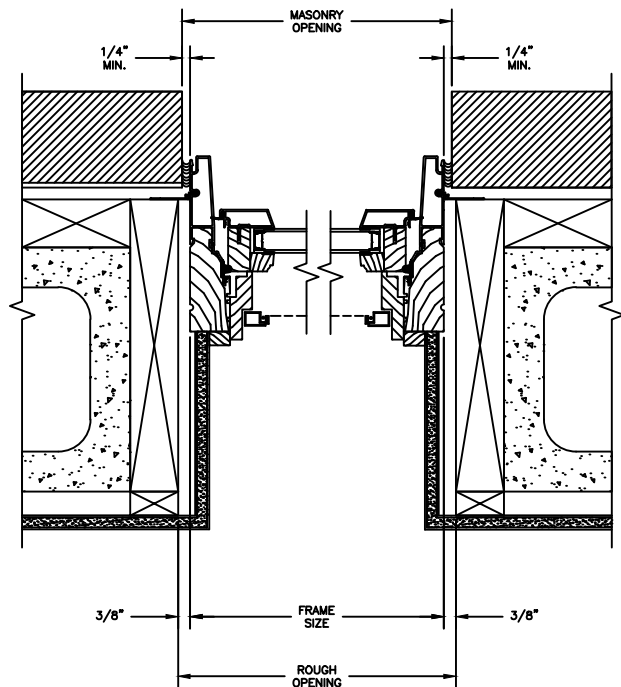
HEAD JAMB & SILL
2 X 4 FRAME WITH BRICK VENEER



JAMBS
2 X 4 FRAME WITH BRICK VENEER



HEAD JAMB & SILL
8" CONCRETE BLOCK WALL
WITH BRICK VENEER

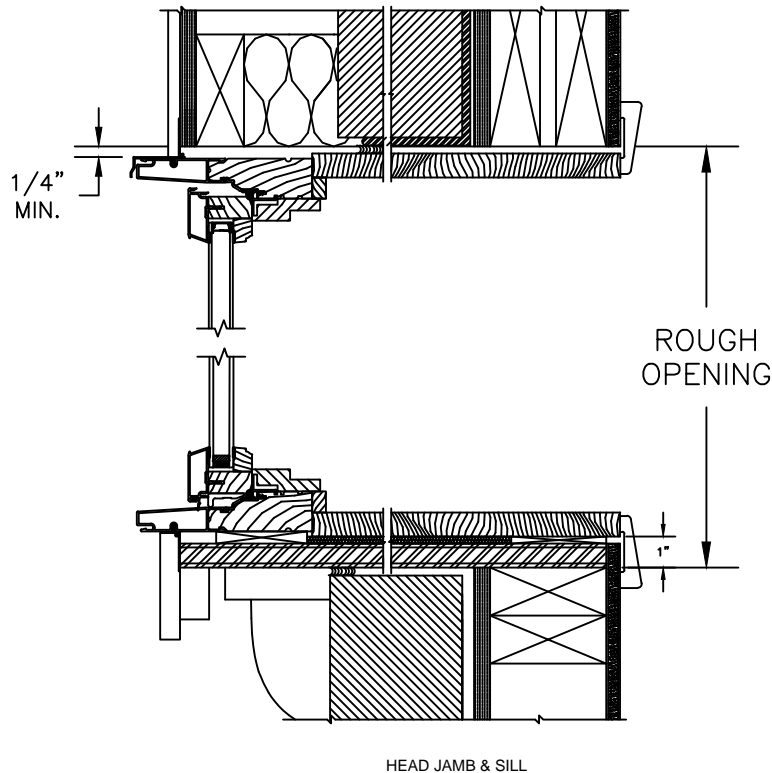


JAMBS
8" CONCRETE BLOCK WALL
WITH BRICK VENEER

Pinnacle Series

CLAD CASEMENT

SECTION DETAILS : BAY & BOW
NOT TO SCALE



NOTES :

3/4" plywood platform and trim by others. Rough opening allows for 3/4" thick platform. Support brackets or cable support must be used. Masonry opening measurements represent units without brickmould casing.

Add 1 1/8" to masonry opening when using clad brickmould casing.

Rough and Masonry opening heights include head and seat boards. If head and seat boards are not specified, subtract 3/4" for each board.
Construction materials supplied by others.

Height Measurements		
BAY & BOW		
Height	R.O. Height	M.O. Height
20	2 - 1 1/4	2 - 1
26	2 - 7 1/4	2 - 7
32	3 - 1 1/4	3 - 1
38	3 - 7 1/4	3 - 7
44	4 - 1 1/4	4 - 1
50	4 - 7 1/4	4 - 7
56	5 - 1 1/4	5 - 1
62	5 - 7 1/4	5 - 7
68	6 - 1 1/4	6 - 1
74	6 - 7 1/4	6 - 7

How to Specify:

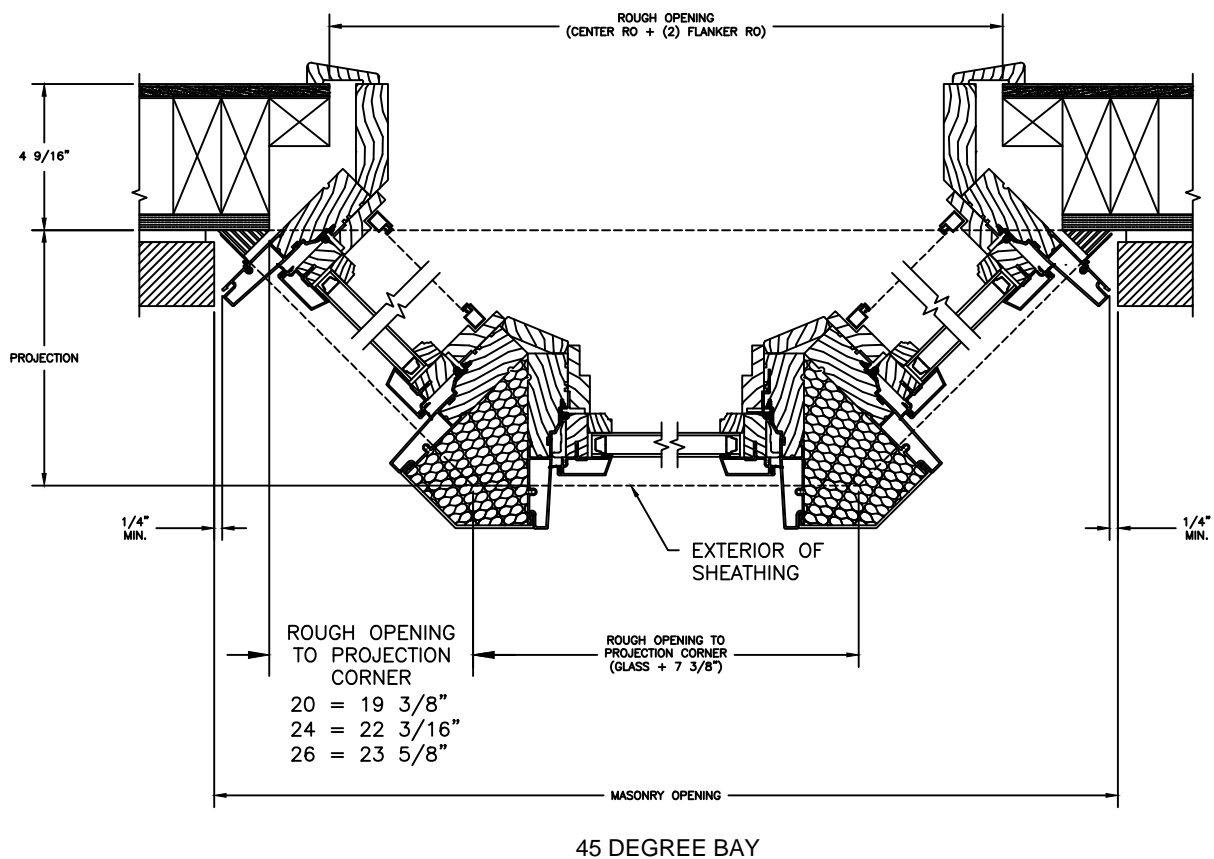
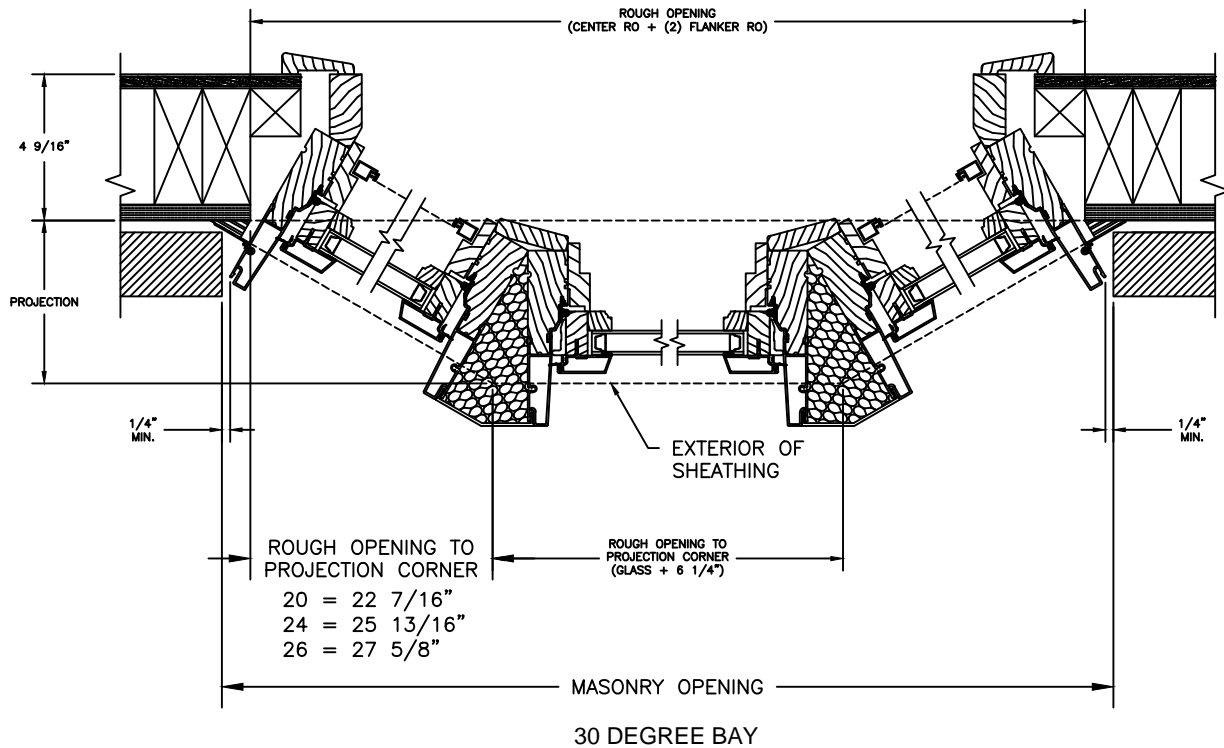
To specify a bay assembly using standard units, components mull configurations must be indicated. For example: a 30 degree assembly with 2044 flankers and a 4444 center unit uses the following product identification: Clad 20-44-2044 LSR. If standard units are not used, indicate unit frame size instead of callout.

Pinnacle Series

CLAD CASEMENT

SECTION DETAILS : 30/45 DEGREES BAY

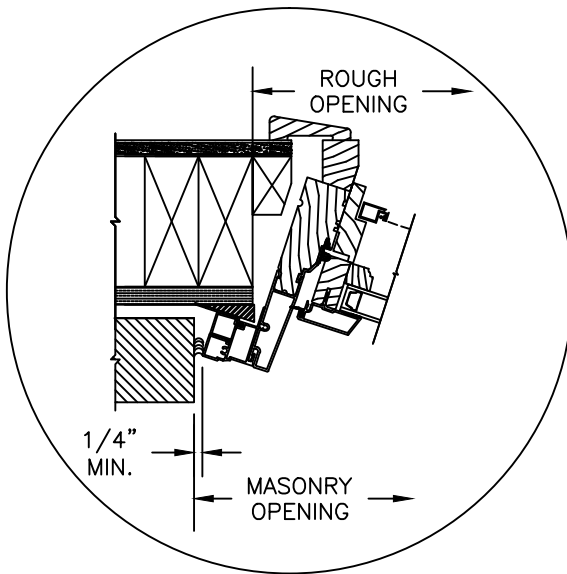
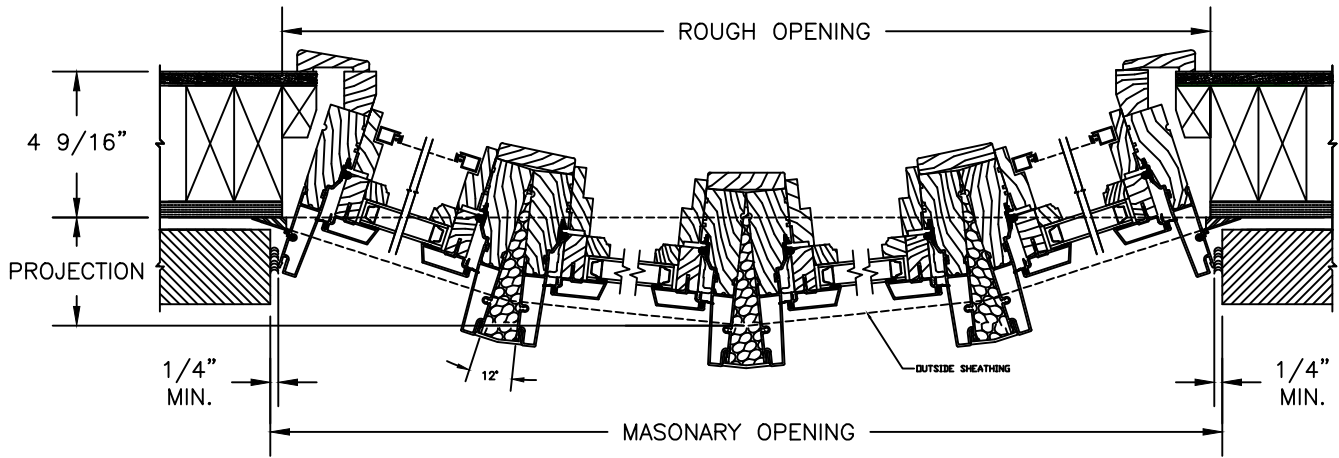
SCALE: 2" = 1'-0"



Pinnacle Series

CLAD CASEMENT

SECTION DETAILS : BOW
NOT TO SCALE



BOW WITH OPTIONAL
CLAD BRICKMOULD CASING

NOTES :

Unit and masonry openings represent units without casing. For a 4 wide bow masonry opening width using clad brickmould casing add 3 5/8" to the rough opening width and for a 5 wide add 4 1/16." For a 4 wide bow masonry opening width using flat casing add 7 1/2" to the rough opening width and for a 5 wide add 8 1/16." Construction materials supplied by others.

Width Measurements					
4-WIDE					
Width	Outside Radius	Unit Width	M.O. Width	R.O. Width	Projection
14	7 - 5 7/8	6 - 1 1/2	6 - 2	6 - 1 1/8	8 1/8
16	8 - 3 5/8	6 - 9 1/4	6 - 9 3/4	6 - 8 7/8	8 7/8
20	9 - 10 5/8	8 - 0 3/4	8 - 1 1/4	8 - 0 1/2	10 5/8
24	11 - 5 3/4	9 - 4 7/8	9 - 4 7/8	9 - 4	12 5/8
26	12 - 3 3/8	10 - 0 1/8	10 - 0 5/8	9 - 11 3/4	13 1/8
32	14 - 8	11 - 11 1/2	12 - 0	11 - 11 1/4	15 1/2
5-WIDE					
14	7 - 7 3/4	7 - 6 5/8	7 - 7 1/8	7 - 5 3/4	12
16	8 - 5 3/8	8 - 4 1/8	8 - 4 5/8	8 - 3 1/4	13 1/4
20	10 - 0 1/4	9 - 11 1/4	9 - 11 3/4	9 - 10 1/2	15 3/4
24	11 - 7 3/8	11 - 6 3/8	11 - 6 7/8	11 - 5 7/8	18 1/8

*Projection is defined as the dimension from the back of the nailing flange to the exterior of the wall sheathing.

NOTES :

For standard bow assembly, note the product type, size identification(s), configuration, number of units wide and operation(s). Example: 2044-4 LSSR. For custom sized units and assemblies use the individual unit rough opening size in place of the standard size identification(s). To obtain more information on custom bows please contact your Windsor representative.