

1. ALL FASTENERS SHALL BE IN ACCORDANCE WITH THESE DRAWINGS. SPECIFIED ANCHOR EMBED TO BASE MATERIAL SHALL BE BEYOND WALL FINISH OR STUCCO.

2. OPENINGS, BUCKING & BUCKING FASTENERS MUST BE PROPERLY DESIGNED & INSTALLED TO TRANSFER WIND LOADS TO THE STRUCTURE.

3. THESE LARGE MISSILE IMPACT RATED WINDOW SYSTEM INSTALLATIONS ARE IN ACCORDANCE WITH AND MEET THE REQUIREMENTS OF THE FLORIDA BUILDING CODE (FBC).

4. ANCHORS SECURING WINDOW FRAME TO PRESSURE TREATED BUCKS OR WOOD FRAMING SHALL BE CAPABLE OF RESISTING CORROSION CAUSED BY THE PRESSURE TREATING CHEMICALS IN THE WOOD.

5. NO INCREASE IN ALLOWABLE STRESS HAS BEEN USED IN THE CERTIFICATION OF THESE INSTALLATIONS. WIND LOAD DURATION FACTOR $C_d = 1.6$ WAS USED FOR WOOD SCREW ANALYSIS ONLY.

6. MATERIALS, INCLUDING BUT NOT LIMITED TO STEEL SCREWS, THAT COME INTO CONTACT WITH OTHER DISSIMILAR MATERIALS SHALL MEET THE REQUIREMENTS OF FLORIDA BUILDING CODE CHAPTER 20.

7. THE QUALITY CONTROL RECORDS SHOWN HEREIN ARE CERTIFIED & QUALITY ASSURED BY A FLORIDA STATE APPROVED CERTIFICATION/QA ENTITY & SHALL BE LABELED IN ACCORDANCE WITH THE FBC AND THE 98-72 FLORIDA BUILDING COMMISSION SPECIFICATIONS. WINDOW ASSEMBLY IS NOT PART OF THIS DRAWING AND SHALL BE IN ACCORDANCE WITH THE MANUFACTURER'S QUALITY ASSURANCE SPECIFICATIONS & TESTING REPORTS.

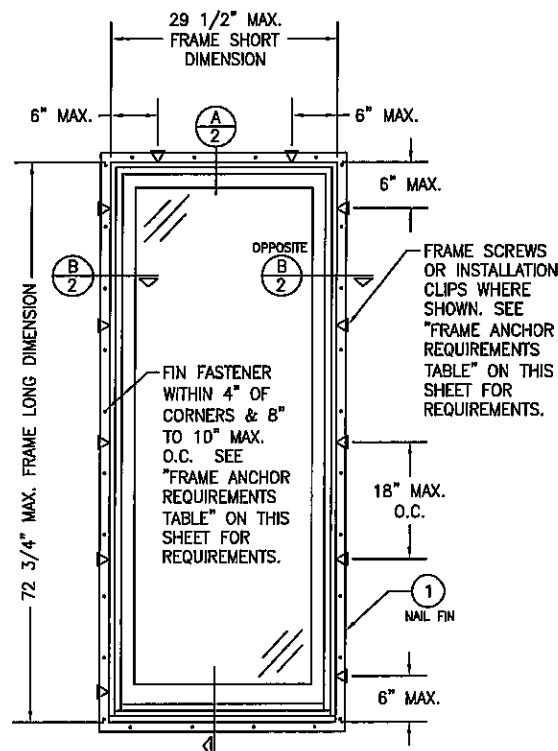
8. CERTIFICATION OF THESE WINDOW INSTALLATIONS SHALL BE CONSIDERED VOID IF ANY OF THE FOLLOWING APPLY: 1) THEY ARE INSTALLED WITHOUT A BUILDING PERMIT FROM THE APPLICABLE LOCAL BUILDING DEPARTMENT. 2) IF THEY ARE INSTALLED BY ANYONE OTHER THAN A LICENSED CONTRACTOR EXPERIENCED WITH WINDOW INSTALLATIONS. 3) IF CHANGES HAVE OCCURRED TO THE PRODUCT'S CERTIFICATION ENTITY'S CERTIFICATE THAT CAUSE THESE INSTALLATIONS TO BE INCORRECT OR INCONSISTENT WITH WHAT HAS BEEN TESTED.

9. THE LEAST DESIGN PRESSURE SPECIFIED EITHER IN THIS DRAWING OR IN THE PRODUCT'S CERTIFICATION SHALL CONTROL FOR THE INSTALLED WINDOW.

10. THESE DRAWINGS CERTIFY THE WINDOW INSTALLATION ONLY. WATER PROOFING OF THE INSTALLED WINDOWS IS NOT PART OF THIS INSTALLATION CERTIFICATION. THAT RESPONSIBILITY SHALL BE THAT OF THE MANUFACTURER &/OR INSTALLER.

INSTALLATION EVALUATION IS BASED ON APPLICABLE ANCHOR STANDARDS AND/OR INFORMATION & RESULTS FROM APPLICABLE TEST REPORTS. THE FLORIDA BUILDING CODE VERSION CONSIDERED WITH THE EVALUATION WAS THAT IN FORCE AT THE TIME OF THE EVALUATION. IN THE EVENT OF CODE VERSION CHANGES/UPDATES OR IN THE EVENT THAT NEW OR ADDITIONAL TESTING IS COMPLETED ON THE REFERENCED PRODUCT, PRIOR TO STATING CODE COMPLIANCE WITH THE STATE, THE MANUFACTURER SHALL CONFORM WITH THE INSTALLATION EVALUATION ENGINEER OF RECORD THAT THE EVALUATION SPECIFIC HEREIN ARE CURRENT WITH THEIR CURRENT TESTING.

ALL ALTERNATE ANCHORS IN THEIR SPECIFIED SUBSTRATES HAVE BEEN ANALYZED IN ACCORDANCE WITH THEIR APPLICABLE STANDARD(S) AND ARE FOUND TO BE EQUIVALENT TO OR STRONGER THAN THE ANCHOR(S) USED IN TESTING WITH THIS PRODUCT.



EXTERIOR ELEVATION:
SINGLE DOUBLE HUNG PICTURE WINDOW
SCALE: $\frac{3}{4}" = 1'-0"$

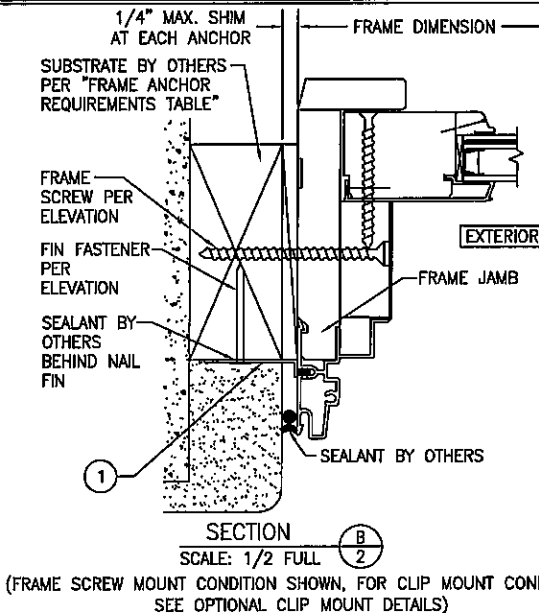
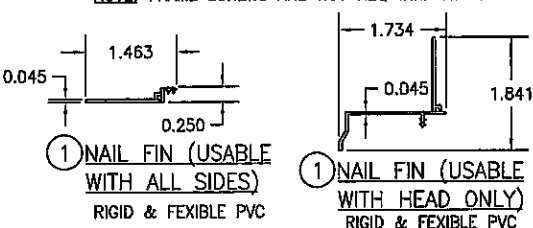
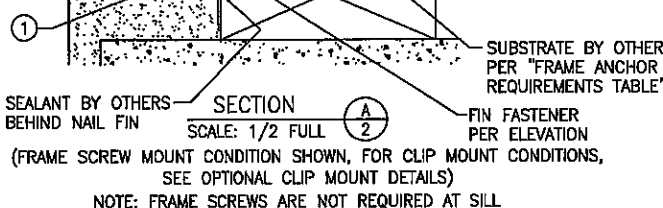
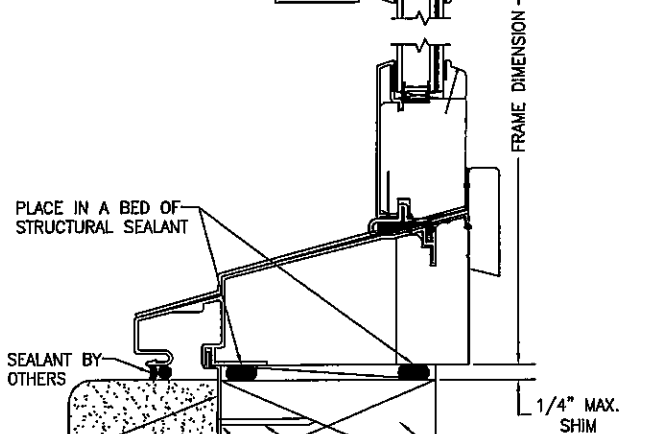
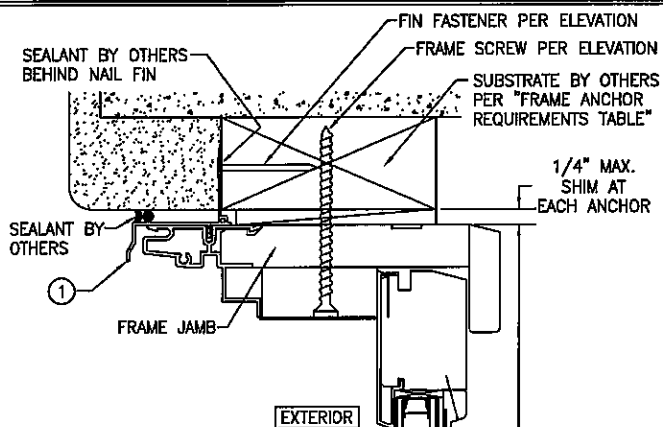
| OPENING TYPE (SUBSTRATE) | FRAME/CLIP/NAIL FIN TO OPENING FASTENER TYPE | MINIMUM EMBED | MINIMUM EDGE DIST. |
|--|---|------------------|-----------------------|
| FRAME SCREWS | | | |
| MIN. 2X4 WOOD FRAME OR BUCK (MIN. GR. 3 & G=0.55) | NO. 8 SMS OR WOOD SCREW | 1 1/4" | 3/4" |
| MIN. 1/8" THK A36 STEEL | NO. 8 GR. 5 SELF TAP/DRILL SCREW | FULL | 1/2" |
| MIN. 1/8" THK 6063-T5 ALUM. | NO. 8 GR. 5 SELF TAP/DRILL SCREW | FULL | 1/2" |
| INSTALLATION CLIP SCREWS | | | |
| MIN. 2X4 WOOD FRAME OR BUCK (MIN. GR. 3 & G=0.55) | NO. 8 SMS OR WOOD SCREW | 1 3/8" | 1/2" |
| MIN. 1/8" THK A36 STEEL | NO. 8 GR. 5 SELF TAP/DRILL SCREW | FULL | 1/2" |
| MIN. 1/8" THK 6063-T5 ALUM. | NO. 8 GR. 5 SELF TAP/DRILL SCREW | FULL | 1/2" |
| (1) NAILING FIN FASTENERS | | | |
| MIN. 2X4 WOOD FRAME OR BUCK (MIN. GR. 3 & G=0.55) | NO. 8 X 1 1/2" SMS | 1 3/8" | 1/2" |
| MIN. 2X4 WOOD FRAME OR BUCK (MIN. GR. 3 & G=0.55) | 1 3/4" X 11 GA. ROOFING NAIL | 1 1/2" | 1/2" |
| MIN. 1/8" THK A36 STEEL | NO. 8 GR. 5 SELF TAP/DRILL SCREW | FULL | 1/2" |
| MIN. 1/8" THK 6063-T5 ALUM. | NO. 8 GR. 5 SELF TAP/DRILL SCREW | FULL | 1/2" |
| (1) WHEN SCREWS ARE USED WITH THE NAIL FIN, THEY MUST BE A WAFFLE HEAD SCREW OR HAVE A FLAT WASHER AT THE SCREW HEAD. | | | |

+/-50 PSF

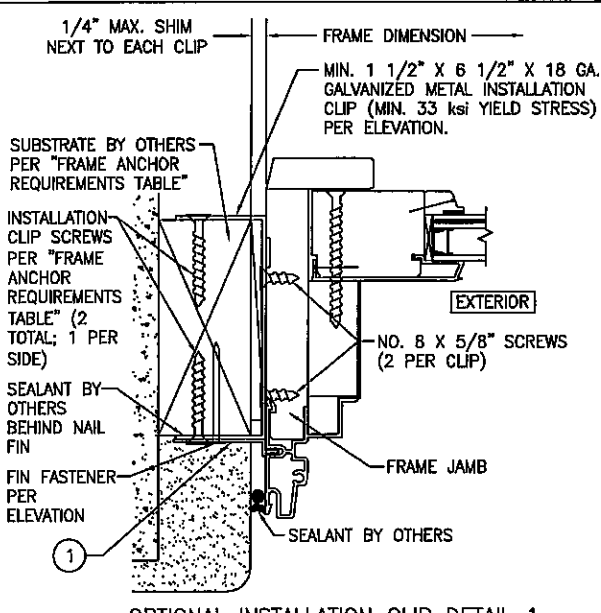
1. PRESSURE SHOWN IN THIS TABLE IS FOR INSTALLATION CONDITIONS ONLY. THE GOVERNING DESIGN PRESSURE ON THE WINDOWS SHALL BE THE LESSER OF THAT SHOWN IN THE INDIVIDUAL WINDOW'S STATE APPROVAL OR THAT SHOWN IN THIS TABLE.

2. APPROVED FOR USE IN WIND ZONES 1, 2 & 3 (WIND SPEEDS 140 MPH & LESS)

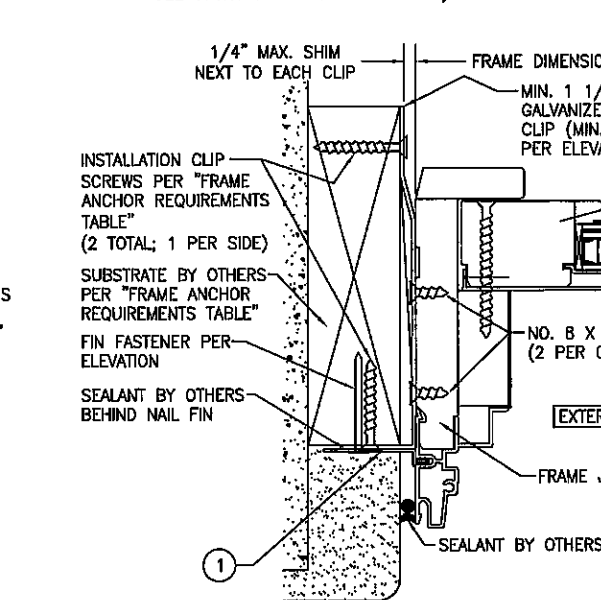
| | | | | | | | | | | | | | | | | | |
|----------------|-------------|------|-----------|--|--|-----|-----------------------------|-----|----------|----------|----------|------------|---------|------|------|---------|--------|
| DRAWING TITLE | DRAWING NO. | REV. | SHEET NO. | CONSULTANTS | MANUFACTURER | NO. | REASON DESCRIPTION | BY | DATE | DRAWN BY | DATE | CHECKED BY | DATE | PLD. | 1-18 | 1/15/05 | W.M.S. |
| | | | | | | | | | | | | | | | | | |
| WINDSOR WINDOW | 1371 | B | 1 OF 2 | W. W. SCHAEFER ENGINEERING & CONSULTING, P.A. 6992 N. MILITARY TRAIL, SUITE C-204 WEST DES MOINES, IA 50265 PHONE: 561-2775-4902 FAX: 561-2775-4903 | WINDSOR WINDOWS & DOORS 900 S. 19TH STREET WEST DES MOINES, IA 50265 800-218-6186 | AT | UPDATE TO PRESENT STANDARDS | WMS | 06/16/05 | WMS | 06/16/05 | WMS | 1/15/05 | WMS | 1-18 | 1/15/05 | W.M.S. |



SECTION B
SCALE: 1/2 FULL
(FRAME SCREW MOUNT CONDITION SHOWN, FOR CLIP MOUNT CONDITIONS, SEE OPTIONAL CLIP MOUNT DETAILS)



OPTIONAL INSTALLATION CLIP DETAIL 1
(SIDE SECTION SHOWN, HEAD IS INSTALLED THE SAME)
NOTE: INSTALLATION CLIPS NOT REQUIRED AT SILL



OPTIONAL INSTALLATION CLIP DETAIL 2
(SIDE SECTION SHOWN, HEAD IS INSTALLED THE SAME)
NOTE: INSTALLATION CLIPS NOT REQUIRED AT SILL

| DRAWING TITLE | DRAWN BY | S.I.R. | CHECKED BY | W.S. | DATE | REV. | BY | DATE | NO. | REVISION DESCRIPTION | MANUFACTURER | CONSULTANTS | CERTIFICATION | SHEET NO. | OF | 2 |
|---|---|----------------|----------------|----------------|---------|------|----|------|-----|----------------------|--|---|--|-----------|----|---|
| | | | | | | | | | | | | | | | | |
| PINNACLE ALUMINUM CLAD WOOD IMPACT DOUBLE HUNG PICTURE WINDOW | W. W. SCHAEFER ENGINEERING & CONSULTING, P.A. | W. W. SCHAEFER | W. W. SCHAEFER | W. W. SCHAEFER | 1/13/05 | | | | | | WINDSOR WINDOWS & DOORS 900 S. 19TH STREET WEST DES MOINES, IA 50265 800-218-6186 | W. W. SCHAEFER ENGINEERING & CONSULTING, P.A. 888 N. MILITARY TRAIL SUITE C-204 DES MOINES, IA 50319 PHONE: 561-775-4802 FAX: 561-775-4903 | WARREN W. SCHAEFER, P.E. P.E. NO. 44133 | 1371 | 2 | 2 |