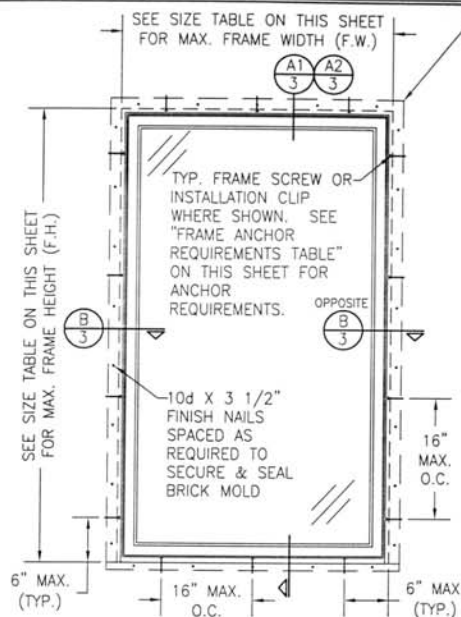


WINDOW ALLOWABLE SIZE TABLE	
MAXIMUM FRAME DIMENSIONS	
SHORT SIDE (IN.)	LONG SIDE (IN.)
(1) 60 1/2	61
54	68
48	76
36	102
30	123
24	153
(1) = TESTED SIZE	



EXTERIOR ELEVATION  
SINGLE FIXED CASEMENT WINDOW  
SCALE: 3/4"=1'-0"

ALLOWABLE DESIGN PRESSURE  
(SINGLE WINDOW)  
+/-47 PSF

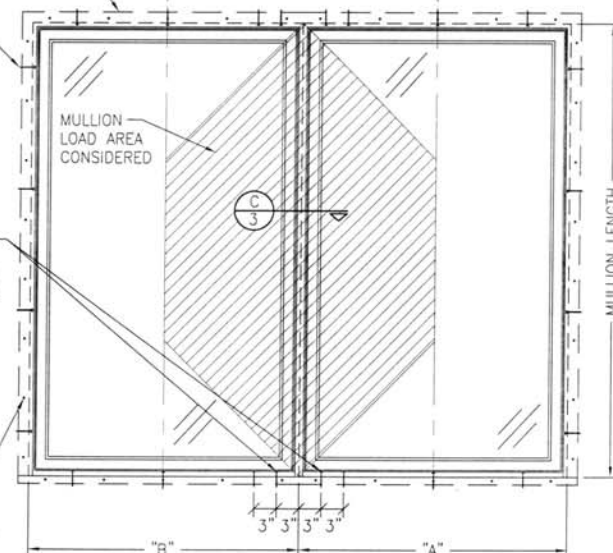
BRICK MOLD IS OPTIONAL & MAY BE REMOVED IF REQUIRED BY OPENING CONDITIONS. (BRICK MOLD SHALL NOT ACT AS A SUBSTITUTE FOR THE FRAME ANCHORS SPECIFIED)

TYP. FRAME SCREW OR INSTALLATION CLIP PER SINGLE WINDOW ELEVATION

ADDITIONAL SHEAR SCREWS OR INSTALLATION CLIPS WHERE SHOWN AT MULLION ENDS. SEE "FRAME ANCHOR REQUIREMENTS TABLE" ON THIS SHEET FOR ANCHOR REQUIREMENTS. (NOT REQUIRED WHEN MULLION LENGTH IS 48" OR LESS)

10d X 3 1/2" FINISH NAILS SPACED AS REQUIRED TO SECURE & SEAL BRICK MOLD

CENTER OF WINDOW  
LOAD WIDTH = (A+B)/2  
CENTER OF WINDOW



FIXED CASEMENT TO FIXED CASEMENT WHEN WINDOW WIDTHS ARE LESS THAN OR EQUAL TO THE MULLION LENGTH  
(SEE MULLION LOAD TABLE)

(DOUBLE WINDOW SHOWN. MORE THAN 2 WINDOWS MAY BE MULLED TOGETHER IN ONE DIRECTION INTO ONE OPENING.)  
NOTE: MULLION MAY BE HORIZONTAL OR VERTICAL  
SEE SINGLE WINDOW ELEVATION FOR DETAIL NOT SHOWN

#### MULTIPLE UNIT NOTES:

1. THE MAXIMUM ALLOWABLE PRESSURE FOR A COMBINED UNIT IS RESTRICTED BY THE LESSER OF THE INDIVIDUAL WINDOW ALLOWABLE PRESSURE OR THE ALLOWABLE MULLION PRESSURE. SEE MULLION LOAD TABLE ON SHEET 2 FOR ALLOWABLE UNIT PRESSURE.
2. WINDOWS MAY BE STACKED HORIZONTAL OR VERTICAL. (IF VERTICALLY STACKED, MANUFACTURER MUST INSURE THAT THE DEAD WEIGHT OF THE WINDOWS DOES NOT CAUSE ANY WINDOW FAILURES OR DEFORMATIONS)

#### GENERAL NOTES

1. THESE WINDOW SYSTEMS HAVE BEEN TESTED, ANALYZED & APPROVED FOR DESIGN PRESSURES NOT TO EXCEED THOSE SHOWN IN THE "ALLOWABLE DESIGN PRESSURE" TABLES.
2. BUCKING, OPENINGS & BUCKING FASTENERS MUST BE PROPERLY DESIGNED & INSTALLED TO TRANSFER WIND LOADS TO THE STRUCTURE.
3. ALL HARDWARE & FASTENERS SHALL BE IN ACCORDANCE WITH THESE DRAWINGS & MAY NOT VARY UNLESS SPECIFICALLY MENTIONED ON THE DRAWINGS.
4. THESE WINDOW SYSTEMS HAVE BEEN DESIGNED IN ACCORDANCE WITH & MEET THE REQUIREMENTS OF THE FLORIDA BUILDING CODE (F.B.C.).
5. THESE WINDOWS HAVE BEEN TESTED IN ACCORDANCE WITH ANSI/AAMA/NWMA 101/I.S. 2-97 "VOLUNTARY SPECIFICATIONS FOR ALUMINUM, VINYL (PVC) AND WOOD WINDOWS AND GLASS DOORS." REFERENCE TEST REPORTS NO. 382-0313.2, 383-0196.17-2 & 383-0196.10 BY STORK TWIN CITY TESTING CORP. AS APPLICABLE TO THESE DRAWINGS.
6. TESTS COMPLETED INCLUDE AIR INFILTRATION PER ASTM E283, WATER RESISTANCE PER ASTM E547 &/OR E331, UNIFORM LOAD STRUCTURAL PER ASTM E330 & FORCED ENTRY PER ASTM F588.
7. THESE WINDOW SYSTEMS ARE NON-IMPACT RATED & MUST BE SHUTTERED WHERE REQUIRED BY CODE.
8. ALL WINDOW SIZES SPECIFIED AS ALLOWABLE IN THE "WINDOW ALLOWABLE SIZE TABLE" HAVE BEEN COMPARED TO THE TESTED UNITS AND ARE RESTRICTED BY THE OVERALL SIZE (AREA) OF THE TESTED UNITS.
9. GLASS SHALL BE AS SPECIFIED IN THE GLAZING DETAIL(S). GLASS TO BE USED ON ANY SPECIFIC WINDOW SHALL BE AS REQUIRED BY ASTM E1300-00 TO MEET THE JOB SPECIFIED WINDOW DESIGN PRESSURES.
10. TO THE BEST OF OUR KNOWLEDGE, THE WINDOWS SHOWN HEREIN ARE CERTIFIED AND/OR QUALITY ASSURED BY A FLORIDA STATE APPROVED CERTIFICATION/OA ENTITY & SHALL BE LABELED IN ACCORDANCE WITH THE STATE CODE & CHAPTER 98-72 DEPARTMENT OF COMMUNITY AFFAIRS-FLORIDA BUILDING COMMISSION SPECIFICATIONS. BY LABELING THE WINDOW, THE MANUFACTURER CONFIRMS THAT THE PRODUCT IS ASSEMBLED IN ACCORDANCE WITH THEIR RESPECTIVE QA & TESTING REPORTS.
11. THESE DRAWINGS SHOW ALL APPLICABLE ELEVATION, COMBINATION, INSTALLATION & COMPARATIVE ANALYSIS CONDITIONS AS DETERMINED THROUGH TESTING & ENGINEERING RATIONAL ANALYSIS. WINDOW ASSEMBLY SHALL BE IN ACCORDANCE WITH THESE DRAWINGS, THE MANUFACTURER'S QUALITY ASSURANCE SPECIFICATIONS & TESTING REPORTS.
12. IF ANY DEVIATION OCCURS BETWEEN THE INFORMATION ON THIS DRAWING & THE PRODUCT LABEL, THIS DRAWING SHALL CONTROL.

#### FRAME ANCHOR REQUIREMENTS TABLE

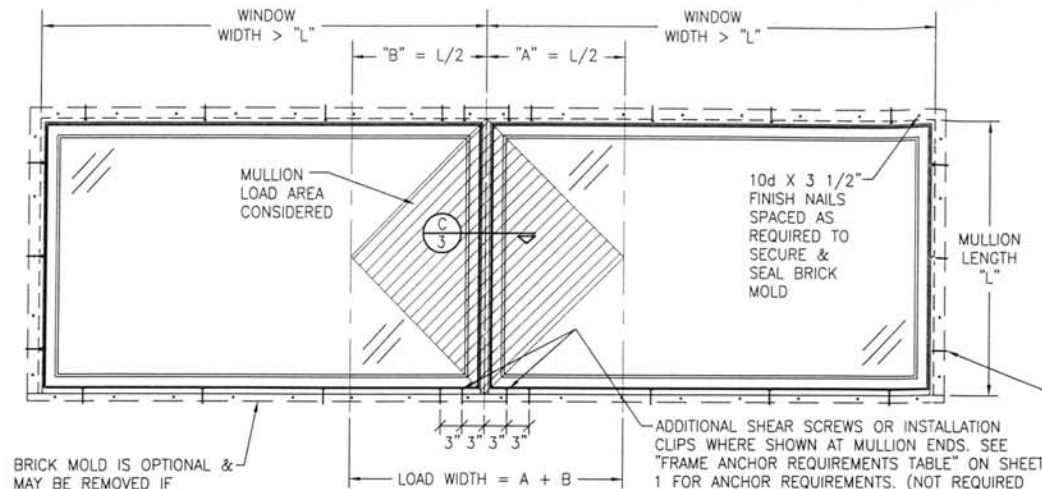
INSTALLATION CLIP ANCHORS			
OPENING TYPE (SUBSTRATE)	JAMB/CLIP TO OPENING FASTENER TYPE	MINIMUM EMBED	MINIMUM EDGE DIST.
2X_ WOOD FRAME OR BUCK	NO. 8 X 1 1/2" SMS SCREWS	1 1/4"	1/2"
SHEAR SCREWS			
2X_ WOOD FRAME OR BUCK	NO. 10 SMS SCREW	1 1/4"	3/4"
CMU/CONCRETE	(1) 3/16" CONCRETE SCREW	1 1/4"	2"
(1) CONCRETE SCREWS SHALL BE ELCO OR ITW RAMSEY/RED HEAD TAPCONS, HILTI KWIK-CON II OR POWERS RAWL TAPPER (HARDENED STEEL OR S.S.).			

\* ANCHOR NOTE: FRAME MAY BE EITHER DIRECT MOUNTED TO THE OPENING, MOUNTED ONTO A CONTINUOUS WOOD SPACER, OR ANCHORED TO A MIN. 2x4 NO. 3 SOUTHERN PINE WOOD BUCK. WHEN ANCHORED TO A 2x4 BUCK, NO. 10 SHEAR SCREWS OR INSTALLATION CLIPS SHALL BE USED. WHEN DIRECT MOUNTED OR MOUNTED WITH SPACER, 3/16" CONCRETE SCREWS SHALL BE USED. SEE "ANCHOR REQUIREMENTS TABLE" FOR EMBED REQUIREMENTS.

#### JAMB CORNER CONSTRUCTION

STANDARD CORNERS: JAMBS ARE FILLED FULL LENGTH WITH REGRIND PVC, BUTTED TOGETHER & JOINED WITH (3) STAPLES PER CORNER. ALL CORNERS SEALED WITH SILICONE SEALANT.  
MULLION CORNERS: JAMBS ARE FILLED FULL LENGTH WITH REGRIND PVC, BUTTED TOGETHER & JOINED WITH (3) STAPLES & (3) NO. 8 X 2 1/2" SCREWS PER CORNER THROUGH ONE JAMB INTO THE OTHER.

DRAWN BY: K.P.S.		CHECKED BY: W.W.S.	
PLOT: 1=18		DATE: 03/16/04	
NO.	REVISION	DESCRIPTION	BY
LEGEND			
FIXED CASEMENT WINDOWS			
MANUFACTURER			
WINDSOR WINDOWS & DOORS			
900 S. 19TH STREET			
WEST DES MOINES, IA 50265			
800-218-6186			
CONSULTANTS			
W. W. SCHAEFER ENGINEERING & CONSULTING, P.A.			
8895 N. MILITARY TRAIL, SUITE C-204			
PALM BEACH GARDENS, FL 33410			
PHONE: 561-775-4902 FAX: 561-775-4903			
P.E. NO. 44135			
CERTIFICATION			
APR 15 2004			
DRAWING NO. 1297			
SHEET NO. 1 OF 4			



BRICK MOLD IS OPTIONAL & MAY BE REMOVED IF REQUIRED BY OPENING CONDITIONS. (BRICK MOLD SHALL NOT ACT AS A SUBSTITUTE FOR THE FRAME ANCHORS SPECIFIED)

# **FIXED CASEMENT TO FIXED CASEMENT WHEN WINDOW WIDTHS ARE GREATER THAN THE MULLION LENGTH (SEE MULLION LOAD TABLE)**

(DOUBLE WINDOW SHOWN. MORE THAN 2 WINDOWS MAY BE MULLED TOGETHER IN ONE DIRECTION INTO ONE OPENING.)

## **MULTIPLE UNIT NOTES:**

1. THE MAXIMUM ALLOWABLE PRESSURE FOR A COMBINED UNIT IS RESTRICTED BY THE LESSER OF THE INDIVIDUAL WINDOW ALLOWABLE PRESSURE OR THE ALLOWABLE MULLION PRESSURE. SEE MULLION LOAD TABLE ON THIS SHEET FOR ALLOWABLE UNIT PRESSURE.
2. WINDOWS MAY BE STACKED HORIZONTAL OR VERTICAL. (IF VERTICALLY STACKED, MANUFACTURER MUST INSURE THAT THE DEAD WEIGHT OF THE WINDOWS DOES NOT CAUSE ANY WINDOW FAILURES OR DEFORMATIONS)

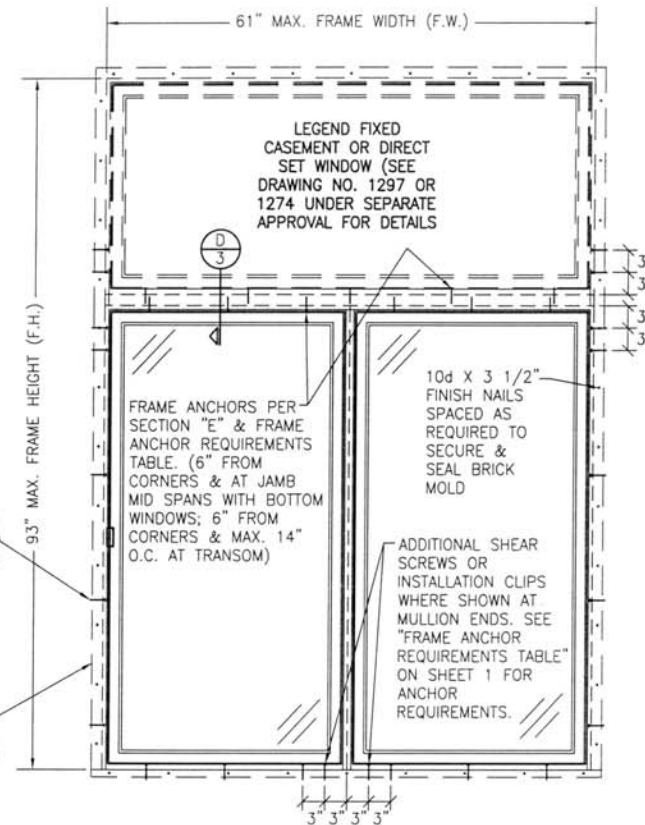
## **ALLOWABLE DESIGN PRESSURE FOR MULLED UNITS**

MAXIMUM MULLION LENGTH (IN.)	MAXIMUM LOAD WIDTH (IN.)	(1) ALLOWABLE PRESSURE (PSF)	MAXIMUM MULLION LENGTH (IN.)	MAXIMUM LOAD WIDTH (IN.)	(1) ALLOWABLE PRESSURE (PSF)	MAXIMUM MULLION LENGTH (IN.)	MAXIMUM LOAD WIDTH (IN.)	(1) ALLOWABLE PRESSURE (PSF)
96	18	24.8	78	42	22.1	66	54	33.5
90	24	23.0		36	24.9		48	35.4
	18	30.1		30	29.1		42	38.3
84	30	23.1		24	35.6		36	42.6
	24	28.4	72	18	46.6	61.5	30	47.0
	18	37.2		54	24.6		61	41.9
				48	26.3		54	42.9
				42	28.6		48	44.9
				36	32.2		42	47.0
				30	37.4	54	54	47.0
				24	45.6			
				18	47.0			

(1) ALLOWABLE PRESSURE IS FOR BOTH POSITIVE & NEGATIVE

TYP. FRAME SCREW OR INSTALLATION CLIP PER SINGLE WINDOW ELEVATION

BRICK MOLD IS OPTIONAL & MAY BE REMOVED IF REQUIRED BY OPENING CONDITIONS. (BRICK MOLD SHALL NOT ACT AS A SUBSTITUTE FOR THE FRAME ANCHORS SPECIFIED)



## **EXTERIOR ELEVATION DOUBLE FIXED CASEMENT WINDOW WITH TRANSOM**

SCALE: 3/4"=1'-0"

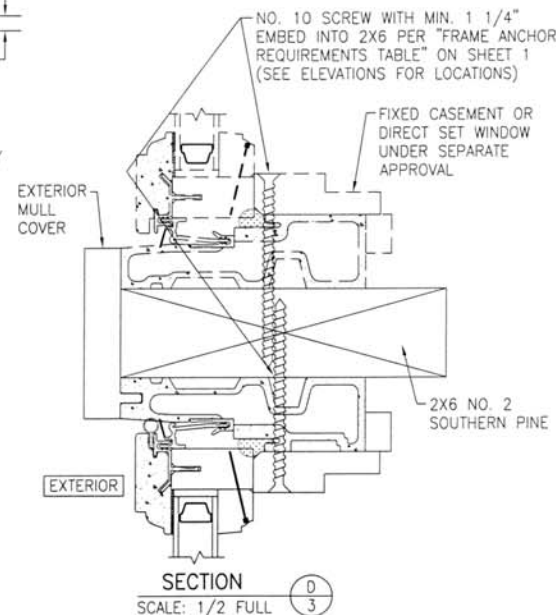
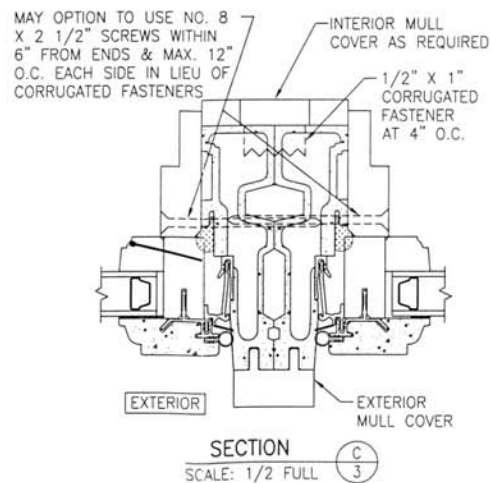
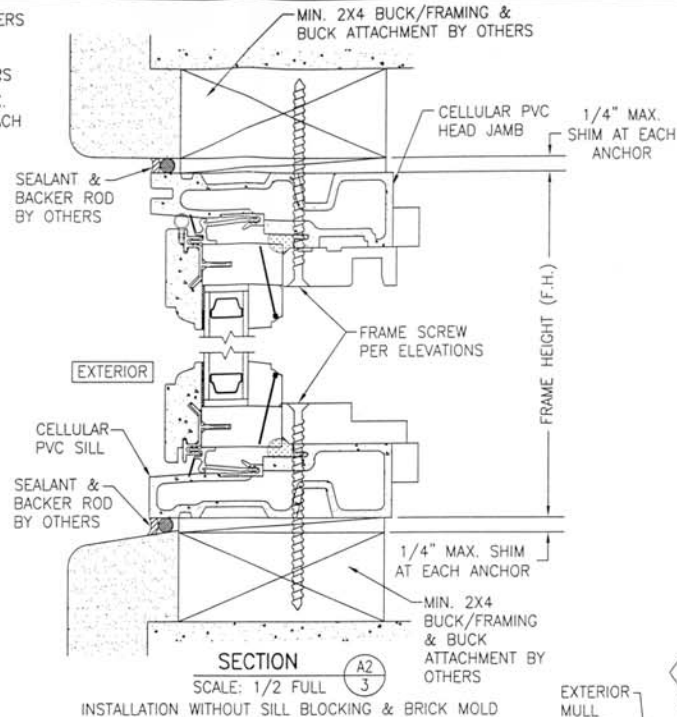
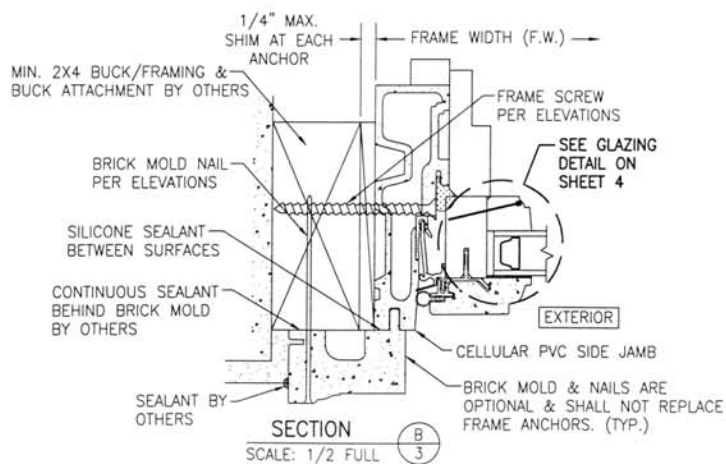
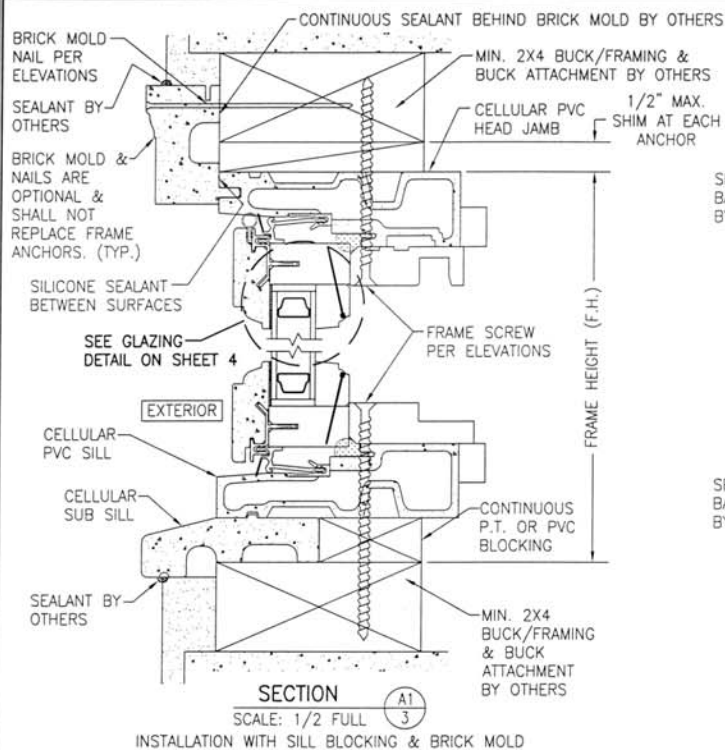
THE ALLOWABLE PRESSURE ON THIS UNIT SHALL BE GOVERNED BY THE LESSER OF +/-47 PSF OR AS CONTROLLED BY THE ALLOWABLE PRESSURE FOR THE VERTICAL MULLION

DRAWN BY: K.P.S.	CHECKED BY: M.S.
PLOT: 1=16	DATE: 03/16/04
DATE	
BY	
REVISION DESCRIPTION	
NO	

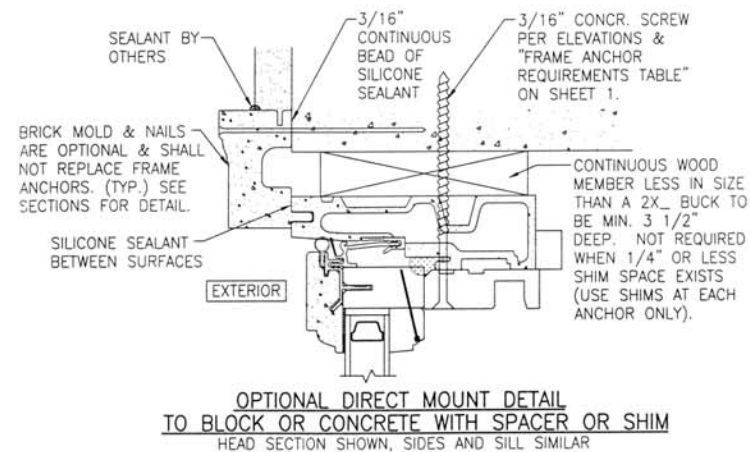
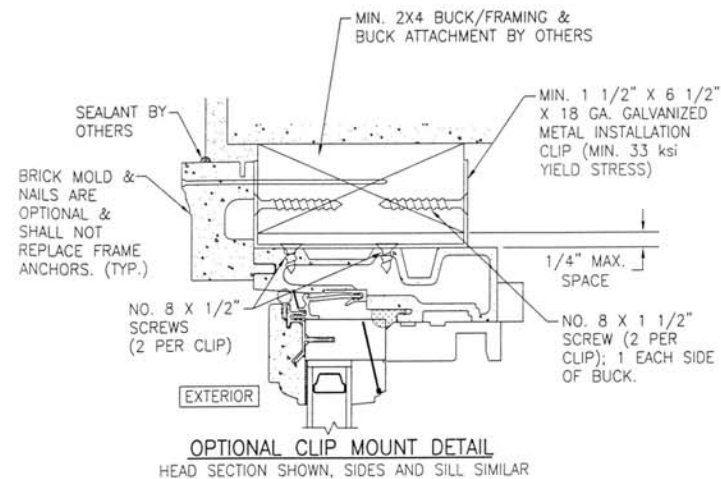
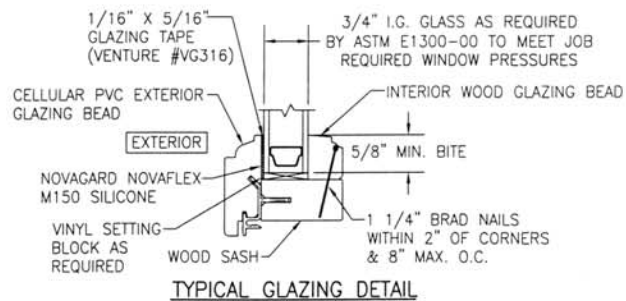
LEGEND FIXED CASEMENT WINDOWS	MANUFACTURER
WINDSOR WINDOWS & DOORS	900 S. 19TH STREET
	WEST DES MOINES, IA 50265
	800-218-6186

CONSULTANTS	MANUFACTURER
W. W. SCHAEFER ENGINEERING & CONSULTING, P.A.	8895 N. MILITARY TRAIL, SUITE C-204
	PALM BEACH GARDENS, FL 33410
	PHONE: 561-775-4902 FAX: 561-775-4903

CERTIFICATION	APR 15 2004
DRAWING NO.	1297
SHEET NO.	2 OF 4



DRAWN BY: K.P.S.	CHECKED BY: W.S.
PLOT: 1=2	DATE: 03/16/04
DATE	
BY	
REVISION DESCRIPTION	
NO	
LEGEND FIXED CASEMENT WINDOWS	
MANUFACTURER	
WINDSOR WINDOWS & DOORS 900 S. 19TH STREET WEST DES MOINES, IA 50265 800-218-6186	
CONSULTANTS	
W. W. SCHAEFER ENGINEERING & CONSULTING, P.A. 8805 N. MILITARY TRAIL, SUITE C-204 PALM BEACH GARDENS, FL 33410 PHONE 561-775-4902 FAX 561-775-4903	
CERTIFICATION	
APR 15 2004	
WARREN W. SCHAEFER, P.E. P.E. NO. 44135	
DRAWING NO. 1297	REV.
SHEET NO. 3	OF 4



DRAWN BY: K.P.S.		CHECKED BY: W.S.	
PLOT: 1=2		DATE: 03/16/04	
NO.	REVISION	DATE	BY
DESCRIPTION			
LEGEND FIXED CASEMENT WINDOWS			
CONSULTANTS		MANUFACTURER	
W. W. SCHAEFER ENGINEERING & CONSULTING, P.A.		WINDSOR WINDOWS & DOORS	
8895 N. MILITARY TRAIL, SUITE C-204 PALM BEACH GARDENS, FL 33410 PHONE: 561-775-4902 FAX: 561-775-4903		900 S. 19TH STREET WEST DES MOINES, IA 50265 800-218-6186	
CERTIFICATION			
APR 15 2004			
WARREN W. SCHAEFER, P.E. P.E. NO. 44135			
DRAWING NO.		REV.	
1297			
SHEET NO.			
4		4	