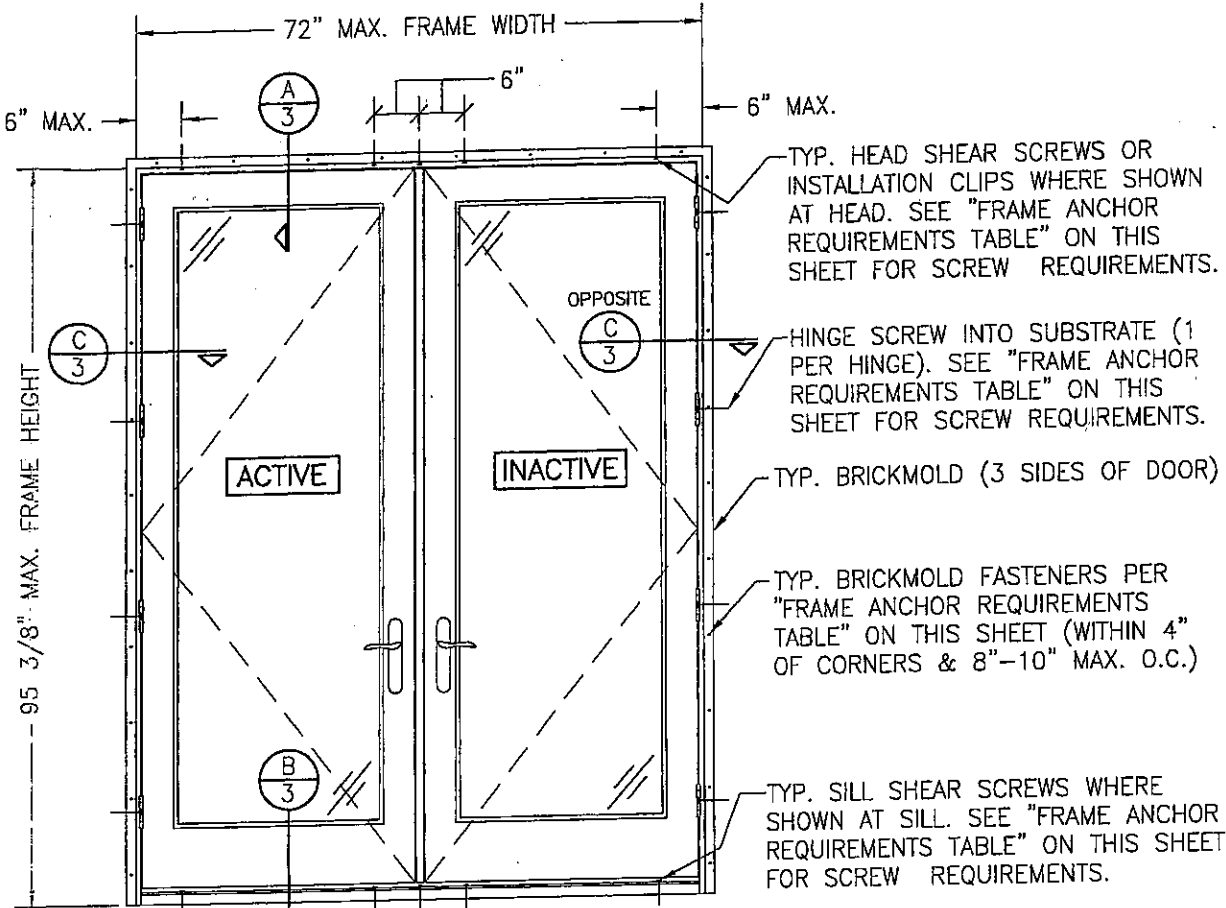


FRAME ANCHOR REQUIREMENTS TABLE			
OPENING TYPE (SUBSTRATE)	FRAME/CLIP/BRICKMOLD/HINGE TO OPENING FASTENER TYPE	MINIMUM EMBED	MINIMUM EDGE DIST.
BRICKMOLD (SIDES & HEAD)			
2X_ WOOD FRAME OR BUCK (MIN. GR. 3 & G=0.55)	NO. 6 X 1 1/2" SMS (FLAT HEAD)	1 3/8"	1/2"
2X_ WOOD FRAME OR BUCK (MIN. GR. 3 & G=0.55)	10D GALV. FINISH NAILS	1 3/8"	1/2"
INSTALLATION CLIP			
2X_ WOOD FRAME OR BUCK (MIN. GR. 3 & G=0.55)	NO. 8 X 1 1/2" SMS	1 3/8"	1/2"
SILL SHEAR SCREWS			
2X_ WOOD FRAME OR BUCK (MIN. GR. 3 & G=0.55)	NO. 10 SMS OR WOOD SCREW	1 1/4"	3/4"
MIN. 2500 PSI CONCRETE	(1) 3/16" CONCRETE SCREW	1 1/4"	2"
HEAD/JAMB/HINGE SHEAR SCREWS			
2X_ WOOD FRAME OR BUCK (MIN. GR. 3 & G=0.55)	NO. 10 SMS OR WOOD SCREW	1 1/4"	3/4"
(1) CONCRETE SCREWS SHALL BE ELCO OR ITW RAMSET/RED HEAD TAPCONS, HILTI KWIK-CON II OR POWERS RAWL TAPPER (HARDENED STEEL OR S.S.).			

GENERAL NOTES

- BUCKING, OPENINGS & BUCKING FASTENERS MUST BE PROPERLY DESIGNED & INSTALLED TO TRANSFER WIND LOADS TO THE STRUCTURE.
- ALL ANCHORS SHALL BE IN ACCORDANCE WITH THESE DRAWINGS & MAY NOT VARY UNLESS SPECIFICALLY MENTIONED ON THE DRAWINGS.
- THESE DOOR SYSTEM INSTALLATIONS HAVE BEEN DESIGNED IN ACCORDANCE WITH & MEET THE REQUIREMENTS OF THE 2004 FLORIDA BUILDING CODE (F.B.C.) FOR NON-HVHZ (NON-HIGH VELOCITY HURRICANE ZONES).
- THESE DOOR SYSTEMS ARE NON-IMPACT RATED & MUST BE SHUTTERED WHERE REQUIRED BY CODE.
- ALL DOOR SIZES SPECIFIED ARE AS CONTROLLED BY THE TESTED UNITS.
- TO THE BEST OF OUR KNOWLEDGE, THE DOORS SHOWN HEREIN ARE CERTIFIED AND/OR QUALITY ASSURED BY A FLORIDA STATE APPROVED CERTIFICATION/QA ENTITY & SHALL BE LABELED IN ACCORDANCE WITH THE STATE CODE & CHAPTER 9B-72 DEPARTMENT OF COMMUNITY AFFAIRS-FLORIDA BUILDING COMMISSION SPECIFICATIONS. BY LABELING THE DOOR, THE MANUFACTURER CONFIRMS THAT THE PRODUCT IS ASSEMBLED IN ACCORDANCE WITH THEIR RESPECTIVE QA & TESTING REPORTS.
- ALL FRAME ANCHORS SECURING DOOR FRAME TO PRESSURE TREATED BUCKS OR WOOD FRAMING SHALL BE CAPABLE OF RESISTING CORROSION CAUSED BY THE PRESSURE TREATING CHEMICALS IN THE WOOD.
- ALL ANCHORS SHALL BE INSTALLED AS SPECIFIED ON THESE DRAWINGS. SPECIFIED EMBEDMENT TO BASE MATERIAL SHALL BE BEYOND WALL FINISH OR STUCCO.
- THIS DRAWING CERTIFIES INSTALLATION ONLY (NOT MANUFACTURING OR WEATHER PROOFING OF THE DOOR). CERTIFICATION OF THESE DOOR INSTALLATIONS SHALL BE CONSIDERED VOID IF ANY OF THE FOLLOWING APPLY:
 - IF THESE DOORS ARE INSTALLED BY ANYONE OTHER THAN A LICENSED CONTRACTOR EXPERIENCED WITH WINDOW INSTALLATIONS.
 - IF THE DOORS ARE INSTALLED WITHOUT A PERMIT FROM THE APPLICABLE LOCAL BUILDING DEPARTMENT.
 - IF THE DOORS INSTALLATION IS NOT INSPECTED EITHER BY THE APPLICABLE LOCAL BUILDING DEPARTMENT INSPECTOR OR ANOTHER PROFESSIONAL LICENSED TO PERFORM INSPECTIONS.
- THESE INSTALLATIONS ARE BASED ON TESTING & RATIONAL ANALYSIS. TEST REPORTS CONSIDERED WITH THIS CERTIFICATION ARE REPORTS NO. WIN043-05-09-85575, & WIN043-12-20-72766.REV BY STORK TWIN CITY TESTING CORP.



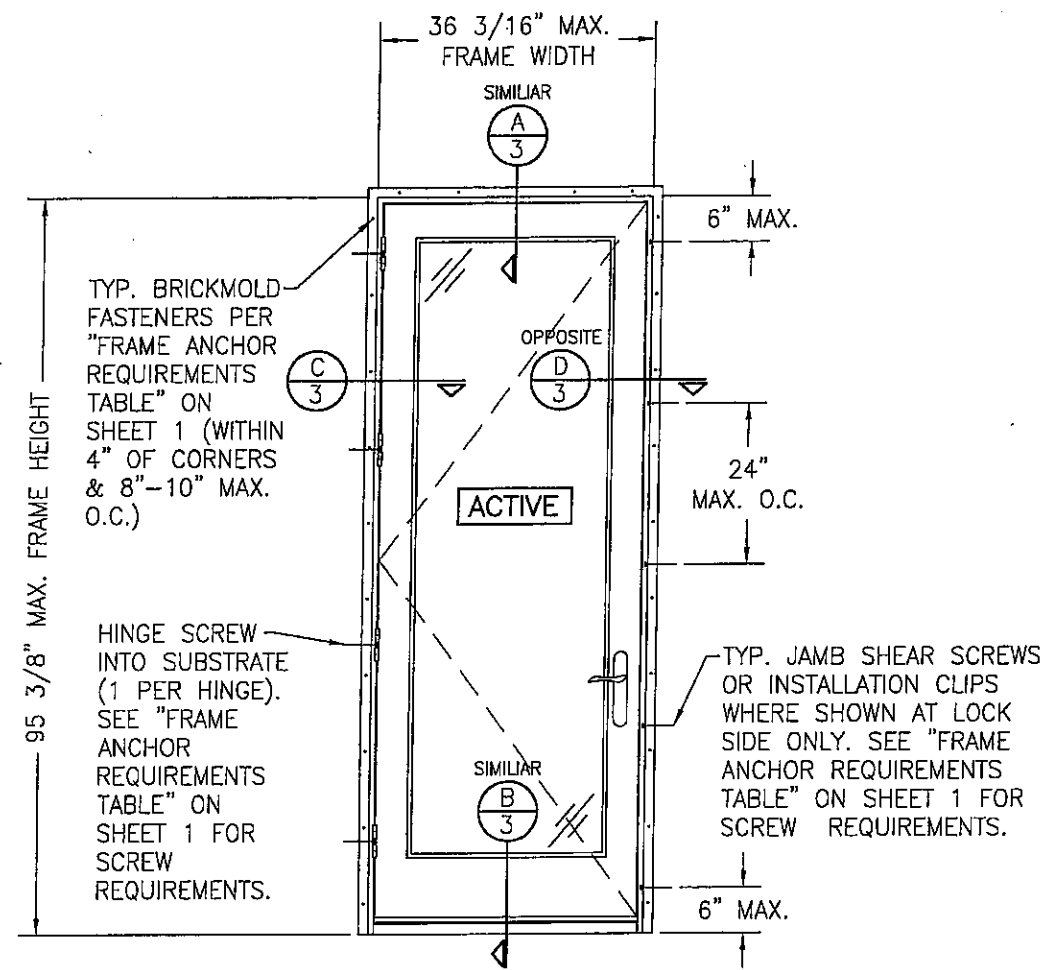
INTERIOR ELEVATION
DOUBLE IN-SWING DOOR

SCALE: 1/2"=1'-0"

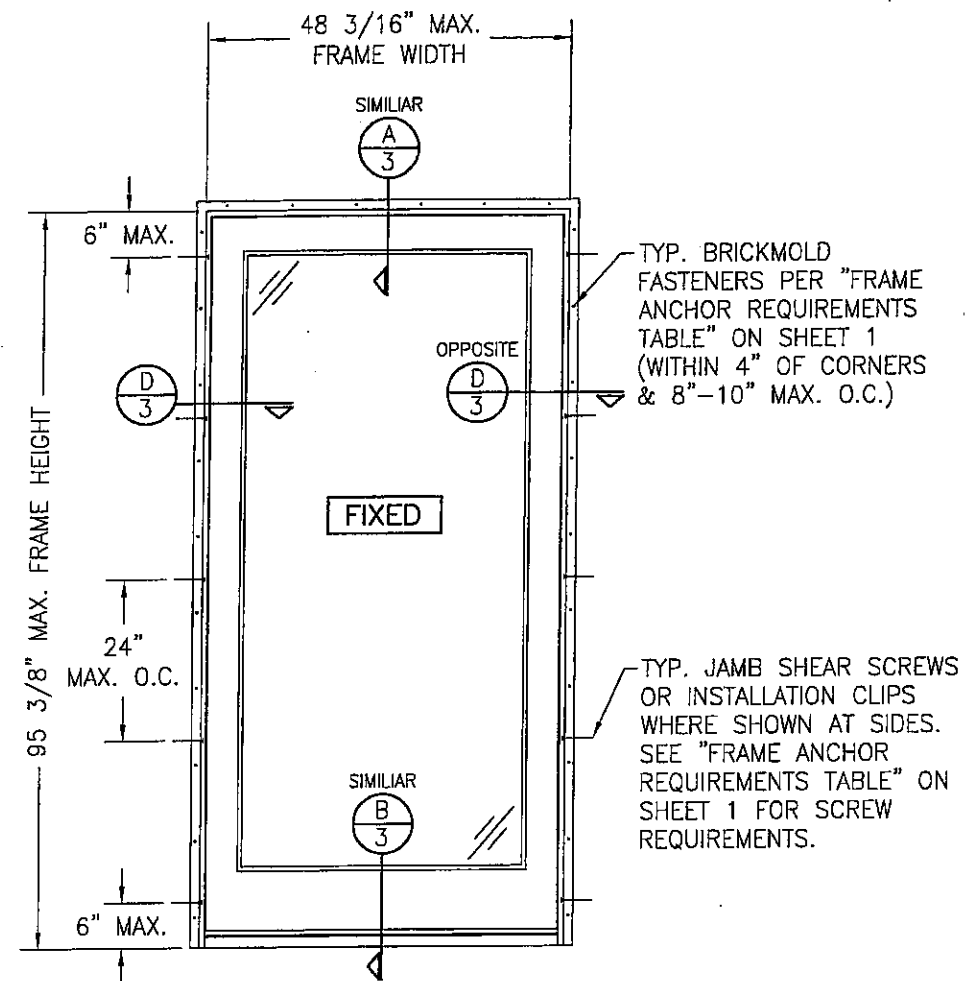
NOTE:
 XX DOOR SHOWN. OX & XO ALSO APPLY. IF
 DOUBLE DOOR CONSISTS OF A FIXED PANEL OR
 PANEL LOCKED AT THE JAMB SIDE, THE SIDE
 ANCHORS SHALL MIMIC THOSE SHOWN WITH THE
 SINGLE DOOR OR FIXED PANEL ELEVATION.

ALLOWABLE DESIGN PRESSURE
+/-30 PSF
NOTE: PRESSURES APPLY TO INSTALLATION ONLY & NOT DOOR ASSEMBLY CONDITIONS

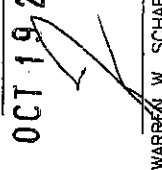
DRAWN BY: W.R.M.		CHECKED BY: W.W.S.	
PLOT: 1=24		DATE: 10/05/07	
DATE	BY	REVISION	DESCRIPTION
DRAWING TITLE: LEGEND HBR NON-IMPACT IN-SWING DOOR MANUFACTURER: WINDSOR WINDOWS & DOORS 900 S. 19TH STREET WEST DES MOINES, IA 50265 800-218-6186			
CONSULTANTS: W. W. SCHAEFER ENGINEERING & CONSULTING, P.A. 8895 N. MILITARY TRAIL, SUITE C-204 PALM BEACH GARDENS, FL 33410 PHONE: 561-775-4902 FAX: 561-775-4903			
CERTIFICATION: OCT 19 2007 WARDEN W. SCHAEFER, P.E. P.E. NO. 44135			
DRAWING NO. 1557		REV.	
SHEET NO. 1 OF 3			

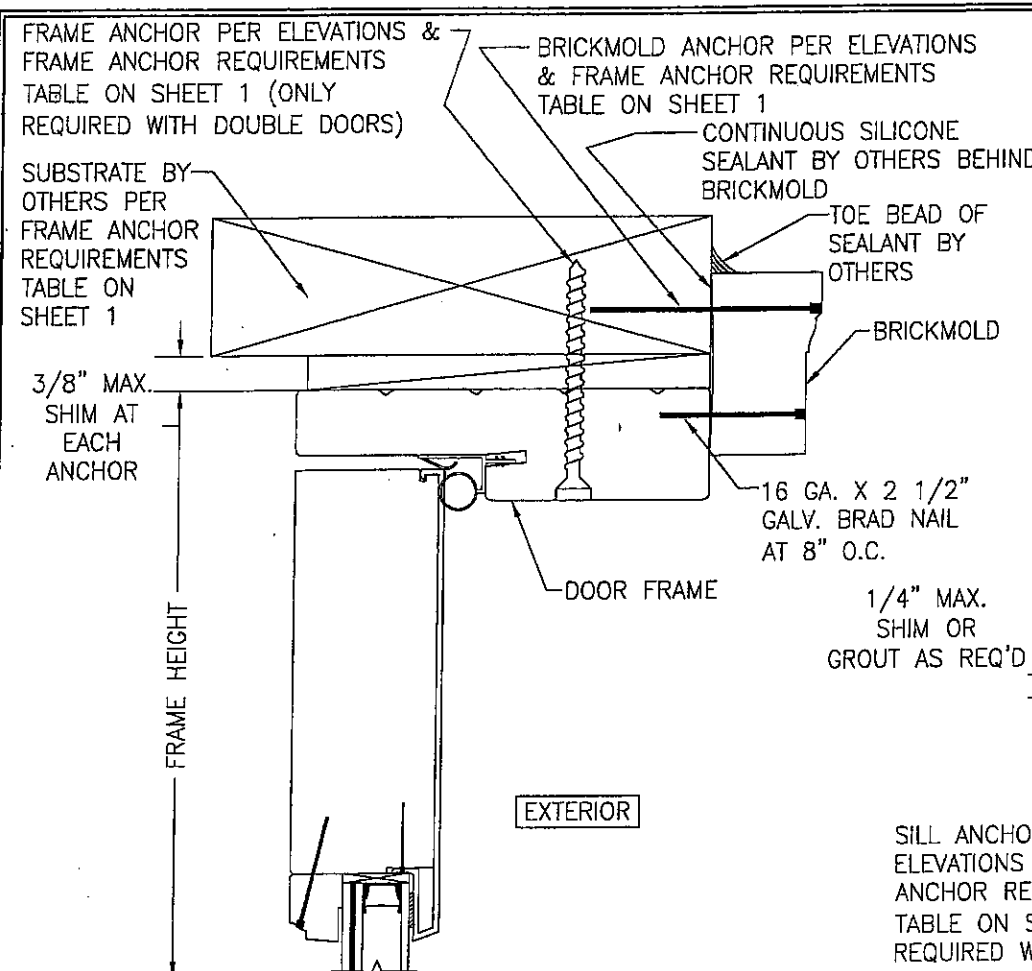


INTERIOR ELEVATION
SINGLE IN-SWING DOOR
SCALE: 1/2"=1'-0"

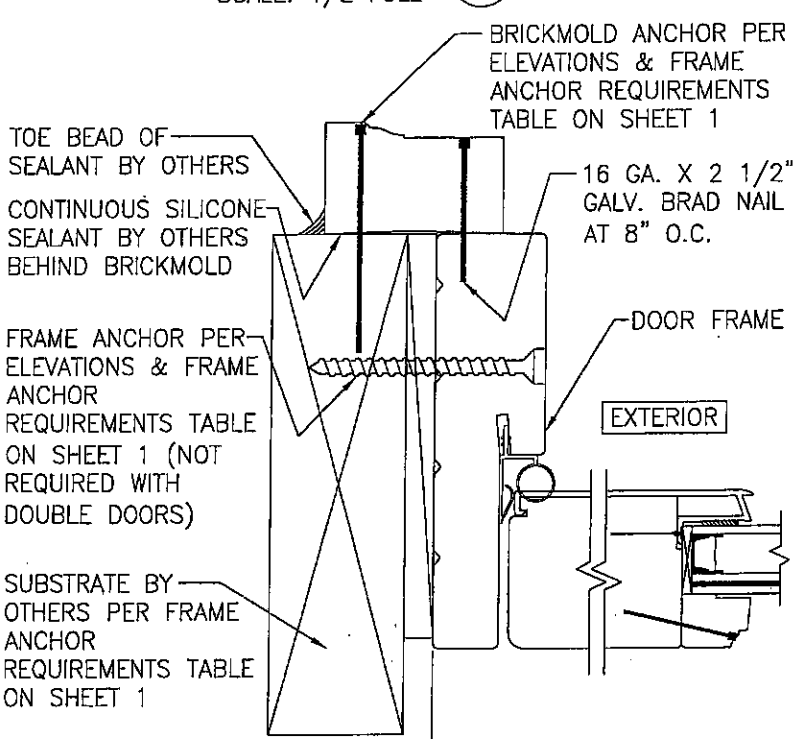


INTERIOR ELEVATION
SINGLE FIXED PANEL DOOR
SCALE: 1/2"=1'-0"

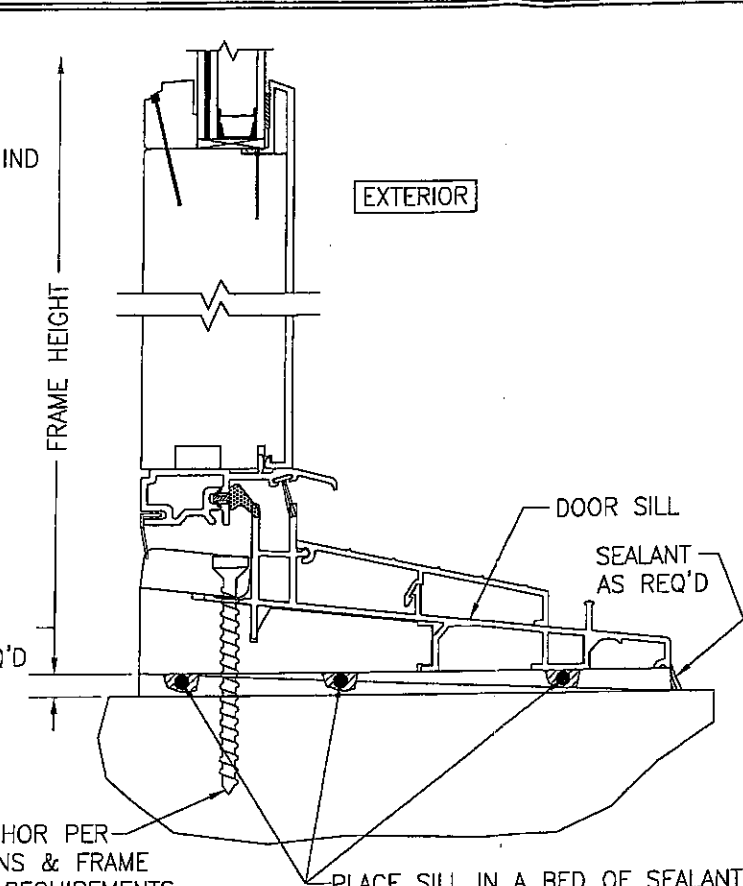
DRAWN BY: W.R.M.		CHECKED BY: W.W.S.	
PLOT: 1=24		DATE: 10/05/07	
NO.	REVISION	DESCRIPTION	DATE
<p>DRAWING TITLE: LEGEND HBR NON-IMPACT IN-SWING DOOR</p> <p>CONSULTANTS: W. W. SCHAEFER ENGINEERING & CONSULTING, P.A. 8895 N. MILITARY TRAIL, SUITE C-204 PALM BEACH GARDENS, FL 33410 PHONE: 561-775-4902 FAX: 561-775-4903 </p> <p>MANUFACTURER: WINDSOR WINDOWS & DOORS 900 S. 19TH STREET WEST DES MOINES, IA 50265 800-218-6186 </p>			
<p>CERTIFICATION OCT 19 2007  WARREN W. SCHAEFER, P.E. P.E. NO. 44135 </p>		<p>DRAWING NO. 1557 SHEET NO. 2 OF 3 </p>	



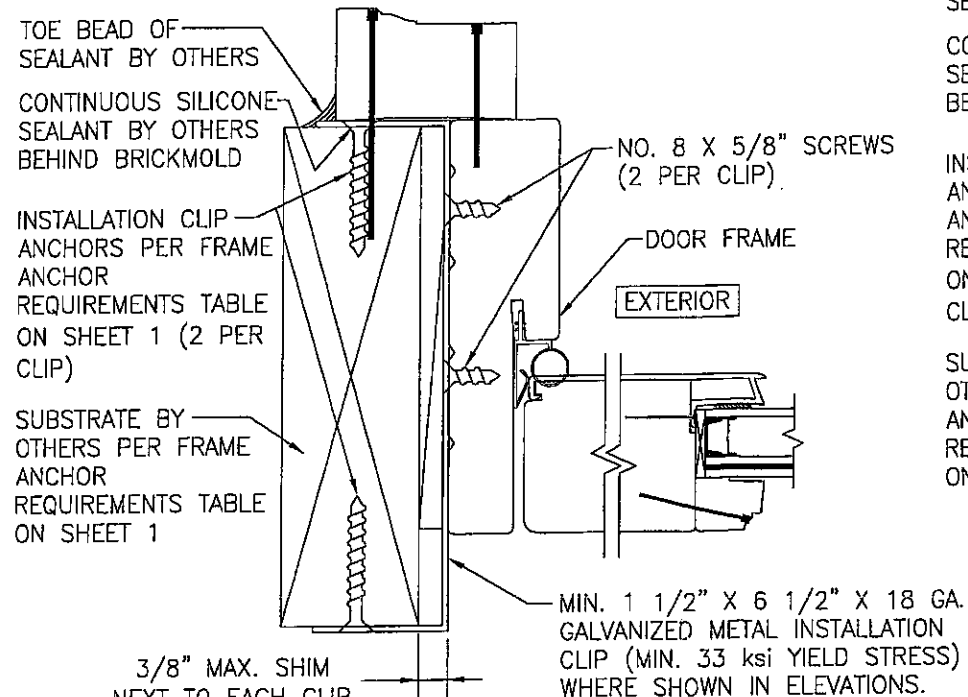
SECTION A
SCALE: 1/2 FULL



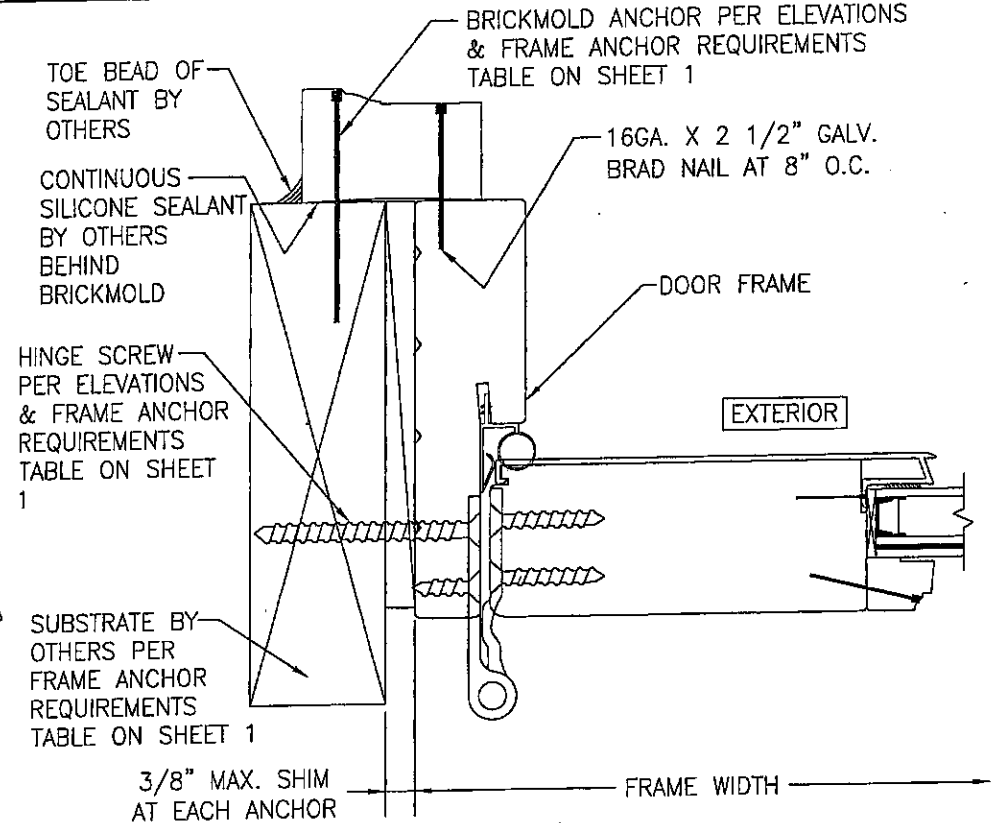
SECTION D
SCALE: 1/2 FULL



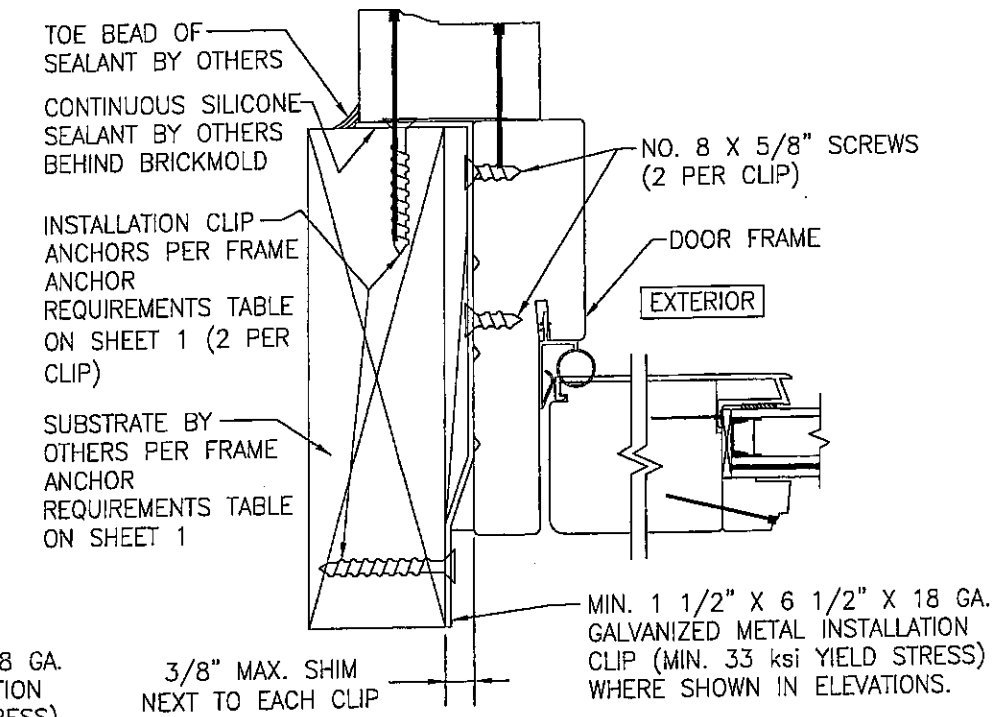
SECTION B
SCALE: 1/2 FULL



OPTIONAL INSTALLATION CLIP MOUNT DETAIL 1
(SIDE SECTION SHOWN; HEAD IS INSTALLED THE SAME)
(FOR DETAIL NOT SHOWN, SEE OTHER SECTIONS)
NOTE: CLIP IS NOT APPLICABLE AT SILL



SECTION C
SCALE: 1/2 FULL



OPTIONAL INSTALLATION CLIP MOUNT DETAIL 2
(SIDE SECTION SHOWN; HEAD IS INSTALLED THE SAME)
(FOR DETAIL NOT SHOWN, SEE OTHER SECTIONS)
NOTE: CLIP IS NOT APPLICABLE AT SILL

DRAWN BY: W.R.M.		CHECKED BY: W.W.S.	
PLOT: 1=2		DATE: 10/05/07	
DATE	BY	REVISION	DESCRIPTION
<p>LEGEND HBR NON-IMPACT IN-SWING DOOR</p> <p>MANUFACTURER WINDSOR WINDOWS & DOORS 102 MAIN STREET WEST DES MOINES, IA 50265 800-218-6186</p> <p>CONSULTANTS W. W. SCHAEFER ENGINEERING & CONSULTING, P.A. 8895 N. MILITARY TRAIL, SUITE C-204 PALM BEACH GARDENS, FL 33410 PHONE: 561-775-4902 FAX: 561-775-4903</p> <p>CERTIFICATION OCT 19 2007 WARREN W. SCHAEFER, P.E. P.E. NO. 44135</p>			
DRAWING NO. 1557		REV.	
SHEET NO. 3		OF 3	



CBUCK Engineering

Specialty Structural Engineering

CBUCK, Inc. Florida Certificate of Authorization # 8064

**Validation
of
Installation Instructions
for
Windsor Windows & Doors
Windsor Series
“Legend HBR In-Swing Door”**

**Florida Product Approval
FL 10077.1**

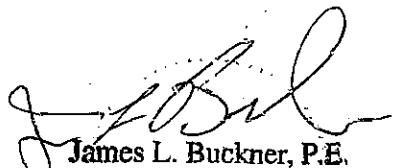
**In compliance with
Florida Building Code 2004**

**Prepared for:
Windsor Windows & Doors
900 S. 19th Street
West Des Moines, IA 50265**

**Prepared by:
James L. Buckner, P.E.
Florida Professional Engineer # 31242
Florida Validation ANE ID: 1916
Report No. 07-303-1-VR
Date: 12 / 20 / 07**

Contents:

Validation Report Pages 1 – 2



James L. Buckner, P.E.
Florida P.E. # 31242
12/20/07

CBUCK, Inc.
1334 S. Killian Drive, Suite 4, West Palm Beach, Florida 33403
Phone: (561)491-9927 Fax: (561)491-9928 Website: www.cbuckinc.net



CBUCK Engineering

Specialty Structural Engineering

CBUCK, Inc. Florida Certificate of Authorization # 8064

Manufacturer: Windsor Windows & Doors

Product Name: "Legend HBR In-Swing Door"

Reviewed Drawings by Warren W. Schaefer, P.E. (Florida P.E. #44135)

Installation Instructions: 1. Drawing No. 1557, Sheets 1-3 , Revised 11/15/07, Signed & Sealed 10/19/07

Installation Instructions Engineer: Warren W. Schaefer, P.E. (Florida P.E. #44135)

Technical Validation Statement: A review of the above referenced installation instructions and supporting data including test reports, anchor calculations, alternate supporting substrates and referenced technical documents demonstrate results equivalent or superior with the tested samples. The additional anchors have been verified to comply with acceptable standards of engineering principles and demonstrate compliance with Florida Building Code, 2004 with Supplements.

Validation Compliance: The installation instructions comply with the technical validation requirements of Rule 9B-72.080(2)(c).

Document Filing: A copy of this validation report, above referenced installation drawings and all supporting data will be filed with CBUCK Engineering as long as this validation is effective.

Reference Documents: 1. AAMA Test Report (FBC Organization #CER ID:1498)
By Stork Twin City Testing Corp.
Report #: WIN043-12-20-72766.rev, Report Date: 7/25/07